

**Shaler Area School District
 SUPPLEMENT C.1A 12-08-2021 2021-2022**

Account Number	Description	Amount
ABC21	ABC GLASS & MIRROR, LLC	
10-2620.610.000.13.00/262061013	MAINT - GEN SUP - MARZOLF	\$513.60
10-2620.610.000.19.00/262061019	MAINT - GEN SUP - ELEM SCH	\$513.60
10-2620.610.000.35.00/262061035	MAINT - GEN SUP - MS	\$513.60
	Vendor Total	\$1,540.80
ABC06	ABCO FIRE PROTECTION INC	
10-2620.431.000.19.00/262043119	Operation/bldg Svc - Preventive Maintenance	\$90.00
ABC57	ABC TRANSIT INC. ABC TRANSIT, INC	
10-2380.584.000.11.00/238058411	ID 2057 Office Of Principal - Inter-District	\$165.58
10-2380.584.000.13.00/238058413	ID 2055 Office Of Principal - Inter-District	\$165.58
10-2380.584.000.14.00/238058414	ID 2056 Office Of Principal - Inter-District	\$82.79
10-2380.584.000.15.00/238058415	ID 2054 Office Of Principal - Inter-District	\$165.58
10-2720.513.000.00.00/2720513	STUDENT TRANSPORT-PUBLIC	\$189,251.23
10-2720.513.000.00.53/272051353	STUDENT TRANSPORT-BEATTIE TECH	\$1,324.64
10-2720.513.000.00.53/272051353	STUDENT TRANSPORT-BEATTIE TECH	\$1,324.64
10-2720.513.000.00.53/272051353	STUDENT TRANSPORT-BEATTIE TECH	\$1,324.64
10-2720.513.000.00.53/272051353	STUDENT TRANSPORT-BEATTIE TECH	\$1,324.64
10-2720.513.000.00.53/272051353	STUDENT TRANSPORT-BEATTIE TECH	\$12,335.33
10-2720.626.000.00.00/2720626	DIESEL FUEL inv 1713910	\$-13,546.40
10-2720.626.000.00.00/2720626	DIESEL FUEL inv 1714249	\$-13,600.08
10-2720.626.000.00.00/2720626	DIESEL FUEL inv 1708118	\$-14,168.64
10-2750.513.000.00.00/2750513	STUDENT TRANSPORT-NON-PUBLIC	\$82,568.92
10-2750.513.000.00.55/275051355	STUDENT TRANSPORT-SPECIAL EDUC	\$9.00
10-2750.513.000.00.55/275051355	STUDENT TRANSPORT-SPECIAL EDUC	\$108,793.84
10-2750.513.000.00.55/275051355	STUDENT TRANSPORT-SPECIAL EDUC	\$-239.60
	Vendor Total	\$357,281.69
ABD21	ABDO PUBLISHING CO	
10-2250.640.000.15.00/225064015	LIBRARY - BOOKS - SCOTT	\$1,509.60
ACA03	ACADEMIC HALLMARKS INC	
10-1243.810.000.30.00/124381030	KNOWLEDGE MASTER OPEN - ONE HIGH SCHOOL TEAM	\$40.00
ACC03	ACCELERATED LEARNING FOUNDATION	
10-1243.610.000.30.00/124361030	GIFTED - GENERAL SUPPLIES - SECONDARY	\$297.50
AGX06	AGX INC	
10-2620.431.000.11.00/262043111	Operation/bldg Svc - Preventive Maintenance	\$158.36
10-2620.431.000.13.00/262043113	Operation/bldg Svc - Preventive Maintenance	\$158.36
10-2620.431.000.14.00/262043114	Operation/bldg Svc - Preventive Maintenance	\$158.36
10-2620.431.000.15.00/262043115	Operation/bldg Svc - Preventive Maintenance	\$158.37
10-2620.431.000.19.00/262043119	Operation/bldg Svc - Preventive Maintenance	\$158.37
10-2620.431.000.31.00/262043131	Operation/bldg Svc - Preventive Maintenance	\$158.18
	Vendor Total	\$950.00
AIU00	ALLEGHENY INTERMED. UNIT ALLEGHENY INTERMEDIATE UNIT	
10-1260.322.000.00.00/1263220	OCTOBER 2021 Physical Support - Prof Education Serv-iu Regul	\$16.69
10-1260.322.000.00.55/126032255	OCTOBER 2021 Physical Support - Prof Education Serv-iu	\$1,518.56
10-1261.322.000.00.00/126132200	OCTOBER 2021 Occupational Support - Prof Education Serv-iu	\$1,692.63
10-1261.322.000.00.55/126132255	OCTOBER 2021 Occupational Support - Prof Education Serv-iu	\$18,606.63
10-1290.322.000.10.00/129032210	TRANSPERFECT OCTOBER 2021 - SPANISH	\$15.30
	Vendor Total	\$21,849.81

Shaler Area School District
SUPPLEMENT C.1A 12-08-2021 2021-2022

	Account Number	Description	Amount
ATD03	ALLIANCE OF THERAPY DOGS ATD		
	10-2380.610.000.35.00/238061035	RENEWAL HEALTH FORM - MEMBERSHIP DUES FOR REGISTERED THERAPY	\$30.00
ALP01	ALPHA CARD		
	10-2620.610.000.19.00/262061019	MAINT - GEN SUP - ELEM SCH	\$502.00
	10-2620.610.000.31.00/262061031	MAINT - GEN SUP - HS	\$502.00
		Vendor Total	\$1,004.00
AMA12	AMAZON.COM		
	10-1110.610.000.31.15/6103115	SUPPLIES - HS SOCIAL STUDIES	\$125.96
	10-1110.650.000.19.15/6181915	CREDIT FOR RETURNED MERCHANDISE - REFERENCE PO 20211267	-\$107.11
	10-1110.650.000.31.00/1161831	CREDIT FOR RETURNED MERCHANDISE - REFERENCE PO 20211267	-\$66.11
	10-1110.758.000.10.00/1175810	CREDIT FOR MERCHANDISE - REFERENCE PO # 20200937	-\$12.11
	10-1211.610.000.30.00/121161030	LIFE SKILLS - GENERAL SUPPLIES - SECONDARY	\$1,188.06
	10-1211.610.000.30.00/121161030	LIFE SKILLS - GENERAL SUPPLIES - SECONDARY	\$21.98
	10-1211.610.000.30.00/121161030	LIFE SKILLS - GENERAL SUPPLIES - SECONDARY	\$11.87
	10-1211.610.000.30.00/121161030	LIFE SKILLS - GENERAL SUPPLIES - SECONDARY	\$3,011.96
	10-2250.610.000.15.00/225061015	SCOTT - GENERAL SUPPLIES	\$48.26
	10-2250.640.000.19.00/225064019	LIBRARY - BOOKS - ELEM SCHOOL	\$74.90
	10-2250.640.000.19.00/225064019	LIBRARY - BOOKS - ELEM SCHOOL	\$22.95
	10-2380.760.000.35.00/238076035	PRINCIPAL -EQUIP-REPLACEMENT - MIDDLE SCH	\$30.99
		Vendor Total	\$4,351.60
AMC22	AMCA SYSTEMS, LLC		
	10-2519.330.000.00.00/2510330	RETIREE BILLING	\$52.00
AME35	AMERICAN RED CROSS		
	10-2380.610.000.19.00/238061019	LIFEGUARD RECERT FOR TROPPMAN, WARONSKY, GRANA, & GLATH	\$160.00
AME71	AMERICAN SPEECH LANGUAGE HEARING ASHA		
	10-1225.810.890.10.00/122581089010	DUES/FEES - SPEECH & LANG SUPPORT -ACCESS	\$253.00
	10-1225.810.890.10.00/122581089010	DUES/FEES - SPEECH & LANG SUPPORT -ACCESS	\$253.00
	10-1225.810.890.10.00/122581089010	DUES/FEES - SPEECH & LANG SUPPORT -ACCESS	\$253.00
	10-1225.810.890.10.00/122581089010	DUES/FEES - SPEECH & LANG SUPPORT -ACCESS	\$253.00
	10-1225.810.890.10.00/122581089010	DUES/FEES - SPEECH & LANG SUPPORT -ACCESS	\$253.00
	10-1225.810.890.30.00/122581089030	DUES/FEES - SPEECH & LANG SUPPORT -ACCESS	\$253.00
		Vendor Total	\$1,518.00
APP14	APPLE INC.		
	10-2271.360.990.35.00/22713699035	Staff Dev/instruct/certified - ESSER III	\$6,500.00
AQU01	AQUA CLEAN COMPANY INC		
	10-2620.610.000.19.00/262061019	MAINT - GEN SUP - ELEM SCH	\$29.40
AQU02	AQUA FILTER FRESH INC		
	10-1110.610.000.19.00/1161019	GENERAL SUPPLIES - ELEM SCHOOL	\$52.90
	10-2360.610.000.00.00/2360610	SUPT - GENERAL SUPPLIES	\$54.45
		Vendor Total	\$107.35
BHP21	B&H PHOTOVIDEO		
	10-1110.610.000.31.10/116103110	EDUC - SUPPLIES - HS TECH ED	\$1,105.14
	10-1110.650.000.19.15/6181915	SOFTWARE SUPPLIES & LICENSING	\$33.48
	10-1110.758.990.31.00/1175899031	Instruction-Reg-Capital New Hard/Soft	\$383.00
	10-1110.758.990.31.00/1175899031	Instruction-Reg-Capital New Hard/Soft	\$1,692.60
		Vendor Total	\$3,214.22

Shaler Area School District
SUPPLEMENT C.1A 12-08-2021 2021-2022

	Account Number	Description	Amount
BH01	BETHANY BAKER		
	10-2360.810.000.00.00/2360810	PenSPRA DUES	\$95.00
BAT04	BRIAN BATKO		
	10-5130.880.000.00.00/5130880	REFUND FOR TAX YEAR 2020	\$537.32
	10-5130.880.000.00.00/5130880	REFUND FOR TAX YEAR 2019	\$537.32
	10-6111.004.000.00.00/61114	REFUND FOR TAX YEAR 2021	\$398.96
		Vendor Total	\$1,473.60
BIG04	BIGGEST FAN, INC.		
	10-3299.810.000.00.00/3299810	Misc Athletics - DUES & FEES	\$1,200.00
BRI01	BRIGHTON MUSIC CENTER		
	10-1110.610.985.35.12/116109853512	Instruction-Reg -Supplies-COVID Related	\$28.89
	10-1110.610.985.35.12/116109853512	Instruction-Reg -Supplies-COVID Related	\$38.67
		Vendor Total	\$67.56
BSN21	BSN SPORTS / US GAMES		
	BSN SPORTS, LLC		
	10-1110.610.000.19.00/1161019	GENERAL SUPPLIES - ELEM SCHOOL	\$1,006.52
	10-3257.610.000.00.00/3257610	Basketball - Boys - GENERAL SUPPLIES	\$766.00
	10-3259.611.000.00.00/3259611	Basketball - Girls - UNIFORMS	\$7,301.00
	10-3265.610.000.00.00/3265610	Football - GENERAL SUPPLIES	\$990.00
	10-3277.611.000.00.00/3277611	Softball - UNIFORMS	\$3,393.09
	10-3280.611.000.00.00/3280611	Swimming - Boys & Girls - UNIFORMS	\$1,135.78
		Vendor Total	\$14,592.39
BUE01	EDWARD BUECHL		
	10-6111.004.000.00.00/61114	REFUND FOR TAX YEAR 2021	\$673.39
BUG01	BUGS-B-GONE		
	10-2620.431.000.01.23/26204310123	Operation/bldg Svc - Preventive Maintenance	\$44.00
	10-2620.431.000.11.23/26204311123	Operation/bldg Svc - Preventive Maintenance	\$44.00
	10-2620.431.000.13.23/26204311323	Operation/bldg Svc - Preventive Maintenance	\$44.00
	10-2620.431.000.15.23/26204311523	Operation/bldg Svc - Preventive Maintenance	\$44.00
	10-2620.431.000.15.23/26204311523	Operation/bldg Svc - Preventive Maintenance	\$44.00
	10-2620.431.000.31.23/26204313123	Operation/bldg Svc - Preventive Maintenance	\$57.00
	10-2620.431.000.35.23/26204313523	Operation/bldg Svc - Preventive Maintenance	\$47.00
		Vendor Total	\$324.00
CAP15	CAPITAL ASSET PROTECTION INC.		
	10-2660.350.000.19.00/266035019	11/14/21 - 11/20/21	\$645.60
	10-2660.350.000.19.00/266035019	11/21/21 - 11/27/21	\$355.08
	10-2660.350.000.31.00/266035031	11/14/21 - 11/20/21	\$1,400.00
	10-2660.350.000.31.00/266035031	11/7/21 - 11/13/21	\$2,045.60
	10-2660.350.000.31.00/266035031	11/21/21 - 11/27/21	\$770.00
	10-2660.350.000.31.00/266035031	10/31/21 - 11/6/21	\$1,636.48
	10-2660.350.000.35.00/266035035	11/14/21 - 11/20/21	\$661.74
	10-2660.350.000.35.00/266035035	11/7/21 - 11/13/21	\$661.74
	10-2660.350.000.35.00/266035035	11/21/21 - 11/27/21	\$363.15
	10-2660.350.000.35.00/266035035	10/31/21 - 11/6/21	\$532.62
	10-3265.350.000.31.00/326535031	10/24/21 - 10/30/21	\$268.32
	10-3273.350.000.31.00/327335031	11/14/21 - 11/20/21	\$89.44
		Vendor Total	\$9,429.77
CDW41	CDW-G		
	CDW GOVERNMENT		
	10-1110.758.989.31.00/1175898931	Instruction-Regular Program - Capital New Hardware Software	\$66,625.00
	10-1110.758.989.31.00/1175898931	Instruction-Regular Program - Capital New Hardware Software	\$58,650.00
	10-1110.758.989.31.00/1175898931	Instruction-Regular Program - Capital New Hardware Software	\$6,500.00

Shaler Area School District
SUPPLEMENT C.1A 12-08-2021 2021-2022

Account Number	Description	Amount
	Vendor Total	\$131,775.00
CHI31	CHILDREN'S INSTITUTE	
	THE CHILDREN'S INSTITUTE	
10-1270.567.000.10.00/127056710	JM & JF 12/1/21 - 12/31/21	\$12,911.50
10-1270.567.000.10.00/127056710	JM & JF 11/1/21 - 11/30/21	\$13,671.00
	Vendor Total	\$26,582.50
CIN12	CINTAS CORP.	
	CINTAS	
10-2620.431.000.01.23/26204310123	Operation/bldg Svc - Preventive Maintenance	\$14.27
10-2620.431.000.11.23/26204311123	Operation/bldg Svc - Preventive Maintenance	\$71.04
10-2620.431.000.13.23/26204311323	Operation/bldg Svc - Preventive Maintenance	\$73.34
10-2620.431.000.14.23/26204311423	Operation/bldg Svc - Preventive Maintenance	\$40.84
10-2620.431.000.15.23/26204311523	Operation/bldg Svc - Preventive Maintenance	\$102.84
10-2620.431.000.19.23/26204311923	Operation/bldg Svc - Preventive Maintenance	\$111.67
10-2620.431.000.31.23/26204313123	Operation/bldg Svc - Preventive Maintenance	\$104.22
10-2620.431.000.35.23/26204313523	Operation/bldg Svc - Preventive Maintenance	\$86.04
	Vendor Total	\$604.26
COM05	COMDOC	
10-2540.610.000.00.00/2540610	GENERAL SUPPLIES	\$783.00
GIE44	DAVID P GIEL GARAGE DOORS, LLC	
10-2620.431.000.01.00/262043101	Operation/bldg Svc - Preventive Maintenance	\$1,475.00
DEM09	MELISSA DEMCHAK	
10-2160.584.000.10.00/216058410	AUGUST THROUGH SEPTEMBER 2021 MILEAGE	\$38.02
DEM01	DEMCO	
10-2250.610.000.13.00/225061013	MARZOLF - GENERAL SUPPLIES	\$258.53
DEM07	CHUCK DEMORE	
10-6111.004.000.00.00/61114	REFUND FOR TAX YEAR 2021	\$678.00
DIS22	DISC MAKERS	
	DIY MEDIA GROUP	
10-1110.610.000.31.10/116103110	EDUC - SUPPLIES - HS TECH ED	\$96.90
DON04	ROBIN DONOVAN	
10-1290.650.000.10.00/129065010	REIMBURSE FOR EASY CBM LICENSE FOR PROGRESS MONITORING	\$49.99
EDG04	EDGENUITY INC	
10-1110.640.000.35.11/6403511	BOOKS - MIDDLE SCHOOL MATH	\$200.00
10-1110.640.000.35.11/6403511	BOOKS - MIDDLE SCHOOL MATH	\$200.00
	Vendor Total	\$400.00
ELT04	ELTECH SECURITY SYSTEMS INC	
10-1110.438.000.35.00/1143835	MAINT&REPAIR INFOR TECH EQ/INFRA - MIDDLE SCHOOL	\$1,891.36
ENE07	ENERGY LIGHT, INC dba LIGHTMART.COM	
10-2620.610.000.31.00/262061031	MAINT - GEN SUP - HS	\$4,322.00
EQU16	EQUIPARTS CORPORATION	
10-2620.610.000.31.00/262061031	MAINT - GEN SUP - HS	\$221.66
FED07	JASON FEDOREK	
10-3235.329.000.31.00/323532931	FALL PLAY - SET DESIGN	\$500.00
FOL01	FOLLETT SCHOOL SOLUTIONS, INC.	
10-2250.640.000.11.00/225064011	LIBRARY - BOOKS - BURCHFIELD	\$84.38
10-2250.640.000.13.00/225064013	LIBRARY - BOOKS - MARZOLF	\$3,166.02
10-2250.640.000.13.00/225064013	LIBRARY - BOOKS - MARZOLF	\$59.74
10-2250.640.000.14.00/225064014	LIBRARY - BOOKS - RESERVE	\$39.45

Account Number	Description	Amount
10-2250.640.000.14.00/225064014	LIBRARY - BOOKS - RESERVE	\$90.99
10-2250.640.000.15.00/225064015	LIBRARY - BOOKS - SCOTT	\$876.83
10-2250.640.000.15.00/225064015	LIBRARY - BOOKS - SCOTT	\$589.10
10-2250.640.000.19.00/225064019	LIBRARY - BOOKS - ELEM SCHOOL	\$1,142.05
10-2250.640.000.19.00/225064019	LIBRARY - BOOKS - ELEM SCHOOL	\$457.56
10-2250.640.000.19.00/225064019	LIBRARY - BOOKS - ELEM SCHOOL	\$447.62
10-2250.640.000.31.00/225064031	LIBRARY - BOOKS - HS	\$473.67
10-2250.640.000.35.00/225064035	LIBRARY - BOOKS - MIDDLE SCHOOL	\$919.44
10-2250.640.000.35.00/225064035	LIBRARY - BOOKS - MIDDLE SCHOOL	\$534.74
	Vendor Total	\$8,881.59
JF11	JEFFREY FRANK (BF)	
	JEFFREY FRANK	
10-1110.610.000.31.02/116103102	REIMBURSEMENT FOR ART SUPPLIES FOR CLASSROOM	\$601.55
GAI52	GAITENS, TUCCERI & NICHOLAS, P.C.	
10-2350.330.000.00.00/2350330	PROF SVCS. LEGAL COSTS	\$262.50
GER12	HARRY GERHARDT	
	H GERHARDT SUPPLY	
10-2620.610.000.11.23/6101123	MAINT - GEN SUP - BURCHFIELD	\$62.28
10-2620.610.000.13.23/6101323	MAINT - GEN SUP - MARZOLF	\$62.28
10-2620.610.000.14.23/6101423	MAINT - GEN SUP - RESERVE	\$62.28
10-2620.610.000.15.23/6101523	MAINT - GEN SUP - SCOTT	\$62.28
10-2620.610.000.19.23/6101923	MAINT - GEN SUP - ELEM SCH	\$62.28
	Vendor Total	\$311.40
GLA21	GLADE RUN LUTHERAN SERVICES	
10-1225.322.000.30.00/122532230	TT - OCTOBER 2021	\$382.50
10-1233.563.000.30.00/123356330	JB & JB OCTOBER 2021	\$7,410.00
10-1233.563.000.30.00/123356330	TT - OCTOBER 2021	\$4,497.11
10-1260.322.000.30.00/126032230	TT - OCTOBER 2021	\$45.00
	Vendor Total	\$12,334.61
GOP01	GOPHER SPORT	
10-1110.610.000.13.08/116101308	MARZOLF-PHYS ED SUPPLIES	\$239.62
10-1110.610.000.31.08/6103108	SUPPLIES - HS HEALTH & PHYS ED	\$496.16
	Vendor Total	\$735.78
GRA66	GRADE POINT RESOURCES LLC	
10-1231.323.990.30.00/123132399030	7TH INSTALLMENT - DECEMBER 2021	\$19,812.00
10-1231.323.990.30.00/123132399030	IN SERVICE TRAINING PREPERATION - OCTOBER 11,	\$700.00
10-1231.323.990.30.00/123132399030	2021 INSTALLMENT - 4 BSC'S - JANUARY 2022	\$19,812.00
10-1231.323.990.30.00/123132399030	6TH INSTALLMENT - NOVEMBER 2021	\$19,812.00
10-1231.323.990.30.00/123132399030	IN SERVICE TRAINING WORK DAY - OCTOBER 11, 2021	\$345.00
	Vendor Total	\$60,481.00
GRA01	GRAINGER	
10-2620.610.000.01.00/262061001	MAINT - GEN SUP - B&G	\$109.42
10-2620.610.000.31.00/262061031	MAINT - GEN SUP - HS	\$175.12
10-2620.610.000.31.00/262061031	MAINT - GEN SUP - HS	\$36.17
10-2620.610.000.35.00/262061035	MAINT - GEN SUP - MS	\$573.19
10-2620.610.000.35.00/262061035	MAINT - GEN SUP - MS	\$316.08
10-2620.610.000.35.00/262061035	MAINT - GEN SUP - MS	\$466.40
10-3259.430.000.00.00/3259430	KEYED PADLOCK - 2	\$41.60
	Vendor Total	\$1,717.98

Shaler Area School District
SUPPLEMENT C.1A 12-08-2021 2021-2022

	Account Number	Description	Amount
GRO08	DALE GROCE & CHRISTINA GROCE		
	10-6111.004.000.00.00/61114	CUR REAL ESTATE TAX-SHALER - OVERPAYMENT	\$3,868.43
GYK01	CHELSEA GYKE, PHD		
	10-2140.330.000.10.00/214033010	NB - IEP MEETING	\$50.00
	10-2140.330.000.10.00/214033010	TE, SB, AW - EVALUATION REPORTS	\$1,500.00
		Vendor Total	\$1,550.00
HAS01	D HASTINGS CO INC		
	10-2620.610.000.01.00/262061001	MAINT - GEN SUP - B&G	\$39.56
	10-2620.610.000.01.00/262061001	MAINT - GEN SUP - B&G	\$21.90
	10-2620.610.000.01.00/262061001	MAINT - GEN SUP - B&G	\$5.59
	10-2620.610.000.01.00/262061001	MAINT - GEN SUP - B&G	\$10.78
	10-2620.610.000.13.00/262061013	MAINT - GEN SUP - MARZOLF	\$2.98
		Vendor Total	\$80.81
HIT41	THE HITE CO		
	MAYER ELECTRIC SUPPLY COMPANY, INC.		
	10-2620.610.000.13.00/262061013	MAINT - GEN SUP - MARZOLF	\$9.74
	10-2620.610.000.19.00/262061019	MAINT - GEN SUP - ELEM SCH	\$60.39
	10-2620.610.000.31.00/262061031	MAINT - GEN SUP - HS	\$65.67
	10-2620.610.000.31.00/262061031	MAINT - GEN SUP - HS	\$934.96
	10-2620.610.000.31.00/262061031	MAINT - GEN SUP - HS	\$66.36
	10-2620.610.000.35.00/262061035	MAINT - GEN SUP - MS	\$109.55
		Vendor Total	\$1,246.67
JH01	JEANNE HOHLWEG		
	10-2360.610.000.00.00/2360610	FLOWERS FOR RETIRING BOARD MEMEBER S DONAHUE	\$40.00
HOM14	HOME DEPOT CREDIT SERVICES		
	HOME DEPOT CREDIT SERVICES		
	10-2620.610.000.01.00/262061001	MAINT - GEN SUP - B&G	\$32.30
	10-2620.610.000.11.00/262061011	MAINT - GEN SUP - BURCHFIELD	\$179.00
	10-2620.610.000.14.00/262061014	MAINT - GEN SUP - RESERVE	\$11.84
	10-2620.610.000.19.00/262061019	MAINT - GEN SUP - ELEM SCH	\$49.62
	10-2620.610.000.19.00/262061019	MAINT - GEN SUP - ELEM SCH	\$290.42
	10-2620.610.000.31.00/262061031	MAINT - GEN SUP - HS	\$-104.95
	10-2620.610.000.31.00/262061031	MAINT - GEN SUP - HS	\$19.97
	10-2620.610.000.31.00/262061031	MAINT - GEN SUP - HS	\$54.97
	10-2620.610.000.31.00/262061031	MAINT - GEN SUP - HS	\$-57.98
	10-2620.610.000.31.00/262061031	MAINT - GEN SUP - HS	\$18.24
	10-2620.610.000.35.00/262061035	MAINT - GEN SUP - MS	\$42.90
	10-2620.610.000.35.00/262061035	MAINT - GEN SUP - MS	\$166.87
		Vendor Total	\$703.20
SB15	SHAUNA HUNT		
	10-2271.581.000.31.00/227158131	PHEAA WORKSHOP IN CRANBERRY 9/30/21 - MILEAGE	\$21.45
HAM23	INSTITUTIONAL DIVERSIFIED		
	10-2620.431.000.31.00/262043131	Operation/bldg Svc - Preventive Maintenance	\$9,195.00
JAP31	J. APPLESEED PUBLISHERS CO-OP		
	10-2250.640.000.15.00/225064015	LIBRARY - BOOKS - SCOTT	\$43.90
	10-2250.648.000.15.00/225064815	LIBRARY - ELEC MEDIA BOOKS&PERIODICALS - SCOTT	\$424.28
	10-2250.648.000.15.00/225064815	LIBRARY - ELEC MEDIA BOOKS&PERIODICALS - SCOTT	\$17.99
		Vendor Total	\$486.17

Shaler Area School District
SUPPLEMENT C.1A 12-08-2021 2021-2022

Account Number	Description	Amount
JOH55	JOHNSTONE SUPPLY	
10-2620.610.000.11.00/262061011	MAINT - GEN SUP - BURCHFIELD	\$9.47
10-2620.610.000.19.00/262061019	MAINT - GEN SUP - ELEM SCH	\$366.29
10-2620.610.000.31.00/262061031	MAINT - GEN SUP - HS	\$158.28
10-2620.610.000.35.00/262061035	MAINT - GEN SUP - MS	\$942.68
	Vendor Total	\$1,476.72
JOR07	JORDAN TAX SERVICE, INC.	
10-2330.335.000.41.00/000000003315	Tax Assess & Collect - Tax Billing Costs - Etna	\$1,519.84
10-2330.335.000.42.00/233033542	Tax Assess & Collect - Tax Billing Costs - Millvale	\$802.55
10-2330.335.000.43.00/233033543	Tax Assess & Collect - Tax Billing Costs - Reserve	\$6,168.00
10-2330.335.000.44.00/233033544	Tax Assess & Collect - Tax Billing Costs - Shaler	\$6,085.10
	Vendor Total	\$14,575.49
JTT02	J&T TIRE CO INC	
	J & T TIRE CO., INC	
10-2650.433.000.00.00/2650433	Vehicle Oper & Maint - Repairs & Maintenance Srvc Vehl	\$364.58
10-2650.433.000.00.00/2650433	Vehicle Oper & Maint - Repairs & Maintenance Srvc Vehl	\$333.20
10-2650.433.000.00.00/2650433	Vehicle Oper & Maint - Repairs & Maintenance Srvc Vehl	\$623.85
10-2650.433.000.00.00/2650433	Vehicle Oper & Maint - Repairs & Maintenance Srvc Vehl	\$793.24
	Vendor Total	\$2,114.87
JK01	JOHN KAIB	
10-2611.584.000.00.00/2611584	NOVEMBER 2021 MILEAGE	\$123.14
10-2611.584.000.00.00/2611584	OCTOBER 2021 MILEAGE	\$151.00
	Vendor Total	\$274.14
KNI05	KNIGHT SOUND & LIGHTING	
10-2620.431.000.35.00/262043135	Operation/bldg Svc - Preventive Maintenance	\$594.00
KUR04	KU RESOURCES, INC.	
10-2620.431.000.19.00/262043119	Operation/bldg Svc - Preventive Maintenance	\$40.25
10-2620.431.000.35.00/262043135	Operation/bldg Svc - Preventive Maintenance	\$40.25
	Vendor Total	\$80.50
LEA35	LEARNING ALLY	
10-2250.640.000.31.00/225064031	LIBRARY - BOOKS - HS	\$2,499.00
LER06	LERNER PUBLICATIONS GROUP	
10-2250.640.000.15.00/225064015	LIBRARY - BOOKS - SCOTT	\$542.95
10-2250.648.000.15.00/225064815	LIBRARY - ELEC MEDIA BOOKS&PERIODICALS - SCOTT	\$1,434.01
10-2250.648.000.19.00/225064819	LIBRARY - ELEC MEDIA BOOKS&PERIODICALS - ELEM SCHOOL	\$1,659.40
	Vendor Total	\$3,636.36
LU01	ALBERT LU / QING SHI	
10-6111.004.000.00.00/61114	REFUND FOR TAX YEAR 2021	\$1,224.55
LUD44	SHERRI LUDWIG	
10-2519.581.000.00.00/2519581	TRAVEL EXP TO FACILITIES, TRANSP, & SAFETY CONFERENCE IN LAN	\$647.64
10-2519.610.000.00.00/2519610	NOVEMBER & DECEMBER 2021 CELL PHONE ALLOWANCE	\$100.00
10-2519.610.000.00.00/2519610	L TAGMYER - SPS - STUDENT NEEDS	\$50.00
	Vendor Total	\$797.64
MAX53	MAXIM HEALTHCARE SERVICES, INC.	
	MAXIM HEALTHCARE SERVICES, INC.	
10-2440.323.890.30.55/24403238903055	10/20/21 - 10/29/21	\$1,300.00
10-2440.323.890.30.55/24403238903055	11/1/21 - 11/5/21	\$1,554.00
10-2440.323.890.30.55/24403238903055	11/15/21 - 11/19/21	\$1,950.00
10-2440.323.890.30.55/24403238903055	10/4/21 - 10/08/21	\$1,471.00

Shaler Area School District
SUPPLEMENT C.1A 12-08-2021 2021-2022

Account Number	Description	Amount
10-2440.323.890.30.55/24403238903055	11/8/21 - 11/11/12/21	\$1,771.00
	Vendor Total	\$8,046.00
MCG52	MCGRAW-HILL EDUCATION, INC.	
10-1110.640.000.14.11/116401411	BOOKS - RESERVE MATH	\$23.35
MED02	MEDCO SUPPLY CO	
10-2440.610.000.13.00/244061013	MARZOLF - GENERAL SUPPLIES	\$102.74
10-2440.610.000.35.00/244061035	GENERAL SUPPLIES	\$11.40
	Vendor Total	\$114.14
MET06	METCO SUPPLY INC	
10-1110.610.000.13.02/116101302	MARZOLF - GENERAL SUPPLIES ART	\$44.80
10-1110.610.000.19.00/1161019	GENERAL SUPPLIES - ELEM SCHOOL	\$31.50
10-2440.610.000.11.00/244061011	BURCHFIELD - GENERAL SUPPLIES	\$3.81
10-2440.610.000.13.00/244061013	MARZOLF - GENERAL SUPPLIES	\$27.09
10-2440.610.000.14.00/244061014	RESERVE - GENERAL SUPPLIES	\$19.64
10-2440.610.000.15.00/244061015	SCOTT - GENERAL SUPPLIES	\$2.76
10-2440.610.000.19.00/244061019	GENERAL SUPPLIES	\$9.40
10-2440.610.000.35.00/244061035	GENERAL SUPPLIES	\$7.05
10-2440.610.990.00.00/2446199	Nursing Services - General Supplies	\$37.64
10-2440.610.990.00.00/2446199	Nursing Services - General Supplies	\$24.60
10-3249.610.000.31.00/324961031	Misc Activities - HS - GENERAL SUPPLIES	\$56.40
	Vendor Total	\$264.69
LM35	LORI MISH	
10-1110.610.000.35.09/6103509	SUPPLIES - MIDDLE SCHOOL FACS	\$40.22
MOB23	MOBILE STORAGE GROUP	
	MOBILE MINI	
10-2620.431.000.01.00/262043101	Operation/bldg Svc - Preventive Maintenance	\$83.36
10-2620.431.000.01.00/262043101	Operation/bldg Svc - Preventive Maintenance	\$75.00
10-2620.431.000.01.00/262043101	Operation/bldg Svc - Preventive Maintenance	\$67.00
10-2620.431.000.01.00/262043101	Operation/bldg Svc - Preventive Maintenance	\$67.00
	Vendor Total	\$292.36
MRJ03	MR JOHN OF PITTSBURGH	
10-2620.431.000.19.00/262043119	Operation/bldg Svc - Preventive Maintenance	\$118.00
10-2620.431.000.31.00/262043131	Operation/bldg Svc - Preventive Maintenance	\$128.00
10-2620.431.000.35.00/262043135	Operation/bldg Svc - Preventive Maintenance	\$233.00
	Vendor Total	\$479.00
MSZ01	SUSAN ELIZABETH MSZYCO	
	SUSAN ELIZABETH MSZYCO	
10-2140.330.000.30.00/214033030	AR & AR - TWO FULL RE-ASSESSMENTS & RE-EVALUATION REPORTS	\$1,000.00
MUS16	MUSIC IS ELEMENTARY	
10-1110.610.000.14.12/116101412	RESERVE - GENERAL SUPPLIES	\$110.00
NAP21	NAPA AUTO/TRUCK PARTS OF ETNA	
10-2620.610.000.01.00/262061001	MAINT - GEN SUP - B&G	\$29.37
10-2620.610.000.01.00/262061001	MAINT - GEN SUP - B&G	\$-18.00
10-2620.610.000.19.00/262061019	MAINT - GEN SUP - ELEM SCH	\$105.97
10-2650.433.000.00.00/2650433	Vehicle Oper & Maint - Repairs & Maintenance Srvc Vehi	\$26.98
	Vendor Total	\$144.32

Shaler Area School District
SUPPLEMENT C.1A 12-08-2021 2021-2022

Account Number	Description	Amount
NAT62	NATIONAL ART & SCHOOL SUPPLIES INC.	
10-1110.610.000.11.00/1161011	GENERAL SUPPLIES - BURCHFIELD	\$245.70
10-1110.610.000.13.00/1161013	GENERAL SUPPLIES - MARZOLF	\$732.55
	Vendor Total	\$978.25
NES08	TODD NESLONEY	
10-8743.000.989.00.00/8743989	11/17 & 18, 2021 - TEACHER/ADMIN COACHING AT SCOTT PRIM & MA	\$8,500.00
NOR35	NORTHERN TOOL & EQUIPMENT CO. CAPITAL ONE TRADE CREDIT	
10-2620.610.986.19.00/262061098619	Operation/bldg Svc - General Supplies	\$508.08
10-2650.610.000.00.00/2650610	VEHICLE - GEN SUP	\$24.80
	Vendor Total	\$532.88
NOV54	NOVA SPORTS	
10-3265.410.000.00.00/3265410	Football - CLEANING SERVICES	\$794.00
10-3265.410.000.00.00/3265410	Football - CLEANING SERVICES	\$805.60
10-3265.410.000.00.00/3265410	Football - CLEANING SERVICES	\$241.60
	Vendor Total	\$1,841.20
OFF03	OFFICE DEPOT BUSINESS SVC. DIV. OFFICE DEPOT	
10-1110.610.000.19.00/1161019	GENERAL SUPPLIES - ELEM SCHOOL	\$243.88
10-1110.610.000.31.00/1161031	GENERAL SUPPLIES - HIGH SCHOOL	\$36.49
10-1110.610.000.31.00/1161031	GENERAL SUPPLIES - HIGH SCHOOL	\$23.63
10-2519.610.000.00.00/2519610	FINANCIAL - GENERAL SUPPLIES	\$199.99
	Vendor Total	\$503.99
PAC02	PA CONNECTING COMMUNITIES	
10-1211.569.000.30.00/121156930	AR - TRANSITION SERVICES - OCTOBER 2021	\$7,293.75
10-1211.569.000.30.00/121156930	JY - TRANSITION SERVICES - OCTOBER 2021	\$2,043.75
	Vendor Total	\$9,337.50
PEN21	PA MUNICIPAL SVC CO	
10-2334.330.000.00.00/2334330	MILLVALE - 208 LIENS @ \$60	\$12,480.00
10-2334.330.000.00.00/2334330	SHALER TWP - 381 LIENS @ \$60	\$22,860.00
10-2334.332.000.00.00/2334332	OCTOBER 2021	\$125.00
10-2334.332.000.00.00/2334332	OCTOBER 2021	\$35.85
	Vendor Total	\$35,500.85
PAR08	JUSTIN RYAN PARRISH / ABBEY	
10-6111.004.000.00.00/61114	REFUND FOR TAX YEAR 2021	\$262.89
PEP12	J W PEPPER & SON, INC.	
10-1110.610.000.31.12/116103112	SUPPLIES - HS MUSIC	\$87.00
10-1110.610.000.35.12/6103512	SUPPLIES - MIDDLE MUSIC	\$106.94
	Vendor Total	\$193.94
PES06	PESTCO INC	
10-2620.431.000.11.23/26204311123	Operation/bldg Svc - Preventive Maintenance	\$65.00
10-2620.431.000.11.23/26204311123	Operation/bldg Svc - Preventive Maintenance	\$71.50
10-2620.431.000.13.23/26204311323	Operation/bldg Svc - Preventive Maintenance	\$44.00
10-2620.431.000.13.23/26204311323	Operation/bldg Svc - Preventive Maintenance	\$40.00
10-2620.431.000.14.23/26204311423	Operation/bldg Svc - Preventive Maintenance	\$30.00
10-2620.431.000.14.23/26204311423	Operation/bldg Svc - Preventive Maintenance	\$30.00
10-2620.431.000.14.23/26204311423	Operation/bldg Svc - Preventive Maintenance	\$33.00
10-2620.431.000.15.23/26204311523	Operation/bldg Svc - Preventive Maintenance	\$85.00
10-2620.431.000.15.23/26204311523	Operation/bldg Svc - Preventive Maintenance	\$85.00
10-2620.431.000.15.23/26204311523	Operation/bldg Svc - Preventive Maintenance	\$93.50
10-2620.431.000.19.23/26204311923	Operation/bldg Svc - Preventive Maintenance	\$120.00

**Shaler Area School District
SUPPLEMENT C.1A 12-08-2021 2021-2022**

	Account Number	Description	Amount
	10-2620.431.000.19.23/26204311923	Operation/bldg Svc - Preventive Maintenance	\$132.00
	10-2620.431.000.31.23/26204313123	Operation/bldg Svc - Preventive Maintenance	\$255.55
	10-2620.431.000.35.23/26204313523	Operation/bldg Svc - Preventive Maintenance	\$220.00
	10-2620.431.000.35.23/26204313523	Operation/bldg Svc - Preventive Maintenance	\$200.00
		Vendor Total	\$1,504.55
PET52	PETROLEUM TRADERS CORP		
	10-2720.626.000.00.00/2720626	DIESEL FUEL	\$13,600.08
	10-2720.626.000.00.00/2720626	DIESEL FUEL	\$13,546.40
		Vendor Total	\$27,146.48
PIT12	PITTSBURGH CARTRIDGE CO		
	10-1110.650.000.31.00/1161831	INSTRUCTIONAL - SOFTWARE SUP & LICENSING - HIGH SCHOOL	\$177.00
PIT41	PITTSBURGH POST-GAZETTE		
	10-2519.549.000.00.00/2510540	ADVERTISING - BIDS & PROPOSALS	\$664.95
	10-2839.549.000.00.00/2830540	ADVERTISING FOR FT SCHOOL NURSE & FT PARAPROFESSIONALS	\$500.00
	10-2839.549.000.00.00/2830540	ADVERTISING- FT SCHOOL NURSE & FT PARAPROFESSIONALS	\$317.00
		Vendor Total	\$1,481.95
PIT53	PITTSBURGH STAGE INC		
	10-2620.610.000.31.00/262061031	MAINT - GEN SUP - HS	\$770.00
PIT56	PITTSBURGH TROPHY CO.		
	10-2360.610.000.00.00/2360610	SUPT - GENERAL SUPPLIES	\$92.40
	10-3299.581.000.00.00/3299581	Misc Athletics - CHAMPIONSHIP PLAYOFF EXP - GIRLS VOLLEYBALL	\$109.30
		Vendor Total	\$201.70
PIT06	PITT SPECIALTY SUPPLY, INC		
	10-2620.610.000.31.23/6103123	MAINT - GEN SUP - HS	\$1,072.46
PME02	PMEA		
	10-3215.810.000.31.00/321581031	PMEA DISTRICT 1 BAND WEST FESTIVAL - 2 STUDENTS	\$120.00
PUB03	PUBLIC SCHOOL EMPLOYEES RETIREMENT SYS		
	10-1110.230.000.00.00/11230	B FOX - FUPT	\$340.55
	10-1110.230.000.00.00/11230	BARTOSH, MUTSCHLER, MARNICH, NATALIA, KARTAN, MORSS - WNC 20	\$27,012.30
	10-1241.230.000.10.00/124123010	CB - FUPT - 2004 THROUGH 2009	\$19.84
	10-2620.230.000.00.00/2620230	MK - FUPT - 2008/2009	\$196.73
		Vendor Total	\$27,569.42
PYR21	PYRAMID SCHOOL PRODUCTS		
	10-1110.610.000.13.00/1161013	GENERAL SUPPLIES - MARZOLF	\$133.20
	10-1110.610.000.19.00/1161019	GENERAL SUPPLIES - ELEM SCHOOL	\$16.74
	10-2440.610.000.11.00/244061011	BURCHFIELD - GENERAL SUPPLIES	\$27.90
	10-2440.610.000.13.00/244061013	MARZOLF - GENERAL SUPPLIES	\$16.03
	10-2440.610.000.14.00/244061014	RESERVE - GENERAL SUPPLIES	\$4.88
	10-2440.610.000.19.00/244061019	GENERAL SUPPLIES	\$34.75
		Vendor Total	\$233.50
QUE01	QUEST DIAGNOSTICS		
	10-2839.330.000.00.00/2830330	PURCH OTHER PROF SVC	\$35.50

Shaler Area School District
SUPPLEMENT C.1A 12-08-2021 2021-2022

Account Number	Description	Amount
CR31	CLINT RAUSCHER	
10-3251.584.000.00.00/3251584	Athletic Director - Travel Inter-District	\$129.15
10-3251.584.000.00.00/3251584	TRAVEL - MILEAGE, ETC.	\$405.70
	Vendor Total	\$534.85
RAY01	RAYBURG APPLIANCE SERVICE, INC.	
10-2620.432.000.19.00/262043219	Operation/bldg Svc - Repairs & Maintenance Svc	\$94.00
10-2620.432.000.35.00/262043235	REPAIRS&MAINTENANCESVC	\$164.50
	Vendor Total	\$258.50
RES06	RESERVE TOWNSHIP	
10-2790.330.000.00.00/2790330	CROSSING GUARDS - JULY, AUGUST & SEPTEMBER 2021	\$817.06
RIC53	RICCI'S REPAIR, LLC	
10-2650.433.000.00.00/2650433	Vehicle Oper & Maint - Repairs & Maintenance Srvcs Vehi	\$661.44
ROB23	LINDA ROBERTSON	
10-2380.610.000.15.00/238061015	PROFESSIONAL DEVELOPMENT	\$103.79
ROK04	JOHN P & JENNIFER L ROKOSZ	
10-5130.880.000.00.00/5130880	REFUND FOR TAX YEAR 2020	\$320.55
10-6111.004.000.00.00/61114	REFUND FOR TAX YEAR 2021	\$205.24
	Vendor Total	\$525.79
ROS01	ROSEN PUBLISHING CO	
10-2250.640.000.15.00/225064015	LIBRARY - BOOKS - SCOTT	\$96.75
10-2250.640.000.15.00/225064015	LIBRARY - BOOKS - SCOTT	\$184.05
	Vendor Total	\$280.80
ROS06	ROSSI FLOOR TECHNOLOGIES	
10-2620.431.000.31.00/262043131	Operation/bldg Svc - Preventive Maintenance	\$85.00
10-2620.431.000.31.23/26204313123	Operation/bldg Svc - Preventive Maintenance	\$323.30
	Vendor Total	\$408.30
SAN09	DAVID V P & MEGAN SANCHEZ	
10-5130.880.000.00.00/5130880	REFUND FOR TAX YEAR 2019	\$398.96
10-5130.880.000.00.00/5130880	REFUND FOR TAX YEAR 2020	\$348.27
10-6111.004.000.00.00/61114	REFUND FOR TAX YEAR 2021	\$283.65
	Vendor Total	\$1,030.88
SAV02	SAVVAS LEARNING COMPANY LLC	
10-1110.640.000.19.05/116401905	BOOKS - ELEM SCHOOL LANG ARTS	\$5,560.44
SCH44	SCHAEDLER YESCO	
10-2620.610.000.15.00/262061015	MAINT - GEN SUP - SCOTT	\$660.00
MIC06	HENRY SCHEIN INC.	
10-2440.610.000.11.00/244061011	BURCHFIELD - GENERAL SUPPLIES	\$28.13
10-2440.610.000.13.00/244061013	MARZOLF - GENERAL SUPPLIES	\$37.42
10-2440.610.000.14.00/244061014	RESERVE - GENERAL SUPPLIES	\$52.26
10-2440.610.000.15.00/244061015	SCOTT - GENERAL SUPPLIES	\$7.76
10-2440.610.990.00.00/2446199	Nursing Services - General Supplies	\$10.38
	Vendor Total	\$135.95
SCH24	SCHINDLER ELEVATOR CORP	
10-2620.431.000.11.00/262043111	Operation/bldg Svc - Preventive Maintenance	\$517.98
10-2620.431.000.13.00/262043113	Operation/bldg Svc - Preventive Maintenance	\$517.98
10-2620.431.000.15.00/262043115	Operation/bldg Svc - Preventive Maintenance	\$517.98
10-2620.431.000.31.00/262043131	Operation/bldg Svc - Preventive Maintenance	\$517.98
10-2620.431.000.35.00/262043135	Operation/bldg Svc - Preventive Maintenance	\$1,035.93
	Vendor Total	\$3,107.85

Shaler Area School District
SUPPLEMENT C.1A 12-08-2021 2021-2022

Account Number	Description	Amount
SCH36	SCHOOL HEALTH CORPORATION	
10-2440.610.000.11.00/244061011	BURCHFIELD - GENERAL SUPPLIES	\$1.90
10-2440.610.000.13.00/244061013	MARZOLF - GENERAL SUPPLIES	\$37.21
10-2440.610.000.13.00/244061013	MARZOLF - GENERAL SUPPLIES	\$0.54
10-2440.610.000.14.00/244061014	RESERVE - GENERAL SUPPLIES	\$61.05
10-2440.610.000.15.00/244061015	SCOTT - GENERAL SUPPLIES	\$15.63
10-2440.610.000.19.00/244061019	GENERAL SUPPLIES	\$1.08
10-2440.610.000.19.00/244061019	GENERAL SUPPLIES	\$140.32
10-2440.610.990.00.00/2446199	Nursing Services - General Supplies	\$31.60
	Vendor Total	\$289.33
SHA07	SHALER AREA CAFETERIA ACCT	
10-1110.610.000.31.00/1161031	SALAD LUNCHES FOR MEETING	\$21.75
10-2440.610.000.30.00/244061030	ZESTA SALTINE CRACKERS	\$14.10
10-3300.635.000.00.00/33635	VETERAN'S BREAKFAST PARADE	\$196.35
	Vendor Total	\$232.20
82APC	SHALER AREA HIGH SCHOOL	
10-3265.599.000.00.00/3265599	FOOTBALL OFFICIALS - ARBITER PAYMENTS	\$771.00
10-3275.599.000.00.00/3275599	GIRLS SOCCER OFFICIALS - ARBITER PAYMENTS	\$290.00
10-3293.599.000.00.00/3293599	GIRLS VOLLEYBALL OFFICIALS - ARBITER PAYMENTS	\$170.00
10-3299.599.000.00.00/3299599	ARBITER PROCESSING FEES	\$25.80
	Vendor Total	\$1,256.80
SHA11	TOWNSHIP OF SHALER	
10-2620.622.000.19.00/262042219	Electricity - ELEM SCHOOL	\$80.55
10-2790.330.000.00.00/2790330	TRAFFIC CONTROL - MIDDLE/MARZOLF - 8/25, 26, 27, 30, 31, 9/1	\$946.89
	Vendor Total	\$1,027.44
SIT03	SitSpots	
10-1110.610.771.11.00/1161077111	Instruction-Regular Program - General Supplies	\$71.90
10-1110.610.771.13.00/1161077113	Instruction-Regular Program - General Supplies	\$71.90
10-1110.610.771.14.00/1161077114	Instruction-Regular Program - General Supplies	\$71.90
10-1110.610.771.15.00/1161077115	Instruction-Regular Program - General Supplies	\$71.91
	Vendor Total	\$287.61
SOU03	SOUTHEASTERN PERFORMANCE APPAREL	
10-3221.611.000.00.00/3221611	Chorus - UNIFORMS	\$970.49
SUN56	SUNBURY CONTROLS, INC.	
10-2620.610.000.11.00/262061011	MAINT - GEN SUP - BURCHFIELD	\$120.36
10-2620.610.000.35.00/262061035	MAINT - GEN SUP - MS	\$248.00
	Vendor Total	\$368.36
TMO01	T-MOBILE USA INC.	
10-1110.650.990.10.00/111065099010	Instruction-Regular Program - Supplies & Fees Technology Rel	\$400.00
10-1110.650.990.30.00/111065099030	Instruction-Regular Program - Supplies & Fees Technology Rel	\$400.00
	Vendor Total	\$800.00
TEC54	TECH SUPPORT SCREEN PRINTING SUPPLIES	
	TECH SUPPORT SPS	
10-1110.610.000.31.02/116103102	SUPPLIES - HS ART	\$815.45
TER33	TERRAPIN - TOOLS FOR THINKING	
10-1110.610.771.11.00/1161077111	Instruction-Regular Program - General Supplies	\$245.64
10-1110.610.771.13.00/1161077113	Instruction-Regular Program - General Supplies	\$245.64
10-1110.610.771.14.00/1161077114	Instruction-Regular Program - General Supplies	\$245.64
10-1110.610.771.15.00/1161077115	Instruction-Regular Program - General Supplies	\$245.62
	Vendor Total	\$982.54

**Shaler Area School District
 SUPPLEMENT C.1A 12-08-2021 2021-2022**

Account Number	Description	Amount
HAR02 THE HARTFORD		
10-0475.038.000.00.00/047538	EMPLOYER LIFE INS - 213 - DECEMBER 2021	\$7,798.17
THE03 THERMOFLO EQUIPMENT COMPANY INC		
10-2620.610.000.14.00/262061014	MAINT - GEN SUP - RESERVE	\$18.07
REK04 THOMAS JON REKOWSKI		
10-3265.599.000.00.00/3265599	Football - MISC PURCHASED SERVICES	\$360.00
THO27 MELISSA LEE THORNTON		
10-6111.004.000.00.00/61114	REFUND FOR TAX YEAR 2021	\$452.01
JF01 JOANNE TOWNSEND		
10-2380.584.000.31.00/238058431	JULY THROUGH OCTOBER 2021 MILEAGE	\$41.10
TUC08 TUCKER ARENSBERG, PC		
10-2350.330.000.00.00/2350330	PERSONNEL	\$577.50
10-2350.330.000.00.00/2350330	GENERAL	\$2,646.50
10-2350.330.000.00.00/2350330	RETAINER	\$850.00
10-2350.330.000.00.55/235033055	SPECIAL ED MATTERS	\$33.00
10-2350.333.000.00.00/2350333	DELINQUENT TAX COLLECTIONS	\$7,939.50
10-2350.333.000.00.00/2350333	Legal Services - Tax Appeal-legal	\$2,230.25
	Vendor Total	\$14,276.75
VER04 TYLER TECHNOLOGIES, INC.		
10-2719.650.000.00.00/2710618	SOFTWARE SUPPLIES & LICENSING	\$863.12
URS12 URSO TOURS URSO BUS, LLC		
10-3299.581.000.00.00/3299581	Misc Athletics - CHAMPIONSHIP PLAYOFF EXP	\$3,800.00
VAL01 VALUATION ENGINEERS VALUATION ENGINEERS, INC.		
10-2519.330.000.00.00/2510330	ANNUAL REVALUATION SERVICE RENDERED 2021	\$1,894.00
VBF14 VB FABRICATORS INC. VB FABRICATORS INC.		
10-2650.433.000.00.00/2650433	Vehicle Oper & Maint - Repairs & Maintenance Srvcs Vehi	\$312.00
VINO5 VINCENT LIGHTING SYSTEMS		
10-2620.431.000.31.00/262043131	Operation/bldg Svc - Preventive Maintenance	\$430.00
VIT04 VITA PERSONA LLC		
10-2440.610.000.11.00/244061011	BURCHFIELD - GENERAL SUPPLIES	\$81.60
10-2440.610.000.13.00/244061013	MARZOLF - GENERAL SUPPLIES	\$340.00
10-2440.610.000.14.00/244061014	RESERVE - GENERAL SUPPLIES	\$163.20
10-2440.610.000.15.00/244061015	SCOTT - GENERAL SUPPLIES	\$108.80
10-2440.610.000.19.00/244061019	GENERAL SUPPLIES	\$204.00
10-2440.610.000.35.00/244061035	GENERAL SUPPLIES	\$163.20
10-2440.610.990.00.00/2446199	Nursing Services - General Supplies	\$190.40
	Vendor Total	\$1,251.20
VOL01 VOLKWEIN'S		
10-1110.610.000.19.12/6101912	MIDDLE/ELEM - GENERAL SUPPLIES	\$240.00
10-1110.610.000.19.12/6101912	MIDDLE/ELEM - GENERAL SUPPLIES	\$49.99
10-1110.610.000.31.12/116103112	SUPPLIES - HS MUSIC	\$167.40
10-1110.610.000.31.12/116103112	SUPPLIES - HS MUSIC	\$63.39
10-3215.750.000.00.00/3215750	Band/major/flag/drill Tm - EQUIP-ORIGINAL & ADDL	\$1,508.50
	Vendor Total	\$2,029.28

Shaler Area School District
SUPPLEMENT C.1A 12-08-2021 2021-2022

	Account Number	Description	Amount
WAR01	WARD'S NAT SCI EST INC		
	WARD'S SCIENCE		
	10-1110.610.000.31.13/116103113	SUPPLIES - HS SCIENCE	\$32.29
	10-1110.610.000.31.13/116103113	SUPPLIES - HS SCIENCE	\$186.63
		Vendor Total	\$218.92
WAV51	WAVES EQUIPMENT SOURCE, INC.		
	10-2620.431.000.31.00/262043131	Operation/bldg Svc - Preventive Maintenance	\$105.00
	10-2620.431.000.31.00/262043131	Operation/bldg Svc - Preventive Maintenance	\$175.00
		Vendor Total	\$280.00
MAS44	W.B. MASON COMPANY, INC.		
	10-1110.610.000.11.00/1161011	GENERAL SUPPLIES - BURCHFIELD	\$16.41
	10-1110.610.000.11.02/116101102	BURCHFIELD - GENERAL SUPPLIES ART	\$15.21
	10-1110.610.000.11.02/116101102	BURCHFIELD - GENERAL SUPPLIES ART	\$24.16
	10-1110.610.000.13.02/116101302	MARZOLF - GENERAL SUPPLIES ART	\$22.90
	10-1110.610.000.13.02/116101302	MARZOLF - GENERAL SUPPLIES ART	\$177.30
	10-1110.610.000.13.02/116101302	MARZOLF - GENERAL SUPPLIES ART	\$380.32
	10-1110.610.000.13.02/116101302	MARZOLF - GENERAL SUPPLIES ART	\$55.82
	10-1110.610.000.15.00/1161015	GENERAL SUPPLIES - SCOTT	\$181.62
	10-1110.610.000.15.02/116101502	SCOTT - GENERAL SUPPLIES ART	\$162.32
	10-1110.610.000.19.02/6101902	MIDDLE/ELEM - GENERAL SUPPLIES ART	\$44.82
	10-1110.610.000.35.02/6103502	SUPPLIES - MIDDLE SCHOOL ART	\$3.51
	10-1110.610.000.35.02/6103502	SUPPLIES - MIDDLE SCHOOL ART	\$59.10
		Vendor Total	\$1,143.49
WEL05	WELLS FARGO FINANCIAL LEASING		
	10-2380.442.000.11.00/238044211	12/24/21 - 01/23/22	\$340.43
	10-2380.442.000.13.00/238044213	12/24/21 - 01/23/22	\$340.43
	10-2380.442.000.14.00/238044214	12/24/21 - 01/23/22	\$340.43
	10-2380.442.000.15.00/238044215	12/24/21 - 01/23/22	\$340.43
	10-2380.442.000.19.00/238044219	12/24/21 - 01/23/22	\$510.64
	10-2380.442.000.31.00/238044231	12/24/21 - 01/23/22	\$1,361.69
	10-2380.442.000.35.00/238044235	12/24/21 - 01/23/22	\$510.64
	10-2519.442.000.00.00/2510442	12/24/21 - 01/23/22	\$340.43
	10-2611.442.000.00.00/2610442	MINIMUM USAGE - 12/24/21 - 01/23/22	\$100.00
		Vendor Total	\$4,185.12
TW31	TARA WELLS		
	10-1110.610.000.31.09/116103109	REIMBURSEMENT FOR CLASSROOM SUPPLIES	\$162.92
WES36	WESTERN PA SCHOOL FOR BLIND CHILDREN		
	10-1224.323.890.30.00/122432389030	SK INTERVENER SERVICES FOR OCTOBER 2021	\$2,130.00
WES13	WESTERN PSYCHOLOGICAL SERVICES		
	10-2140.610.000.10.00/214061010	ELEMENTARY-GENERALSUPPLIES	\$36.85
	10-2140.610.000.10.00/214061010	ELEMENTARY-GENERALSUPPLIES	\$36.85
		Vendor Total	\$73.70
WIL33	WILSON LANGUAGE TRAINING CORP.		
	WILSON LANGUAGE TRAINING CORP.		
	10-1110.640.000.15.05/116401505	SCOTT - BOOKS	\$1,477.98
	10-1190.640.411.13.05/119644111305	Regular Inst-Federal Prog-Books-Title 1	\$2,608.20
		Vendor Total	\$4,086.18
WON02	WONDER WORKSHOP, INC.		
	10-1110.610.771.11.00/1161077111	Instruction-Regular Program - General Supplies	\$209.93
	10-1110.610.771.13.00/1161077113	Instruction-Regular Program - General Supplies	\$209.93
	10-1110.610.771.14.00/1161077114	Instruction-Regular Program - General Supplies	\$209.93
	10-1110.610.771.15.00/1161077115	Instruction-Regular Program - General Supplies	\$209.94

Shaler Area School District
SUPPLEMENT C.1A 12-08-2021 2021-2022

Account Number		Description	Amount	
			Vendor Total	\$839.73
YL01	BEN YECKEL			
	10-3265.510.000.00.00/3265510	TRANSPORT EQUIPMENT TO MS FOOTBALL GAMES		\$32.14
			Report Total	\$924,121.22

Vendor#	Vendor Name	Description	Amount
21-22 Year			
Fund 10			
000 TO BE DISTRIBUTED			
NES08	TODD NESLONEY	11/17 & 18, 2021 - TEACHER/ADMIN COACHING AT SCOTT PRIM & MA	\$8,500.00
004 Shaler			
BAT04	BRIAN BATKO / CHELSEA KLINE	REFUND FOR TAX YEAR 2021	\$398.96
BUE01	EDWARD BUECHL	REFUND FOR TAX YEAR 2021	\$673.39
DEM07	CHUCK DEMORE	REFUND FOR TAX YEAR 2021	\$678.00
GRO08	DALE GROCE & CHRISTINA GROCE	CUR REAL ESTATE TAX-SHALER - OVERPAYMENT	\$3,868.43
LU01	ALBERT LU / QING SHI	REFUND FOR TAX YEAR 2021	\$1,224.55
PAR08	JUSTIN RYAN PARRISH / ABBEY	REFUND FOR TAX YEAR 2021	\$262.89
ROK04	JOHN P & JENNIFER L ROKOSZ	REFUND FOR TAX YEAR 2021	\$205.24
SAN09	DAVID V P & MEGAN SANCHEZ	REFUND FOR TAX YEAR 2021	\$283.65
THO27	MELISSA LEE THORNTON	REFUND FOR TAX YEAR 2021	\$452.01
Total for 004 Shaler			\$8,047.12
038 Life Insurance			
HAR02	THE HARTFORD	EMPLOYER LIFE INS - 213 - DECEMBER 2021	\$7,798.17
230 Retirement			
PUB03	PUBLIC SCHOOL EMPLOYEES RETIREMENT SYS	B FOX - FUPT	\$340.55
		BARTOSH, MUTSCHLER, MARNICH, NATALIA, KARTAN, MORSS - WNC 20	\$27,012.30
		CB - FUPT - 2004 THROUGH 2009	\$19.84
		MK - FUPT - 2008/2009	\$196.73
Total for 230 Retirement			\$27,569.42
322 Prof Education Serv-ju			
AIU00	ALLEGHENY INTERMEDIATE UNIT	OCTOBER 2021 Physical Support - Prof Education Serv-ju Regul	\$16.69
		OCTOBER 2021 Physical Support - Prof Education Serv-ju	\$1,518.56
		OCTOBER 2021 Occupational Support - Prof Education Serv-ju	\$1,692.63
		OCTOBER 2021 Occupational Support - Prof Education Serv-ju	\$18,606.63
		TRANSPERFECT OCTOBER 2021 - SPANISH	\$15.30
GLA21	GLADE RUN LUTHERAN SERVICES	TT - OCTOBER 2021	\$382.50
		TT - OCTOBER 2021	\$45.00
Total for 322 Prof Education Serv-ju			\$22,277.31
323 Professional Educational Services - Other Educationa			
GRA66	GRADE POINT RESOURCES LLC	7TH INSTALLMENT - DECEMBER 2021	\$19,812.00
		IN SERVICE TRAINING PREPERATION - OCTOBER 11, 2021	\$700.00
		8TH INSTALLMENT - 4 BSC'S - JANUARY 2022	\$19,812.00
		6TH INSTALLMENT - NOVEMBER 2021	\$19,812.00
		IN SERVICE TRAINING WORK DAY - OCTOBER 11, 2021	\$345.00
MAX53	MAXIM HEALTHCARE SERVICES, INC.	10/20/21 - 10/29/21	\$1,300.00

Shaler Area School District
SUPPLEMENT C.1A 12-08-2021 B 2021-2022
Vendor # 01BB - rai21

Release Dates 08/31/07 - 03/10/22

Invoice # #03110 - WPS-416499

Vendor#	Vendor Name	Description	Amount
MAX53	MAXIM HEALTHCARE SERVICES, INC.	11/1/21 - 11/5/21	\$1,554.00
		11/15/21 - 11/19/21	\$1,950.00
		10/4/21 - 10/08/21	\$1,471.00
		11/8/21 - 11/11/12/21	\$1,771.00
WES36	WESTERN PA SCHOOL FOR BLIND CHILDREN	SK INTERVENER SERVICES FOR OCTOBER 2021	\$2,130.00
Total for 323 Professional Educational Services - Other Educationa			\$70,657.00
329 Professional Educational Services - Other			
FED07	JASON FEDOREK	FALL PLAY - SET DESIGN	\$500.00
330 Purch Other Prof Svc			
AMC22	AMCA SYSTEMS, LLC	RETIREE BILLING	\$52.00
GAI52	GAITENS, TUCCERI & NICHOLAS, P.C.	PROF SVCS. LEGAL COSTS	\$262.50
GYK01	CHELSEA GYKE, PHD	NB - IEP MEETING	\$50.00
		TE, SB, AW - EVALUATION REPORTS	\$1,500.00
PEN21	PA MUNICIPAL SVC CO	MILLVALE - 208 LIENS @ \$60	\$12,480.00
		SHALER TWP - 381 LIENS @ \$60	\$22,860.00
QUE01	QUEST DIAGNOSTICS	PURCH OTHER PROF SVC	\$35.50
RES06	RESERVE TOWNSHIP	CROSSING GUARDS - JULY, AUGUST & SEPTEMBER 2021	\$817.06
SHA11	TOWNSHIP OF SHALER	TRAFFIC CONTROL - MIDDLE/MARZOLF - 8/25, 26, 27, 30, 31, 9/1	\$946.89
MSZ01	SUSAN ELIZABETH MSZYCO	AR & AR - TWO FULL RE-ASSESSMENTS & RE-EVALUATION REPORTS	\$1,000.00
TUC08	TUCKER ARENSBERG, PC	PERSONNEL	\$577.50
		GENERAL	\$2,646.50
		RETAINER	\$850.00
VAL01	VALUATION ENGINEERS, INC.	SPECIAL ED MATTERS	\$33.00
		ANNUAL REVALUATION SERVICE RENDERED 2021	\$1,894.00
Total for 330 Purch Other Prof Svc			\$46,004.95
332 Deliquent			
PEN21	PA MUNICIPAL SVC CO	OCTOBER 2021	\$125.00
		OCTOBER 2021	\$35.85
Total for 332 Deliquent			\$160.85
333 Tax Appeal-legal			
TUC08	TUCKER ARENSBERG, PC	DELINQUENT TAX COLLECTIONS	\$7,939.50
		Legal Services - Tax Appeal-legal	\$2,230.25
Total for 333 Tax Appeal-legal			\$10,169.75
335 Tax Billing Costs			
JOR07	JORDAN TAX SERVICE, INC.	Tax Assess & Collect - Tax Billing Costs - Etna	\$1,519.84
		Tax Assess & Collect - Tax Billing Costs - Millvale	\$802.55
		Tax Assess & Collect - Tax Billing Costs - Reserve	\$6,168.00
		Tax Assess & Collect - Tax Billing Costs - Shaler	\$6,085.10
Total for 335 Tax Billing Costs			\$14,575.49

Shaler Area School District
SUPPLEMENT C.1A 12-08-2021 B 2021-2022

Vendor # 01BB - rai21

Vendor#	Vendor Name	Description	Amount
350 Security/safety Services			
CAP15	CAPITAL ASSET PROTECTION INC.	11/14/21 - 11/20/21	\$645.60
		11/21/21 - 11/27/21	\$355.08
		11/14/21 - 11/20/21	\$1,400.00
		11/7/21 - 11/13/21	\$2,045.60
		11/21/21 - 11/27/21	\$770.00
		10/31/21 - 11/6/21	\$1,636.48
		11/14/21 - 11/20/21	\$661.74
		11/7/21 - 11/13/21	\$661.74
		11/21/21 - 11/27/21	\$363.15
		10/31/21 - 11/6/21	\$532.62
		10/24/21 - 10/30/21	\$268.32
		11/14/21 - 11/20/21	\$89.44
		Total for 350 Security/safety Services	\$9,429.77
360 EMPLOYEE TRAINING/ DEVELOPMENT SERV			
APP14	APPLE INC.	Staff Dev/instruct/certified - ESSER III	\$6,500.00
410 Cleaning Services			
NOV54	NOVA SPORTS	Football - CLEANING SERVICES	\$794.00
		Football - CLEANING SERVICES	\$805.60
		Football - CLEANING SERVICES	\$241.60
		Total for 410 Cleaning Services	\$1,841.20
430 Repairs/maintenance			
GRA01	GRAINGER	KEYED PADLOCK - 2	\$41.60
431 Preventive Maintenance			
ABC06	ABCO FIRE PROTECTION INC	Operation/bldg Svc - Preventive Maintenance	\$90.00
AGX06	AGX INC	Operation/bldg Svc - Preventive Maintenance	\$158.36
		Operation/bldg Svc - Preventive Maintenance	\$158.36
		Operation/bldg Svc - Preventive Maintenance	\$158.36
		Operation/bldg Svc - Preventive Maintenance	\$158.37
		Operation/bldg Svc - Preventive Maintenance	\$158.37
		Operation/bldg Svc - Preventive Maintenance	\$158.18
BUG01	BUGS-B-GONE	Operation/bldg Svc - Preventive Maintenance	\$44.00
		Operation/bldg Svc - Preventive Maintenance	\$44.00
		Operation/bldg Svc - Preventive Maintenance	\$44.00
		Operation/bldg Svc - Preventive Maintenance	\$44.00
		Operation/bldg Svc - Preventive Maintenance	\$44.00
		Operation/bldg Svc - Preventive Maintenance	\$57.00
		Operation/bldg Svc - Preventive Maintenance	\$47.00
CIN12	CINTAS	Operation/bldg Svc - Preventive Maintenance	\$14.27
		Operation/bldg Svc - Preventive Maintenance	\$71.04
		Operation/bldg Svc - Preventive Maintenance	\$73.34
		Operation/bldg Svc - Preventive Maintenance	\$40.84
		Operation/bldg Svc - Preventive Maintenance	\$102.84
		Operation/bldg Svc - Preventive Maintenance	\$111.67
		Operation/bldg Svc - Preventive Maintenance	\$104.22
		Operation/bldg Svc - Preventive Maintenance	\$86.04

Shaler Area School District
SUPPLEMENT C.1A 12-08-2021 B 2021-2022

Release Dates 08/31/07 - 03/10/22

Vendor # 01BB - rai21

Invoice # #03110 - WPS-416499

Vendor#	Vendor Name	Description	Amount
GIE44	DAVID P GIEL GARAGE DOORS, LLC	Operation/bldg Svc - Preventive Maintenance	\$1,475.00
HAM23	INSTITUTIONAL DIVERSIFIED	Operation/bldg Svc - Preventive Maintenance	\$9,195.00
KNI05	KNIGHT SOUND & LIGHTING	Operation/bldg Svc - Preventive Maintenance	\$594.00
KUR04	KU RESOURCES, INC.	Operation/bldg Svc - Preventive Maintenance	\$40.25
		Operation/bldg Svc - Preventive Maintenance	\$40.25
MOB23	MOBILE MINI	Operation/bldg Svc - Preventive Maintenance	\$83.36
		Operation/bldg Svc - Preventive Maintenance	\$75.00
		Operation/bldg Svc - Preventive Maintenance	\$67.00
		Operation/bldg Svc - Preventive Maintenance	\$67.00
MRJ03	MR JOHN OF PITTSBURGH	Operation/bldg Svc - Preventive Maintenance	\$118.00
		Operation/bldg Svc - Preventive Maintenance	\$128.00
		Operation/bldg Svc - Preventive Maintenance	\$233.00
PES06	PESTCO INC	Operation/bldg Svc - Preventive Maintenance	\$65.00
		Operation/bldg Svc - Preventive Maintenance	\$71.50
		Operation/bldg Svc - Preventive Maintenance	\$44.00
		Operation/bldg Svc - Preventive Maintenance	\$40.00
		Operation/bldg Svc - Preventive Maintenance	\$30.00
		Operation/bldg Svc - Preventive Maintenance	\$30.00
		Operation/bldg Svc - Preventive Maintenance	\$33.00
		Operation/bldg Svc - Preventive Maintenance	\$85.00
		Operation/bldg Svc - Preventive Maintenance	\$85.00
		Operation/bldg Svc - Preventive Maintenance	\$93.50
		Operation/bldg Svc - Preventive Maintenance	\$120.00
		Operation/bldg Svc - Preventive Maintenance	\$132.00
		Operation/bldg Svc - Preventive Maintenance	\$255.55
		Operation/bldg Svc - Preventive Maintenance	\$220.00
		Operation/bldg Svc - Preventive Maintenance	\$200.00
ROS06	ROSSI FLOOR TECHNOLOGIES	Operation/bldg Svc - Preventive Maintenance	\$85.00
		Operation/bldg Svc - Preventive Maintenance	\$323.30
SCH24	SCHINDLER ELEVATOR CORP	Operation/bldg Svc - Preventive Maintenance	\$517.98
		Operation/bldg Svc - Preventive Maintenance	\$517.98
		Operation/bldg Svc - Preventive Maintenance	\$517.98
		Operation/bldg Svc - Preventive Maintenance	\$517.98
		Operation/bldg Svc - Preventive Maintenance	\$1,035.93
VINO5	VINCENT LIGHTING SYSTEMS	Operation/bldg Svc - Preventive Maintenance	\$430.00
WAV51	WAVES EQUIPMENT SOURCE, INC.	Operation/bldg Svc - Preventive Maintenance	\$105.00
		Operation/bldg Svc - Preventive Maintenance	\$175.00
		Total for 431 Preventive Maintenance	\$19,814.82
432 Repairs & Maintenance Svc			
RAY01	RAYBURG APPLIANCE SERVICE, INC.	Operation/bldg Svc - Repairs & Maintenance Svc	\$94.00
		REPAIRS&MAINTENANCESVC	\$164.50
		Total for 432 Repairs & Maintenance Svc	\$258.50
433 Repairs & Maintenance Srvcs Vehi			
JTT02	J & T TIRE CO., INC	Vehicle Oper & Maint - Repairs & Maintenance Srvcs Vehi	\$364.58
		Vehicle Oper & Maint - Repairs & Maintenance Srvcs Vehi	\$333.20
		Vehicle Oper & Maint - Repairs & Maintenance Srvcs Vehi	\$623.85
		Vehicle Oper & Maint - Repairs & Maintenance Srvcs Vehi	\$793.24
NAP21	NAPA AUTO/TRUCK PARTS OF ETNA	Vehicle Oper & Maint - Repairs & Maintenance Srvcs Vehi	\$26.98

Shaler Area School District
SUPPLEMENT C.1A 12-08-2021 B 2021-2022

Release Dates 08/31/07 - 03/10/22

Vendor # 01BB - rai21

Invoice # #03110 - WPS-416499

Vendor#	Vendor Name	Description	Amount
RIC53	RICCI'S REPAIR, LLC	Vehicle Oper & Maint - Repairs & Maintenance Svcs Vehi	\$661.44
VBF14	VB FABRICATORS INC.	Vehicle Oper & Maint - Repairs & Maintenance Svcs Vehi	\$312.00
Total for 433 Repairs & Maintenance Svcs Vehi			\$3,115.29
438 Maint&repair Infor Tech Eq/Infra			
ELT04	ELTECH SECURITY SYSTEMS INC	MAINT&REPAIR INFOR TECH EQ/INFRA - MIDDLE SCHOOL	\$1,891.36
442 Rental-equip&vehicles			
WEL05	WELLS FARGO FINANCIAL LEASING	12/24/21 - 01/23/22	\$340.43
		12/24/21 - 01/23/22	\$340.43
		12/24/21 - 01/23/22	\$340.43
		12/24/21 - 01/23/22	\$340.43
		12/24/21 - 01/23/22	\$510.64
		12/24/21 - 01/23/22	\$1,361.69
		12/24/21 - 01/23/22	\$510.64
		12/24/21 - 01/23/22	\$340.43
		MINIMUM USAGE - 12/24/21 - 01/23/22	\$100.00
Total for 442 Rental-equip&vehicles			\$4,185.12
510 Student Transport Svc			
YL01	BEN YECKEL	TRANSPORT EQUIPMENT TO MS FOOTBALL GAMES	\$32.14
513 Stdnt Tran Svcc-cont			
ABC57	ABC TRANSIT, INC	STUDENT TRANSPORT-PUBLIC	\$189,251.23
		STUDENT TRANSPORT-BEATTIE TECH	\$1,324.64
		STUDENT TRANSPORT-BEATTIE TECH	\$1,324.64
		STUDENT TRANSPORT-BEATTIE TECH	\$1,324.64
		STUDENT TRANSPORT-BEATTIE TECH	\$1,324.64
		STUDENT TRANSPORT-BEATTIE TECH	\$12,335.33
		STUDENT TRANSPORT-NON-PUBLIC	\$82,568.92
		STUDENT TRANSPORT-SPECIAL EDUC	\$9.00
		STUDENT TRANSPORT-SPECIAL EDUC	\$108,793.84
		STUDENT TRANSPORT-SPECIAL EDUC	\$-239.60
Total for 513 Stdnt Tran Svcc-cont			\$398,017.28
549 ADVERTISING			
PIT41	PITTSBURGH POST-GAZETTE	ADVERTISING - BIDS & PROPOSALS	\$664.95
		ADVERTISING FOR FT SCHOOL NURSE & FT PARAPROFESSIONALS	\$500.00
		ADVERTISING- FT SCHOOL NURSE & FT PARAPROFESSIONALS	\$317.00
Total for 549 ADVERTISING			\$1,481.95
563 Tuition/private Sch			
GLA21	GLADE RUN LUTHERAN SERVICES	JB & JB OCTOBER 2021	\$7,410.00
		TT - OCTOBER 2021	\$4,497.11
Total for 563 Tuition/private Sch			\$11,907.11

Shaler Area School District
SUPPLEMENT C.1A 12-08-2021 B 2021-2022

Release Dates 08/31/07 - 03/10/22

Vendor # 01BB - rai21

Invoice # #03110 - WPS-416499

Vendor#	Vendor Name	Description	Amount
567 Tuition To Appr Priv Sch (APS)			
CHI31	THE CHILDREN'S INSTITUTE	JM & JF 12/1/21 - 12/31/21	\$12,911.50
		JM & JF 11/1/21 - 11/30/21	\$13,671.00
Total for 567 Tuition To Appr Priv Sch (APS)			\$26,582.50
569 Tuition - Other			
PAC02	PA CONNECTING COMMUNITIES	AR - TRANSITION SERVICES - OCTOBER 2021	\$7,293.75
		JY - TRANSITION SERVICES - OCTOBER 2021	\$2,043.75
Total for 569 Tuition - Other			\$9,337.50
581 Travel Conference			
SB15	SHAUNA HUNT	PHEAA WORKSHOP IN CRANBERRY 9/30/21 - MILEAGE	\$21.45
LUD44	SHERRI LUDWIG	TRAVEL EXP TO FACILITIES, TRANSP, & SAFETY CONFERENCE IN LAN	\$647.64
PIT56	PITTSBURGH TROPHY CO.	Misc Athletics - CHAMPIONSHIP PLAYOFF EXP - GIRLS VOLLEYBALL	\$109.30
URS12	URSO BUS, LLC	Misc Athletics - CHAMPIONSHIP PLAYOFF EXP	\$3,800.00
Total for 581 Travel Conference			\$4,578.39
584 Travel Inter-District			
ABC57	ABC TRANSIT, INC	ID 2057 Office Of Principal - Inter-District	\$165.58
		ID 2055 Office Of Principal - Inter-District	\$165.58
		ID 2056 Office Of Principal - Inter-District	\$82.79
		ID 2054 Office Of Principal - Inter-District	\$165.58
DEM09	MELISSA DEMCHAK	AUGUST THROUGH SEPTEMBER 2021 MILEAGE	\$38.02
JK01	JOHN KAIB	NOVEMBER 2021 MILEAGE	\$123.14
		OCTOBER 2021 MILEAGE	\$151.00
CR31	CLINT RAUSCHER	Athletic Director - Travel Inter-District	\$129.15
		TRAVEL - MILEAGE, ETC.	\$405.70
JF01	JOANNE TOWNSEND	JULY THROUGH OCTOBER 2021 MILEAGE	\$41.10
Total for 584 Travel Inter-District			\$1,467.64
599 Misc Purchased Services			
82APC	SHALER AREA HIGH SCHOOL	FOOTBALL OFFICIALS - ARBITER PAYMENTS	\$771.00
		GIRLS SOCCER OFFICIALS - ARBITER PAYMENTS	\$290.00
		GIRLS VOLLEYBALL OFFICIALS - ARBITER PAYMENTS	\$170.00
		ARBITER PROCESSING FEES	\$25.80
REK04	THOMAS JON REKOWSKI	Football - MISC PURCHASED SERVICES	\$360.00
Total for 599 Misc Purchased Services			\$1,616.80
610 General Supplies			
ABC21	ABC GLASS & MIRROR, LLC	MAINT - GEN SUP - MARZOLF	\$513.60
		MAINT - GEN SUP - ELEM SCH	\$513.60
		MAINT - GEN SUP - MS	\$513.60
ACC03	ACCELERATED LEARNING FOUNDATION	GIFTED - GENERAL SUPPLIES - SECONDARY	\$297.50
ALP01	ALPHA CARD	MAINT - GEN SUP - ELEM SCH	\$502.00
		MAINT - GEN SUP - HS	\$502.00
AMA12	AMAZON.COM	SUPPLIES - HS SOCIAL STUDIES	\$125.96
		LIFE SKILLS - GENERAL SUPPLIES - SECONDARY	\$1,188.06
		LIFE SKILLS - GENERAL SUPPLIES - SECONDARY	\$21.98

Shaler Area School District
SUPPLEMENT C.1A 12-08-2021 B 2021-2022
Vendor # 01BB - rai21

Release Dates 08/31/07 - 03/10/22

Invoice # #03110 - WPS-416499

Vendor#	Vendor Name	Description	Amount
AMA12	AMAZON.COM	LIFE SKILLS - GENERAL SUPPLIES - SECONDARY	\$11.87
		LIFE SKILLS - GENERAL SUPPLIES - SECONDARY	\$3,011.96
		SCOTT - GENERAL SUPPLIES	\$48.26
AME35	AMERICAN RED CROSS	LIFEGUARD RECERT FOR TROPPEMAN, WARONSKY, GRANA, & GLATH	\$160.00
AQU01	AQUA CLEAN COMPANY INC	MAINT - GEN SUP - ELEM SCH	\$29.40
AQU02	AQUA FILTER FRESH INC	GENERAL SUPPLIES - ELEM SCHOOL	\$52.90
		SUPT - GENERAL SUPPLIES	\$54.45
ATD03	ATD	RENEWAL HEALTH FORM - MEMBERSHIP DUES FOR REGISTERED THERAPY	\$30.00
BHP21	B&H PHOTOVIDEO	EDUC - SUPPLIES - HS TECH ED	\$1,105.14
BRI01	BRIGHTON MUSIC CENTER	Instruction-Reg -Supplies-COVID Related	\$28.89
		Instruction-Reg -Supplies-COVID Related	\$38.67
BSN21	BSN SPORTS, LLC	GENERAL SUPPLIES - ELEM SCHOOL	\$1,006.52
		Basketball - Boys - GENERAL SUPPLIES	\$766.00
		Football - GENERAL SUPPLIES	\$990.00
NOR35	CAPITAL ONE TRADE CREDIT	Operation/bldg Svc - General Supplies	\$508.08
		VEHICLE - GEN SUP	\$24.80
COM05	COMDOC	GENERAL SUPPLIES	\$783.00
DEM01	DEMCO	MARZOLF - GENERAL SUPPLIES	\$258.53
DIS22	DIY MEDIA GROUP	EDUC - SUPPLIES - HS TECH ED	\$96.90
ENE07	ENERGY LIGHT, INC dba LIGHTMART.COM	MAINT - GEN SUP - HS	\$4,322.00
EQU16	EQUIPARTS CORPORATION	MAINT - GEN SUP - HS	\$221.66
GOP01	GOPHER SPORT	MARZOLF-PHYS ED SUPPLIES	\$239.62
		SUPPLIES - HS HEALTH & PHYS ED	\$496.16
		MAINT - GEN SUP - B&G	\$109.42
GRA01	GRAINGER	MAINT - GEN SUP - HS	\$175.12
		MAINT - GEN SUP - HS	\$36.17
		MAINT - GEN SUP - MS	\$573.19
		MAINT - GEN SUP - MS	\$316.08
		MAINT - GEN SUP - MS	\$466.40
		MAINT - GEN SUP - BURCHFIELD	\$62.28
GER12	H GERHARDT SUPPLY	MAINT - GEN SUP - MARZOLF	\$62.28
		MAINT - GEN SUP - RESERVE	\$62.28
		MAINT - GEN SUP - SCOTT	\$62.28
		MAINT - GEN SUP - ELEM SCH	\$62.28
HAS01	D HASTINGS CO INC	MAINT - GEN SUP - B&G	\$39.56
		MAINT - GEN SUP - B&G	\$21.90
		MAINT - GEN SUP - B&G	\$5.59
		MAINT - GEN SUP - B&G	\$10.78
		MAINT - GEN SUP - MARZOLF	\$2.98
JH01	JEANNE HOHLWEG	FLOWERS FOR RETIRING BOARD MEMEBER S DONAHUE	\$40.00
HOM14	HOME DEPOT CREDIT SERVICES	MAINT - GEN SUP - B&G	\$32.30
		MAINT - GEN SUP - BURCHFIELD	\$179.00
		MAINT - GEN SUP - RESERVE	\$11.84
		MAINT - GEN SUP - ELEM SCH	\$49.62
		MAINT - GEN SUP - ELEM SCH	\$290.42
		MAINT - GEN SUP - HS	\$-104.95
		MAINT - GEN SUP - HS	\$19.97
		MAINT - GEN SUP - HS	\$54.97
		MAINT - GEN SUP - HS	\$-57.98

Shaler Area School District
SUPPLEMENT C.1A 12-08-2021 B 2021-2022

Vendor # 01BB - rai21

Vendor#	Vendor Name	Description	Amount
HOM14	HOME DEPOT CREDIT SERVICES	MAINT - GEN SUP - HS	\$18.24
		MAINT - GEN SUP - MS	\$42.90
		MAINT - GEN SUP - MS	\$166.87
JF11	JEFFREY FRANK	REIMBURSEMENT FOR ART SUPPLIES FOR CLASSROOM	\$601.55
JOH55	JOHNSTONE SUPPLY	MAINT - GEN SUP - BURCHFIELD	\$9.47
		MAINT - GEN SUP - ELEM SCH	\$366.29
		MAINT - GEN SUP - HS	\$158.28
		MAINT - GEN SUP - MS	\$942.68
LUD44	SHERRI LUDWIG	NOVEMBER & DECEMBER 2021 CELL PHONE ALLOWANCE	\$100.00
		L TAGMYER - SPS - STUDENT NEEDS	\$50.00
HIT41	MAYER ELECTRIC SUPPLY COMPANY, INC.	MAINT - GEN SUP - MARZOLF	\$9.74
		MAINT - GEN SUP - ELEM SCH	\$60.39
		MAINT - GEN SUP - HS	\$65.67
		MAINT - GEN SUP - HS	\$934.96
		MAINT - GEN SUP - HS	\$66.36
		MAINT - GEN SUP - MS	\$109.55
MED02	MEDCO SUPPLY CO	MARZOLF - GENERAL SUPPLIES	\$102.74
		GENERAL SUPPLIES	\$11.40
MET06	METCO SUPPLY INC	MARZOLF - GENERAL SUPPLIES ART	\$44.80
		GENERAL SUPPLIES - ELEM SCHOOL	\$31.50
		BURCHFIELD - GENERAL SUPPLIES	\$3.81
		MARZOLF - GENERAL SUPPLIES	\$27.09
		RESERVE - GENERAL SUPPLIES	\$19.64
		SCOTT - GENERAL SUPPLIES	\$2.76
		GENERAL SUPPLIES	\$9.40
		GENERAL SUPPLIES	\$7.05
		Nursing Services - General Supplies	\$37.64
		Nursing Services - General Supplies	\$24.60
		Misc Activities - HS - GENERAL SUPPLIES	\$56.40
LM35	LORI MISH	SUPPLIES - MIDDLE SCHOOL FACs	\$40.22
MUS16	MUSIC IS ELEMENTARY	RESERVE - GENERAL SUPPLIES	\$110.00
NAP21	NAPA AUTO/TRUCK PARTS OF ETNA	MAINT - GEN SUP - B&G	\$29.37
		MAINT - GEN SUP - B&G	\$-18.00
		MAINT - GEN SUP - ELEM SCH	\$105.97
NAT62	NATIONAL ART & SCHOOL SUPPLIES INC.	GENERAL SUPPLIES - BURCHFIELD	\$245.70
		GENERAL SUPPLIES - MARZOLF	\$732.55
OFF03	OFFICE DEPOT	GENERAL SUPPLIES - ELEM SCHOOL	\$243.88
		GENERAL SUPPLIES - HIGH SCHOOL	\$36.49
		GENERAL SUPPLIES - HIGH SCHOOL	\$23.63
		FINANCIAL - GENERAL SUPPLIES	\$199.99
PEP12	J W PEPPER & SON, INC.	SUPPLIES - HS MUSIC	\$87.00
		SUPPLIES - MIDDLE MUSIC	\$106.94
PIT53	PITTSBURGH STAGE INC	MAINT - GEN SUP - HS	\$770.00
PIT56	PITTSBURGH TROPHY CO.	SUPT - GENERAL SUPPLIES	\$92.40
PIT06	PITT SPECIALTY SUPPLY, INC	MAINT - GEN SUP - HS	\$1,072.46
PYR21	PYRAMID SCHOOL PRODUCTS	GENERAL SUPPLIES - MARZOLF	\$133.20
		GENERAL SUPPLIES - ELEM SCHOOL	\$16.74
		BURCHFIELD - GENERAL SUPPLIES	\$27.90
		MARZOLF - GENERAL SUPPLIES	\$16.03

Shaler Area School District
SUPPLEMENT C.1A 12-08-2021 B 2021-2022

Release Dates 08/31/07 - 03/10/22

Vendor # 01BB - rai21

Invoice # #03110 - WPS-416499

Vendor#	Vendor Name	Description	Amount
PYR21	PYRAMID SCHOOL PRODUCTS	RESERVE - GENERAL SUPPLIES	\$4.88
		GENERAL SUPPLIES	\$34.75
ROB23	LINDA ROBERTSON	PROFESSIONAL DEVELOPMENT	\$103.79
SCH44	SCHAEDLER YESCO	MAINT - GEN SUP - SCOTT	\$660.00
MIC06	HENRY SCHEIN INC.	BURCHFIELD - GENERAL SUPPLIES	\$28.13
		MARZOLF - GENERAL SUPPLIES	\$37.42
		RESERVE - GENERAL SUPPLIES	\$52.26
		SCOTT - GENERAL SUPPLIES	\$7.76
		Nursing Services - General Supplies	\$10.38
SCH36	SCHOOL HEALTH CORPORATION	BURCHFIELD - GENERAL SUPPLIES	\$1.90
		MARZOLF - GENERAL SUPPLIES	\$37.21
		MARZOLF - GENERAL SUPPLIES	\$0.54
		RESERVE - GENERAL SUPPLIES	\$61.05
		SCOTT - GENERAL SUPPLIES	\$15.63
		GENERAL SUPPLIES	\$1.08
		GENERAL SUPPLIES	\$140.32
		Nursing Services - General Supplies	\$31.60
SHA07	SHALER AREA CAFETERIA ACCT	SALAD LUNCHESES FOR MEETING	\$21.75
		ZESTA SALTINE CRACKERS	\$14.10
SIT03	SitSpots	Instruction-Regular Program - General Supplies	\$71.90
		Instruction-Regular Program - General Supplies	\$71.90
		Instruction-Regular Program - General Supplies	\$71.90
		Instruction-Regular Program - General Supplies	\$71.91
SUN56	SUNBURY CONTROLS, INC.	MAINT - GEN SUP - BURCHFIELD	\$120.36
		MAINT - GEN SUP - MS	\$248.00
TEC54	TECH SUPPORT SPS	SUPPLIES - HS ART	\$815.45
TER33	TERRAPIN - TOOLS FOR THINKING	Instruction-Regular Program - General Supplies	\$245.64
		Instruction-Regular Program - General Supplies	\$245.64
		Instruction-Regular Program - General Supplies	\$245.64
		Instruction-Regular Program - General Supplies	\$245.62
THE03	THERMOFLO EQUIPMENT COMPANY INC	MAINT - GEN SUP - RESERVE	\$18.07
VIT04	VITA PERSONA LLC	BURCHFIELD - GENERAL SUPPLIES	\$81.60
		MARZOLF - GENERAL SUPPLIES	\$340.00
		RESERVE - GENERAL SUPPLIES	\$163.20
		SCOTT - GENERAL SUPPLIES	\$108.80
		GENERAL SUPPLIES	\$204.00
		GENERAL SUPPLIES	\$163.20
		Nursing Services - General Supplies	\$190.40
VOL01	VOLKWEIN'S	MIDDLE/ELEM - GENERAL SUPPLIES	\$240.00
		MIDDLE/ELEM - GENERAL SUPPLIES	\$49.99
		SUPPLIES - HS MUSIC	\$167.40
		SUPPLIES - HS MUSIC	\$63.39
WAR01	WARD'S SCIENCE	SUPPLIES - HS SCIENCE	\$32.29
		SUPPLIES - HS SCIENCE	\$186.63
MAS44	W.B. MASON COMPANY, INC.	GENERAL SUPPLIES - BURCHFIELD	\$16.41
		BURCHFIELD - GENERAL SUPPLIES ART	\$15.21
		BURCHFIELD - GENERAL SUPPLIES ART	\$24.16
		MARZOLF - GENERAL SUPPLIES ART	\$22.90
		MARZOLF - GENERAL SUPPLIES ART	\$177.30
		MARZOLF - GENERAL SUPPLIES ART	\$380.32
		MARZOLF - GENERAL SUPPLIES ART	\$55.82

Shaler Area School District
SUPPLEMENT C.1A 12-08-2021 B 2021-2022

Vendor # 01BB - rai21

Invoice # #03110 - WPS-416499

Vendor#	Vendor Name	Description	Amount
MAS44	W.B. MASON COMPANY, INC.	GENERAL SUPPLIES - SCOTT	\$181.62
		SCOTT - GENERAL SUPPLIES ART	\$162.32
		MIDDLE/ELEM - GENERAL SUPPLIES ART	\$44.82
		SUPPLIES - MIDDLE SCHOOL ART	\$3.51
		SUPPLIES - MIDDLE SCHOOL ART	\$59.10
TW31	TARA WELLS	REIMBURSEMENT FOR CLASSROOM SUPPLIES	\$162.92
WES13	WESTERN PSYCHOLOGICAL SERVICES	ELEMENTARY-GENERALSUPPLIES	\$36.85
		ELEMENTARY-GENERALSUPPLIES	\$36.85
WON02	WONDER WORKSHOP, INC.	Instruction-Regular Program - General Supplies	\$209.93
		Instruction-Regular Program - General Supplies	\$209.93
		Instruction-Regular Program - General Supplies	\$209.93
		Instruction-Regular Program - General Supplies	\$209.94
		Total for 610 General Supplies	\$37,148.46
611 Uniforms			
BSN21	BSN SPORTS, LLC	Basketball - Girls - UNIFORMS	\$7,301.00
		Softball - UNIFORMS	\$3,393.09
		Swimming - Boys & Girls - UNIFORMS	\$1,135.78
SOU03	SOUTHEASTERN PERFORMANCE APPAREL	Chorus - UNIFORMS	\$970.49
		Total for 611 Uniforms	\$12,800.36
622 Electricity			
SHA11	TOWNSHIP OF SHALER	Electricity - ELEM SCHOOL	\$80.55
626 Gasoline			
ABC57	ABC TRANSIT, INC	DIESEL FUEL inv 1713910	\$-13,546.40
		DIESEL FUEL inv 1714249	\$-13,600.08
		DIESEL FUEL inv 1708118	\$-14,168.64
PET52	PETROLEUM TRADERS CORP	DIESEL FUEL	\$13,600.08
		DIESEL FUEL	\$13,546.40
		Total for 626 Gasoline	\$-14,168.64
635 Meals / Refreshments			
SHA07	SHALER AREA CAFETERIA ACCT	VETERAN'S BREAKFAST PARADE	\$196.35
640 Books			
ABD21	ABDO PUBLISHING CO	LIBRARY - BOOKS - SCOTT	\$1,509.60
AMA12	AMAZON.COM	LIBRARY - BOOKS - ELEM SCHOOL	\$74.90
		LIBRARY - BOOKS - ELEM SCHOOL	\$22.95
EDG04	EDGENUITY INC	BOOKS - MIDDLE SCHOOL MATH	\$200.00
		BOOKS - MIDDLE SCHOOL MATH	\$200.00
FOL01	FOLLETT SCHOOL SOLUTIONS, INC.	LIBRARY - BOOKS - BURCHFIELD	\$84.38
		LIBRARY - BOOKS - MARZOLF	\$3,166.02
		LIBRARY - BOOKS - MARZOLF	\$59.74
		LIBRARY - BOOKS - RESERVE	\$39.45
		LIBRARY - BOOKS - RESERVE	\$90.99
		LIBRARY - BOOKS - SCOTT	\$876.83
		LIBRARY - BOOKS - SCOTT	\$589.10
		LIBRARY - BOOKS - ELEM SCHOOL	\$1,142.05

Shaler Area School District
SUPPLEMENT C.1A 12-08-2021 B 2021-2022

Release Dates 08/31/07 - 03/10/22

Vendor # 01BB - rai21

Invoice # #03110 - WPS-416499

Vendor#	Vendor Name	Description	Amount
FOL01	FOLLETT SCHOOL SOLUTIONS, INC.	LIBRARY - BOOKS - ELEM SCHOOL	\$457.56
		LIBRARY - BOOKS - ELEM SCHOOL	\$447.62
		LIBRARY - BOOKS - HS	\$473.67
		LIBRARY - BOOKS - MIDDLE SCHOOL	\$919.44
		LIBRARY - BOOKS - MIDDLE SCHOOL	\$534.74
JAP31	J. APPLESEED PUBLISHERS CO-OP	LIBRARY - BOOKS - SCOTT	\$43.90
LEA35	LEARNING ALLY	LIBRARY - BOOKS - HS	\$2,499.00
LER06	LERNER PUBLICATIONS GROUP	LIBRARY - BOOKS - SCOTT	\$542.95
MCG52	MCGRAW-HILL EDUCATION, INC.	BOOKS - RESERVE MATH	\$23.35
ROS01	ROSEN PUBLISHING CO	LIBRARY - BOOKS - SCOTT	\$96.75
		LIBRARY - BOOKS - SCOTT	\$184.05
SAV02	SAVVAS LEARNING COMPANY LLC	BOOKS - ELEM SCHOOL LANG ARTS	\$5,560.44
WIL33	WILSON LANGUAGE TRAINING CORP.	SCOTT - BOOKS	\$1,477.98
		Regular Inst-Federal Prog-Books-Title 1	\$2,608.20
Total for 640 Books			\$23,925.66

648 Books&periodicals On Elec Media

JAP31	J. APPLESEED PUBLISHERS CO-OP	LIBRARY - ELEC MEDIA BOOKS&PERIODICALS - SCOTT	\$424.28
		LIBRARY - ELEC MEDIA BOOKS&PERIODICALS - SCOTT	\$17.99
LER06	LERNER PUBLICATIONS GROUP	LIBRARY - ELEC MEDIA BOOKS&PERIODICALS - SCOTT	\$1,434.01
		LIBRARY - ELEC MEDIA BOOKS&PERIODICALS - ELEM SCHOOL	\$1,659.40
Total for 648 Books&periodicals On Elec Media			\$3,535.68

650 Supplies & Fees Technology Related

AMA12	AMAZON.COM	CREDIT FOR RETURNED MERCHANDISE - REFERENCE PO 20211267	\$-107.11
		CREDIT FOR RETURNED MERCHANDISE - REFERENCE PO 20211267	\$-66.11
BHP21	B&H PHOTOVIDEO	SOFTWARE SUPPLIES & LICENSING	\$33.48
DON04	ROBIN DONOVAN	REIMBURSE FOR EASY CBM LICENSE FOR PROGRESS MONITORING	\$49.99
PIT12	PITTSBURGH CARTRIDGE CO	INSTRUCTIONAL - SOFTWARE SUP & LICENSING - HIGH SCHOOL	\$177.00
TMO01	T-MOBILE USA INC.	Instruction-Regular Program - Supplies & Fees Technology Rel	\$400.00
		Instruction-Regular Program - Supplies & Fees Technology Rel	\$400.00
VER04	TYLER TECHNOLOGIES, INC.	SOFTWARE SUPPLIES & LICENSING	\$863.12
Total for 650 Supplies & Fees Technology Related			\$1,750.37

750 Equip-original & Addl

VOL01	VOLKWEIN'S	Band/major/flag/drill Tm - EQUIP-ORIGINAL & ADDL	\$1,508.50
-------	------------	--	------------

758 Capital New Hardware Software

AMA12	AMAZON.COM	CREDIT FOR MERCHANDISE - REFERENCE PO # 20200937	\$-12.11
BHP21	B&H PHOTOVIDEO	Instruction-Reg-Capital New Hard/Soft	\$383.00
		Instruction-Reg-Capital New Hard/Soft	\$1,692.60
CDW41	CDW GOVERNMENT	Instruction-Regular Program - Capital New Hardware Software	\$66,625.00
		Instruction-Regular Program - Capital New Hardware Software	\$58,650.00

Shaler Area School District
SUPPLEMENT C.1A 12-08-2021 B 2021-2022

Release Dates 08/31/07 - 03/10/22

Vendor # 01BB - rai21

Invoice # #03110 - WPS-416499

Vendor#	Vendor Name	Description	Amount
CDW41	CDW GOVERNMENT	Instruction-Regular Program - Capital New Hardware Software	\$6,500.00
Total for 758 Capital New Hardware Software			\$133,838.49
760 Equipment-replacement			
AMA12	AMAZON.COM	PRINCIPAL -EQUIP-REPLACEMENT - MIDDLE SCH	\$30.99
810 Dues & Fees			
ACA03	ACADEMIC HALLMARKS INC	KNOWLEDGE MASTER OPEN - ONE HIGH SCHOOL TEAM	\$40.00
AME71	ASHA	DUES/FEES - SPEECH & LANG SUPPORT -ACCESS	\$253.00
		DUES/FEES - SPEECH & LANG SUPPORT -ACCESS	\$253.00
		DUES/FEES - SPEECH & LANG SUPPORT -ACCESS	\$253.00
		DUES/FEES - SPEECH & LANG SUPPORT -ACCESS	\$253.00
		DUES/FEES - SPEECH & LANG SUPPORT -ACCESS	\$253.00
		DUES/FEES - SPEECH & LANG SUPPORT -ACCESS	\$253.00
BH01	BETHANY BAKER	PenSPRA DUES	\$95.00
BIG04	BIGGEST FAN, INC.	Misc Athletics - DUES & FEES	\$1,200.00
PME02	PMEA	PMEA DISTRICT 1 BAND WEST FESTIVAL - 2 STUDENTS	\$120.00
Total for 810 Dues & Fees			\$2,973.00
880 Refund/prior Yr Recpt			
BAT04	BRIAN BATKO	REFUND FOR TAX YEAR 2020	\$537.32
		REFUND FOR TAX YEAR 2019	\$537.32
ROK04	JOHN P & JENNIFER L ROKOSZ	REFUND FOR TAX YEAR 2020	\$320.55
SAN09	DAVID V P & MEGAN SANCHEZ	REFUND FOR TAX YEAR 2019	\$398.96
		REFUND FOR TAX YEAR 2020	\$348.27
Total for 880 Refund/prior Yr Recpt			\$2,142.42
Total for Fund 10			\$924,121.22
21-22 \$924,121.22			Report Total \$924,121.22

Date: 12/03/21
 Time: 12:02:44

Shaler Area School District
SUPPLEMENT C.1A CHECK LIST NOVEMBER 30, 2021 2021-2022

Page: 1
 BAR055

Check Dates 07/12/02 - 12/03/21

Check # 00001000 - 99999999

Check	Date	Vendor#	Vendor Name	P.O.	F/P	Inv Date	Invoice #	Check Amount	Batch	Src	Stat
10-0101.002.000.00.00	Cash - PNC Bank										
10189115	11/05/21	ZZ29	RONDA J. WINNECOUR					\$1,393.04	20211191	CC	R
			EMPLOYEE - GARNISHMENT - E FOR CHAPTER 13	047025 / 10-0470.025.000.00.00		11/05/21	PY-VD13E-20211105P	1,393.04			
10189116	11/05/21	KEY53	KEYSTONE COLLECTIONS GROUP					\$162.02	20211191	CC	R
			EMPLOYEE - GARNISHMENT - NORTH ALLEGHENY SD	047025 / 10-0470.025.000.00.00		11/05/21	PY-VD13NA-20211105P	162.02			
10189117	11/05/21	ZZ06	NORTH DISTRICTS COMMUNITY CREDIT UNION					\$44,722.88	20211191	CC	R
			EMPLOYEE - CREDIT UNION	047042 / 10-0470.042.000.00.00		11/05/21	PY-VD07-20211105P	44,722.88			
10189118	11/05/21	ZZ16	TEAMSTERS LOCAL 205					\$3,245.00	20211191	CC	R
			EMPLOYEE - CUSTODIAN DUES	047032 / 10-0470.032.000.00.00		11/05/21	PY-VD06-20211105P	3,245.00			
10189119	11/05/21	ZZ17	TEAMSTERS LOCAL 205					\$4,928.00	20211191	CC	R
			EMPLOYEE - CLERICAL DUES	047031 / 10-0470.031.000.00.00		11/05/21	PY-VD05-20211105P	4,928.00			
10189120	11/03/21	APP14	APPLE INC.					\$570.00	20211101	CC	R
			SOFTWARE SUPPLIES & LICENSING	2818618 / 10-2818.650.000.00.00	20210950	F	08/23/21	AF33503473	570.00		
10189121	11/03/21	CON90	CONSOLIDATED COMMUNICATIONS					\$3,227.84	20211101	CC	R
			10/16/21 - 11/15/21	262053801 / 10-2620.538.000.01.00		10/16/21	4124928577OCT21	275.26			
			10/16/21 - 11/15/21	262053811 / 10-2620.538.000.11.00		10/16/21	4124921325OCT21	137.83			
			10/16/21 - 11/15/21	262053812 / 10-2620.538.000.12.00		10/16/21	4124868663OCT21	137.63			
			10/16/21 - 11/15/21	262053813 / 10-2620.538.000.13.00		10/16/21	4124868702OCT21	172.30			
			10/16/21 - 11/15/21	262053814 / 10-2620.538.000.14.00		10/16/21	4123214507OCT21	68.82			
			10/16/21 - 11/15/21	262053815 / 10-2620.538.000.15.00		10/16/21	4124921345OCT21	149.01			
			10/16/21 - 11/15/21	262053831 / 10-2620.538.000.31.00		10/16/21	4126841076OCT21	741.76			
			10/16/21 - 11/15/21	262053835 / 10-2620.538.000.35.00		10/16/21	4124878207OCT21	522.07			
			10/16/21 - 11/15/21	262053835 / 10-2620.538.000.35.00		10/16/21	4124877245OCT21	345.19			
			10/16/21 - 11/15/21	262053835 / 10-2620.538.000.35.00		10/16/21	4126840042OCT21	677.97			
10189122	11/03/21	FLU02	FLUENCY MATTERS					\$108.00	20211101	CC	R
			INSTRUCTIONAL - GEN SUP - HS WORLD LANGUAGES	6103106 / 10-1110.610.000.31.06	20210796	F	07/27/21	107772	108.00		

Date: 12/03/21
 Time: 12:02:44

Shaler Area School District
SUPPLEMENT C.1A CHECK LIST NOVEMBER 30, 2021 2021-2022

Page: 2
 BAR055

Check Dates 07/12/02 - 12/03/21

Check # 00001000 - 99999999

Check	Date	Vendor#	Vendor Name	P.O.	F/P	Inv Date	Invoice #	Check Amount	Batch	Src	Stat
10-0101.002.000.00.00 Cash - PNC Bank											
10189122	11/03/21	FLU02	FLUENCY MATTERS					\$108.00	20211101	CC	R
10189123	11/03/21	PEN78	PENNSYLVANIA BAR ASSOCIATION					\$125.00	20211101	CC	R
			STATE WIDE MOCK TRIAL TEAM PAYMENT	124381030 / 10-1243.810.000.30.00		11/01/21	2022MOCKTRIAL	125.00			
10189124	11/03/21	ALL55	ALLIED WASTE SERVICES					\$485.00	20211101	CC	R
			MAINT - DISPOSAL SERVICES - HS	262041131 / 10-2620.411.000.31.00	20210450	P	09/30/21	0264-002759769	485.00		
10189125	11/03/21	ALL55	ALLIED WASTE SERVICES					\$4,292.24	20211101	CC	R
			MAINT -DISPOSAL SERVICES - BURCHFIELD	262041111 / 10-2620.411.000.11.00	20210450	P	10/20/21	0264-002763062	470.76		
			MAINT - DISPOSAL SERVICES - MARZOLF	262041113 / 10-2620.411.000.13.00	20210450	P	10/20/21	0264-002763062	397.02		
			MAINT - DISPOSAL SERVICES - RESERVE	262041114 / 10-2620.411.000.14.00	20210450	P	10/20/21	0264-002763062	455.60		
			MAINT - DISPOSAL SERVICES - SCOTT	262041115 / 10-2620.411.000.15.00	20210450	P	10/20/21	0264-002763062	363.20		
			MAINT - DISPOSAL SERVICES - HS	262041131 / 10-2620.411.000.31.00	20210450	P	10/20/21	0264-002763062	972.32		
			MAINT - DISPOSAL SERVICES - MIDDLE SCHOOL	262041135 / 10-2620.411.000.35.00	20210450	P	10/20/21	0264-002763062	904.48		
			MAINT - Disposal Services - ELEM SCHOOL	262041119 / 10-2620.411.000.19.00	20210450	P	10/20/21	0264-002763062	728.86		
10189126	11/03/21	SHO54	SHOP 'N SAVE					\$377.83	20211101	CC	R
			WEEKLY PURCHASES	116103109 / 10-1110.610.000.31.09			11/01/21	11012021	217.66		
			WEEKLY PURCHASES	121161030 / 10-1211.610.000.30.00			11/01/21	11012021	160.17		
10189127	11/03/21	TMO01	T-MOBILE USA INC.					\$800.00	20211101	CC	R
			Instruction-Regular Program - Supplies & Fees	111065099010 / 10-1110.650.990.10.00	20211306	P	11/03/21	970745019NOV21	400.00		
			Technology Rel								
			Instruction-Regular Program - Supplies & Fees	111065099030 / 10-1110.650.990.30.00	20211306	P	11/03/21	970745019NOV21	400.00		
			Technology Rel								
10189128	11/03/21	UGI53	UGI ENERGY SERVICES, LLC					\$10,873.17	20211101	CC	R
			NATURAL GAS - BURCHFIELD 9/22/21 - 10/20/21	262062111 / 10-2620.621.000.11.00			10/26/21	G5130542	1,043.54		
			NATURAL GAS - MARZOLF 9/15/21 - 10/14/21	262062113 / 10-2620.621.000.13.00			10/26/21	G5130400	52.77		
			NATURAL GAS - HIGH SCHOOL 9/15/21 - 10/14/21	262062131 / 10-2620.621.000.31.00			10/26/21	G5130317	4,692.02		
			NATURAL GAS - MIDDLE SCHOOL 9/15/21 - 10/14/21	262062135 / 10-2620.621.000.35.00			10/26/21	G5130503	2,833.03		

Date: 12/03/21

Time: 12:02:44

Check Dates 07/12/02 - 12/03/21

Shaler Area School District
SUPPLEMENT C.1A CHECK LIST NOVEMBER 30, 2021 2021-2022

Page: 3

BAR055

Check # 00001000 - 99999999

Check	Date	Vendor#	Vendor Name	P.O.	F/P	Inv Date	Invoice #	Check Amount	Batch	Src	Stat
10-0101.002.000.00.00 Cash - PNC Bank											
10189128	11/03/21	UGI53	UGI ENERGY SERVICES, LLC					\$10,873.17	20211101	CC	R
			NATURAL GAS - ELEM SCHOOL 9/8/21 - 10/7/21	262062119 / 10-2620.621.000.19.00		10/26/21	G5130472	2,251.81			
10189129	11/03/21	WEL05	WELLS FARGO FINANCIAL LEASING					\$186.00	20211101	CC	R
			10/17/21 - 11/16/21	2510442 / 10-2519.442.000.00.00		10/22/21	5017359927	186.00			
10189130	11/03/21	WPI52	WPIBL					\$320.00	20211101	CC	R
			Misc Athletics - DUES & FEES	3299810 / 10-3299.810.000.00.00	20211499	F	11/03/21	2021-2022	320.00		
10189131	11/04/21	JE31	JUSTIN ESKRA					\$225.00	20211101	CC	R
			Advance for meals for SC States in Hershey, PA	3299581 / 10-3299.581.000.00.00		11/04/21	11042021	225.00			
10189132	11/10/21	A*9788	PA DEPT OF AGRICULTURE					\$35.00	20211101	CC	O
			RENEWAL FOR PESTICIDE BUSINESS LICENSE 1/1/22 - 12/31/22	262081011 / 10-2620.810.000.11.00		11/10/21	BU0624	35.00			
10189133	11/10/21	BET01	BETHEL PARK SCHOOL DISTRICT					\$50.00	20211101	CC	R
			2021 DISTRICT VII ATHLETIC DIRECTORS ASSOCIATION DUES	3299810 / 10-3299.810.000.00.00		11/04/21	81621	50.00			
10189134	11/10/21	SHO54	SHOP 'N SAVE					\$502.56	20211101	CC	R
			WEEKLY PURCHASES	116103109 / 10-1110.610.000.31.09		11/08/21	11082021	262.60			
			WEEKLY PURCHASES	121161030 / 10-1211.610.000.30.00		11/08/21	11082021	239.96			
10189135	11/10/21	HAR02	THE HARTFORD					\$7,995.96	20211101	CC	R
			EMPLOYER LIFE INS - 213 - NOVEMBER 2021	047538 / 10-0475.038.000.00.00		11/10/21	646885489838	7,995.96			
10189136	11/10/21	UGI53	UGI ENERGY SERVICES, LLC					\$65.96	20211101	CC	R
			NATURAL GAS - RESERVE 9/29/21 - 10/28/21	262062114 / 10-2620.621.000.14.00		11/03/21	G5137538	65.96			
10189137	11/10/21	UKI01	UK INTERNATIONAL SOCCER					\$3,990.00	20211101	CC	R
			ASSISTANT SOCCER COACH	327333030 / 10-3273.330.000.30.00		11/10/21	MSSOC	3,990.00			
10189138	11/12/21	PS31	PAUL STADELMAN					\$340.00	20211101	CC	R
			ADVANCE ON LUNCHES - 34 @ \$10.00	3299581 / 10-3299.581.000.00.00		11/12/21	11-12-21	340.00			

Date: 12/03/21
 Time: 12:02:44

Shaler Area School District
SUPPLEMENT C.1A CHECK LIST NOVEMBER 30, 2021 2021-2022

Page: 4
 BAR055

Check Dates 07/12/02 - 12/03/21

Check # 00001000 - 99999999

Check	Date	Vendor#	Vendor Name	P.O.	F/P	Inv Date	Invoice #	Check Amount	Batch	Src	Stat
10-0101.002.000.00.00	Cash - PNC Bank										
10189138	11/12/21	PS31	PAUL STADELMAN					\$340.00	20211101	CC	R
10189139	11/19/21	ZZ29	RONDA J. WINNECOUR					\$1,393.04	20211192	CC	R
			EMPLOYEE - GARNISHMENT - E FOR CHAPTER 13	047025 / 10-0470.025.000.00.00		11/19/21	PY-VD13E-20211119P	1,393.04			
10189140	11/19/21	ZZ06	NORTH DISTRICTS COMMUNITY CREDIT UNION					\$44,886.22	20211192	CC	R
			EMPLOYEE - CREDIT UNION	047042 / 10-0470.042.000.00.00		11/19/21	PY-VD07-20211119P	44,886.22			
10189141	11/19/21	ZZ15	SHALER AREA EDUCATION ASSOCIATION					\$35,882.67	20211192	CC	R
			EMPLOYEE - TEACHER DUES	047030 / 10-0470.030.000.00.00		11/19/21	PY-VD04-20211119P	35,882.67			
10189142	11/17/21	SUN02	CROWN CASTLE					\$2,496.40	20211101	CC	R
			TRANSPORT/TELECOMMUNICATIONS	2620538 / 10-2620.538.000.00.00	20210692	P	11/01/21 963382	2,496.40			
10189143	11/17/21	SHO54	SHOP 'N SAVE					\$201.07	20211101	CC	O
			WEEKLY PURCHASES	116103109 / 10-1110.610.000.31.09		11/15/21	11152021	77.03			
			WEEKLY PURCHASES	6103509 / 10-1110.610.000.35.09		11/15/21	11152021	58.81			
			WEEKLY PURCHASES	121161030 / 10-1211.610.000.30.00		11/15/21	11152021	65.23			
10189144	11/17/21	WIL54	GEORGE WILLIAMS					\$270.00	20211101	CC	R
			BOYS & GIRLS SOCCER ASSIGNOR DUES	3273599 / 10-3273.599.000.00.00		11/10/21	11621	270.00			
10189335	11/18/21	ACC99	AGORA CYBER CHARTER SCHOOL					\$5,812.42	20211105	CC	O
			TUITION THROUGH NOVEMBER 2021	1156230 / 10-1110.562.000.30.00		11/11/21	759749	2,008.90			
			TUITION THROUGH NOVEMBER 2021	124156230 / 10-1241.562.000.30.00		11/11/21	759749	3,803.52			
10189336	11/18/21	CCA99	COMMONWEALTH CHARTER ACADEMY					\$127,980.60	20211105	CC	R
			TUITION THROUGH NOVEMBER 2021	1156210 / 10-1110.562.000.10.00		11/04/21	757443	34,725.30			
			TUITION THROUGH NOVEMBER 2021	1156230 / 10-1110.562.000.30.00		11/04/21	757443	41,670.43			
			TUITION THROUGH NOVEMBER 2021	124156230 / 10-1241.562.000.30.00		11/04/21	757443	38,688.66			
			TUITION THROUGH NOVEMBER 2021	124156210 / 10-1241.562.000.10.00		11/04/21	757443	12,896.21			
10189337	11/18/21	LPP99	LINCOLN PARK FOR THE PERFORMING ARTS CS					\$2,778.03	20211105	CC	R
			TUITION THROUGH OCTOBER 2021	1156230 / 10-1110.562.000.30.00		10/20/21	OCT2021	2,778.03			

Date: 12/03/21
 Time: 12:02:44

Shaler Area School District
SUPPLEMENT C.1A CHECK LIST NOVEMBER 30, 2021 2021-2022

Check Dates 07/12/02 - 12/03/21

Check # 00001000 - 99999999

Check	Date	Vendor#	Vendor Name	P.O.	F/P	Inv Date	Invoice #	Check Amount	Batch	Src	Stat
10-0101.002.000.00.00			Cash - PNC Bank								
10189337	11/18/21	LPP99	LINCOLN PARK FOR THE PERFORMING ARTS CS					\$2,778.03	20211105	CC	R
10189338	11/18/21	PCC99	PA CYBER CHARTER SCHOOL					\$85,541.07	20211105	CC	O
			TUITION THROUGH NOVEMBER 2021	1156230 / 10-1110.562.000.30.00		11/05/21	NOV21	43,059.42			
			TUITION THROUGH NOVEMBER 2021	124156230 / 10-1241.562.000.30.00		11/05/21	NOV21	36,412.85			
			TUITION THROUGH NOVEMBER 2021	124156210 / 10-1241.562.000.10.00		11/05/21	NOV21	6,068.80			
10189339	11/18/21	PRO66	PROVIDENT CHARTER SCHOOL					\$47,524.96	20211105	CC	O
			TUITION THROUGH NOVEMBER 2021	1156210 / 10-1110.562.000.10.00		11/01/21	NOV21	11,112.16			
			TUITION THROUGH NOVEMBER 2021	124156230 / 10-1241.562.000.30.00		11/01/21	NOV21	3,034.40			
			TUITION THROUGH NOVEMBER 2021	124156210 / 10-1241.562.000.10.00		11/01/21	NOV21	33,378.40			
10189340	11/18/21	UPK99	URBAN PATHWAYS K-5 COLLEGE CS					\$17,262.66	20211105	CC	O
			TUITION THROUGH NOVEMBER 2021	1156210 / 10-1110.562.000.10.00		11/09/21	NOV21	17,262.66			
10189341	11/18/21	PLC99	PA LEADERSHIP CHARTER SCHOOL					\$67,078.26	20211105	CC	O
			TUITION THROUGH NOVEMBER 2021	1156210 / 10-1110.562.000.10.00		11/01/21	756479	11,594.18			
			TUITION THROUGH NOVEMBER 2021	1156230 / 10-1110.562.000.30.00		11/01/21	756479	52,173.83			
			TUITION THROUGH NOVEMBER 2021	124156230 / 10-1241.562.000.30.00		11/01/21	756479	3,310.25			
10189342	11/19/21	PRO47	PROPEL SCHOOLS					\$8,155.58	20211105	CC	R
			RECONCILIATION FOR 2020-2021	1156210 / 10-1110.562.000.10.00		09/03/21	2020-2021	8,155.58			
10189343	11/24/21	CON90	CONSOLIDATED COMMUNICATIONS					\$3,138.34	20211101	CC	O
			11/16/21 - 12/15/21	262053801 / 10-2620.538.000.01.00		11/16/21	4124928577NOV21	275.26			
			11/16/21 - 12/15/21	262053811 / 10-2620.538.000.11.00		11/16/21	4124921325NOV21	137.98			
			FINAL PAYMENT	262053812 / 10-2620.538.000.12.00		11/16/21	4124868663NOV21	59.88			
			11/16/21 - 12/15/21	262053813 / 10-2620.538.000.13.00		11/16/21	4124868702NOV21	172.03			
			11/16/21 - 12/15/21	262053814 / 10-2620.538.000.14.00		11/16/21	4123214507NOV21	68.82			
			11/16/21 - 12/15/21	262053815 / 10-2620.538.000.15.00		11/16/21	4124921345NOV21	149.01			
			11/16/21 - 12/15/21	262053831 / 10-2620.538.000.31.00		11/16/21	4126841076NOV21	740.13			
			11/16/21 - 12/15/21	262053835 / 10-2620.538.000.35.00		11/16/21	4126840042NOV21	674.10			
			11/16/21 - 12/15/21	262053835 / 10-2620.538.000.35.00		11/16/21	4124877245NOV21	344.07			
			11/16/21 - 12/15/21	262053835 / 10-2620.538.000.35.00		11/16/21	4124878207NOV21	517.06			

Date: 12/03/21
 Time: 12:02:44

Shaler Area School District
SUPPLEMENT C.1A CHECK LIST NOVEMBER 30, 2021 2021-2022

Page: 6
 BAR055

Check Dates 07/12/02 - 12/03/21

Check # 00001000 - 99999999

Check	Date	Vendor#	Vendor Name	P.O.	F/P	Inv Date	Invoice #	Check Amount	Batch	Src	Stat
10-0101.002.000.00.00	Cash - PNC Bank										
10189343	11/24/21	CON90	CONSOLIDATED COMMUNICATIONS					\$3,138.34	20211101	CC	O
10189344	11/24/21	EMP01	EMPLOYER-TEAMSTERS 205					\$8,464.00	20211101	CC	O
		EMPLOYER VISION-P 215	DECEMBER 2021	047534 / 10-0475.034.000.00.00		11/23/21	DECEMBER2021	2,264.00			
		EMPLOYER DENTAL-P 215	DECEMBER 2021	047536 / 10-0475.036.000.00.00		11/23/21	DECEMBER2021	6,200.00			
10189345	11/24/21	A*9897	NADA/NORTHERN ATHLETIC DIR ASSOC					\$128.00	20211101	CC	O
		2021 NADA HOLIDAY LUNCHEON		3299810 / 10-3299.810.000.00.00		11/18/21	21NADA	128.00			
10189346	11/24/21	SHO54	SHOP 'N SAVE					\$271.65	20211101	CC	O
		WEEKLY SUPPLIES		116103109 / 10-1110.610.000.31.09		11/22/21	11222021	91.00			
		WEEKLY SUPPLIES		6103509 / 10-1110.610.000.35.09		11/22/21	11222021	16.94			
		WEEKLY SUPPLIES		121161030 / 10-1211.610.000.30.00		11/22/21	11222021	22.95			
		FOUNDATION FOOD		116103517 / 10-1110.610.000.35.17		11/16/21	11162021	104.37			
		FOUNDATION FOOD		116103517 / 10-1110.610.000.35.17		11/23/21	11232021	36.39			
10189347	11/24/21	TRI52	TRI-STAR MOTORS					\$47,743.00	20211101	CC	O
		Vehicle Oper & Maint		2650763 / 10-2650.763.000.00.00	20211553	F	11/23/21	C22F209	47,743.00		
10189348	11/24/21	UGI53	UGI ENERGY SERVICES, LLC					\$4,669.55	20211101	CC	O
		10/7/21 - 11/6/21		262062119 / 10-2620.621.000.19.00		11/15/21	G5149803	4,669.55			
10189349	11/30/21	ZZ31H	THE HARTFORD					\$7,018.70	20211198	CC	O
		EMPLOYEE - DISABILITY INSURANCE	HARTFORD	0101002 / 10-0101.002.000.00.00		11/05/21	PY-VD10H-20211105M	3,506.59			
		EMPLOYEE - DISABILITY INSURANCE	HARTFORD	0101002 / 10-0101.002.000.00.00		11/19/21	PY-VD10H-20211119M	3,512.11			
10189350	11/30/21	ZZ32	NATIONAL D.R.I.V.E.					\$8.00	20211198	CC	O
		EMPLOYEE - National D.R.I.V.E.		047031 / 10-0470.031.000.00.00		11/19/21	PY-VD23-20211119M	4.00			
		EMPLOYEE - National D.R.I.V.E.		047031 / 10-0470.031.000.00.00		11/05/21	PY-VD23-20211105M	4.00			
10189351	11/30/21	ZZ24	TUITION ACCOUNT PROG BUR					\$770.00	20211198	CC	O
		EMPLOYEE - TUITION-TAP 529		047060 / 10-0470.060.000.00.00		11/19/21	PY-VD18-20211119M	385.00			

Date: 12/03/21

Time: 12:02:44

Shaler Area School District
SUPPLEMENT C.1A CHECK LIST NOVEMBER 30, 2021 2021-2022

Page: 7

BAR055

Check Dates 07/12/02 - 12/03/21

Check # 00001000 - 99999999

Check	Date	Vendor#	Vendor Name	P.O.	F/P	Inv Date	Invoice #	Check Amount	Batch	Src	Stat
10-0101.002.000.00.00			Cash - PNC Bank								
10189351	11/30/21	ZZ24	TUITION ACCOUNT PROG BUR					\$770.00	20211198	CC	O
EMPLOYEE - TUITION-TAP 529			047060 / 10-0470.060.000.00.00			11/05/21	PY-VD18-20211105M	385.00			
99998909	11/05/21	ZZ02	PA DEPT OF REVENUE					\$45,577.26	1120	W	R
EMPLOYEE - State Tax - Pennsylvania			047014 / 10-0470.014.000.00.00			11/05/21	PY-ST-PA-20211105P	45,588.77			
VOID #D0409938 EMPLOYEE - State Tax - Pennsylvania			047014 / 10-0470.014.000.00.00			10/22/21	PY-ST-PA-20211022P-1	-11.51			
99998910	11/05/21	ZZ01	PNC BANK PAYROLL					\$380,368.88	1120	W	R
EMPLOYEE - Social Security			047011 / 10-0470.011.000.00.00			11/05/21	PY-SOSEC-20211105P	92,040.97			
VOID #D0409938 EMPLOYEE - Social Security			047011 / 10-0470.011.000.00.00			10/22/21	PY-SOSEC-20211022P-1	-23.25			
EMPLOYEE - Medicare			047011 / 10-0470.011.000.00.00			11/05/21	PY-MCARE-20211105P	21,532.17			
VOID #D0409938 EMPLOYEE - Medicare			047011 / 10-0470.011.000.00.00			10/22/21	PY-MCARE-20211022P-1	-5.44			
EMPLOYEE - Federal Income Tax			047012 / 10-0470.012.000.00.00			11/05/21	PY-FIT-20211105P	153,285.75			
VOID #D0409938 EMPLOYEE - Federal Income Tax			047012 / 10-0470.012.000.00.00			10/22/21	PY-FIT-20211022P-1	-5.77			
VOID #D0409938 EMPLOYER - Medicare			047529 / 10-0475.029.000.00.00			10/22/21	PY-MCARE-20211022P-1	-5.44			
EMPLOYER - Medicare			047529 / 10-0475.029.000.00.00			11/05/21	PY-MCARE-20211105P	21,532.17			
EMPLOYER - Social Security			047529 / 10-0475.029.000.00.00			11/05/21	PY-SOSEC-20211105P	92,040.97			
VOID #D0409938 EMPLOYER - Social Security			047529 / 10-0475.029.000.00.00			10/22/21	PY-SOSEC-20211022P-1	-23.25			
99998911	11/05/21	ZZ01	PNC BANK PAYROLL					\$2,597.37	1120	W	R
EMPLOYEE - NET PAY NOT DIRECT DEPOSITED			047070 / 10-0470.070.000.00.00			11/05/21	PY-NET-20211105P	2,597.37			
99998912	11/05/21	ZZ33	VOYA RETIREMENT SYSTEM					\$2,668.16	1120	W	R
EMPLOYEE - Ret. TG (DC) 2.75%			464002 / 10-0464.002.000.00.00			11/05/21	PY-RTGDC-20211105P	1,467.49			
EMPLOYER - Ret. TG (DC) 2.75%			475030 / 10-0475.030.000.00.00			11/05/21	PY-RTGDC-20211105P	1,200.67			
99998913	11/05/21	ZZDD	SHALER AREA SCHOOL DIST					\$949,373.22	1120	W	R
EMPLOYEE - Direct Deposit Fixed			047070 / 10-0470.070.000.00.00			11/05/21	PY-DDF-20211105P	13,980.00			
EMPLOYEE - Direct Deposit Net			047070 / 10-0470.070.000.00.00			11/05/21	PY-DDN-20211105P	935,718.27			
VOID #D0409938 EMPLOYEE - Direct Deposit Net			047070 / 10-0470.070.000.00.00			10/22/21	PY-DDN-20211022P-1	-325.05			

Date: 12/03/21

Time: 12:02:44

Check Dates 07/12/02 - 12/03/21

Shaler Area School District
SUPPLEMENT C.1A CHECK LIST NOVEMBER 30, 2021 2021-2022

Page: 8

BAR055

Check # 00001000 - 99999999

Table with columns: Check, Date, Vendor#, Vendor Name, P.O., F/P, Inv Date, Invoice #, Check Amount, Batch, Src, Stat. It lists multiple checks including 'Cash - PNC Bank' and 'PA DEPT OF REVENUE'.

Date: 12/03/21
 Time: 12:02:44

Shaler Area School District
SUPPLEMENT C.1A CHECK LIST NOVEMBER 30, 2021 2021-2022

Page: 9
 BAR055

Check Dates 07/12/02 - 12/03/21

Check # 00001000 - 99999999

Check	Date	Vendor#	Vendor Name	P.O.	F/P	Inv Date	Invoice #	Check Amount	Batch	Src	Stat
10-0101.002.000.00.00	Cash - PNC Bank										
99998918	11/19/21	ZZ01	PNC BANK PAYROLL					\$2,109.43	1120	W	R
			EMPLOYEE - NET PAY NOT DIRECT DEPOSITED	047070 / 10-0470.070.000.00.00		11/19/21	PY-NET-20211119P	2,109.43			
99998919	11/19/21	ZZ33	VOYA RETIREMENT SYSTEM					\$2,945.15	1120	W	R
			EMPLOYEE - Ret. TG (DC) 2.75%	464002 / 10-0464.002.000.00.00		11/19/21	PY-RTGDC-20211119P	1,619.85			
			EMPLOYER - Ret. TG (DC) 2.75%	475030 / 10-0475.030.000.00.00		11/19/21	PY-RTGDC-20211119P	1,325.30			
99998920	11/19/21	ZZDD	SHALER AREA SCHOOL DIST					\$1,052,401.96	1120	W	R
			EMPLOYEE - Direct Deposit Fixed	047070 / 10-0470.070.000.00.00		11/19/21	PY-DDF-20211119P	13,980.00			
			EMPLOYEE - Direct Deposit Net	047070 / 10-0470.070.000.00.00		11/19/21	PY-DDN-20211119P	1,038,421.96			
99998921	11/19/21	GAPA1	Great American Plan Administrators Inc					\$29,508.42	1120	W	R
			EMPLOYEE - T.S.A. - ING (AETNA)	04701 / 10-0470.001.000.00.00		11/19/21	PY-VD01I-20211119P	1,655.89			
			EMPLOYEE - T.S.A. - L FOR EQUITABLE-AXA	04701 / 10-0470.001.000.00.00		11/19/21	PY-VD01L-20211119P	4,943.00			
			EMPLOYEE - T.S.A. - E FOR AMERICAN FUNDS	04701 / 10-0470.001.000.00.00		11/19/21	PY-VD01E-20211119P	3,517.00			
			EMPLOYEE - T.S.A. - G FOR EMPLOYEE BENEFIT/GWN	04701 / 10-0470.001.000.00.00		11/19/21	PY-VD01G-20211119P	1,325.00			
			EMPLOYEE - T.S.A. - C FOR LINCOLN INVESTMENT	04701 / 10-0470.001.000.00.00		11/19/21	PY-VD01C-20211119P	6,430.77			
			EMPLOYEE - T.S.A. - M FOR LINCOLN FINANCIAL	04701 / 10-0470.001.000.00.00		11/19/21	PY-VD01M-20211119P	2,475.00			
			EMPLOYEE - ROTH - 4 FOR LINCOLN FINANCIAL	04701 / 10-0470.001.000.00.00		11/19/21	PY-VR04-20211119P	3,925.26			
			EMPLOYEE - ROTH - 6 FOR EQUITABLE-AXA	04701 / 10-0470.001.000.00.00		11/19/21	PY-VR06-20211119P	80.00			
			EMPLOYEE - ROTH - 5 FOR WAD & REED	04701 / 10-0470.001.000.00.00		11/19/21	PY-VR05-20211119P	50.00			
			EMPLOYEE - ROTH - 3 FOR LINCOLN INVESTMENTS	04701 / 10-0470.001.000.00.00		11/19/21	PY-VR03-20211119P	640.00			
			EMPLOYEE - T.S.A. - Q FOR FIDELITY INVESTMENT	04701 / 10-0470.001.000.00.00		11/19/21	PY-VD01Q-20211119P	1,769.00			
			EMPLOYEE - ROTH - 1 FOR EMPLOYEE BENEFIT	04701 / 10-0470.001.000.00.00		11/19/21	PY-VR01-20211119P	390.00			
			EMPLOYEE - T.S.A. - R FOR WADDELL AND REED	04701 / 10-0470.001.000.00.00		11/19/21	PY-VD01R-20211119P	2,207.50			
			EMPLOYEE - ROTH - 2 FOR FIDELITY	04701 / 10-0470.001.000.00.00		11/19/21	PY-VR02-20211119P	100.00			

Date: 12/03/21
 Time: 12:02:45

Shaler Area School District
SUPPLEMENT C.1A CHECK LIST NOVEMBER 30, 2021 2021-2022

Page: 10
 BAR055

Check Dates 07/12/02 - 12/03/21

Check # 00001000 - 99999999

Check	Date	Vendor#	Vendor Name	P.O.	F/P	Inv Date	Invoice #	Check Amount	Batch	Src	Stat
10-0101.002.000.00.00 Cash - PNC Bank											
99998922	11/30/21	ZZ13	PUBLIC SCHOOL EMPLOYEES' RETIREMENT					\$242,195.48	20211198	W	O
			EMPLOYEE - Retirement 6.25%	04709 / 10-0470.009.000.00.00		11/05/21	PY-RTC6-20211105M	235.19			
			EMPLOYEE - Retirement 6.25%	04709 / 10-0470.009.000.00.00		11/19/21	PY-RTC6-20211119M	235.19			
			EMPLOYEE - Retirement 7.50%	04709 / 10-0470.009.000.00.00		11/05/21	PY-RTD7-20211105M	99,002.56			
			EMPLOYEE - Retirement 6.50%	04709 / 10-0470.009.000.00.00		11/19/21	PY-RTD6-20211119M	154.50			
			EMPLOYEE - Retirement 6.50%	04709 / 10-0470.009.000.00.00		11/05/21	PY-RTD6-20211105M	141.28			
			VOID #D0411320 EMPLOYEE - Retirement 7.50%	04709 / 10-0470.009.000.00.00		11/19/21	PY-RTD7-20211119M	-277.33			
			EMPLOYEE - Retirement 10.8%	04709 / 10-0470.009.000.00.00		11/19/21	PY-RTF10-20211119M	4,251.09			
			EMPLOYEE - Retirement 8% (post 7/1/11)	04709 / 10-0470.009.000.00.00		11/19/21	PY-RTE7-20211119M	10,170.84			
			EMPLOYEE - Retirement 10.8%	04709 / 10-0470.009.000.00.00		11/05/21	PY-RTF10-20211105M	4,104.65			
			EMPLOYEE - Retirement 7.50%	04709 / 10-0470.009.000.00.00		11/24/21	PY-RTD7-20211124M	277.33			
			EMPLOYEE - Retirement 8% (post 7/1/11)	04709 / 10-0470.009.000.00.00		11/05/21	PY-RTE7-20211105M	7,316.54			
			EMPLOYEE - Retirement 7.50%	04709 / 10-0470.009.000.00.00		11/19/21	PY-RTD7-20211119M	109,566.99			
			EMPLOYEE - Ret. TG (DB) 6.25%	464001 / 10-0464.001.000.00.00		11/05/21	PY-RTGDB-20211105M	3,335.19			
			EMPLOYEE - Ret. TG (DB) 6.25%	464001 / 10-0464.001.000.00.00		11/19/21	PY-RTGDB-20211119M	3,681.46			
<hr/>											
99998923	11/30/21	ZZ14	PUBLIC SCHOOL EMPL RETIREMENT SYS					\$1,009.22	20211198	W	O
			EMPLOYEE - BUYBACK RETIREMENT	047024 / 10-0470.024.000.00.00		11/19/21	PY-VD12-20211119M	540.95			
			EMPLOYEE - BUYBACK RETIREMENT	047024 / 10-0470.024.000.00.00		11/05/21	PY-VD12-20211105M	468.27			

Totals For Bank Account 10-0101.002.000.00.00 Cash - PNC Bank

	Total	Count		Total	Count
Computer Check	608,494.72	47	Outstanding	538,871.38	18
Hand Check	0.00	0	Reconciled	3,304,451.98	43
Wire Transfer	3,234,828.64	14	Stop Payment	0.00	0
			Voids	0.00	0

Vendor#	Vendor Name	Description	Amount
0101	Cash		
	ZZ31H HARTFORD	EMPLOYEE - DISABILITY INSURANCE HARTFORD	\$3,512.11
		EMPLOYEE - DISABILITY INSURANCE HARTFORD	\$3,506.59
		Total for 0101 Cash	\$7,018.70
0464	Retirement Employee-Voya		
	ZZ13 COMMONWEALTHOPENNA	EMPLOYEE - Ret. TG (DB) 6.25%	\$3,681.46
		EMPLOYEE - Ret. TG (DB) 6.25%	\$3,335.19
	ZZ33 VOYARETIREMENTSYSM	EMPLOYEE - Ret. TG (DC) 2.75%	\$1,467.49
		EMPLOYEE - Ret. TG (DC) 2.75%	\$1,619.85
		Total for 0464 Retirement Employee-Voya	\$10,103.99
0470	Payroll Deductions & Withholdings		
	ZZ29 CHAPTER 13 TRUSTEE	EMPLOYEE - GARNISHMENT - E FOR CHAPTER 13	\$1,393.04
		EMPLOYEE - GARNISHMENT - E FOR CHAPTER 13	\$1,393.04
	ZZ13 COMMONWEALTHOPENNA	VOID #D0411320 EMPLOYEE - Retirement 7.50%	\$-277.33
		EMPLOYEE - Retirement 7.50%	\$99,002.56
		EMPLOYEE - Retirement 7.50%	\$277.33
		EMPLOYEE - Retirement 7.50%	\$109,566.99
		EMPLOYEE - Retirement 8% (post 7/1/11)	\$7,316.54
		EMPLOYEE - Retirement 8% (post 7/1/11)	\$10,170.84
		EMPLOYEE - Retirement 10.8%	\$4,104.65
		EMPLOYEE - Retirement 6.50%	\$141.28
		EMPLOYEE - Retirement 10.8%	\$4,251.09
		EMPLOYEE - Retirement 6.50%	\$154.50
		EMPLOYEE - Retirement 6.25%	\$235.19
		EMPLOYEE - Retirement 6.25%	\$235.19
	ZZ14	EMPLOYEE - BUYBACK RETIREMENT	\$540.95
		EMPLOYEE - BUYBACK RETIREMENT	\$468.27
	KEY53 KEYSTONE COLLECTIONS GROUP	EMPLOYEE - GARNISHMENT - NORTH ALLEGHENY SD	\$162.02
	ZZ32 NATIONALDRIVE	EMPLOYEE - National D.R.I.V.E.	\$4.00
		EMPLOYEE - National D.R.I.V.E.	\$4.00
	ZZ06 NORTHDISTRICTSCOMMUNITYCREDITUNION	EMPLOYEE - CREDIT UNION	\$44,886.22
		EMPLOYEE - CREDIT UNION	\$44,722.88
	ZZ02 PADEPTOFREVENUE	VOID #D0409938 EMPLOYEE - State Tax - Pennsylvania	\$-11.51
		EMPLOYEE - State Tax - Pennsylvania	\$45,588.77
		EMPLOYEE - State Tax - Pennsylvania	\$51,743.66
	ZZ01 PNCBANKPAYROLL	VOID #D0409938 EMPLOYEE - Medicare	\$-5.44
		EMPLOYEE - Medicare	\$21,532.17
		EMPLOYEE - Social Security	\$104,094.09
		EMPLOYEE - Medicare	\$24,433.26
		EMPLOYEE - Social Security	\$92,040.97
		VOID #D0409938 EMPLOYEE - Social Security	\$-23.25
		VOID #D0409938 EMPLOYEE - Federal Income Tax	\$-5.77
		EMPLOYEE - Federal Income Tax	\$153,285.75
		EMPLOYEE - Federal Income Tax	\$185,882.92
		EMPLOYEE - NET PAY NOT DIRECT DEPOSITED	\$2,109.43
		EMPLOYEE - NET PAY NOT DIRECT DEPOSITED	\$2,597.37
	ZZ24 Pennsylvania Tuition Acct. Prgm	EMPLOYEE - TUITION-TAP 529	\$385.00

Shaler Area School District
SUPPLEMENT C.1A CHECK LIST NOVEMBER 30, 2021 B 2021-2022

Vendor#	Vendor Name	Description	Amount
0470 Payroll Deductions & Withholdings			
	ZZ24 Pennsylvania Tuition Acct. Prgm	EMPLOYEE - TUITION-TAP 529	\$385.00
	ZZ15 SHALERAREAEDUCATION	EMPLOYEE - TEACHER DUES	\$35,882.67
	ZZDD SHALERAREASCHOOLDIST	VOID #D0409938 EMPLOYEE - Direct Deposit Net	\$-325.05
		EMPLOYEE - Direct Deposit Fixed	\$13,980.00
		EMPLOYEE - Direct Deposit Net	1,038,421.96
		EMPLOYEE - Direct Deposit Net	\$935,718.27
		EMPLOYEE - Direct Deposit Fixed	\$13,980.00
	ZZ16 TEAMSTERSLOCAL205	EMPLOYEE - CUSTODIAN DUES	\$3,245.00
	ZZ17	EMPLOYEE - CLERICAL DUES	\$4,928.00
	GAPA1 TSA CONSULTING GROUP INC	EMPLOYEE - ROTH - 1 FOR EMPLOYEE BENEFIT	\$390.00
		EMPLOYEE - T.S.A. - Q FOR FIDELITY INVESTMENT	\$1,604.00
		EMPLOYEE - T.S.A. - R FOR WADDELL AND REED	\$2,417.50
		EMPLOYEE - ROTH - 2 FOR FIDELITY	\$100.00
		EMPLOYEE - ROTH - 3 FOR LINCOLN INVESTMENTS	\$640.00
		EMPLOYEE - ROTH - 6 FOR EQUITABLE-AXA	\$80.00
		EMPLOYEE - ROTH - 4 FOR LINCOLN FINANCIAL	\$3,925.26
		EMPLOYEE - ROTH - 5 FOR WAD & REED	\$50.00
		EMPLOYEE - T.S.A. - M FOR LINCOLN FINANCIAL	\$2,475.00
		EMPLOYEE - T.S.A. - ING (AETNA)	\$1,644.01
		EMPLOYEE - T.S.A. - L FOR EQUITABLE-AXA	\$4,858.00
		EMPLOYEE - ROTH - 3 FOR LINCOLN INVESTMENTS	\$640.00
		EMPLOYEE - ROTH - 1 FOR EMPLOYEE BENEFIT	\$390.00
		EMPLOYEE - ROTH - 2 FOR FIDELITY	\$100.00
		EMPLOYEE - ROTH - 4 FOR LINCOLN FINANCIAL	\$3,921.53
		EMPLOYEE - ROTH - 5 FOR WAD & REED	\$50.00
		EMPLOYEE - T.S.A. - E FOR AMERICAN FUNDS	\$3,517.00
		EMPLOYEE - ROTH - 6 FOR EQUITABLE-AXA	\$80.00
		EMPLOYEE - T.S.A. - C FOR LINCOLN INVESTMENT	\$6,370.77
		EMPLOYEE - T.S.A. - C FOR LINCOLN INVESTMENT	\$6,430.77
		EMPLOYEE - T.S.A. - G FOR EMPLOYEE BENEFIT/GWN	\$1,325.00
		EMPLOYEE - T.S.A. - ING (AETNA)	\$1,655.89
		EMPLOYEE - T.S.A. - G FOR EMPLOYEE BENEFIT/GWN	\$1,325.00
		EMPLOYEE - T.S.A. - Q FOR FIDELITY INVESTMENT	\$1,769.00
		EMPLOYEE - T.S.A. - L FOR EQUITABLE-AXA	\$4,943.00
		EMPLOYEE - T.S.A. - E FOR AMERICAN FUNDS	\$3,517.00
		EMPLOYEE - T.S.A. - R FOR WADDELL AND REED	\$2,207.50
		EMPLOYEE - T.S.A. - M FOR LINCOLN FINANCIAL	\$2,475.00
		Total for 0470 Payroll Deductions & Withholdings	\$3,117,517.75
0475 Employer Paid Benefits			
	EMP01 EMPLOYERTEAMSTERS	EMPLOYER VISION-P 215 DECEMBER 2021	\$2,264.00
		EMPLOYER DENTAL-P 215 DECEMBER 2021	\$6,200.00
	ZZ01 PNCBANKPAYROLL	EMPLOYER - Social Security	\$92,040.97
		VOID #D0409938 EMPLOYER - Social Security	\$-23.25
		VOID #D0409938 EMPLOYER - Medicare	\$-5.44
		EMPLOYER - Social Security	\$104,094.09
		EMPLOYER - Medicare	\$24,433.26
		EMPLOYER - Medicare	\$21,532.17
	HAR02 THE HARTFORD	EMPLOYER LIFE INS - 213 - NOVEMBER 2021	\$7,995.96

Shaler Area School District
SUPPLEMENT C.1A CHECK LIST NOVEMBER 30, 2021 B 2021-2022

Vendor#	Vendor Name	Description	Amount
0475 Employer Paid Benefits			
	ZZ33 VOYARETIREMENTSYSTEM	EMPLOYER - Ret. TG (DC) 2.75%	\$1,325.30
		EMPLOYER - Ret. TG (DC) 2.75%	\$1,200.67
		Total for 0475 Employer Paid Benefits	\$261,057.73
330 Purch Other Prof Svc			
	UKI01 UKINTERNATIONALSOCCE	ASSISTANT SOCCER COACH	\$3,990.00
411 Disposal Services			
	ALL55 REPUBLIC SERVICES, INC.	MAINT -DISPOSAL SERVICES - BURCHFIELD	\$470.76
		MAINT - DISPOSAL SERVICES - MARZOLF	\$397.02
		MAINT - DISPOSAL SERVICES - RESERVE	\$455.60
		MAINT - DISPOSAL SERVICES - SCOTT	\$363.20
		MAINT - DISPOSAL SERVICES - HS	\$485.00
		MAINT - DISPOSAL SERVICES - HS	\$972.32
		MAINT - DISPOSAL SERVICES - MIDDLE SCHOOL	\$904.48
		MAINT - Disposal Services - ELEM SCHOOL	\$728.86
		Total for 411 Disposal Services	\$4,777.24
442 Rental-equip&vehicles			
	WEL05 WELLS FARGO FINANCIAL LEASING	10/17/21 - 11/16/21	\$186.00
538 Telecommunications			
	CON90 CONSOLIDATED COMMUNICATIONS	10/16/21 - 11/15/21	\$275.26
		11/16/21 - 12/15/21	\$275.26
		11/16/21 - 12/15/21	\$137.98
		10/16/21 - 11/15/21	\$137.83
		FINAL PAYMENT	\$59.88
		10/16/21 - 11/15/21	\$137.63
		11/16/21 - 12/15/21	\$172.03
		10/16/21 - 11/15/21	\$172.30
		11/16/21 - 12/15/21	\$68.82
		10/16/21 - 11/15/21	\$68.82
		11/16/21 - 12/15/21	\$149.01
		10/16/21 - 11/15/21	\$149.01
		11/16/21 - 12/15/21	\$740.13
		10/16/21 - 11/15/21	\$741.76
		11/16/21 - 12/15/21	\$517.06
		11/16/21 - 12/15/21	\$674.10
		11/16/21 - 12/15/21	\$344.07
		10/16/21 - 11/15/21	\$345.19
		10/16/21 - 11/15/21	\$522.07
		10/16/21 - 11/15/21	\$677.97
	SUN02 CROWN CASTLE FIBER LLC	TRANSPORT/TELECOMMUNICATIONS	\$2,496.40
		Total for 538 Telecommunications	\$8,862.58
562 Tuition Payments To Charter Schools			
	ACC99 AGORACYBERCHARTERSCHOOL	TUITION THROUGH NOVEMBER 2021	\$2,008.90
		TUITION THROUGH NOVEMBER 2021	\$3,803.52
	CCA99 COMMONWEALTHCHARTERACADEMY	TUITION THROUGH NOVEMBER 2021	\$34,725.30

Shaler Area School District
SUPPLEMENT C.1A CHECK LIST NOVEMBER 30, 2021 B 2021-2022

Check Dates 11/01/21 - 11/30/21

Check # 00001000 - 99999999

Vendor#	Vendor Name	Description	Amount
562 Tuition Payments To Charter Schools			
CCA99	COMMONWEALTHCHARTERACADEMY	TUITION THROUGH NOVEMBER 2021	\$41,670.43
		TUITION THROUGH NOVEMBER 2021	\$38,688.66
		TUITION THROUGH NOVEMBER 2021	\$12,896.21
LPP99	LINCOLN PARK PERFORMING ARTS CHART	TUITION THROUGH OCTOBER 2021	\$2,778.03
PCC99	PACYBERCHARTERSCHOOL	TUITION THROUGH NOVEMBER 2021	\$43,059.42
		TUITION THROUGH NOVEMBER 2021	\$36,412.85
		TUITION THROUGH NOVEMBER 2021	\$6,068.80
PLC99	PALEADERSHIPCHARTERSCHOOL	TUITION THROUGH NOVEMBER 2021	\$11,594.18
		TUITION THROUGH NOVEMBER 2021	\$52,173.83
		TUITION THROUGH NOVEMBER 2021	\$3,310.25
PRO47	PROPEL CS - HAZELWOOD	RECONCILIATION FOR 2020-2021	\$8,155.58
PRO66	PROVIDENT CHARTER SCHOOL	TUITION THROUGH NOVEMBER 2021	\$11,112.16
		TUITION THROUGH NOVEMBER 2021	\$3,034.40
		TUITION THROUGH NOVEMBER 2021	\$33,378.40
UPK99	URBANPATHWAYS5COLLEGECS	TUITION THROUGH NOVEMBER 2021	\$17,262.66
Total for 562 Tuition Payments To Charter Schools			\$362,133.58
581 Travel Conference			
JE31	ESKRAJUSTIN	Advance for meals for SC States in Hershey, PA	\$225.00
PS31	STADELMANPAUL	ADVANCE ON LUNCHESES - 34 @ \$10.00	\$340.00
Total for 581 Travel Conference			\$565.00
599 Misc Purchased Services			
WIL54	WILLIAMSGEORGE	BOYS & GIRLS SOCCER ASSIGNOR DUES	\$270.00
610 General Supplies			
FLU02	FLUENCYMATTERS	INSTRUCTIONAL - GEN SUP - HS WORLD LANGUAGES	\$108.00
SHO54	SHOPNSAVE	WEEKLY PURCHASES	\$217.66
		WEEKLY PURCHASES	\$262.60
		WEEKLY SUPPLIES	\$91.00
		WEEKLY PURCHASES	\$77.03
		WEEKLY SUPPLIES	\$16.94
		WEEKLY PURCHASES	\$58.81
		WEEKLY PURCHASES	\$239.96
		WEEKLY PURCHASES	\$160.17
		WEEKLY PURCHASES	\$65.23
		WEEKLY SUPPLIES	\$22.95
		FOUNDATION FOOD	\$104.37
		FOUNDATION FOOD	\$36.39
Total for 610 General Supplies			\$1,461.11
621 Natural Gas			
UGI53	UGI ENERGY SERVICES	NATURAL GAS - BURCHFIELD 9/22/21 - 10/20/21	\$1,043.54
		NATURAL GAS - MARZOLF 9/15/21 - 10/14/21	\$52.77
		NATURAL GAS - RESERVE 9/29/21 - 10/28/21	\$65.96
		NATURAL GAS - HIGH SCHOOL 9/15/21 - 10/14/21	\$4,692.02
		NATURAL GAS - MIDDLE SCHOOL 9/15/21 - 10/14/21	\$2,833.03

Shaler Area School District
SUPPLEMENT C.1A CHECK LIST NOVEMBER 30, 2021 B 2021-2022

Vendor#	Vendor Name	Description	Amount
621 Natural Gas			
UGI53	UGI ENERGY SERVICES	NATURAL GAS - ELEM SCHOOL 9/8/21 - 10/7/21	\$2,251.81
		10/7/21 - 11/6/21	\$4,669.55
Total for 621 Natural Gas			\$15,608.68
650 Supplies & Fees Technology Related			
APP14	APPLEINC	SOFTWARE SUPPLIES & LICENSING	\$570.00
TMO01	T-MOBILEUSAINC.	Instruction-Regular Program - Supplies & Fees Technology Rel	\$400.00
		Instruction-Regular Program - Supplies & Fees Technology Rel	\$400.00
Total for 650 Supplies & Fees Technology Related			\$1,370.00
763 Capital Vehicles			
TRI52	TRI-STAR MOTORS	Vehicle Oper & Maint	\$47,743.00
810 Dues & Fees			
A*9788	COMMONWEALTH OF PA	RENEWAL FOR PESTICIDE BUSINESS LICENSE 1/1/22 - 12/31/22	\$35.00
BET01	DISTRICT VII ATHLETIC DIRECTOR ASSO	2021 DISTRICT VII ATHLETIC DIRECTORS ASSOCIATION DUES	\$50.00
A*9897	NORTH ALLEGHENY ATHLETICS	2021 NADA HOLIDAY LUNCHEON	\$128.00
PEN78	PENNSYLVANIA BAR ASSOCIATION	STATE WIDE MOCK TRIAL TEAM PAYMENT	\$125.00
WPI52	WPIBL	Misc Athletics - DUES & FEES	\$320.00
Total for 810 Dues & Fees			\$658.00
Report Total			\$3,843,323.36

Account Number	Amount	Vendor	Invoice Number	Date
10-2540.442.000.00.00	\$ 6,895.00	ComDoc	COM05 5017126493	11/30/2021
10-2620.622.000.01.00	\$ 335.95	Duquesne Light/B&G	DUQ02 9497700000	Nov 21 11/30/2021
10-2620.622.000.31.00	\$ 108.12	Duquesne Light/High School	DUQ02 8270640000	Nov 21 11/30/2021
10-2620.622.000.19.00	\$ 31.58	Duquesne Light/Elementary School	DUQ02 7193100000	Nov 21 11/30/2021
10-2620.622.000.19.00	\$ 37.54	Duquesne Light/Elementary School	DUQ02 5142260000	Nov 21 11/30/2021
10-2620.622.000.19.00	\$ 12,221.44	Duquesne Light/Elementary School	DUQ02 8993100000	Nov 21 11/30/2021
10-2620.622.000.31.00	\$ 28,990.16	Duquesne Light/High School	DUQ02 X347850000	Nov 21 11/30/2021
10-2620.622.000.15.00	\$ 64.40	Duquesne Light/Scott	DUQ02 1741420000	Nov 21 11/30/2021
10-2620.622.000.15.00	\$ 6,643.76	Duquesne Light/Scott	DUQ02 5210913097	Nov 21 11/30/2021
10-2620.622.000.35.00	\$ 1,627.94	Duquesne Light/Middle School	DUQ02 5813230000	Nov 21 11/30/2021
10-2620.622.000.35.00	\$ 2,383.94	Duquesne Light/Middle School	DUQ02 1594070000	Nov 21 11/30/2021
10-2620.622.000.35.00	\$ 17,556.00	Duquesne Light/Middle School	DUQ02 X830740000	Nov 21 11/30/2021
10-2620.622.000.14.00	\$ 56.90	Duquesne Light/Reserve	DUQ02 1402760000	Nov 21 11/30/2021
10-2620.622.000.14.00	\$ 1,373.42	Duquesne Light/Reserve	DUQ02 2551500000	Nov 21 11/30/2021
10-2620.622.000.01.00	\$ 60.70	Duquesne Light/B&G	DUQ02 8967430000	Nov 21 11/30/2021
10-2620.622.000.31.00	\$ 127.22	Duquesne Light/High School	DUQ02 3287310000	Nov 21 11/30/2021
10-2620.622.000.11.00	\$ 2,907.11	Duquesne Light/Burchfield	DUQ02 6175200000	Nov 21 11/30/2021
10-2650.626.000.00.00	\$ 2,266.69	Fleet Services	FLE21	Nov-21 11/30/2021
10-2620.424.000.15.00	\$ 1,634.43	Hampton/Shaler Water	HAM55 0115512969	Nov 21 11/30/2021
10-2620.424.000.11.00	\$ 2,213.50	Hampton/Shaler Water	HAM55 0115515822	Nov 21 11/30/2021
10-2620.424.000.01.00	\$ 242.86	Hampton/Shaler Water	HAM55 0115515362	Nov 21 11/30/2021
10-2620.424.000.19.00	\$ 4,167.23	Hampton/Shaler Water	HAM55 0115511878	Nov 21 11/30/2021
10-2620.621.000.19.00	\$ 1,689.73	Peoples Natural Gas/ES	PEO02 200003959042	Nov 21 11/30/2021
10-2620.621.000.19.00	\$ 2,661.35	Peoples Natural Gas/ES	PEO02 200003959042A	Nov 21 11/30/2021
10-2620.621.000.31.00	\$ 3,146.41	Peoples Natural Gas/HS	PEO02 200003958978	Nov 21 11/30/2021
10-2620.621.000.11.00	\$ 749.16	Peoples Natural Gas/Burchfield	PEO02 200003959240	Nov 21 11/30/2021
10-2620.621.000.14.00	\$ 115.86	Peoples Natural Gas/Reserve	PEO02 200006921627	Nov 21 11/30/2021
10-2620.621.000.15.00	\$ 3,580.43	Peoples Natural Gas/Scott Primary	PEO02 210005233783	Nov 21 11/30/2021
10-2620.621.000.35.00	\$ 1,947.58	Peoples Natural Gas/Middle School	PEO02 200003958861	Nov 21 11/30/2021
10-2620.621.000.01.00	\$ 41.21	Peoples Natural Gas/B&G	PEO02 200003958929	Nov 21 11/30/2021
10-2620.621.000.13.00	\$ 154.80	Peoples Natural Gas/Marzolf	PEO02 200003959182	Nov 21 11/30/2021
10-2620.538.000.00.00	\$ 223.23	Verizonwireless	VER02 9886172341	11/30/2021
10-5240.930.000.00.00	\$ 3,745,000.00	BNY Mellon	BNY01 02982PIT	11/30/2021

Account Number	Amount	Vendor	Invoice Number	Invoice Number	Date
10-0475.033.000.00.00	\$ 695,440.36	Allegheny County School Health Con.	ACS01	December Benefits	11/30/2021
10-0475.036.000.00.00	\$ 41,876.19	Allegheny County School Health Con.	ACS01	December Benefits	11/30/2021
10-0475.034.000.00.00	\$ 6,177.34	Allegheny County School Health Con.	ACS01	December Benefits	11/30/2021
10-2360.530.000.00.37	\$ 50.00	Neopost	NEO01	Fee	11/30/2021
10-2310.610.000.00.00	\$ 102.11	PNC Bank Corporate Account	PNC06	Sam's Club	11/30/2021
10-3300.635.000.00.00	\$ 86.00	PNC Bank Corporate Account	PNC06	Card My Yard/Veteran's Day	11/30/2021
10-3300.635.000.00.00	\$ 286.86	PNC Bank Corporate Account	PNC06	Oriental Trading/Veteran's Day	11/30/2021
10-3300.860.122.00.00	\$ 303.52	PNC Bank Corporate Account	PNC06	Sam's Club/BP	11/30/2021
10-3300.860.122.00.00	\$ 593.28	PNC Bank Corporate Account	PNC06	Sam's Club/BP	11/30/2021
Total \$ 4,596,171.31					

Date: 12/01/21

Time: 08:56:48

Release Dates 08/31/07 - 03/10/22

**Shaler Area School District
Invoices Payable 2021-2022
Vendor # 01BB - rai21**

Page: 1

BAR046j

Invoice # #079 - WPS-416499

21-22 Year

Vendor #	Vendor Name	Description	Acct #	Amount
NUT01	THE NUTRITION GROUP	BUSINESS OFFICE EXPENSE	3100.572	\$1,252.62
		CLEANING	3100.572	\$1,360.46
		DAIRY	3100.571	\$14,676.90
		GROCERIES	3100.571	\$65,590.12
		LABOR COSTS	3100.572	\$96,328.14
		MANAGEMENT FEE	3100.572	\$1,241.24
		MANAGEMENT PAYROLL	3100.572	\$4,838.06
		OTHER	3100.572	\$5,271.85
		PAPER	3100.572	\$5,500.59
		SUPPORT SERVICE EXPENSE	3100.572	\$715.78
		UPPER MANAGEMENT EXPENSE	3100.572	\$268.42
		Total for THE NUTRITION GROUP		\$197,044.18
			Report Total	\$197,044.18

Date: 12/01/21
Time: 08:57:41

Shaler Area School District
Invoices Payable 2021-2022
Vendor # 01BB - rai21

Page: 1
BAR046j

Release Dates 08/31/07 - 03/10/22

Invoice # #079 - WPS-416499

21-22 Year

Vendor #	Vendor Name	Description	Acct #	Amount
HHS53	HHS DR	SAHS AIR CONDITIONING INSTALLATION PROGRESS BILLING	4600.330	\$1,034.64
			Report Total	\$1,034.64

Date: 12/01/21
Time: 08:58:26

Shaler Area School District
Invoices Payable 2021-2022
Vendor # 01BB - rai21

Page: 1
BAR046j

Release Dates 08/31/07 - 03/10/22

Invoice # #079 - WPS-416499

21-22 Year

Vendor #	Vendor Name	Description	Acct #	Amount
HUS54	HUSTLER TURF EQUIPMENT, INC	CATCHER, BAC-VAC	2630.762	\$2,597.00
		HYPER DRIVE KAWASAKI FX 1000 EFI (38.5HP)	2630.762	\$12,416.00
		KIT, CATCHER ADPTER 60"	2630.762	\$464.00
		Total for HUSTLER TURF		\$15,477.00
			Report Total	\$15,477.00

Date: 12/01/21
 Time: 08:59:45

**Shaler Area School District
 Transaction Detail
 Budget Transfers**

Page: 1
 BAR017

Transaction Detail Report For 2021-2022

Date Range 07/01/21-08/31/22

Account Number	Voucher#	Description / Vendor	Date	SRC	PO#	Invoice#	Check#	Amount
3265750 / 10-3265.750.000.00.00	NOV 20	BT REQUISITION 20211538 PER CR/SL	11/18/21	BT				-2,100.00
3267611 / 10-3267.611.000.00.00	NOV 20	BT REQUISITION 20211538 PER CR/SL	11/18/21	BT				-2,000.00
3295580 / 10-3295.580.000.00.00	NOV 20	BT REQUISITION 20211480 PER CR/SL	11/18/21	BT				-40.00
3295810 / 10-3295.810.000.00.00	NOV 20	BT REQUISITION 20211480 PER CR/SL	11/18/21	BT				40.00
3299430 / 10-3299.430.000.00.00	NOV 20	BT REQUISITION 20211480 PER CR/SL	11/18/21	BT				-2,000.00
3299610 / 10-3299.610.000.00.00	NOV 20	BT REQUISITION 20211538 PER CR/SL	11/18/21	BT				2,100.00
3299610 / 10-3299.610.000.00.00	NOV 20	BT REQUISITION 20211538 PER CR/SL	11/18/21	BT				2,000.00
3299810 / 10-3299.810.000.00.00	NOV 20	BT REQUISITION 20211568 PER CR/SL	11/18/21	BT				2,000.00
Totals For Fund 10 Fund 10				8		Transaction Lines Totaling		0.00
Total Debits		6,140.00		Total Credits		-6,140.00		

**Shaler Area School District
2021-2022
Expenditure Accounts - with Activity Only**

Ending Date: 11/30/21

FUNCTION BOARD SUPPLEMENT

	Adjusted Budget	YTD Expended	Current Expended	Current Encumbrances	Remaining Balance	%Us
ALL						
10 Fund 10						
1000 Instruction						
1100 Instruction-regular Prog						
100 Salaries	21,668,436.00	5,015,879.46	1,684,285.20	0.00	16,652,556.54	23
200 Benefits	14,354,030.00	3,975,033.89	1,076,786.11	0.00	10,378,996.11	28
300 Purchased Prof/tech Svc	21,000.00	3,575.14	0.00	19,370.00	-1,945.14	109
400 Purchased Property Svc	58,523.00	5,320.24	1,230.94	10,167.36	43,035.40	26
500 Other Purchased Services	1,203,000.00	556,895.68	238,599.82	0.00	646,104.32	46
600 Supplies	1,024,036.00	436,318.65	43,184.14	75,120.64	512,596.71	50
700 Property	116,010.00	23,184.45	13,584.47	5,812.54	87,013.01	25
800 Other Objects	0.00	2,311.20	1,733.40	0.00	-2,311.20	-999
1100 ** Functio Total	38,445,035.00	10,018,518.71	3,059,404.08	110,470.54	28,316,045.75	26
1200 Instruction-special Prog						
100 Salaries	6,489,564.00	1,585,956.95	510,959.15	0.00	4,903,607.05	24
200 Benefits	4,405,818.00	1,338,653.19	350,701.20	0.00	3,067,164.81	30
300 Purchased Prof/tech Svc	531,740.00	47,318.16	28,122.85	0.00	484,421.84	9
500 Other Purchased Services	2,799,200.00	738,902.55	263,429.19	0.00	2,060,297.45	26
600 Supplies	130,500.00	27,124.01	9,303.62	4,605.38	98,770.61	24
700 Property	15,000.00	3,873.09	3,578.09	138.00	10,988.91	27
800 Other Objects	204,300.00	175.00	125.00	1,518.00	202,607.00	1
1200 ** Functio Total	14,576,122.00	3,742,002.95	1,166,219.10	6,261.38	10,827,857.67	26
1300 Vocational Education						
100 Salaries	0.00	17,617.20	5,872.40	0.00	-17,617.20	-999
200 Benefits	0.00	7,714.61	2,566.83	0.00	-7,714.61	-999
500 Other Purchased Services	1,500,000.00	1,083,046.09	0.00	0.00	416,953.91	72
1300 ** Functio Total	1,500,000.00	1,108,377.90	8,439.23	0.00	391,622.10	74
1400 Other Instruct Prog						
100 Salaries	1,095,495.00	264,042.43	84,966.56	0.00	831,452.57	24
200 Benefits	643,956.00	210,654.60	54,473.50	0.00	433,301.40	33
500 Other Purchased Services	220,000.00	0.00	0.00	0.00	220,000.00	0
600 Supplies	15,000.00	0.00	0.00	0.00	15,000.00	0
1400 ** Functio Total	1,974,451.00	474,697.03	139,440.06	0.00	1,499,753.97	24
1500 Non-public School Programs						
300 Purchased Prof/tech Svc	16,000.00	1,059.00	0.00	0.00	14,941.00	7

**Shaler Area School District
2021-2022
Expenditure Accounts - with Activity Only**

Ending Date: 11/30/21

FUNCTION BOARD SUPPLEMENT

	Adjusted Budget	YTD Expended	Current Expended	Current Encumbrances	Remaining Balance	%Us
ALL						
10 Fund 10						
1500 ** Functio Total	16,000.00	1,059.00	0.00	0.00	14,941.00	7
1000 ** Function (E) Total	56,511,608.00	15,344,655.59	4,373,502.47	116,731.92	41,050,220.49	27
2000 Support Services						
2100 Pupil Personnel						
100 Salaries	2,245,511.00	684,551.21	187,105.51	0.00	1,560,959.79	30
200 Benefits	1,462,801.00	495,077.12	123,155.49	0.00	967,723.88	34
300 Purchased Prof/tech Svc	30,000.00	29,270.00	21,970.00	0.00	730.00	98
400 Purchased Property Svc	0.00	242.00	0.00	0.00	-242.00	-999
500 Other Purchased Services	7,800.00	27.55	0.00	0.00	7,772.45	0
600 Supplies	42,000.00	2,068.32	698.89	3,451.72	36,479.96	13
800 Other Objects	2,500.00	1,115.00	0.00	0.00	1,385.00	45
2100 ** Functio Total	3,790,612.00	1,212,351.20	332,929.89	3,451.72	2,574,809.08	32
2200 Instructional Staff Svc						
100 Salaries	907,400.00	238,567.78	65,425.52	0.00	668,832.22	26
200 Benefits	443,179.00	148,619.41	37,363.59	0.00	294,559.59	34
300 Purchased Prof/tech Svc	8,600.00	1,029.00	0.00	0.00	7,571.00	12
400 Purchased Property Svc	1,500.00	0.00	0.00	0.00	1,500.00	0
500 Other Purchased Services	7,500.00	0.00	0.00	0.00	7,500.00	0
600 Supplies	149,100.00	79,558.36	30,363.80	37,470.46	32,071.18	78
700 Property	6,200.00	2,988.35	140.35	0.00	3,211.65	48
800 Other Objects	116.00	0.00	0.00	0.00	116.00	0
2200 ** Functio Total	1,523,595.00	470,762.90	133,293.26	37,470.46	1,015,361.64	33
2300 Administration						
100 Salaries	2,199,456.00	925,437.88	175,872.87	0.00	1,274,018.12	42
200 Benefits	1,448,198.00	587,788.94	113,674.32	0.00	860,409.06	41
300 Purchased Prof/tech Svc	357,500.00	124,842.49	31,517.37	0.00	232,657.51	35
400 Purchased Property Svc	50,000.00	18,723.45	3,744.69	0.00	31,276.55	37
500 Other Purchased Services	114,600.00	22,075.69	50.00	0.00	92,524.31	19
600 Supplies	24,740.00	20,720.22	4,311.78	508.69	3,511.09	86
700 Property	14,300.00	3,090.10	126.60	61.98	11,147.92	22
800 Other Objects	28,900.00	36,491.58	239.00	0.00	-7,591.58	126
2300 ** Functio Total	4,237,694.00	1,739,170.35	329,536.63	570.67	2,497,952.98	41

**Shaler Area School District
 2021-2022
 Expenditure Accounts - with Activity Only**

Ending Date: 11/30/21

FUNCTION BOARD SUPPLEMENT

	Adjusted Budget	YTD Expended	Current Expended	Current Encumbrances	Remaining Balance	%Us
ALL						
10 Fund 10						
2000 Support Services						
2400 Pupil Health						
100 Salaries	510,839.00	125,672.02	44,465.24	0.00	385,166.98	25
200 Benefits	314,983.00	127,018.57	25,913.80	0.00	187,964.43	40
300 Purchased Prof/tech Svc	36,000.00	10,160.00	4,615.50	0.00	25,840.00	28
400 Purchased Property Svc	2,000.00	554.00	0.00	0.00	1,446.00	28
600 Supplies	6,000.00	4,162.25	381.98	1,875.71	-37.96	101
700 Property	2,000.00	0.00	0.00	0.00	2,000.00	0
2400 ** Functio Total	871,822.00	267,566.84	75,376.52	1,875.71	602,379.45	31
2500 Business						
100 Salaries	415,865.00	144,704.88	26,913.58	0.00	271,160.12	35
200 Benefits	259,344.00	100,942.50	19,292.32	0.00	158,401.50	39
300 Purchased Prof/tech Svc	56,000.00	35,938.00	14,848.00	0.00	20,062.00	64
400 Purchased Property Svc	100,068.00	26,597.49	8,309.64	0.00	73,470.51	27
500 Other Purchased Services	8,000.00	1,475.51	0.00	0.00	6,524.49	18
600 Supplies	2,500.00	18,287.65	504.00	9,496.00	-25,283.65	1111
800 Other Objects	2,500.00	1,410.00	0.00	0.00	1,090.00	56
2500 ** Functio Total	844,277.00	329,356.03	69,867.54	9,496.00	505,424.97	40
2600 Oper & Maint Of Plant						
100 Salaries	3,123,309.00	1,114,136.91	224,877.62	0.00	2,009,172.09	36
200 Benefits	1,902,638.00	765,957.88	152,814.35	0.00	1,136,680.12	40
300 Purchased Prof/tech Svc	319,851.00	106,832.78	10,006.02	0.00	213,018.22	33
400 Purchased Property Svc	590,031.00	223,274.31	48,533.92	144,477.72	222,278.97	62
500 Other Purchased Services	251,430.00	197,650.02	10,625.33	21,194.00	32,585.98	87
600 Supplies	1,798,435.00	531,924.29	127,593.37	32,403.04	1,234,107.67	31
700 Property	20,000.00	56,564.15	47,743.00	7,243.36	-43,807.51	319
800 Other Objects	1,624.00	346.00	35.00	0.00	1,278.00	21
2600 ** Functio Total	8,007,318.00	2,996,686.34	622,228.61	205,318.12	4,805,313.54	40
2700 Student Transportation						
100 Salaries	37,688.00	15,611.63	3,357.61	0.00	22,076.37	41
200 Benefits	23,456.00	10,417.83	2,174.57	0.00	13,038.17	44
300 Purchased Prof/tech Svc	69,000.00	3,339.12	0.00	0.00	65,660.88	5
500 Other Purchased Services	4,897,000.00	518,068.39	0.00	0.00	4,378,931.61	11

**Shaler Area School District
2021-2022**

Expenditure Accounts - with Activity Only

Ending Date: 11/30/21

FUNCTION BOARD SUPPLEMENT

	Adjusted Budget	YTD Expended	Current Expended	Current Encumbrances	Remaining Balance	%Us
ALL						
10 Fund 10						
2000 Support Services						
2700 Student Transportation						
600 Supplies	29,000.00	14,168.64	14,168.64	0.00	14,831.36	49
2700 ** Functio Total	5,056,144.00	561,605.61	19,700.82	0.00	4,494,538.39	11
2800 Central						
100 Salaries	676,566.00	296,666.32	53,614.60	0.00	379,899.68	44
200 Benefits	445,369.00	194,707.71	35,718.86	0.00	250,661.29	44
300 Purchased Prof/tech Svc	59,100.00	35,003.07	6,343.00	279.00	23,817.93	60
500 Other Purchased Services	15,100.00	0.00	0.00	0.00	15,100.00	0
600 Supplies	167,564.00	139,131.33	3,830.84	1,417.25	27,015.42	84
700 Property	0.00	19,250.43	0.00	0.00	-19,250.43	-999
800 Other Objects	1,620.00	0.00	0.00	0.00	1,620.00	0
2800 ** Functio Total	1,365,319.00	684,758.86	99,507.30	1,696.25	678,863.89	50
2900 Other Support Services						
500 Other Purchased Services	70,000.00	0.00	0.00	0.00	70,000.00	0
2900 ** Functio Total	70,000.00	0.00	0.00	0.00	70,000.00	0
2000 ** Function (E) Total	25,766,781.00	8,262,258.13	1,682,440.57	259,878.93	17,244,643.94	33
3000 Oper Of Non-instr Svc						
3200 Student Activities/ath						
100 Salaries	1,020,805.00	321,060.00	166,672.18	0.00	699,745.00	31
200 Benefits	170,804.00	162,362.05	75,832.46	0.00	8,441.95	95
300 Purchased Prof/tech Svc	51,840.00	21,934.00	4,705.52	0.00	29,906.00	42
400 Purchased Property Svc	26,150.00	8,557.50	0.00	2,418.20	15,174.30	42
500 Other Purchased Services	246,445.00	77,209.03	26,129.26	5,835.00	163,400.97	34
600 Supplies	108,860.00	32,903.31	5,515.37	46,563.13	29,393.56	73
700 Property	66,160.00	2,310.65	733.98	55,701.45	8,147.90	88
800 Other Objects	21,715.00	10,193.00	2,133.00	1,500.00	10,022.00	54
3200 ** Functio Total	1,712,779.00	636,529.54	281,721.77	112,017.78	964,231.68	44
3300 Community Services						
100 Salaries	55,000.00	6,877.32	1,856.03	0.00	48,122.68	13
200 Benefits	16,642.00	2,597.64	553.60	0.00	14,044.36	16
600 Supplies	17,500.00	19,203.39	10,029.56	340.80	-2,044.19	112
800 Other Objects	30,000.00	3,074.96	896.80	0.00	26,925.04	10

**Shaler Area School District
 2021-2022
 Expenditure Accounts - with Activity Only**

Ending Date: 11/30/21

	Adjusted Budget	YTD Expended	Current Expended	Current Encumbrances	FUNCTION BOARD SUPPLEMENT Remaining Balance	%Us
ALL						
10 Fund 10						
3300 ** Functio Total	119,142.00	31,753.31	13,335.99	340.80	87,047.89	27
3000 ** Function (E) Total	1,831,921.00	668,282.85	295,057.76	112,358.58	1,051,279.57	43
4000 Facility Acq & Impr Svc						
4600 Building Impr Svc-repl						
400 Purchased Property Svc	10,000.00	0.00	0.00	0.00	10,000.00	0
4600 ** Functio Total	10,000.00	0.00	0.00	0.00	10,000.00	0
4000 ** Function (E) Total	10,000.00	0.00	0.00	0.00	10,000.00	0
5000 Other Financing Uses						
5100 See 5102 And 5110						
800 Other Objects	32,800.00	23,562.29	0.00	0.00	9,237.71	72
900 Other Financing Uses	182,054.00	175,000.66	0.00	568.81	6,484.53	96
5100 ** Functio Total	214,854.00	198,562.95	0.00	568.81	15,722.24	93
5200 Fund Transfers						
900 Other Financing Uses	7,657,373.00	6,150,270.88	3,745,000.00	0.00	1,507,102.12	80
5200 ** Functio Total	7,657,373.00	6,150,270.88	3,745,000.00	0.00	1,507,102.12	80
5000 ** Function (E) Total	7,872,227.00	6,348,833.83	3,745,000.00	568.81	1,522,824.36	81
10 Fund (E) Total	91,992,537.00	30,624,030.40	10,096,000.80	489,538.24	60,878,968.36	34
Report Totals	91,992,537.00	30,624,030.40	10,096,000.80	489,538.24	60,878,968.36	34

**Shaler Area School District
 2021-2022
 Expenditure Accounts - with Activity Only**

Ending Date: 11/30/21

OBJECT SUPPLEMENT

	Adjusted Budget	YTD Expended	Current Expended	Current Encumbrances	Remaining Balance	%Us
ALL						
10 Fund 10						
100 Salaries						
111 Sal-adminstration-reg	2,543,327.00	1,062,580.45	193,246.49	0.00	1,480,746.55	42
120 Sal-professional-educ	59,374.00	25,241.92	4,589.44	0.00	34,132.08	43
121 Sal-prof-regular	29,220,093.00	6,701,387.36	2,239,839.87	0.00	22,518,705.64	23
122 Sal-prof-substitute	658,000.00	237,779.34	88,602.97	0.00	420,220.66	36
123 Sal-prof-extra Duty	493,000.00	119,332.22	29,436.25	0.00	373,667.78	24
131 Sal-other Professional	259,427.00	110,559.99	19,920.00	0.00	148,867.01	43
132 Sal-coach/sponsor/other	863,028.00	254,684.26	154,873.72	0.00	608,343.74	30
141 Sal-technical Support	135,502.00	62,325.90	11,331.98	0.00	73,176.10	46
151 Sal-clerical-regular	3,182,371.00	1,080,784.48	265,716.58	0.00	2,101,586.52	34
152 Sal-clerical-sub	72,000.00	29,795.68	7,705.30	0.00	42,204.32	41
153 Sal-clerical-overtime	69,000.00	21,544.70	1,731.21	0.00	47,455.30	31
161 Sal-foremen-regular	180,353.00	42,250.99	7,682.00	0.00	138,102.01	23
171 Sal-maint-regular	602,096.00	216,842.30	45,056.80	0.00	385,253.70	36
173 Sal-maintenance-overtime	50,000.00	6,526.13	2,022.36	0.00	43,473.87	13
182 Sal-summer Subs	70,000.00	9,194.75	0.00	0.00	60,805.25	13
191 Sal-custodial-regular	1,954,363.00	751,491.24	142,506.73	0.00	1,202,871.76	38
192 Sal-custodial-sub	70,000.00	1,866.00	1,002.00	0.00	68,134.00	3
193 Sal-custodial-overtime	118,000.00	63,768.83	20,980.37	0.00	54,231.17	54
100 Object (E) Total	40,599,934.00	10,797,956.54	3,236,244.07	0.00	29,801,977.46	27
200 Benefits						
211 Medical Insurance	7,500,000.00	3,043,860.77	610,421.16	0.00	4,456,139.23	41
212 Dental Insurance	443,435.00	185,554.12	37,239.78	0.00	257,880.88	42
213 Life Insurance	0.00	26,135.81	5,198.69	0.00	-26,135.81	-999
215 Eye Care Insurance	87,496.00	35,830.26	7,177.52	0.00	51,665.74	41
219 Other Health Benefits	157,000.00	39,700.00	11,700.00	0.00	117,300.00	25
220 Social Security	3,101,687.00	808,645.23	242,100.49	0.00	2,293,041.77	26
230 Retirement	14,166,400.00	3,763,989.06	1,124,732.89	0.00	10,402,410.94	27
240 Tuition Reimbursement	15,000.00	3,702.00	0.00	0.00	11,298.00	25
250 Unemployment Comp	90,000.00	5,094.80	0.00	0.00	84,905.20	6
260 Workers Compensation	267,200.00	112,725.56	32,450.47	0.00	154,474.44	42
280 Other Post Employment Benefits	33,000.00	116,100.00	0.00	0.00	-83,100.00	352
281 RETIREE REIMBURSEMENT	30,000.00	6,873.36	0.00	0.00	23,126.64	23
200 Object (E) Total	25,891,218.00	8,148,210.97	2,071,021.00	0.00	17,743,007.03	31

**Shaler Area School District
2021-2022**

Expenditure Accounts - with Activity Only

Ending Date: 11/30/21

OBJECT SUPPLEMENT

	Adjusted Budget	YTD Expended	Current Expended	Current Encumbrances	Remaining Balance	%Us
ALL						
10 Fund 10						
300 Purchased Prof/tech Svc						
320 Purch Prof/educ Svc	6,000.00	1,059.00	0.00	0.00	4,941.00	18
322 Prof Education Serv-iu	423,500.00	33,037.16	21,837.85	19,370.00	371,092.84	12
323 Professional Educational Services - Other	394,500.00	121,336.14	5,400.50	0.00	273,163.86	31
324 Conference Training	0.00	1,056.00	1,056.00	0.00	-1,056.00	-999
329 Professional Educational Services - Other	5,000.00	0.00	0.00	0.00	5,000.00	0
330 Purch Other Prof Svc	386,500.00	151,689.79	49,429.00	279.00	234,531.21	39
332 Deliquent	120,000.00	13,496.26	4,556.26	0.00	106,503.74	11
333 Tax Appeal-legal	85,000.00	78,955.28	23,627.11	0.00	6,044.72	93
334 Litigation - MISC	1,000.00	0.00	0.00	0.00	1,000.00	0
335 Tax Billing Costs	5,000.00	2,428.35	0.00	0.00	2,571.65	49
340 Purch Technical Svc	23,000.00	5,500.00	5,500.00	0.00	17,500.00	24
348 Purch Svc In Support Of Technology	19,600.00	0.00	0.00	0.00	19,600.00	0
350 Security/safety Services	325,316.00	105,317.34	10,721.54	0.00	219,998.66	32
360 EMPLOYEE TRAINING/ DEVELOPMENT	65,600.00	15,618.41	0.00	6,500.00	43,481.59	34
390 Purch Other Prof Svc	4,375.00	2,659.44	0.00	0.00	1,715.56	61
300 Object (E) Total	1,864,391.00	532,153.17	122,128.26	26,149.00	1,306,088.83	30
400 Purchased Property Svc						
410 Cleaning Services	5,000.00	849.00	0.00	1,841.20	2,309.80	54
411 Disposal Services	59,315.00	19,108.64	4,777.24	46,909.34	-6,702.98	111
424 Water & Sewage	135,750.00	53,801.64	8,258.02	0.00	81,948.36	40
430 Repairs/maintenance	44,194.00	10,556.70	636.94	8,813.00	24,824.30	44
431 Preventive Maintenance	301,270.00	152,320.36	47,522.38	79,723.99	69,225.65	77
432 Repairs & Maintenance Svc	37,240.00	14,835.47	5,740.04	6,532.02	15,872.51	57
433 Repairs & Maintenance Srvcs Vehi	40,000.00	12,798.34	1,453.24	10,229.23	16,972.43	58
434 MAINT. REPAIRS KITCHEN	15,000.00	0.00	0.00	0.00	15,000.00	0
438 Maint&repair Infor Tech Eq/infra	44,179.00	9,468.04	594.00	1,931.36	32,779.60	26
442 Rental-equip&vehicles	164,364.00	49,798.80	15,065.33	1,083.14	113,482.06	31
450 Construction Services	10,000.00	0.00	0.00	0.00	10,000.00	0
400 Object (E) Total	856,312.00	323,536.99	84,047.19	157,063.28	375,711.73	56
500 Other Purchased Services						
510 Student Transport Svc	157,930.00	22,711.63	12,637.33	1,675.00	133,543.37	15
513 Stdnt Tran Svcc-cont	4,897,000.00	604,462.54	0.00	0.00	4,292,537.46	12
521 Blanket Insurance	165,000.00	150,389.00	0.00	0.00	14,611.00	91

**Shaler Area School District
 2021-2022**

Expenditure Accounts - with Activity Only

Ending Date: 11/30/21

OBJECT SUPPLEMENT

	Adjusted Budget	YTD Expended	Current Expended	Current Encumbrances	Remaining Balance	%Us
ALL						
10 Fund 10						
500 Other Purchased Services						
522 Auto Liability Ins	8,000.00	6,671.00	0.00	0.00	1,329.00	83
523 General Prop/liab Ins	10,000.00	10,596.00	0.00	0.00	-596.00	106
524 Insurance Deductibles	25,000.00	0.00	0.00	0.00	25,000.00	0
525 Bonding Insurance	12,500.00	0.00	0.00	0.00	12,500.00	0
529 Athletic Insurance	35,000.00	28,319.00	0.00	0.00	6,681.00	81
530 Communications	35,000.00	10,050.00	50.00	0.00	24,950.00	29
538 Telecommunications	75,280.00	40,044.64	10,475.70	21,194.00	14,041.36	81
549 ADVERTISING	8,000.00	1,453.50	0.00	0.00	6,546.50	18
561 Tuition/lea W/i State	170,000.00	63,475.00	0.00	0.00	106,525.00	37
562 Tuition Payments To Charter Schools	2,625,000.00	1,075,523.67	393,726.35	0.00	1,549,476.33	41
563 Tuition/private Sch	100,000.00	139,607.71	77,408.81	0.00	-39,607.71	140
564 Tuition To Avts	1,500,000.00	1,083,046.09	0.00	0.00	416,953.91	72
566 Tuition To Comm. Coll. & Tech Ins	20,000.00	0.00	0.00	0.00	20,000.00	0
567 Tuition To Appr Priv Sch (APS)	1,175,000.00	51,266.25	21,645.75	0.00	1,123,733.75	4
568 Tuition-PA Priv Res Reh Inst (PRRi)	110,000.00	0.00	0.00	0.00	110,000.00	0
569 Tuition - Other	50,000.00	29,321.25	9,168.75	0.00	20,678.75	59
571 Food Costs	2,025.00	828.65	0.00	0.00	1,196.35	41
580 Travel	15,130.00	0.00	0.00	0.00	15,130.00	0
581 Travel Conference	46,550.00	1,977.72	565.00	3,800.00	40,772.28	12
582 Travel Teachers Inter District	3,400.00	106.90	79.35	0.00	3,293.10	3
583 Travel w/students	5,330.00	0.00	0.00	0.00	5,330.00	0
584 Travel Inter-District	23,030.00	775.78	251.23	0.00	22,254.22	3
591 Security/police Svc	15,100.00	11,280.63	7,901.78	0.00	3,819.37	75
595 lu Payments/withheld	70,000.00	0.00	0.00	0.00	70,000.00	0
599 Misc Purchased Services	60,800.00	13,312.70	4,923.55	360.00	47,127.30	22
500 Object (E) Total	11,420,075.00	3,345,219.66	538,833.60	27,029.00	8,047,826.34	30
600 Supplies						
610 General Supplies	957,304.00	328,170.10	83,380.17	124,976.27	504,157.63	47
611 Uniforms	46,011.00	13,078.63	1,456.23	22,200.84	10,731.53	77
617 Supplies	50,000.00	21,371.40	0.00	0.00	28,628.60	43
618 DO NOT USE CHANGED TO 650	0.00	10,800.00	0.00	0.00	-10,800.00	-999
621 Natural Gas	361,000.00	78,737.89	29,695.21	0.00	282,262.11	22
622 Electricity	989,000.00	364,161.66	74,606.73	0.00	624,838.34	37
626 Gasoline	56,000.00	23,764.79	16,435.33	0.00	32,235.21	42
635 Meals / Refreshments	0.00	489.94	489.94	0.00	-489.94	-999

**Shaler Area School District
2021-2022**

Expenditure Accounts - with Activity Only

Ending Date: 11/30/21

OBJECT SUPPLEMENT

	Adjusted Budget	YTD Expended	Current Expended	Current Encumbrances	Remaining Balance	%Us
ALL						
10 Fund 10						
600 Supplies						
640 Books	703,800.00	256,067.89	47,509.48	95,006.03	352,726.08	50
648 Books&periodicals On Elec Media	44,000.00	23,375.79	4,094.50	9,749.99	10,874.22	75
650 Supplies & Fees Technology Related	463,345.00	497,096.37	48,827.26	103,114.33	-136,865.70	130
600 Object (E) Total	3,670,460.00	1,617,114.46	306,494.85	355,047.46	1,698,298.08	54
700 Property						
750 Equip-original & Addl	44,770.00	13,003.72	4,312.07	3,138.00	28,628.28	36
752 Capital Equipment - Original And Additional	10,700.00	19,545.43	0.00	0.00	-8,845.43	183
754 Capital Equipment - Food Service	5,000.00	0.00	0.00	0.00	5,000.00	0
758 Capital New Hardware Software	271,021.00	145,006.18	45,433.71	706,447.56	-580,432.74	314
760 Equipment-replacement	32,900.00	0.00	0.00	1,663.43	31,236.57	5
762 Capital Equipment Replacement	48,500.00	14,396.25	126.60	58,343.36	-24,239.61	150
763 Capital Vehicles	0.00	47,743.00	47,743.00	0.00	-47,743.00	-999
764 Capital Equipment Food Service	5,000.00	0.00	0.00	0.00	5,000.00	0
768 Capital Eq Harware Software Replace	79,200.00	2,848.00	0.00	0.00	76,352.00	4
700 Object (E) Total	497,091.00	242,542.58	97,615.38	769,592.35	-515,043.93	204
800 Other Objects						
810 Dues & Fees	63,275.00	52,391.78	4,265.40	3,018.00	7,865.22	88
820 Judgements Against The Lea	220,000.00	0.00	0.00	0.00	220,000.00	0
831 Interest-loan/lease Agr	7,800.00	7,397.23	0.00	0.00	402.77	95
860 Grants-community Svc	10,000.00	3,074.96	896.80	0.00	6,925.04	31
880 Refund/prior Yr Recpt	25,000.00	16,165.06	0.00	0.00	8,834.94	65
800 Object (E) Total	326,075.00	79,029.03	5,162.20	3,018.00	244,027.97	25
900 Other Financing Uses						
911 Lease Pmts/principle	182,054.00	175,000.66	0.00	568.81	6,484.53	96
930 Fund Transfers	7,657,373.00	6,147,488.28	3,745,000.00	0.00	1,509,884.72	80
939 Other Fund Transfers	0.00	2,782.60	0.00	0.00	-2,782.60	-999
900 Object (E) Total	7,839,427.00	6,325,271.54	3,745,000.00	568.81	1,513,586.65	81
10 Fund (E) Total	92,964,983.00	31,411,034.94	10,206,546.55	1,338,467.90	60,215,480.16	35
Report Totals	92,964,983.00	31,411,034.94	10,206,546.55	1,338,467.90	60,215,480.16	35

**Shaler Area School District
 2021-2022
 Revenue Accounts - with Activity Only**

Ending Date: 11/30/21

	Anticipated Revenue	Adjustments	YTD Revenue Received	Current Revenue Received	Revenues Board Supplement Remaining Balance	%Us
ALL						
10 Fund 10						
6000 Revenue - Local Sources						
6111 Cur Real Estate Tax						
001 Etna	2,557,295.00	0.00	2,330,943.80	81,372.31	226,351.20	91
002 Millvale	2,227,550.00	0.00	1,566,048.46	81,375.51	661,501.54	70
003 Reserve	3,361,100.00	0.00	3,127,696.42	67,977.53	233,403.58	93
004 Shaler	38,424,996.00	0.00	37,083,153.81	1,006,830.59	1,341,842.19	96
6111 Function (R) Total	46,570,941.00	0.00	44,107,842.49	1,237,555.94	2,463,098.51	94
6113 Public Utility Realty Tx						
000 TO BE DISTRIBUTED	52,000.00	0.00	53,269.77	0.00	-1,269.77	102
6113 Function (R) Total	52,000.00	0.00	53,269.77	0.00	-1,269.77	102
6143 Cur Act 511 Opt Tax						
001 Etna	6,000.00	0.00	4,468.11	1.13	1,531.89	74
002 Millvale	3,500.00	0.00	1,473.80	49.18	2,026.20	42
003 Reserve	1,300.00	0.00	330.39	0.00	969.61	25
004 Shaler	14,000.00	0.00	7,586.55	5,404.36	6,413.45	54
6143 Function (R) Total	24,800.00	0.00	13,858.85	5,454.67	10,941.15	55
6151 Cur Earned Income Tax						
001 Etna	452,000.00	0.00	142,696.86	41,035.72	309,303.14	31
002 Millvale	423,000.00	0.00	103,566.92	11,450.72	319,433.08	24
003 Reserve	546,000.00	0.00	135,901.14	14,618.49	410,098.86	24
004 Shaler	4,494,000.00	0.00	1,862,509.40	514,132.39	2,631,490.60	41
6151 Function (R) Total	5,915,000.00	0.00	2,244,674.32	581,237.32	3,670,325.68	37
6153 Real Estate Transfers						
000 TO BE DISTRIBUTED	600,000.00	0.00	308,043.50	55,638.86	291,956.50	51
6153 Function (R) Total	600,000.00	0.00	308,043.50	55,638.86	291,956.50	51
6411 Del Real Estate Tax						
001 Etna	100,000.00	0.00	92,328.50	7,453.84	7,671.50	92
002 Millvale	150,000.00	0.00	236,114.42	35,863.10	-86,114.42	157
003 Reserve	100,000.00	0.00	265,238.56	3,651.64	-165,238.56	265
004 Shaler	900,000.00	0.00	601,759.90	172,348.58	298,240.10	66
6411 Function (R) Total	1,250,000.00	0.00	1,195,441.38	219,317.16	54,558.62	95

**Shaler Area School District
2021-2022
Revenue Accounts - with Activity Only**

Ending Date: 11/30/21

	Anticipated Revenue	Adjustments	YTD Revenue Received	Revenues Board Supplement		
				Current Revenue Received	Remaining Balance	%Us
ALL						
10 Fund 10						
6000 Revenue - Local Sources						
6510 Earnings On Investments						
000 TO BE DISTRIBUTED	50,000.00	0.00	760.18	134.35	49,239.82	1
6510 Function (R) Total	50,000.00	0.00	760.18	134.35	49,239.82	1
6710 Admission-student Events						
000 TO BE DISTRIBUTED	25,000.00	0.00	15,609.00	3,666.00	9,391.00	62
6710 Function (R) Total	25,000.00	0.00	15,609.00	3,666.00	9,391.00	62
6740 Athletic Physicals						
000 TO BE DISTRIBUTED	1,500.00	0.00	310.00	310.00	1,190.00	20
6740 Function (R) Total	1,500.00	0.00	310.00	310.00	1,190.00	20
6830 Revenue From I.u.s-federal Funds						
000 TO BE DISTRIBUTED	0.00	0.00	4,760.00	0.00	-4,760.00	-999
6830 Function (R) Total	0.00	0.00	4,760.00	0.00	-4,760.00	-999
6832 IDEA Federal Pass Through Funds						
000 TO BE DISTRIBUTED	800,000.00	0.00	241,873.79	0.00	558,126.21	30
6832 Function (R) Total	800,000.00	0.00	241,873.79	0.00	558,126.21	30
6910 Rentals						
005 Athletic Fields	5,000.00	0.00	0.00	0.00	5,000.00	0
006 Classrooms	25,000.00	0.00	10,420.00	2,884.00	14,580.00	41
007 Gymnasiums	10,000.00	0.00	0.00	0.00	10,000.00	0
008 Swimming Pool	0.00	0.00	385.00	385.00	-385.00	-999
6910 Function (R) Total	40,000.00	0.00	10,805.00	3,269.00	29,195.00	27
6920 Contrib. & Donations From Prvt. Src						
000 TO BE DISTRIBUTED	0.00	0.00	30,054.20	4,679.00	-30,054.20	-999
6920 Function (R) Total	0.00	0.00	30,054.20	4,679.00	-30,054.20	-999
6942 Summer School Tuition						
000 TO BE DISTRIBUTED	15,000.00	0.00	0.00	0.00	15,000.00	0
6942 Function (R) Total	15,000.00	0.00	0.00	0.00	15,000.00	0

**Shaler Area School District
 2021-2022
 Revenue Accounts - with Activity Only**

Ending Date: 11/30/21

	Anticipated Revenue	Adjustments	YTD Revenue Received	Current Revenue Received	Revenues Board Supplement Remaining Balance	%Us
ALL						
10 Fund 10						
6000 Revenue - Local Sources						
6980 Rev From Community Act						
000 TO BE DISTRIBUTED	40,000.00	0.00	0.00	0.00	40,000.00	0
095 Fitness Program	4,000.00	0.00	0.00	0.00	4,000.00	0
6980 Function (R) Total	44,000.00	0.00	0.00	0.00	44,000.00	0
6991 Refunds						
000 TO BE DISTRIBUTED	90,000.00	0.00	94,860.51	8,125.08	-4,860.51	105
6991 Function (R) Total	90,000.00	0.00	94,860.51	8,125.08	-4,860.51	105
6999 All Other Revenues Not Specified Above						
000 TO BE DISTRIBUTED	0.00	0.00	-212.24	8.76	212.24	-999
6999 Function (R) Total	0.00	0.00	-212.24	8.76	212.24	-999
6000 Function (R) Total	55,478,241.00	0.00	48,321,950.75	2,119,396.14	7,156,290.25	87
7000 Revenue - State Sources						
7111 BASIC EDUCATION FUNDING-FORMULA						
000 TO BE DISTRIBUTED	11,943,233.00	0.00	3,297,864.00	0.00	8,645,369.00	27
7111 Function (R) Total	11,943,233.00	0.00	3,297,864.00	0.00	8,645,369.00	27
7112 BASIC EDUCATION FUNDING - SS						
000 TO BE DISTRIBUTED	1,581,861.00	0.00	688,959.63	308,233.44	892,901.37	43
7112 Function (R) Total	1,581,861.00	0.00	688,959.63	308,233.44	892,901.37	43
7271 Sp Ed-reg Progrm						
000 TO BE DISTRIBUTED	4,000,000.00	0.00	1,681,746.00	560,582.00	2,318,254.00	42
7271 Function (R) Total	4,000,000.00	0.00	1,681,746.00	560,582.00	2,318,254.00	42
7311 TRANSPORTATION						
000 TO BE DISTRIBUTED	1,350,000.00	0.00	133,185.00	0.00	1,216,815.00	9
7311 Function (R) Total	1,350,000.00	0.00	133,185.00	0.00	1,216,815.00	9
7312 TRANSPORTATION SUB						
000 TO BE DISTRIBUTED	110,000.00	0.00	0.00	0.00	110,000.00	0
7312 Function (R) Total	110,000.00	0.00	0.00	0.00	110,000.00	0

**Shaler Area School District
2021-2022
Revenue Accounts - with Activity Only**

Ending Date: 11/30/21

Revenues Board Supplement

	Anticipated Revenue	Adjustments	YTD Revenue Received	Current Revenue Received	Remaining Balance	%Us
ALL						
10 Fund 10						
7000 Revenue - State Sources						
7320 Subsidy/rental & Sf Pmt						
000 TO BE DISTRIBUTED	150,000.00	0.00	0.00	0.00	150,000.00	0
7320 Function (R) Total	150,000.00	0.00	0.00	0.00	150,000.00	0
7330 Subs/medical & Dental						
000 TO BE DISTRIBUTED	80,000.00	0.00	0.00	0.00	80,000.00	0
7330 Function (R) Total	80,000.00	0.00	0.00	0.00	80,000.00	0
7340 Property Tax Relief Pmt						
000 TO BE DISTRIBUTED	2,039,384.00	0.00	2,039,384.39	0.00	-0.39	100
7340 Function (R) Total	2,039,384.00	0.00	2,039,384.39	0.00	-0.39	100
7361 Safe Schools Grant						
000 TO BE DISTRIBUTED	0.00	0.00	45,000.00	0.00	-45,000.00	-999
7361 Function (R) Total	0.00	0.00	45,000.00	0.00	-45,000.00	-999
7505 READY TO LEARN GRANT						
000 TO BE DISTRIBUTED	706,471.00	0.00	706,471.00	706,471.00	0.00	100
7505 Function (R) Total	706,471.00	0.00	706,471.00	706,471.00	0.00	100
7820 Retirement Subsidy						
000 TO BE DISTRIBUTED	7,224,864.00	0.00	1,757,585.06	0.00	5,467,278.94	24
7820 Function (R) Total	7,224,864.00	0.00	1,757,585.06	0.00	5,467,278.94	24
7000 Function (R) Total	29,185,813.00	0.00	10,350,195.08	1,575,286.44	18,835,617.92	35
8000 Revenue - Federal Source						
8514 Nclb-title I-improving Academic Ach						
000 TO BE DISTRIBUTED	570,000.00	0.00	40,535.29	0.00	529,464.71	7
8514 Function (R) Total	570,000.00	0.00	40,535.29	0.00	529,464.71	7
8515 Nclb-title Ii-preparing Teachers						
000 TO BE DISTRIBUTED	120,000.00	0.00	0.00	0.00	120,000.00	0
8515 Function (R) Total	120,000.00	0.00	0.00	0.00	120,000.00	0

**Shaler Area School District
 2021-2022
 Revenue Accounts - with Activity Only**

Ending Date: 11/30/21

	Anticipated Revenue	Adjustments	YTD Revenue Received	Current Revenue Received	Revenues Board Supplement Remaining Balance	%Us
ALL						
10 Fund 10						
8000 Revenue - Federal Source						
8517 Nclb-title Iv-21st Century Sch						
000 TO BE DISTRIBUTED	35,000.00	0.00	0.00	0.00	35,000.00	0
8517 Function (R) Total	35,000.00	0.00	0.00	0.00	35,000.00	0
8810 Medical Assistance-access						
000 TO BE DISTRIBUTED	600,000.00	0.00	23,797.52	0.00	576,202.48	3
8810 Function (R) Total	600,000.00	0.00	23,797.52	0.00	576,202.48	3
8000 Function (R) Total	1,325,000.00	0.00	64,332.81	0.00	1,260,667.19	4
9000 Other Financing Sources						
9400 Sale/Compensation - Loss of Assets						
000 TO BE DISTRIBUTED	120,000.00	0.00	119,774.07	0.00	225.93	99
9400 Function (R) Total	120,000.00	0.00	119,774.07	0.00	225.93	99
9999 Fund Balance						
000 TO BE DISTRIBUTED	5,885,483.00	0.00	0.00	0.00	5,885,483.00	0
9999 Function (R) Total	5,885,483.00	0.00	0.00	0.00	5,885,483.00	0
9000 Function (R) Total	6,005,483.00	0.00	119,774.07	0.00	5,885,708.93	1
10 Fund (R) Total	91,994,537.00	0.00	58,856,252.71	3,694,682.58	33,138,284.29	63
Report Totals	91,994,537.00	0.00	58,856,252.71	3,694,682.58	33,138,284.29	63

**SHALER AREA SCHOOL DISTRICT
FUND PROFILES & INVESTMENTS
Nov-21**

GENERAL FUND

Beginning Balance November 1, 2021		\$44,020,533.98
Receipts	\$3,815,468.61	
Disbursements	\$9,041,341.06	
Ending Balance November 30, 2021		\$38,794,661.53

SUMMARY OF INVESTMENTS - GENERAL FUND

<i>Financial Institution</i>	<i>Investment Type</i>	<i>Interest Rate</i>	<i>Maturity</i>	<i>Amount</i>
PSDLAF	MAX	0.005%	LIQUID	\$12,060,621.09
PSDLAF	MAX	0.005%	LIQUID	\$2,444.41
PSDLAF	MAX	0.005%	LIQUID	\$86,854.93
PSDLAF	FLEX	0.020%	LIQUID	\$5,321,297.45
PSDLAF	FLEX	0.020%	LIQUID	\$11,810,510.74
PSDLAF	FLEX	0.020%	LIQUID	\$500,081.76
PSDLAF	CD	0.030%	3/1/2022	\$248,000.00
PSDLAF	CD	0.030%	4/4/2022	\$248,000.00
PSDLAF	CD	0.030%	5/9/2022	\$248,000.00
PSDLAF	COL	0.050%	LIQUID	\$2,000,000.00
PSDLAF	CD	0.040%	5/18/2022	\$248,000.00
PSDLAF	CD	0.040%	6/20/2022	\$248,000.00
PSDLAF	CD	0.041%	6/20/2022	\$248,000.00
PSDLAF	CD	0.039%	6/27/2022	\$248,000.00
PSDLAF	CD	0.100%	9/14/2022	\$248,000.00
PSDLAF	CD	0.070%	9/14/2022	\$248,000.00
PSDLAF	CD	0.050%	9/14/2022	\$248,000.00
PSDLAF	CD	0.050%	5/12/2022	\$249,248.19
PSDLAF	COL	0.050%	LIQUID	\$1,000,000.00
PLGIT	Reserve	0.070%	LIQUID	\$2,978,947.57
PLGIT	CD	0.450%	2/1/2022	\$248,000.00
PLGIT	CD	1.750%	2/2/2022	\$248,000.00
PLGIT	CLASS	0.010%	LIQUID	\$8,294.06
Total				\$38,994,300.20

FUND PROFILES & INVESTMENTS

Nov-21

Page 2

FUND FOR CONSTRUCTION, RENOVATION & REPAIR (CR&R)

Beginning Balance November 1, 2021			\$339,306.58
Receipts	\$1.49		
Disbursements	\$0.00		
Ending Balance November 30, 2021			\$339,308.07

Financial Institution	Investment Type	Interest Rate	Maturity	Amount
PSDLAF	MAX	0.005%	LIQUID	\$339,308.07
TOTAL				\$339,308.07

CAFETERIA FUND

Beginning Balance November 1, 2021			\$187,866.94
Receipts	\$356,621.63		
Disbursements	\$225,600.41		
Ending Balance November 30, 2021			\$318,888.16

Financial Institution	Investment Type	Interest Rate	Maturity	Amount
PSDLAF	MAX	0.01%	LIQUID	\$318,888.16
Total				\$318,888.16

FUND PROFILES & INVESTMENTS

Nov-21

Page 3

BOND FUND

Beginning Balance November 1, 2021		\$1,053,176.64
Receipts	\$4.19	
Disbursements	\$0.00	
Ending Balance November 30, 2021		\$1,053,180.83

SUMMARY OF INVESTMENTS - BOND FUND

Financial Institution	Investment Type	Interest Rate	Maturity	Amount
PSDLAF	FLEX	0.005%	LIQUID	\$1,053,180.83
Total				\$1,053,180.83

2019 BOND FUND

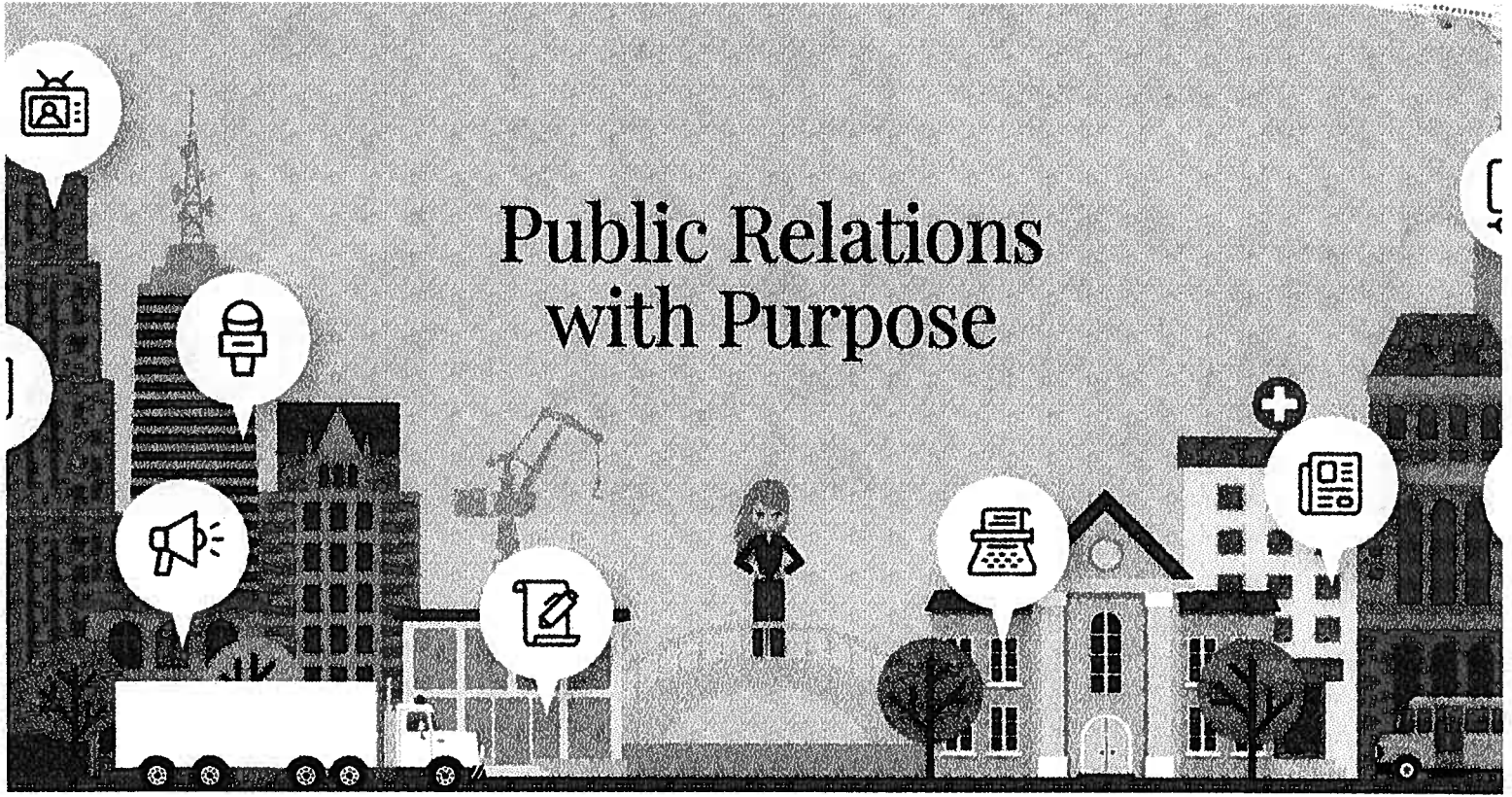
Beginning Balance November 1, 2021		\$3,199,408.18
Receipts	\$50.12	
Disbursements	\$0.00	
Ending Balance November 30, 2021		\$3,199,458.30

SUMMARY OF INVESTMENTS - BOND FUND

Financial Institution	Investment Type	Interest Rate	Maturity	Amount
PSDLAF	FLEX	0.01%	LIQUID	\$199,095.88
PSDLAF	FLEX	0.02%	LIQUID	\$3,000,362.42
Total				\$3,199,458.30

Supplement C.2 – Cafeteria Operating Statement October

	<u>Oct</u> <u>2020</u>	<u>YTD</u> <u>2020</u>	<u>Oct</u> <u>2020</u>	<u>YTD</u> <u>2020</u>	<u>Change</u> <u>From 2020</u>
Operating Income:					
Breakfast Sales		-		-	-
Lunch Sales		-	21.60	21.60	(21.60)
Ala Carte Sales	23,993.55	55,496.86	3,327.05	3,327.05	52,169.81
Special Function Sales	2,255.10	2,255.10	386.30	386.30	1,868.80
Other Income		-		-	-
Total Operating Income	26,248.65	57,751.96	3,734.95	3,734.95	54,017.01
Operating Expenses:					
Salaries & Benefits	126,328.14	257,791.30	56,030.63	82,376.72	175,414.58
Management Fee	1,241.24	4,964.96	1,224.10	4,896.40	68.56
Business Office Exp	1,252.62	5,010.48	1,235.32	4,941.28	69.20
Upper Management Expense	268.42	1,073.68	264.71	1,058.84	14.84
Support Service Expense	715.78	2,863.12	705.90	2,823.60	39.52
Management Payroll	4,838.06	19,352.24	4,739.53	18,958.12	394.12
Food	80,267.02	203,614.73	35,209.32	41,017.86	162,596.87
Inventory Adjustment	(16,415.93)	(51,179.93)	(10,501.59)	(12,080.23)	(39,099.70)
Paper & Cleaning	10,772.44	31,030.49	4,200.09	4,576.04	26,454.45
Other	1,725.13	5,613.66	1,725.13	7,752.28	(2,138.62)
Total Operating Expenses	210,992.92	480,134.73	94,833.14	156,320.91	323,813.82
Adjustment/Credits	(364.66)	(731.90)			(731.90)
Net Operating Income (Loss)	(184,379.61)	(421,650.87)	(91,098.19)	(152,585.96)	(269,064.91)
Non-Operating Income:					
Federal & State Subsidy	280,242.82	620,868.99	74,712.51	97,970.71	522,898.28
Actual Net Income (Loss)	95,863.21	199,218.12	(16,385.68)	(54,615.25)	253,833.37
Guarantee	-				
Breakfast Serving Days					
Breakfasts Served Days	20	46.00	31	49	(3)
Breakfasts Served	14,989	31,312.00	6,616	10,336	20,976
Average Brk/ Day	749	681	213	211	470
Lunch Serving Days					
Lunches Served Days	20	47.00	31	49	(2)
Lunches Served	54,439	122,026.00	16,047	20,069	101,957
Average Lunches per Day	2,722	2,596	518	410	2,187
Ala Carte Sales Days	20	47.00	31	49	(2)
Ala Carte Sales	23,993.55	49,817.30	3,327.05	3,327.05	46,490
Average Ala Carte per Day	1,200	1,060	107	68	992



**Proposal for Shaler Area School District
12.3.21**

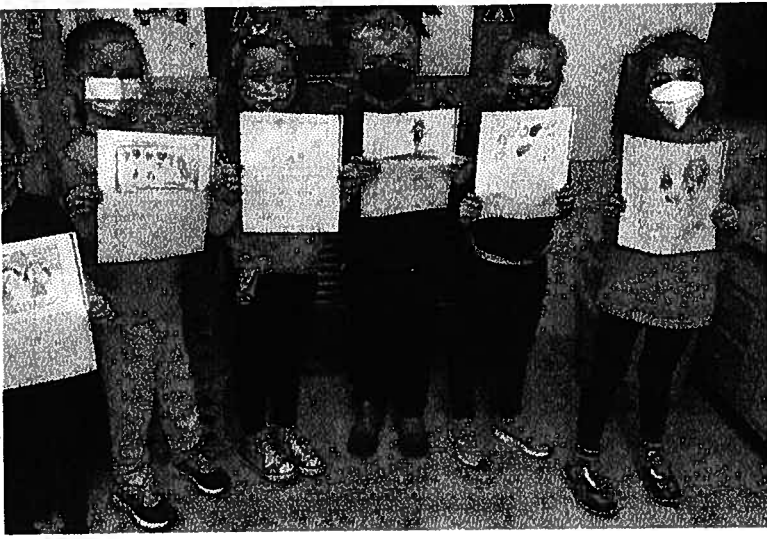
Carrie On Communication

412-897-6177

carrielynnbutler@gmail.com

<https://www.carrieoncommunication.com/>





PROGRAM OBJECTIVES

Serve the Shaler Area School District with communications and public relations services on an interim basis during an upcoming personnel leave of absence. Services to include the following as expressed priorities:

1. Crisis & Emergency Communications
2. Maintaining Active Social Media Program
3. Media Relations Program
4. Event Promotion
5. Misc. Communications Support & Consultation



PROGRAM APPROACH

In order to maintain the District's robust and vibrant communications program, a preliminary approach would include the following activities. This approach can be modified, adapted as needed to maximize effectiveness. These ideas are offered to illustrate that we will be highly pro-active in our approach to ensure a flow of timely, quality content; seeking out media moments in advance to maximize opportunity for coverage and being available for timely, effective emergency response. (in other words, we won't sit and hope to wait for great content to appear...we will seek it out from key stakeholders).

- Study existing social media program to maintain cadence and quality of existing program.
- Careful analysis of planned events, arts, athletics and academic calendar to schedule posts and drive social media program content- minimum of five per week to be utilized across all District social media properties and website.
- Assistance with crafting an Introductory email to all staff to be distributed by Dr Aiken and/or Dr. O'Black to extend my contact information and encourage engagement.
- Planning training/priority discover visit with Ms. Bethany Baker.
- Planning early January school building tours/meet building principals.
- Working with Dr. Aiken and Dr. O'Black – identify individuals for a core “go-to team” that I can connect with routinely to engage for content, updates....can/should include a dozen or so key individuals to include, but not limited to – principals, admin, several teachers, athletic director, arts leaders, PTA parents.
- Leverage extremely strong and active relationships with Pittsburgh media (and national as relevant) to draw publicity and shine a light on initiatives of distinction and leverage media moments naturally occurring within the District.
- Maintain active connectivity with Dr. Aiken, Dr. O'Black and any designees to respond to administrative communications needs and emergency/crisis correspondence.

PROGRAM TIMELINE

Program and services will support the District during the planned upcoming personnel leave to begin January 4, 2022 and extend through March 31, 2022. The terms of proposal are outlined to serve this definitive time period; however, additional services and length of term can be adjusted to meet the needs of the District on an evolving basis as needed.

PROGRAM INVESTMENT

Program inclusions & fees

\$3500 – per month is based on an estimated 8-10 hours of service per week – primarily focused on media relations services, social media content production and event promotion with a floating 5 hours of time built into monthly fee for emergency communications, crisis support and miscellaneous unplanned needs as they emerge. Assumed inclusions:

- conducting appropriate outreach and maintaining connectivity with key professional and teaching staff to ensure social media content – minimum of five posts per week and media relations program remains active and vibrant.
- coordinating development of media outreach narratives
- connecting broadly and routinely with all community and Pittsburgh media, national if/when relevant
- coordinating development of social media content.
- a planned December learning session on campus with Bethany prior to departure for leave.
- two visits to District schools in January to tour and engage in campus culture, establish connections.
- ongoing availability for crisis and emergency communications support, consultation and implementation.

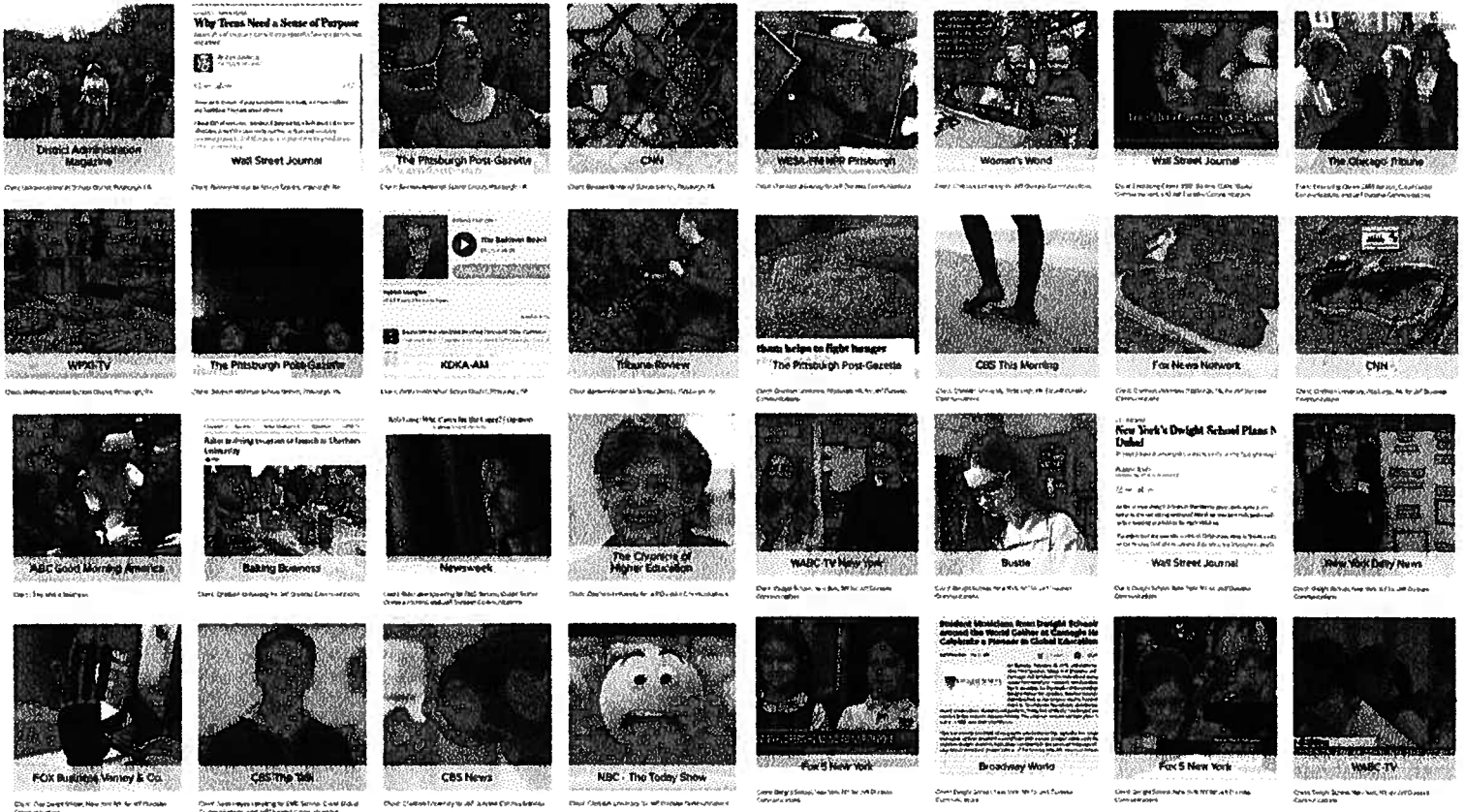
ABOUT CARRIE ON COMMUNICATION

Established in 2010, **Carrie On Communication** is a boutique PR and communications agency staffed entirely by experienced media specialists. Trusted by clients across diverse industries for her empathetic sense of strategic purpose, **Carrie Butler** and her team are celebrated for their creativity, reliability, and outstanding track record for achieving success with top-tier media.

What sets us apart? It may sound simple, but our secret is that *we care*.

Shedding light on the amazing stories and inspiring insights that set your organization apart does more than just attract attention. It also gives everyone from your own internal team to editors, journalists, readers, and viewers at home a reason to appreciate, care about, and cheer for the good work that your organization is striving to do every day.

A snapshot of **recent results** for a variety of clients in the media relations realm:
<https://www.carrieoncommunication.com/media-gallery2>





MURIN & MURN, INC.

234 Oak Way
Glassport, PA 15045
Phone: (412) 896-0031
Fax: (412) 896-0033

To:
PROPOSAL

Shaler Area School District

Proposal Number:
Proposal Date: 12/6/2021
Project Name: Shaler Area
Middle School

Description

We hereby submit a proposal for: Exploratory Digging for Detention tank

Site work

- Exploratory digging for Detention tank: 1 Day \$1,900
- It will be an additional \$1,500 per day for each extra day

***Does not included any permits.**

***Quote is based on line items above. Any other work will be extra.**

***All materials will remain on site**

***Any material imported or exported will be billed as Time and Material**

Total \$1,900

All material is guaranteed to be as specified. All work to be completed in a professional manner according to standard practices. Any alteration or deviation from above specifications involving extra costs will be executed only upon written orders, and will become an extra charge over and above the estimate. Note: All payments are due within 30 days upon receipt of invoice.

Date of Acceptance: _____

Acceptance Signature



Capital Asset Protection, Inc.
5996 Steubenville Pike,
Suite "O"
Pittsburgh, PA 15136
412-275-3822
www.cap-security.com



Shaler Area School District

Cost Sheet

Addendum "B"

November 18, 2021

Remainder of 2021-2022 school year

Post	Pay rate	Bill rate
Security Officer I Less than 2 years school security experience	\$14.00 per hour	\$20.36 per hour
Security Officer II Steve Klear – 19 years service at Shaler Area School District	\$14.50 per hour	\$20.57 per hour
Site Supervisor Bob Borner – 14 years service at Shaler Area School District	\$15.00 per hour	\$21.68 per hour
Special Event Officers	Normal wages	\$25.37 per hour