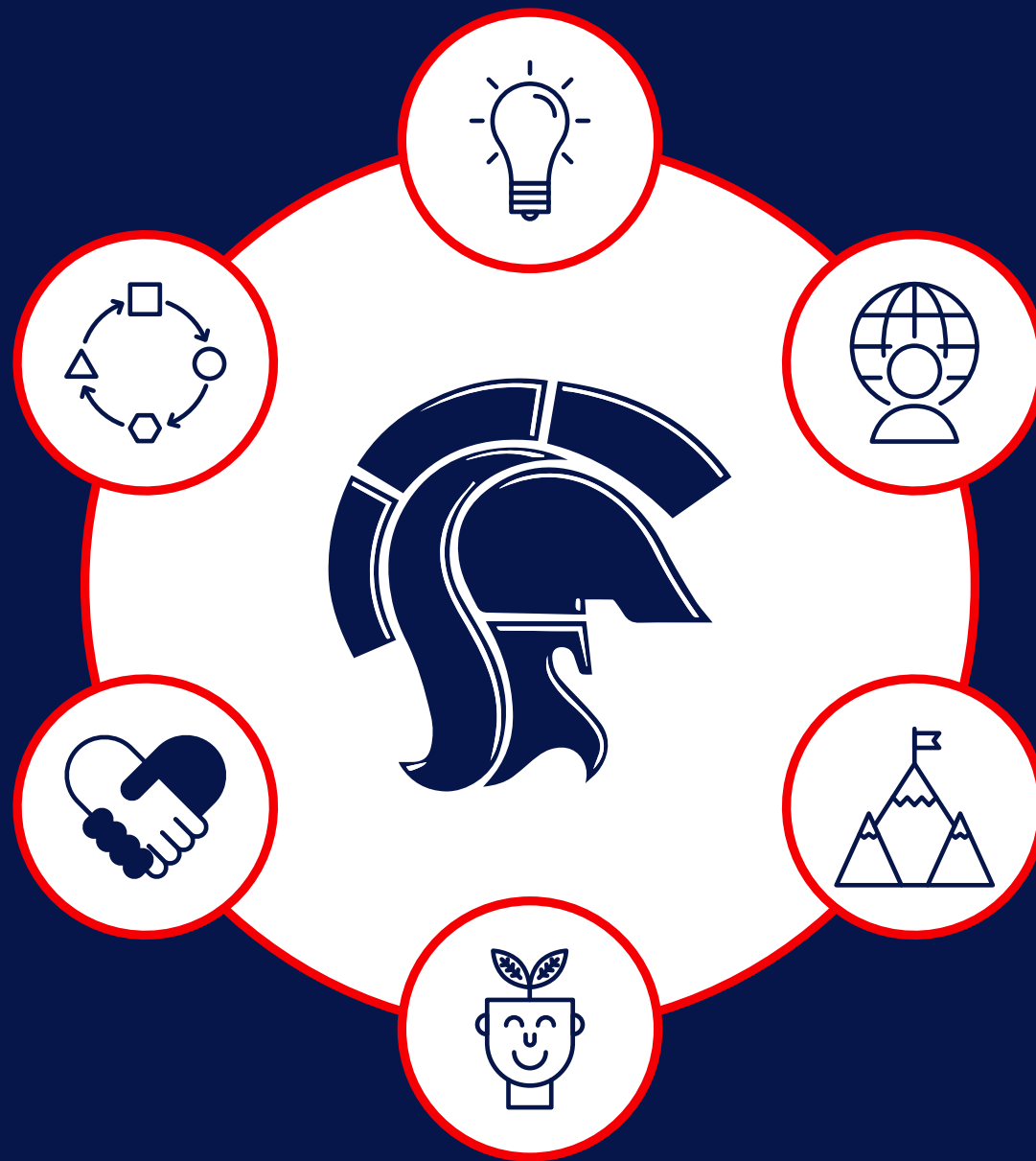


PORTRAIT OF A GRADUATE

Shaler Area School District



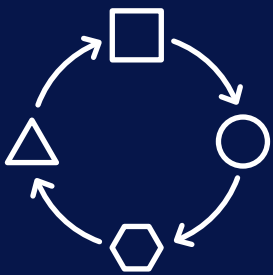
RESOURCEFULNESS

- Communication
- Opportunity
- Partnerships
- Develop and use skills to overcome challenges



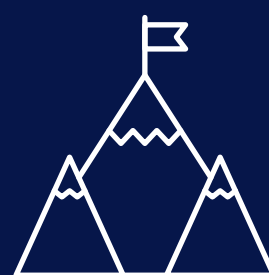
GLOBAL CITIZENSHIP

- Expose students to global communities and opportunities
- Prepare students with the knowledge and skills to be successful in today's world



ADAPTABILITY

- Situational awareness
- Changing demographics
- Socioeconomics
- Awareness of career paths and achievement goals



FACING CHALLENGES

- Support students as they face challenges in their self-awareness and personal development
- Provide strategies and methods for adaptability



EQUITY

- Confidence in self
- Overcome own implicit bias
- Be empathetic
- Have courage to be accepting of all people



GROWTH MINDSET

- Learn from mistakes, accept challenges, and talk through the process of learning
- Create systems that promote, and recognize work ethic over ability