

LEA Name : Shaler Area SD  
Address : 1800 Mount Royal Blvd  
Glenshaw, PA 15116

County : Allegheny  
AUN Number : 103028302  
LEA Type : SD

**Annual Financial Report**  
**Accuracy Certification Statement**

For Fiscal Year Ending  
**6/30/2019**

Pennsylvania Department of Education  
&  
Office of Comptroller Operations

PDE-2056: Intermediate Unit  
PDE-2057: School District, AVTS/CTC, Charter School,  
and Special Program Jointure

**CERTIFICATION: By signing this page I agree that the electronic data submitted is a complete and accurate statement of the financial operations and status of the local education agency for the fiscal year. It has been prepared in accordance with generally accepted accounting principles and established Commonwealth of PA reporting guidelines.**

  
\_\_\_\_\_  
Chief School Administrator Signature

11/27/2019  
\_\_\_\_\_  
Date

  
\_\_\_\_\_  
Board Secretary Signature

11/22/19  
\_\_\_\_\_  
Date

Sherri L Ludwig  
\_\_\_\_\_  
Contact Person  
  
ludwigs@sasd.k12.pa.us  
\_\_\_\_\_  
Contact Person E-mail Address

(412)492-1200      Ext :2806  
\_\_\_\_\_  
Contact Person Telephone Number  
  
(412)492-1236  
\_\_\_\_\_  
Contact Person Fax Number

**Audit Certification**  
**Annual Financial Report:**  
For Fiscal Year Ending 6/30/2019  
(Pursuant to PA School Code Section 218(b))

LEA Name : Shaler Area SD  
AUN Number : 103028302  
County : Allegheny


<b>Audit Certification Due:</b> 12/31/2019
---

This certification is applicable to the Annual Financial Report data submitted  
through the Consolidated Financial Reporting System on: 11/27/19  
Date

Auditing Firm: Maheer Duesell, CPA, S.

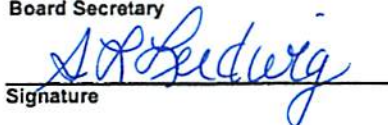
CERTIFICATION: By signing this page I agree that the financial statements of the school have been properly audited as noted above pursuant to Article XXIV, and in the auditor's professional opinion, the Annual Financial Report (PDE-2057) submitted on the date referenced is materially consistent with the audited financial statements.

Chief School Administrator

  
Signature

11/27/2019  
Date

Board Secretary

  
Signature

11/27/19  
Date

Sherri L Ludwig

Contact Person

ludwigs@sasd.k12.pa.us

Contact Person E-mail Address

(412)492-1200

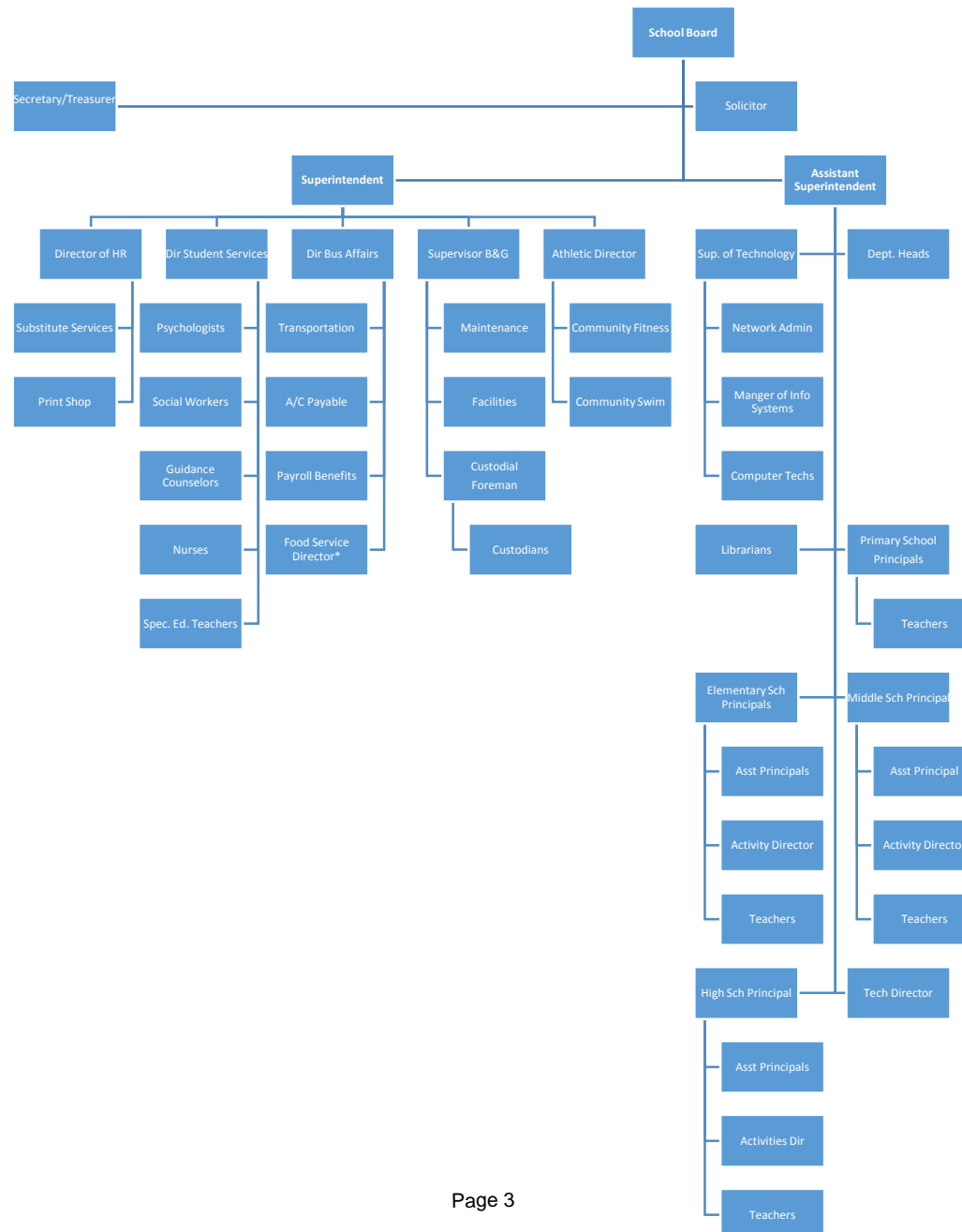
Ext :2806

Contact Person Telephone Number

(412)492-1236

Contact Person Fax Number

# Shaler Area School District Organizational Chart



<u>Val Number</u>	<u>Description</u>	<u>Justification</u>
12134	REG Fund 40: Data has been entered for Revenue code 9910 - Other Financing Sources. Please provide a description of this entry.  REG 9910, Fund 40: \$66,337.00	Prior year adjustment for immaterial adjustment after AFR submission.
16230	REP Fund 51 – Net Position - Beginning of Fiscal Year must equal Prior Year AFR, Net Position - End of Year. Justifications to this error must fully explain the situation that prompted a fund balance restatement. "Auditor Adjustment" is not a sufficient justification.  REP Fund 51 – Net Position - Beginning of Fiscal Year: \$238,156.00 REP Fund 51, Prior Year AFR, Net Position - End of Year: \$342,135.00	Prior year adjustment for immaterial adjustment after AFR submission.
40540	Expenditure code 5520 has an amount entered as a Special Item. Provide a description of this Special Item.  Exp detail, 5520, Fund 10: \$13,192.96	Write off of uncollectible student balances
41162	Expenditure Detail, Salaries (Object 100) and Benefits (Object 200 series): Amounts must be entered for both Salaries and Benefits.  Please verify following fund and function codes: Fund 10 Function 2390;	This was a pass thru amount for a Wellness Incentive from our Health Care Provider.
50160	SOIN: All Governmental Fund General Obligation Bonds must include an amount for Interest Paid during Fiscal Year. Correct data or enter a justification.	The Series 2006 CAB bonds do not have principal payments due until Fiscal 2029. Only activity is accretion.
50180	SOIN: All Governmental Fund General Obligation Bonds must include an amount for Amount Due Within One Year (Principal and Interest). Correct data or enter a justification.	The Series 2006 CAB bonds do not have interest payments due until Fiscal 2029
50280	SOIN: Current Year AFR amount must equal Prior Year AFR amount.  SOIN, Beg Bal, Gen Obl Bnds: \$79,776,043.00 PY Ending Bal, Gen Obl Bnds: \$66,820,191.00	In the prior year, principal and interest were deducted in error. Also for the current year reclassified notes out of other long term debt, see justification for other long term debt.
50281	SOIN: Current Year AFR amount must equal Prior Year AFR amount.  SOIN, Beg Bal, Other Long Term Debt: \$429,683.00 PY Ending Bal, Other Long Term Debt: \$10,516,363.00	Reclass of Notes into General Obligation Bonds/Notes

LEA : 103028302 Shaler Area SD

Printed 12/4/2019 5:07:28 PM

50440	SESS - 2260 Instruction and Curriculum Development Services: SESS Schedule amounts for Special Education vary from prior year by 40% or more. Correct the data or enter a justification.	Additional instructional and curriculum development services increased in 2018-19 due to a new program implemented.
	SESS Schedule 2260: \$124,717.92	
	Prior Year SESS Schedule 2260: \$86,657.26	

LEA : 103028302     Shaler Area SD

Printed 12/4/2019 5:06:03 PM

Amounts Expressed in Whole Dollars		<u>General Fund</u> <u>(10)</u>	<u>Public Purpose Trust</u> <u>(27)</u>	<u>Other Compt Approved</u> <u>(28)</u>	<u>Athletic / Activity</u> <u>(29)</u>	<u>Capital Reserve (690.</u> <u>1850)</u> <u>(31)</u>
<b>Assets And Deferred Outflows Of Resources</b>						
<b>Assets</b>						
0100	Cash and Cash Equivalents	13,504,845				
0110	Investments					
0120	Taxes Receivable	8,283,791				
0130	Due From Other Funds	270,673				
0141	Due From Other Governments	6,089,723				
0142	State Revenue Receivable					
0143	Federal Revenue Receivable					
0145	Other Intergovernmental Revenue Receivable	11,293				
0146	Due from Primary Government					
0147	Due from Component Unit					
0150	Other Receivables					
0170	Inventories					
0180	Prepaid Expenses (Expenditures)					
0190	Other Current Assets					
<b>Total Assets</b>		<b>\$28,160,325</b>				
0910	Deferred Outflows of Resources					
<b>Total Assets And Deferred Outflows Of Resources</b>		<b>\$28,160,325</b>				

LEA : 103028302      Shaler Area SD

Printed 12/4/2019 5:06:03 PM

Amounts Expressed in Whole Dollars		<u>Capital Reserve (1431)</u> <u>(32)</u>	<u>Other Capital Projects</u> <u>Fund</u> <u>(39)</u>	<u>Debt Service</u> <u>(40)</u>	<u>Permanent</u> <u>(90)</u>	<u>Total Governmental</u> <u>Funds</u>
<b>Assets And Deferred Outflows Of Resources</b>						
<b>Assets</b>						
0100	Cash and Cash Equivalents		16,909,325	809,170		31,223,340
0110	Investments					
0120	Taxes Receivable					8,283,791
0130	Due From Other Funds		30,729			301,402
0141	Due From Other Governments					6,089,723
0142	State Revenue Receivable					
0143	Federal Revenue Receivable					
0145	Other Intergovernmental Revenue Receivable					11,293
0146	Due from Primary Government					
0147	Due from Component Unit					
0150	Other Receivables					
0170	Inventories					
0180	Prepaid Expenses (Expenditures)					
0190	Other Current Assets					
<b>Total Assets</b>			<b>\$16,940,054</b>	<b>\$809,170</b>		<b>\$45,909,549</b>
0910	Deferred Outflows of Resources					
<b>Total Assets And Deferred Outflows Of Resources</b>			<b>\$16,940,054</b>	<b>\$809,170</b>		<b>\$45,909,549</b>

LEA : 103028302     Shaler Area SD

Printed 12/4/2019 5:06:03 PM

Amounts Expressed in Whole Dollars	<u>General Fund</u> <u>(10)</u>	<u>Public Purpose Trust</u> <u>(27)</u>	<u>Other Compt Approved</u> <u>(28)</u>	<u>Athletic / Activity</u> <u>(29)</u>	<u>Capital Reserve (690.</u> <u>1850)</u> <u>(31)</u>
<b>Liabilities And Deferred Inflows Of Resources And Fund Balances</b>					
<b>Liabilities</b>					
0400 Due to Other Funds	67,561				
0411 Due to Other Governments					
0412 Due to Primary Government					
0413 Due to Component Unit					
0420 Accounts Payable	964,855				
0430 Contracts Payable					
0440 Current Portion of Long-Term Debt					
0450 Short-Term Payables					
0461 Accrued Salaries and Benefits	8,627,584				
0462 Payroll Deductions and Withholding					
0480 Unearned Revenues					
0490 Other Current Liabilities	26,540				
<b>Total Liabilities</b>	<b>\$9,686,540</b>				
0950 Deferred Inflows of Resources	7,164,508				
<b>Fund Balances</b>					
0810 Nonspendable Fund Balance					
0820 Restricted Fund Balance					
0830 Committed Fund Balance					
0840 Assigned Fund Balance	5,526,235				
0850 Unassigned Fund Balance	5,783,042				
<b>Total Fund Balances</b>	<b>\$11,309,277</b>				
<b>Total Liabilities, Deferred Inflows Of Resources And Fund Balances</b>	<b>\$28,160,325</b>				



LEA : 103028302     Shaler Area SD

Printed 12/4/2019 5:06:03 PM

Amounts Expressed in Whole Dollars		<u>Capital Reserve (1431)</u> <u>(32)</u>	<u>Other Capital Projects</u> <u>Fund</u> <u>(39)</u>	<u>Debt Service</u> <u>(40)</u>	<u>Permanent</u> <u>(90)</u>	<u>Total Governmental</u> <u>Funds</u>
<b>Liabilities And Deferred Inflows Of Resources And Fund Balances</b>						
<b>Liabilities</b>						
0400	Due to Other Funds		270,673			338,234
0411	Due to Other Governments					
0412	Due to Primary Government					
0413	Due to Component Unit					
0420	Accounts Payable		1,544,151			2,509,006
0430	Contracts Payable					
0440	Current Portion of Long-Term Debt					
0450	Short-Term Payables					
0461	Accrued Salaries and Benefits					8,627,584
0462	Payroll Deductions and Withholding					
0480	Unearned Revenues					
0490	Other Current Liabilities					26,540
<b>Total Liabilities</b>			<b>\$1,814,824</b>			<b>\$11,501,364</b>
0950	Deferred Inflows of Resources					7,164,508
<b>Fund Balances</b>						
0810	Nonspendable Fund Balance					
0820	Restricted Fund Balance		14,741,892	809,170		15,551,062
0830	Committed Fund Balance		383,338			383,338
0840	Assigned Fund Balance					5,526,235
0850	Unassigned Fund Balance					5,783,042
<b>Total Fund Balances</b>			<b>\$15,125,230</b>	<b>\$809,170</b>		<b>\$27,243,677</b>
<b>Total Liabilities, Deferred Inflows Of Resources And Fund Balances</b>			<b>\$16,940,054</b>	<b>\$809,170</b>		<b>\$45,909,549</b>

LEA : 103028302     Shaler Area SD

Printed 12/4/2019 5:06:07 PM

Amounts Expressed in Whole Dollars		<u>General Fund</u> <u>(10)</u>	<u>Public Purpose Trust</u> <u>(27)</u>	<u>Other Compt Approved</u> <u>(28)</u>	<u>Athletic / Activity</u> <u>(29)</u>	<u>Capital Reserve (690.</u> <u>1850)</u> <u>(31)</u>
<b>Revenues</b>						
6000	Revenue from Local Sources	55,103,070				
7000	Revenue from State Sources	27,825,038				
8000	Revenue from Federal Sources	1,040,226				
<b>Total Revenues</b>		<b>\$83,968,334</b>				
<b>Expenditures</b>						
1000	Instruction	49,958,859				
2000	Support Services	24,930,473				
3000	Operation of Non-Instructional Services	1,967,635				
4000	Facilities Acquisition, Construction and Improvement Services					
5110	Debt Service	197,942				
5130	Refund of Prior Year Revenues / Receipts	7,704				
<b>Total Expenditures</b>		<b>\$77,062,613</b>				
<b>Excess (Deficiency) Of Revenues Over Expenditures</b>		<b>\$6,905,721</b>				
<b>Other Financing Sources (Uses)</b>						
9110	Face Value of Bonds Issued					
9120	Proceeds from Refunding of Bonds					
9130	Bond Premiums					
9200	Proceeds from Extended-Term Financing					
9300	Interfund Transfers - IN					
9400	Sale of or Compensation for Loss of Fixed Assets	15,280				
9710	Transfers from Component Units					
9720	Transfers from Primary Governments					
9910	Other Financing Sources Not Listed in the 9000 Series					
9990	Insurance Recoveries					
5120	Debt Service – Refunded Bonds					
5150	Bond Discounts					
5200	Interfund Transfers – Out	7,111,634				
5300	Transfers Out to Component Units/Primary Governments					
<b>Total Other Financing Sources (Uses)</b>		<b>(\$7,096,354)</b>				

LEA : 103028302     Shaler Area SD

Printed 12/4/2019 5:06:07 PM

Amounts Expressed in Whole Dollars		<u>Capital Reserve (1431)</u> <u>(32)</u>	<u>Other Capital Projects</u> <u>Fund</u> <u>(39)</u>	<u>Debt Service</u> <u>(40)</u>	<u>Permanent</u> <u>(90)</u>	<u>Total Governmental</u> <u>Funds</u>
<b>Revenues</b>						
6000	Revenue from Local Sources		65,980	315,614		55,484,664
7000	Revenue from State Sources					27,825,038
8000	Revenue from Federal Sources					1,040,226
<b>Total Revenues</b>			<b>\$65,980</b>	<b>\$315,614</b>		<b>\$84,349,928</b>
<b>Expenditures</b>						
1000	Instruction					49,958,859
2000	Support Services		318,044	11,447		25,259,964
3000	Operation of Non-Instructional Services					1,967,635
4000	Facilities Acquisition, Construction and Improvement Services		2,803,927			2,803,927
5110	Debt Service			7,238,930		7,436,872
5130	Refund of Prior Year Revenues / Receipts					7,704
<b>Total Expenditures</b>			<b>\$3,121,971</b>	<b>\$7,250,377</b>		<b>\$87,434,961</b>
<b>Excess (Deficiency) Of Revenues Over Expenditures</b>			<b>(\$3,055,991)</b>	<b>(\$6,934,763)</b>		<b>(\$3,085,033)</b>
<b>Other Financing Sources (Uses)</b>						
9110	Face Value of Bonds Issued		12,750,000			12,750,000
9120	Proceeds from Refunding of Bonds					
9130	Bond Premiums		2,359,825			2,359,825
9200	Proceeds from Extended-Term Financing					
9300	Interfund Transfers - IN			7,111,634		7,111,634
9400	Sale of or Compensation for Loss of Fixed Assets					15,280
9710	Transfers from Component Units					
9720	Transfers from Primary Governments					
9910	Other Financing Sources Not Listed in the 9000 Series			66,337		66,337
9990	Insurance Recoveries					
5120	Debt Service – Refunded Bonds					
5150	Bond Discounts					
5200	Interfund Transfers – Out					7,111,634
5300	Transfers Out to Component Units/Primary Governments					
<b>Total Other Financing Sources (Uses)</b>			<b>\$15,109,825</b>	<b>\$7,177,971</b>		<b>\$15,191,442</b>

Amounts Expressed in Whole Dollars		<u>General Fund</u> <u>(10)</u>	<u>Public Purpose Trust</u> <u>(27)</u>	<u>Other Compt Approved</u> <u>(28)</u>	<u>Athletic / Activity</u> <u>(29)</u>	<u>Capital Reserve</u> <u>(690.</u> <u>1850)</u> <u>(31)</u>
<b>Special And Extraordinary Items</b>						
9920	Special Items – Gains					
9930	Extraordinary Items – Gains					
5520	Special Items – Losses	13,193				
5530	Extraordinary Items – Losses					
<b>Net Change In Fund Balances</b>		<b>(\$203,826)</b>				
<b>Fund Balance</b>						
0001	Fund Balance - Beginning of Fiscal Year	11,513,108				
<b>Fund Balance - End Of Year</b>		<b>\$11,309,282</b>				

Amounts Expressed in Whole Dollars		<u>Capital Reserve (1431)</u> <u>(32)</u>	<u>Other Capital Projects</u> <u>Fund</u> <u>(39)</u>	<u>Debt Service</u> <u>(40)</u>	<u>Permanent</u> <u>(90)</u>	<u>Total Governmental</u> <u>Funds</u>
<b>Special And Extraordinary Items</b>						
9920	Special Items – Gains					
9930	Extraordinary Items – Gains					
5520	Special Items – Losses					13,193
5530	Extraordinary Items – Losses					
<b>Net Change In Fund Balances</b>			<b>\$12,053,834</b>	<b>\$243,208</b>		<b>\$12,093,216</b>
<b>Fund Balance</b>						
0001	Fund Balance - Beginning of Fiscal Year		3,071,396	565,962		15,150,466
<b>Fund Balance - End Of Year</b>			<b>\$15,125,230</b>	<b>\$809,170</b>		<b>\$27,243,682</b>

LEA : 103028302     Shaler Area SD

Printed 12/4/2019 5:06:10 PM

Amounts Expressed in Whole Dollars	<u>Food Service</u> <u>(51)</u>	<u>Child Care</u> <u>Operations</u> <u>(52)</u>	<u>Other Enterprise</u> <u>(58)</u>	<u>TOTAL</u>	<u>Internal Service</u> <u>(60)</u>
<b>Assets And Deferred Outflows Of Resources</b>					
<b>Current Assets</b>					
0100 Cash and Cash Equivalents	187,924			187,924	
0110 Investments					
0130 Due From Other Funds	36,832			36,832	
0141 Due From Other Governments	121,005			121,005	
0142 State Revenue Receivable					
0143 Federal Revenue Receivable					
0146 Due from Primary Government					
0147 Due from Component Unit					
0150 Other Receivables	39,313			39,313	
0170 Inventories	45,341			45,341	
0180 Prepaid Expenses (Expenditures)					
0190 Other Current Assets					
<b>Total Current Assets</b>	<b>\$430,415</b>			<b>\$430,415</b>	
<b>Noncurrent Assets</b>					
0211 Land					
0212 Site Improvements (Net)					
0220 Buildings and Building Improvements (Net)					
0230 Machinery, Equipment and Furniture (Net)	23,087			23,087	
0250 Construction in Progress					
0260 Long Term Prepayments					
0290 Other Noncurrent Assets					
<b>Total Noncurrent Assets</b>	<b>\$23,087</b>			<b>\$23,087</b>	
0910 Deferred Outflows of Resources					
<b>Total Assets And Deferred Outflows Of Resources</b>	<b>\$453,502</b>			<b>\$453,502</b>	

LEA : 103028302      Shaler Area SD

Printed 12/4/2019 5:06:10 PM

Amounts Expressed in Whole Dollars	Food Service (51)	Child Care Operations (52)	Other Enterprise (58)	TOTAL	Internal Service (60)
<b>Liabilities And Deferred Inflows Of Resources And Net Position</b>					
<b>Current Liabilities</b>					
0400 Due to Other Funds					
0411 Due to Other Governments					
0413 Due to Component Unit					
0420 Accounts Payable	237,423			237,423	
0430 Contracts Payable					
0440 Current Portion of Long-Term Debt					
0450 Short-Term Payables					
0461 Accrued Salaries and Benefits					
0462 Payroll Deductions and Withholding					
0480 Unearned Revenues	59,307			59,307	
0490 Other Current Liabilities					
<b>Total Current Liabilities</b>	<b>\$296,730</b>			<b>\$296,730</b>	
<b>Noncurrent Liabilities</b>					
0510 Bonds Payable					
0520 Extended-Term Financing Agreements Payable					
0530 Lease-Purchase Obligations					
0540 Accumulated Compensated Absences					
0550 Authority Lease Obligations					
0560 Other Post-Employment Benefits (OPEB)					
0570 Net Pension Liability					
0599 Other Noncurrent Liabilities					
<b>Total Noncurrent Liabilities</b>					
<b>Total Liabilities</b>	<b>\$296,730</b>			<b>\$296,730</b>	
0950 Deferred Inflows of Resources					
<b>Net Position</b>					
0791 Net Investment in Capital Assets	23,087			23,087	
0008 Restricted Net Position (0792 – 0798)					
0799 Unrestricted Net Position	133,685			133,685	
<b>Total Net Position</b>	<b>\$156,772</b>			<b>\$156,772</b>	
<b>Total Liabilities And Deferred Inflows Of Resources And Net Position</b>	<b>\$453,502</b>			<b>\$453,502</b>	

Amounts Expressed in Whole Dollars	<u>Food Service</u> <u>(51)</u>	<u>Child Care Operations</u> <u>(52)</u>	<u>Other Enterprise</u> <u>(58)</u>	<u>TOTAL</u>	<u>Internal Service</u> <u>(60)</u>
<b>Operating Revenues</b>					
6600 Food Service Revenue	934,882			934,882	
0071 Charges for Services					
0072 Other Operating Revenue					
<b>Total Operating Revenues</b>	<b>\$934,882</b>			<b>\$934,882</b>	
<b>Operating Expenses</b>					
100 Personnel Services – Salaries					
200 Personnel Services – Employee Benefits					
300 Purchased Professional and Technical Services					
400 Purchased Property Services					
500 Other Purchased Services	1,820,577			1,820,577	
600 Supplies	109,485			109,485	
740 Depreciation	9,223			9,223	
810 Dues and Fees					
890 Miscellaneous Expenditures					
<b>Total Operating Expenses</b>	<b>\$1,939,285</b>			<b>\$1,939,285</b>	
<b>Operating Income (Loss)</b>	<b>(\$1,004,403)</b>			<b>(\$1,004,403)</b>	
<b>Non Operating Revenues (Expenses)</b>					
6500 Earnings on Investments	4,631			4,631	
6920 Contributions and Donations from Private Sources					
6930 Gains or Losses on Sale of Fixed Assets	(48,530)			(48,530)	
6991 Refunds of a Prior Year Expenditure					
7000 Revenue from State Sources	75,612			75,612	
8000 Revenue from Federal Sources	891,306			891,306	
9990 Insurance Recoveries					
820 Claims and Judgments Against the LEA					
830 Interest					
<b>TOTAL Non Operating Revenues (Expenses)</b>	<b>\$923,019</b>			<b>\$923,019</b>	
<b>Income (Loss) Before Contributions And Transfers</b>	<b>(\$81,384)</b>			<b>(\$81,384)</b>	



Amounts Expressed in Whole Dollars	<u>Food Service</u> (51)	<u>Child Care Operations</u> (52)	<u>Other Enterprise</u> (58)	<u>TOTAL</u>	<u>Internal Service</u> (60)
<b>Contributions, Transfers, and Special and Extraordinary Items</b>					
5200 Interfund Transfers – Out					
5300 Transfers Out to Component Units/Primary Governments					
5520 Special Items – Losses					
5530 Extraordinary Items – Losses					
9300 Interfund Transfers - IN					
9500 Capital Contributions					
9700 Transfers IN From Component Units/Primary Governments					
9920 Special Items – Gains					
9930 Extraordinary Items – Gains					
<b>Change In Net Position</b>	<b>(\$81,384)</b>			<b>(\$81,384)</b>	
0002 Net Position - Beginning of Fiscal Year	238,156			238,156	
0003 Accounting Changes / Residual Equity Transfers					
<b>Net Position - End Of Year</b>	<b>\$156,772</b>			<b>\$156,772</b>	

LEA : 103028302     Shaler Area SD

Printed 12/4/2019 5:06:17 PM

Amounts Expressed in Whole Dollars		<u>Food Service</u> <u>(51)</u>	<u>Child Care Operations</u> <u>(52)</u>	<u>Other Enterprise</u> <u>(58)</u>	<u>TOTAL</u>	<u>Internal Service(60)</u>
<b>Cash Flows From Operating Activities</b>						
0011	Cash Receipts From Users	942,269			942,269	
0012	Cash Receipts From Assessments Made to Other Funds					
0013	Cash Receipts From Earnings on Investments					
0014	Cash Receipts From Other Operating Revenue					
0015	Cash Payments To Employees For Services					
0016	Cash Payments For Insurance Claims					
0017	Cash Payments To Suppliers For Goods and Services	1,806,560			1,806,560	
0018	Cash Payments For Other Operating Expenses					
<b>Net Cash Provided By (Used For) Operating Activities</b>		<b>(\$864,291)</b>			<b>(\$864,291)</b>	
<b>Cash Flows From Non-Capital Financing Activities</b>						
0021	Receipts From Local Sources - 6000	22,662			22,662	
0022	Receipts From State Sources - 7000	74,353			74,353	
0023	Receipts From Federal Sources -8000	771,423			771,423	
0024	Notes and Loans Received (Repaid)					
0025	Interest Paid on Notes/Loans - 5100-830					
0026	Operating Transfers In (Out)/Residual Equity Trans					
0027	Operating Transfers In (Out) Primary Government / Comp Unit					
0028	Receipts From Refund of Prior Year Expenditures - 6991					
0029	Special and Extraordinary Gains (losses)					
0030	Receipts from Insurance Recoveries -9990					
<b>Net Cash Prov By (Used for) Non-Capital Financing Activities</b>		<b>\$868,438</b>			<b>\$868,438</b>	
<b>Cash Flows From Capital and Related Financing Activities</b>						
0031	Payments For Fac Acq, Const, and Imp - 4000					
0032	Gain / (Loss) on Sale of Fixed Assets - 6930					
0033	Proceeds From Extended Term Financing - 9200					
0034	Principal Paid on Financing Agreements					
0035	Interest Paid on Financing Agreements - 5100-830					
0036	(Inc) Dec in Contributed Capital					
<b>Net Cash Prov By (Used for) Capital and Related Financing Activities</b>						
<b>Cash Flows From Investing Activities</b>						
0041	Earnings on Investments - 6500	4,631			4,631	
0042	Purchase of Inv Securities / Deposits to Inv Pools					
0043	Receipts From Investment Pool Withdrawals					
0044	Proceeds from Sale and Maturity of Inv Securities					

LEA : 103028302     Shaler Area SD

Printed 12/4/2019 5:06:17 PM

0045   Loans Received (Paid)

Net Cash Prov By (Used for) Investing Activities	\$4,631	\$4,631
--	---------	---------

LEA : 103028302      Shaler Area SD

Printed 12/4/2019 5:06:17 PM

	Food Service (51)	Child Care Operations (52)	Other Enterprise (58)	TOTAL	Internal Service (60)
Net Increase (Decrease) in Cash Flows	8,778			8,778	
0004 Cash and Cash Equivalents Beginning of Year	179,146			179,146	
Cash and Cash Equivalents at Year End	\$187,924			\$187,924	
Reconciliation of Operating Income (Loss) To Net Cash Provided by (Used For) Operating Activities					
0005 Operating Income (Loss) per REP	(1,004,403)			(1,004,403)	
Adjustments					
0051 Depreciation and Net Amortization	9,223			9,223	
0052 Provision for Uncollectible Accounts					
0053 Other Adjustments	101,604			101,604	
Effect of Changes in Assets, Liabilities, Deferred Outflows and Deferred Inflows					
0054 (Inc) Dec In Accounts Receivable (0120-0150)	12,364			12,364	
0055 Advances to Other Funds (0160)	(9,523)			(9,523)	
0056 (Inc) Dec in Inventories (0170)	(6,240)			(6,240)	
0057 (Inc) Dec in Prepaid Expenses (0180)					
0058 (Inc) Dec in Other Current or Noncurrent Assets					
0064 Deferred Outflows (0910)					
0059 Inc (Dec) in Accounts Payable (0400-0450)	28,138			28,138	
0060 Inc (Dec) in Accrued Salaries/Benefits (0461)					
0065 Inc (Dec) in Net Pension Liabilities (0570)					
0066 Inc (Dec) in Other Postemp Benefit Oblig (0560)					
0061 Inc (Dec) in Payroll Deductions/Withholding (0462)					
0062 Inc (Dec) in Unearned Revenue (0480)	4,546			4,546	
0063 Inc (Dec) in Other Current or Noncurrent Liabilities					
0067 Deferred Inflows (0950)					
Total Adjustments	\$140,112			\$140,112	
Cash Provided By (Used for) Total	(\$864,291)			(\$864,291)	

COMBINED STATEMENT OF CASH FLOWS  
SCHEDULE OF NONCASH INVESTING, CAPITAL, AND FINANCING ACTIVITIES

Explanation of Transaction and Balance Sheet Effect	Amount
The Food Service Fund received donated commodities from the U.S. Department of Agriculture in the amount of \$105,944 during the year.	105,944
Total	\$105,944

LEA : 103028302     Shaler Area SD

Printed 12/4/2019 5:06:19 PM

Amounts Expressed in Whole Dollars	<u>Private Purpose Trust</u> <u>(71)</u>	<u>Investment Trust</u> <u>(72)</u>	<u>Pension Trust</u> <u>(73)</u>	<u>Activity</u> <u>(81)</u>
<b>Assets And Deferred Outflows Of Resources</b>				
<b>Assets</b>				
0100 Cash and Cash Equivalents	256,356			465,450
0110 Investments				
0130 Due From Other Funds				
0147 Due from Component Unit				
0150 Other Receivables				
0170 Inventories				
0180 Prepaid Expenses (Expenditures)				
0190 Other Current Assets				
0220 Buildings and Building Improvements (Net)				
0230 Machinery, Equipment and Furniture (Net)				
<b>Total Assets</b>	<b>\$256,356</b>			<b>\$465,450</b>
0910 Deferred Outflows of Resources				
<b>Total Assets And Deferred Outflows Of Resources</b>	<b>\$256,356</b>			<b>\$465,450</b>

LEA : 103028302     Shaler Area SD

Printed 12/4/2019 5:06:19 PM

Amounts Expressed in Whole Dollars		<u>Other Agency</u> <u>(89)</u>	<u>Discrete Component Units</u> <u>(98)</u>	<u>Discrete Component Units</u> <u>(99)</u>	<u>Total Fiduciary Funds</u>
<b>Assets And Deferred Outflows Of Resources</b>					
<b>Assets</b>					
0100	Cash and Cash Equivalents				721,806
0110	Investments				
0130	Due From Other Funds				
0147	Due from Component Unit				
0150	Other Receivables				
0170	Inventories				
0180	Prepaid Expenses (Expenditures)				
0190	Other Current Assets				
0220	Buildings and Building Improvements (Net)				
0230	Machinery, Equipment and Furniture (Net)				
<b>Total Assets</b>					<b>\$721,806</b>
0910	Deferred Outflows of Resources				
<b>Total Assets And Deferred Outflows Of Resources</b>					<b>\$721,806</b>

LEA : 103028302     Shaler Area SD

Printed 12/4/2019 5:06:19 PM

Amounts Expressed in Whole Dollars	<u>Private Purpose Trust</u> <u>(71)</u>	<u>Investment Trust</u> <u>(72)</u>	<u>Pension Trust</u> <u>(73)</u>	<u>Activity</u> <u>(81)</u>
<b>Liabilities, Deferred Inflows Of Resources And Net Position</b>				
<b>Liabilities</b>				
0400 Due to Other Funds				
0411 Due to Other Governments				
0412 Due to Primary Government				
0413 Due to Component Unit				
0420 Accounts Payable	45,215			
0430 Contracts Payable				
0450 Short-Term Payables				
0461 Accrued Salaries and Benefits				
0462 Payroll Deductions and Withholding				
0480 Unearned Revenues				
0490 Other Current Liabilities				465,450
<b>Total Liabilities</b>	<b>\$45,215</b>			<b>\$465,450</b>
0950 Deferred Inflows of Resources				
<b>Net Position</b>				
0791 Net Investment in Capital Assets				
0009 Restricted Net Position (0792 – 0798)	211,141			
0799 Unrestricted Net Position				
<b>Total Net Position</b>	<b>\$211,141</b>			
<b>Total Liabilities, Deferred Inflows Of Resources And Net Position</b>	<b>\$256,356</b>			<b>\$465,450</b>



LEA : 103028302     Shaler Area SD

Printed 12/4/2019 5:06:19 PM

Amounts Expressed in Whole Dollars

<u>Other Agency</u> <u>(89)</u>	<u>Discrete Component Units</u> <u>(98)</u>	<u>Discrete Component Units</u> <u>(99)</u>	<u>Total Fiduciary Funds</u>
------------------------------------	--	--	------------------------------

Liabilities, Deferred Inflows Of Resources And Net Position

Liabilities

0400	Due to Other Funds		
0411	Due to Other Governments		
0412	Due to Primary Government		
0413	Due to Component Unit		
0420	Accounts Payable		45,215
0430	Contracts Payable		
0450	Short-Term Payables		
0461	Accrued Salaries and Benefits		
0462	Payroll Deductions and Withholding		
0480	Unearned Revenues		
0490	Other Current Liabilities		465,450
Total Liabilities			\$510,665

0950 Deferred Inflows of Resources

Net Position

0791	Net Investment in Capital Assets		
0009	Restricted Net Position (0792 – 0798)		211,141
0799	Unrestricted Net Position		
Total Net Position			\$211,141
Total Liabilities, Deferred Inflows Of Resources And Net Position			\$721,806

LEA : 103028302     Shaler Area SD

Printed 12/4/2019 5:06:20 PM

Amounts Expressed in Whole Dollars	<u>Private Purpose Trust</u> <u>(71)</u>	<u>Investment Trust</u> <u>(72)</u>	<u>Pension Trust</u> <u>(73)</u>	<u>Discrete Component</u> <u>Units</u> <u>(98)</u>	<u>Discrete Component</u> <u>Units</u> <u>(99)</u>	<u>Total Fiduciary</u> <u>Funds</u>
<b>Additions</b>						
0091 Gifts and Contributions	37,533					37,533
0092 Other Additions	2,414					2,414
<b>Deductions</b>						
0093 Scholarships Awarded	46,089					46,089
0094 Other Deductions						
<b>Change In Net Position</b>	<b>(\$6,142)</b>					<b>(\$6,142)</b>
0006 Net Position – Beginning of Fiscal Year	217,283					217,283
0007 Net Position Held in Trust for Pension Benefits						
<b>Net Position - End of Fiscal Year</b>	<b>\$211,141</b>					<b>\$211,141</b>

	Revenue Reported In Current Year	Current Year Tax Accrual	Prior Year Tax Accrual	Taxes Collected In Current Year
<b>Revenue from Local Sources</b>				
6111 Current Real Estate Taxes	45,488,140.35			45,488,140.35
6113 Public Utility Realty Taxes	51,693.78			51,693.78
6143 Current Act 511 Local Services Taxes	23,032.34			23,032.34
6151 Current Act 511 Earned Income Taxes	5,532,041.79			5,532,041.79
6153 Current Act 511 Real Estate Transfer Taxes	570,476.28			570,476.28
6411 Delinquent Real Estate Taxes	1,366,153.55			1,366,153.55
6451 Delinquent Act 511 Earned Income Taxes	5,395.81			5,395.81
6500 Earnings on Investments	558,716.96			
6700 Revenues from LEA Activities	53,663.00			
6832 Federal IDEA Revenue Received as Pass Through	890,634.93			
6890 Other Revenue from Intermediary Sources	112,127.94			
6910 Rentals	90,000.20			
6920 Contributions and Donations from Private Sources	29,962.67			
6942 Summer School Tuition	13,908.00			
6980 Revenue from Community Services Activities	48,688.25			
6991 Refunds of a Prior Year Expenditure	259,626.02			
6999 Other Revenues Not Specified Above	8,808.45			
<b>TOTAL Revenue from Local Sources</b>	<b>\$55,103,070.32</b>			<b>\$53,036,933.90</b>

	Revenue Reported In Current Year			
<b>Revenue from State Sources</b>				
7110 Basic Education Funding	11,509,695.00			
7160 Tuition for Orphans Subsidy	23,680.53			
7271 Special Education funds for School-Aged Pupils	3,429,809.72			
7311 Pupil Transportation Subsidy	1,546,620.79			
7312 Nonpublic and Charter School Pupil Transportation Subsidy	136,290.00			
7320 Rental and Sinking Fund Payments / Building Reimbursement Subsidy	457,707.76			
7330 Health Services (Medical, Dental, Nurse, Act 25)	78,297.71			
7340 State Property Tax Reduction Allocation	2,041,240.80			
7361 School Safety and Security Grants	55,020.00			
7505 Ready to Learn Block Grant	706,470.00			
7506 PAsmart Grants	7,558.60			
7599 Other State Revenue Not Listed Elsewhere in the 7000 Series	25,000.00			
7810 State Share of Social Security and Medicare Taxes	1,476,567.25			
7820 State Share of Retirement Contributions	6,331,079.64			
<b>TOTAL Revenue from State Sources</b>	<b>\$27,825,037.80</b>			

	Revenue Reported In Current Year			
<b><u>Revenue from Federal Sources</u></b>				
8514 NCLB, Title I - Improving the Academic Achievement of the Disadvantaged	647,679.58			
8515 NCLB, Title II - Preparing, Training and Recruiting High Quality Teachers and Principals	86,922.10			
8517 NCLB, Title IV - 21St Century Schools	41,525.00			
8690 Other Restricted Federal Grants-in-Aid Through the Commonwealth of PA	1,784.00			
8810 School-Based Access Medicaid Reimbursement Program (SBAP) Reimbursements (Access)	262,315.18			
<b>TOTAL Revenue from Federal Sources</b>	<b>\$1,040,225.86</b>			

	Revenue Reported In Current Year			
<b><u>Other Financing Sources</u></b>				
9400 Sale of or Compensation for Loss of Fixed Assets	15,279.98			
<b>TOTAL Other Financing Sources</b>	<b>\$15,279.98</b>			
<b>TOTAL FROM ALL SOURCES</b>	<b>\$83,983,613.96</b>			<b>\$53,036,933.90</b>

Revenue from Local Sources	55,103,070.32
Revenue from State Sources	27,825,037.80
Revenue from Federal Sources	1,040,225.86
Other Financing Sources	15,279.98
<b>TOTAL FROM ALL SOURCES</b>	<b>\$83,983,613.96</b>

LEA : 103028302      Shaler Area SD

Printed 12/4/2019 5:06:27 PM

General Fund (10)

1000 Instruction	Total
<b>100 <u>Personnel Services – Salaries</u></b>	
100 Personnel Services – Salaries	26,033,041.30
<b>Total Personnel Services – Salaries</b>	<b>\$26,033,041.30</b>
<b>200 <u>Personnel Services – Employee Benefits</u></b>	
210 Group Insurance – Contracted Provider	5,747,754.33
220 Social Security Contributions	1,960,998.37
230 PSERS Retirement Contributions	8,835,736.90
250 Unemployment Compensation	9,470.80
260 Workers' Compensation	181,450.73
280 Other Post-Employment Benefits (OPEB)	41,298.26
<b>Total Personnel Services – Employee Benefits</b>	<b>\$16,776,709.39</b>
<b>300 <u>Purchased Professional and Technical Services</u></b>	
322 Professional Educational Services – Ius	659,577.12
323 Professional Educational Services – Other Educational Agencies	209,330.74
329 Professional Educational Services – Other	23,700.00
330 Other Professional Services	4,000.00
<b>Total Purchased Professional and Technical Services</b>	<b>\$896,607.86</b>
<b>400 <u>Purchased Property Services</u></b>	
430 Repairs and Maintenance Services	34,330.75
<b>Total Purchased Property Services</b>	<b>\$34,330.75</b>
<b>500 <u>Other Purchased Services</u></b>	
510 Student Transportation Services	10,013.87
561 Tuition To Other School Districts Within the State	101,529.20
562 Tuition To Pennsylvania Charter Schools	1,717,678.98
563 Tuition To Nonpublic Schools	131,422.01
564 Tuition To Career and Technology Centers	1,492,431.81
567 Tuition To Approved Private Schools (APS) and PA Chartered Schools for the Deaf and Blind	1,025,271.02
568 Tuition To Private Residential Rehabilitative Institutions (PRRI) [In-State] and Detention Centers	280,989.50
569 Tuition – Other	29,348.70
580 Travel	4,099.13
591 Services Purchased Locally	538.22
594 IU Payment By Withholding for Institutionalized Children's Programs – Special Classes	14,442.37
599 Other Miscellaneous Purchased Services	901.66
<b>Total Other Purchased Services</b>	<b>\$4,808,666.47</b>
<b>600 <u>Supplies</u></b>	
610 General Supplies	332,324.89
640 Books and Periodicals	532,523.78
650 Supplies & Fees – Technology Related	196,374.03
<b>Total Supplies</b>	<b>\$1,061,222.70</b>
<b>700 <u>Property</u></b>	
752 Capital Equipment – Original and Additional	62,045.80
758 Capitalized Technology Software - Original	174,054.57
762 Capitalized Equipment - Replacement	14,526.21



LEA : 103028302     Shaler Area SD

Printed 12/4/2019 5:06:27 PM

<b>General Fund (10)</b>		
<b>1000 Instruction</b>		<b><u>Total</u></b>
<b>700 <u>Property</u></b>		
768 Capitalized Technology Software - Replacement	93,200.68	
<b>Total Property</b>	<b>\$343,827.26</b>	
<b>800 <u>Other Objects</u></b>		
810 Dues and Fees	4,453.00	
<b>Total Other Objects</b>	<b>\$4,453.00</b>	
<b>Total 1000 Instruction</b>	<b>\$49,958,858.73</b>	

LEA : 103028302     Shaler Area SD

Printed 12/4/2019 5:06:27 PM

<b>General Fund (10)</b>				
<b>1100 Regular Programs – Elementary / Secondary</b>	<u><b>Elementary</b></u>	<u><b>Secondary</b></u>	<u><b>Federal</b></u>	<u><b>Total</b></u>
<b>100 <u>Personnel Services – Salaries</u></b>				
100 Personnel Services – Salaries	9,412,159.37	9,939,394.12	95,608.20	19,447,161.69
<b>Total Personnel Services – Salaries</b>	<b>\$9,412,159.37</b>	<b>\$9,939,394.12</b>	<b>\$95,608.20</b>	<b>\$19,447,161.69</b>
<b>200 <u>Personnel Services – Employee Benefits</u></b>				
210 Group Insurance – Contracted Provider	1,842,239.04	2,060,395.01	10,388.93	3,913,022.98
220 Social Security Contributions	709,120.09	747,239.21	8,286.60	1,464,645.90
230 PSERS Retirement Contributions	3,173,650.63	3,457,227.41	9,324.74	6,640,202.78
250 Unemployment Compensation		9,470.80		9,470.80
260 Workers' Compensation	94,473.10	19,493.29	1,093.57	115,059.96
280 Other Post-Employment Benefits (OPEB)	12,953.72	17,008.64		29,962.36
<b>Total Personnel Services – Employee Benefits</b>	<b>\$5,832,436.58</b>	<b>\$6,310,834.36</b>	<b>\$29,093.84</b>	<b>\$12,172,364.78</b>
<b>300 <u>Purchased Professional and Technical Services</u></b>				
322 Professional Educational Services – Ius	2,189.00	375.00		2,564.00
323 Professional Educational Services – Other Educational Agencies	3,634.00		2,450.32	6,084.32
<b>Total Purchased Professional and Technical Services</b>	<b>\$5,823.00</b>	<b>\$375.00</b>	<b>\$2,450.32</b>	<b>\$8,648.32</b>
<b>400 <u>Purchased Property Services</u></b>				
430 Repairs and Maintenance Services	8,193.13	26,137.62		34,330.75
<b>Total Purchased Property Services</b>	<b>\$8,193.13</b>	<b>\$26,137.62</b>		<b>\$34,330.75</b>
<b>500 <u>Other Purchased Services</u></b>				
510 Student Transportation Services	221.51			221.51
562 Tuition To Pennsylvania Charter Schools	140,582.20	755,067.28		895,649.48
568 Tuition To Private Residential Rehabilitative Institutions (PRRI) [In-State] and Detention Centers		29,868.76		29,868.76
580 Travel	2,266.58	253.73		2,520.31
599 Other Miscellaneous Purchased Services		901.66		901.66
<b>Total Other Purchased Services</b>	<b>\$143,070.29</b>	<b>\$786,091.43</b>		<b>\$929,161.72</b>
<b>600 <u>Supplies</u></b>				
610 General Supplies	137,954.76	150,076.90	4,609.00	292,640.66
640 Books and Periodicals	461,573.84	60,199.44		521,773.28
650 Supplies & Fees – Technology Related	73,574.86	121,923.03		195,497.89
<b>Total Supplies</b>	<b>\$673,103.46</b>	<b>\$332,199.37</b>	<b>\$4,609.00</b>	<b>\$1,009,911.83</b>
<b>700 <u>Property</u></b>				
752 Capital Equipment – Original and Additional	236.00	36,894.08		37,130.08
758 Capitalized Technology Software - Original	123,116.59	39,709.00	11,228.98	174,054.57
762 Capitalized Equipment - Replacement		14,526.21		14,526.21
768 Capitalized Technology Software - Replacement	43,204.29	49,996.39		93,200.68
<b>Total Property</b>	<b>\$166,556.88</b>	<b>\$141,125.68</b>	<b>\$11,228.98</b>	<b>\$318,911.54</b>
<b>800 <u>Other Objects</u></b>				
810 Dues and Fees			204.00	204.00
<b>Total Other Objects</b>			<b>\$204.00</b>	<b>\$204.00</b>
<b>Total 1100 Regular Programs – Elementary / Secondary</b>	<b>\$16,241,342.71</b>	<b>\$17,536,157.58</b>	<b>\$143,194.34</b>	<b>\$33,920,694.63</b>

LEA : 103028302      Shaler Area SD

Printed 12/4/2019 5:06:27 PM

General Fund (10)

1110 Regular Programs	Elementary	Secondary	Federal	Total
<b>100 <u>Personnel Services – Salaries</u></b>				
100 Personnel Services – Salaries	9,412,159.37	9,939,394.12	756.00	19,352,309.49
<b>Total Personnel Services – Salaries</b>	<b>\$9,412,159.37</b>	<b>\$9,939,394.12</b>	<b>\$756.00</b>	<b>\$19,352,309.49</b>
<b>200 <u>Personnel Services – Employee Benefits</u></b>				
210 Group Insurance – Contracted Provider	1,842,239.04	2,060,395.01		3,902,634.05
220 Social Security Contributions	709,120.09	747,239.21	56.42	1,456,415.72
230 PSERS Retirement Contributions	3,173,650.63	3,457,227.41	252.72	6,631,130.76
250 Unemployment Compensation		9,470.80		9,470.80
260 Workers' Compensation	94,473.10	19,493.29	7.56	113,973.95
280 Other Post-Employment Benefits (OPEB)	12,953.72	17,008.64		29,962.36
<b>Total Personnel Services – Employee Benefits</b>	<b>\$5,832,436.58</b>	<b>\$6,310,834.36</b>	<b>\$316.70</b>	<b>\$12,143,587.64</b>
<b>300 <u>Purchased Professional and Technical Services</u></b>				
322 Professional Educational Services – Ius	2,189.00	375.00		2,564.00
323 Professional Educational Services – Other Educational Agencies	3,634.00			3,634.00
<b>Total Purchased Professional and Technical Services</b>	<b>\$5,823.00</b>	<b>\$375.00</b>		<b>\$6,198.00</b>
<b>400 <u>Purchased Property Services</u></b>				
430 Repairs and Maintenance Services	8,193.13	26,137.62		34,330.75
<b>Total Purchased Property Services</b>	<b>\$8,193.13</b>	<b>\$26,137.62</b>		<b>\$34,330.75</b>
<b>500 <u>Other Purchased Services</u></b>				
510 Student Transportation Services	221.51			221.51
562 Tuition To Pennsylvania Charter Schools	140,582.20	755,067.28		895,649.48
568 Tuition To Private Residential Rehabilitative Institutions (PRRI) [In-State] and Detention Centers		29,868.76		29,868.76
580 Travel	2,266.58	253.73		2,520.31
599 Other Miscellaneous Purchased Services		901.66		901.66
<b>Total Other Purchased Services</b>	<b>\$143,070.29</b>	<b>\$786,091.43</b>		<b>\$929,161.72</b>
<b>600 <u>Supplies</u></b>				
610 General Supplies	137,954.76	150,076.90	4,549.00	292,580.66
640 Books and Periodicals	461,573.84	60,199.44		521,773.28
650 Supplies & Fees – Technology Related	73,574.86	121,923.03		195,497.89
<b>Total Supplies</b>	<b>\$673,103.46</b>	<b>\$332,199.37</b>	<b>\$4,549.00</b>	<b>\$1,009,851.83</b>
<b>700 <u>Property</u></b>				
752 Capital Equipment – Original and Additional	236.00	36,894.08		37,130.08
758 Capitalized Technology Software - Original	123,116.59	39,709.00		162,825.59
762 Capitalized Equipment - Replacement		14,526.21		14,526.21
768 Capitalized Technology Software - Replacement	43,204.29	49,996.39		93,200.68
<b>Total Property</b>	<b>\$166,556.88</b>	<b>\$141,125.68</b>		<b>\$307,682.56</b>
<b>Total 1110 Regular Programs</b>	<b>\$16,241,342.71</b>	<b>\$17,536,157.58</b>	<b>\$5,621.70</b>	<b>\$33,783,121.99</b>

LEA : 103028302     Shaler Area SD

Printed 12/4/2019 5:06:27 PM

General Fund (10)				
1190 Federally-Funded Regular Programs	<u>Elementary</u>	<u>Secondary</u>	<u>Federal</u>	<u>Total</u>
100 <u>Personnel Services – Salaries</u>				
100 Personnel Services – Salaries			94,852.20	94,852.20
Total Personnel Services – Salaries			\$94,852.20	\$94,852.20
200 <u>Personnel Services – Employee Benefits</u>				
210 Group Insurance – Contracted Provider			10,388.93	10,388.93
220 Social Security Contributions			8,230.18	8,230.18
230 PSERS Retirement Contributions			9,072.02	9,072.02
260 Workers' Compensation			1,086.01	1,086.01
Total Personnel Services – Employee Benefits			\$28,777.14	\$28,777.14
300 <u>Purchased Professional and Technical Services</u>				
323 Professional Educational Services – Other Educational Agencies			2,450.32	2,450.32
Total Purchased Professional and Technical Services			\$2,450.32	\$2,450.32
600 <u>Supplies</u>				
610 General Supplies			60.00	60.00
Total Supplies			\$60.00	\$60.00
700 <u>Property</u>				
758 Capitalized Technology Software - Original			11,228.98	11,228.98
Total Property			\$11,228.98	\$11,228.98
800 <u>Other Objects</u>				
810 Dues and Fees			204.00	204.00
Total Other Objects			\$204.00	\$204.00
Total 1190 Federally-Funded Regular Programs			\$137,572.64	\$137,572.64

LEA : 103028302     Shaler Area SD

Printed 12/4/2019 5:06:27 PM

General Fund (10)

1200 Special Programs – Elementary / Secondary	Elementary	Secondary	Federal	Total
<b>100 Personnel Services – Salaries</b>				
100 Personnel Services – Salaries	2,964,754.14	2,313,188.69	605,688.67	5,883,631.50
<b>Total Personnel Services – Salaries</b>	<b>\$2,964,754.14</b>	<b>\$2,313,188.69</b>	<b>\$605,688.67</b>	<b>\$5,883,631.50</b>
<b>200 Personnel Services – Employee Benefits</b>				
210 Group Insurance – Contracted Provider	884,875.56	630,868.59	166,776.08	1,682,520.23
220 Social Security Contributions	225,918.34	194,942.15	22,931.19	443,791.68
230 PSERS Retirement Contributions	992,125.95	895,083.74	73,798.64	1,961,008.33
260 Workers' Compensation	30,218.29	22,957.49	6,193.02	59,368.80
280 Other Post-Employment Benefits (OPEB)	8,618.12	2,717.78		11,335.90
<b>Total Personnel Services – Employee Benefits</b>	<b>\$2,141,756.26</b>	<b>\$1,746,569.75</b>	<b>\$269,698.93</b>	<b>\$4,158,024.94</b>
<b>300 Purchased Professional and Technical Services</b>				
322 Professional Educational Services – lus	357,911.04	298,709.65	392.43	657,013.12
323 Professional Educational Services – Other Educational Agencies	21,310.08	171,171.84		192,481.92
329 Professional Educational Services – Other	20,855.00	2,845.00		23,700.00
330 Other Professional Services	1,800.00	1,800.00	400.00	4,000.00
<b>Total Purchased Professional and Technical Services</b>	<b>\$401,876.12</b>	<b>\$474,526.49</b>	<b>\$792.43</b>	<b>\$877,195.04</b>
<b>500 Other Purchased Services</b>				
510 Student Transportation Services	961.22	8,831.14		9,792.36
561 Tuition To Other School Districts Within the State	19,960.00	81,569.20		101,529.20
562 Tuition To Pennsylvania Charter Schools	245,428.59	576,600.91		822,029.50
563 Tuition To Nonpublic Schools	42,332.00	89,090.01		131,422.01
567 Tuition To Approved Private Schools (APS) and PA Chartered Schools for the Deaf and Blind	483,739.91	541,531.11		1,025,271.02
568 Tuition To Private Residential Rehabilitative Institutions (PRRI) [In-State] and Detention Centers	25,108.64	89,365.58		114,474.22
569 Tuition – Other	518.70	28,830.00		29,348.70
580 Travel	1,167.53	411.29		1,578.82
591 Services Purchased Locally			538.22	538.22
594 IU Payment By Withholding for Institutionalized Children's Programs – Special Classes	7,221.18	7,221.19		14,442.37
<b>Total Other Purchased Services</b>	<b>\$826,437.77</b>	<b>\$1,423,450.43</b>	<b>\$538.22</b>	<b>\$2,250,426.42</b>
<b>600 Supplies</b>				
610 General Supplies	16,569.56	21,758.51	292.15	38,620.22
640 Books and Periodicals		10,750.50		10,750.50
650 Supplies & Fees – Technology Related			876.14	876.14
<b>Total Supplies</b>	<b>\$16,569.56</b>	<b>\$32,509.01</b>	<b>\$1,168.29</b>	<b>\$50,246.86</b>
<b>700 Property</b>				
752 Capital Equipment – Original and Additional	12,928.65	11,987.07		24,915.72
<b>Total Property</b>	<b>\$12,928.65</b>	<b>\$11,987.07</b>		<b>\$24,915.72</b>
<b>800 Other Objects</b>				
810 Dues and Fees		1,915.00	2,334.00	4,249.00
<b>Total Other Objects</b>		<b>\$1,915.00</b>	<b>\$2,334.00</b>	<b>\$4,249.00</b>
<b>Total 1200 Special Programs – Elementary / Secondary</b>	<b>\$6,364,322.50</b>	<b>\$6,004,146.44</b>	<b>\$880,220.54</b>	<b>\$13,248,689.48</b>

LEA : 103028302     Shaler Area SD

Printed 12/4/2019 5:06:27 PM

<b>General Fund (10)</b>				
<b>1210 Life Skills Support</b>	<b><u>Elementary</u></b>	<b><u>Secondary</u></b>	<b><u>Federal</u></b>	<b><u>Total</u></b>
<b>100 <u>Personnel Services – Salaries</u></b>				
100 Personnel Services – Salaries		291,318.25	38,153.38	329,471.63
<b>Total Personnel Services – Salaries</b>		<b>\$291,318.25</b>	<b>\$38,153.38</b>	<b>\$329,471.63</b>
<b>200 <u>Personnel Services – Employee Benefits</u></b>				
210 Group Insurance – Contracted Provider	(788.46)	105,699.27	9,212.40	114,123.21
220 Social Security Contributions		21,886.07	2,662.43	24,548.50
230 PSERS Retirement Contributions	(1,020.37)	103,203.80	7,652.79	109,836.22
260 Workers' Compensation		2,903.51	391.22	3,294.73
<b>Total Personnel Services – Employee Benefits</b>	<b>(\$1,808.83)</b>	<b>\$233,692.65</b>	<b>\$19,918.84</b>	<b>\$251,802.66</b>
<b>300 <u>Purchased Professional and Technical Services</u></b>				
322 Professional Educational Services – lus	59,062.00	51,077.96		110,139.96
<b>Total Purchased Professional and Technical Services</b>	<b>\$59,062.00</b>	<b>\$51,077.96</b>		<b>\$110,139.96</b>
<b>500 <u>Other Purchased Services</u></b>				
561 Tuition To Other School Districts Within the State		36,000.00		36,000.00
563 Tuition To Nonpublic Schools	42,332.00	89,090.01		131,422.01
569 Tuition – Other		11,805.00		11,805.00
580 Travel		30.52		30.52
<b>Total Other Purchased Services</b>	<b>\$42,332.00</b>	<b>\$136,925.53</b>		<b>\$179,257.53</b>
<b>600 <u>Supplies</u></b>				
610 General Supplies	1,000.00	10,891.36		11,891.36
<b>Total Supplies</b>	<b>\$1,000.00</b>	<b>\$10,891.36</b>		<b>\$11,891.36</b>
<b>700 <u>Property</u></b>				
752 Capital Equipment – Original and Additional		11,987.07		11,987.07
<b>Total Property</b>		<b>\$11,987.07</b>		<b>\$11,987.07</b>
<b>800 <u>Other Objects</u></b>				
810 Dues and Fees		200.00		200.00
<b>Total Other Objects</b>		<b>\$200.00</b>		<b>\$200.00</b>
<b>Total 1210 Life Skills Support</b>	<b>\$100,585.17</b>	<b>\$736,092.82</b>	<b>\$58,072.22</b>	<b>\$894,750.21</b>

LEA : 103028302     Shaler Area SD

Printed 12/4/2019 5:06:27 PM

General Fund (10)				
1220 Sensory Support	<u>Elementary</u>	<u>Secondary</u>	<u>Federal</u>	<u>Total</u>
100 <u>Personnel Services – Salaries</u>				
100 Personnel Services – Salaries	321,919.82	73,522.26		395,442.08
<b>Total Personnel Services – Salaries</b>	<b>\$321,919.82</b>	<b>\$73,522.26</b>		<b>\$395,442.08</b>
200 <u>Personnel Services – Employee Benefits</u>				
210 Group Insurance – Contracted Provider	77,651.02	20,691.98		98,343.00
220 Social Security Contributions	24,130.05	5,492.86		29,622.91
230 PSERS Retirement Contributions	107,617.96	24,578.55		132,196.51
260 Workers' Compensation	3,219.10	735.26		3,954.36
<b>Total Personnel Services – Employee Benefits</b>	<b>\$212,618.13</b>	<b>\$51,498.65</b>		<b>\$264,116.78</b>
300 <u>Purchased Professional and Technical Services</u>				
322 Professional Educational Services – Ius	106,119.09	54,026.02		160,145.11
323 Professional Educational Services – Other Educational Agencies		53,484.00		53,484.00
330 Other Professional Services			400.00	400.00
<b>Total Purchased Professional and Technical Services</b>	<b>\$106,119.09</b>	<b>\$107,510.02</b>	<b>\$400.00</b>	<b>\$214,029.11</b>
500 <u>Other Purchased Services</u>				
580 Travel	218.71	11.45		230.16
<b>Total Other Purchased Services</b>	<b>\$218.71</b>	<b>\$11.45</b>		<b>\$230.16</b>
600 <u>Supplies</u>				
610 General Supplies			292.15	292.15
<b>Total Supplies</b>			<b>\$292.15</b>	<b>\$292.15</b>
700 <u>Property</u>				
752 Capital Equipment – Original and Additional	327.00			327.00
<b>Total Property</b>	<b>\$327.00</b>			<b>\$327.00</b>
800 <u>Other Objects</u>				
810 Dues and Fees			2,334.00	2,334.00
<b>Total Other Objects</b>			<b>\$2,334.00</b>	<b>\$2,334.00</b>
<b>Total 1220 Sensory Support</b>	<b>\$641,202.75</b>	<b>\$232,542.38</b>	<b>\$3,026.15</b>	<b>\$876,771.28</b>

LEA : 103028302      Shaler Area SD

Printed 12/4/2019 5:06:27 PM

General Fund (10)

1230 Emotional Support

	Elementary	Secondary	Federal	Total
<b>100 <u>Personnel Services – Salaries</u></b>				
100 Personnel Services – Salaries	30,747.88	382,372.68		413,120.56
<b>Total Personnel Services – Salaries</b>	<b>\$30,747.88</b>	<b>\$382,372.68</b>		<b>\$413,120.56</b>
<b>200 <u>Personnel Services – Employee Benefits</u></b>				
210 Group Insurance – Contracted Provider	17,971.44	94,846.45		112,817.89
220 Social Security Contributions	2,260.41	28,680.37		30,940.78
230 PSERS Retirement Contributions	10,146.77	127,191.29		137,338.06
260 Workers' Compensation	307.55	3,823.70		4,131.25
<b>Total Personnel Services – Employee Benefits</b>	<b>\$30,686.17</b>	<b>\$254,541.81</b>		<b>\$285,227.98</b>
<b>300 <u>Purchased Professional and Technical Services</u></b>				
322 Professional Educational Services – Ius	50,369.88	48,946.41		99,316.29
323 Professional Educational Services – Other Educational Agencies	21,310.08	117,687.84		138,997.92
<b>Total Purchased Professional and Technical Services</b>	<b>\$71,679.96</b>	<b>\$166,634.25</b>		<b>\$238,314.21</b>
<b>500 <u>Other Purchased Services</u></b>				
561 Tuition To Other School Districts Within the State	19,960.00	(5,211.80)		14,748.20
567 Tuition To Approved Private Schools (APS) and PA Chartered Schools for the Deaf and Blind		160,089.88		160,089.88
568 Tuition To Private Residential Rehabilitative Institutions (PRRI) [In-State] and Detention Centers	25,108.64	83,270.31		108,378.95
569 Tuition – Other	518.70	2,700.00		3,218.70
591 Services Purchased Locally			538.22	538.22
<b>Total Other Purchased Services</b>	<b>\$45,587.34</b>	<b>\$240,848.39</b>	<b>\$538.22</b>	<b>\$286,973.95</b>
<b>600 <u>Supplies</u></b>				
610 General Supplies		43.97		43.97
<b>Total Supplies</b>		<b>\$43.97</b>		<b>\$43.97</b>
<b>Total 1230 Emotional Support</b>	<b>\$178,701.35</b>	<b>\$1,044,441.10</b>	<b>\$538.22</b>	<b>\$1,223,680.67</b>



LEA : 103028302     Shaler Area SD

Printed 12/4/2019 5:06:27 PM

General Fund (10)

1240 Academic Support

	Elementary	Secondary	Federal	Total
<b>100 <u>Personnel Services – Salaries</u></b>				
100 Personnel Services – Salaries	2,518,407.65	1,528,000.27	567,535.29	4,613,943.21
<b>Total Personnel Services – Salaries</b>	<b>\$2,518,407.65</b>	<b>\$1,528,000.27</b>	<b>\$567,535.29</b>	<b>\$4,613,943.21</b>
<b>200 <u>Personnel Services – Employee Benefits</u></b>				
210 Group Insurance – Contracted Provider	778,641.49	396,204.26	127,677.72	1,302,523.47
220 Social Security Contributions	192,471.32	136,065.22	20,268.76	348,805.30
230 PSERS Retirement Contributions	844,074.78	627,471.05	66,145.85	1,537,691.68
260 Workers' Compensation	25,754.82	15,115.28	5,801.80	46,671.90
280 Other Post-Employment Benefits (OPEB)	8,618.12	2,717.78		11,335.90
<b>Total Personnel Services – Employee Benefits</b>	<b>\$1,849,560.53</b>	<b>\$1,177,573.59</b>	<b>\$219,894.13</b>	<b>\$3,247,028.25</b>
<b>500 <u>Other Purchased Services</u></b>				
510 Student Transportation Services	961.22	7,511.14		8,472.36
562 Tuition To Pennsylvania Charter Schools	245,428.59	576,600.91		822,029.50
568 Tuition To Private Residential Rehabilitative Institutions (PRRI) [In-State] and Detention Centers		3,194.10		3,194.10
580 Travel	948.82	369.32		1,318.14
<b>Total Other Purchased Services</b>	<b>\$247,338.63</b>	<b>\$587,675.47</b>		<b>\$835,014.10</b>
<b>600 <u>Supplies</u></b>				
610 General Supplies	10,181.99	8,391.38		18,573.37
640 Books and Periodicals		10,750.50		10,750.50
<b>Total Supplies</b>	<b>\$10,181.99</b>	<b>\$19,141.88</b>		<b>\$29,323.87</b>
<b>700 <u>Property</u></b>				
752 Capital Equipment – Original and Additional	12,601.65			12,601.65
<b>Total Property</b>	<b>\$12,601.65</b>			<b>\$12,601.65</b>
<b>800 <u>Other Objects</u></b>				
810 Dues and Fees		1,715.00		1,715.00
<b>Total Other Objects</b>		<b>\$1,715.00</b>		<b>\$1,715.00</b>
<b>Total 1240 Academic Support</b>	<b>\$4,638,090.45</b>	<b>\$3,314,106.21</b>	<b>\$787,429.42</b>	<b>\$8,739,626.08</b>

LEA : 103028302     Shaler Area SD

Printed 12/4/2019 5:06:27 PM

General Fund (10)

1241 Learning Support – Public	Elementary	Secondary	Federal	Total
100 <u>Personnel Services – Salaries</u>				
100 Personnel Services – Salaries	2,366,493.05	1,176,407.52	567,535.29	4,110,435.86
<b>Total Personnel Services – Salaries</b>	<b>\$2,366,493.05</b>	<b>\$1,176,407.52</b>	<b>\$567,535.29</b>	<b>\$4,110,435.86</b>
200 <u>Personnel Services – Employee Benefits</u>				
210 Group Insurance – Contracted Provider	740,034.28	321,267.53	127,677.72	1,188,979.53
220 Social Security Contributions	181,100.31	109,728.78	20,268.76	311,097.85
230 PSERS Retirement Contributions	793,296.58	510,017.26	66,145.85	1,369,459.69
260 Workers' Compensation	24,235.61	11,599.27	5,801.80	41,636.68
280 Other Post-Employment Benefits (OPEB)	8,618.12	2,717.78		11,335.90
<b>Total Personnel Services – Employee Benefits</b>	<b>\$1,747,284.90</b>	<b>\$955,330.62</b>	<b>\$219,894.13</b>	<b>\$2,922,509.65</b>
500 <u>Other Purchased Services</u>				
562 Tuition To Pennsylvania Charter Schools	245,428.59	576,600.91		822,029.50
580 Travel	394.60	369.32		763.92
<b>Total Other Purchased Services</b>	<b>\$245,823.19</b>	<b>\$576,970.23</b>		<b>\$822,793.42</b>
600 <u>Supplies</u>				
610 General Supplies	9,423.07	8,286.77		17,709.84
640 Books and Periodicals		10,545.00		10,545.00
<b>Total Supplies</b>	<b>\$9,423.07</b>	<b>\$18,831.77</b>		<b>\$28,254.84</b>
700 <u>Property</u>				
752 Capital Equipment – Original and Additional	12,601.65			12,601.65
<b>Total Property</b>	<b>\$12,601.65</b>			<b>\$12,601.65</b>
<b>Total 1241 Learning Support – Public</b>	<b>\$4,381,625.86</b>	<b>\$2,727,540.14</b>	<b>\$787,429.42</b>	<b>\$7,896,595.42</b>

LEA : 103028302     Shaler Area SD

Printed 12/4/2019 5:06:27 PM

General Fund (10)

1242 Learning Support – PRRI

<u>Elementary</u>	<u>Secondary</u>	<u>Federal</u>	<u>Total</u>
-------------------	------------------	----------------	--------------

500 Other Purchased Services

568 Tuition To Private Residential Rehabilitative Institutions (PRRI) [In-State] and Detention Centers	3,194.10		3,194.10
--	----------	--	----------

<b>Total Other Purchased Services</b>	<b>\$3,194.10</b>		<b>\$3,194.10</b>
---------------------------------------	-------------------	--	-------------------

<b>Total 1242 Learning Support – PRRI</b>	<b>\$3,194.10</b>		<b>\$3,194.10</b>
---	-------------------	--	-------------------

LEA : 103028302     Shaler Area SD

Printed 12/4/2019 5:06:27 PM

General Fund (10)				
1243 Gifted Support	<u>Elementary</u>	<u>Secondary</u>	<u>Federal</u>	<u>Total</u>
100 <u>Personnel Services – Salaries</u>				
100 Personnel Services – Salaries	151,914.60	351,592.75		503,507.35
<b>Total Personnel Services – Salaries</b>	<b>\$151,914.60</b>	<b>\$351,592.75</b>		<b>\$503,507.35</b>
200 <u>Personnel Services – Employee Benefits</u>				
210 Group Insurance – Contracted Provider	38,607.21	74,936.73		113,543.94
220 Social Security Contributions	11,371.01	26,336.44		37,707.45
230 PSERS Retirement Contributions	50,778.20	117,453.79		168,231.99
260 Workers' Compensation	1,519.21	3,516.01		5,035.22
<b>Total Personnel Services – Employee Benefits</b>	<b>\$102,275.63</b>	<b>\$222,242.97</b>		<b>\$324,518.60</b>
500 <u>Other Purchased Services</u>				
510 Student Transportation Services	961.22	7,511.14		8,472.36
580 Travel	554.22			554.22
<b>Total Other Purchased Services</b>	<b>\$1,515.44</b>	<b>\$7,511.14</b>		<b>\$9,026.58</b>
600 <u>Supplies</u>				
610 General Supplies	758.92	104.61		863.53
640 Books and Periodicals		205.50		205.50
<b>Total Supplies</b>	<b>\$758.92</b>	<b>\$310.11</b>		<b>\$1,069.03</b>
800 <u>Other Objects</u>				
810 Dues and Fees		1,715.00		1,715.00
<b>Total Other Objects</b>		<b>\$1,715.00</b>		<b>\$1,715.00</b>
<b>Total 1243 Gifted Support</b>	<b>\$256,464.59</b>	<b>\$583,371.97</b>		<b>\$839,836.56</b>

LEA : 103028302     Shaler Area SD

Printed 12/4/2019 5:06:27 PM

General Fund (10)

1260 Physical Support

	<u>Elementary</u>	<u>Secondary</u>	<u>Federal</u>	<u>Total</u>
300 <u>Purchased Professional and Technical Services</u>				
322 Professional Educational Services – lus	103,540.23	125,622.95		229,163.18
Total Purchased Professional and Technical Services	\$103,540.23	\$125,622.95		\$229,163.18
Total 1260 Physical Support	\$103,540.23	\$125,622.95		\$229,163.18

LEA : 103028302     Shaler Area SD

Printed 12/4/2019 5:06:27 PM

General Fund (10)

1270 Multi-Handicapped Support	<u>Elementary</u>	<u>Secondary</u>	<u>Federal</u>	<u>Total</u>
500 <u>Other Purchased Services</u>				
567 Tuition To Approved Private Schools (APS) and PA Chartered Schools for the Deaf and Blind	102,298.68			102,298.68
Total Other Purchased Services	\$102,298.68			\$102,298.68
Total 1270 Multi-Handicapped Support	\$102,298.68			\$102,298.68

LEA : 103028302     Shaler Area SD

Printed 12/4/2019 5:06:27 PM

General Fund (10)				
1280 Early Intervention Support	<u>Elementary</u>	<u>Secondary</u>	<u>Federal</u>	<u>Total</u>
300 <u>Purchased Professional and Technical Services</u>				
322 Professional Educational Services – lus	8,061.07			8,061.07
Total Purchased Professional and Technical Services	\$8,061.07			\$8,061.07
Total 1280 Early Intervention Support	\$8,061.07			\$8,061.07

LEA : 103028302     Shaler Area SD

Printed 12/4/2019 5:06:27 PM

General Fund (10)

1290 Special Programs - Other Support	Elementary	Secondary	Federal	Total
<b>100 Personnel Services – Salaries</b>				
100 Personnel Services – Salaries	93,678.79	37,975.23		131,654.02
<b>Total Personnel Services – Salaries</b>	<b>\$93,678.79</b>	<b>\$37,975.23</b>		<b>\$131,654.02</b>
<b>200 Personnel Services – Employee Benefits</b>				
210 Group Insurance – Contracted Provider	11,400.07	13,426.63	29,885.96	54,712.66
220 Social Security Contributions	7,056.56	2,817.63		9,874.19
230 PSERS Retirement Contributions	31,306.81	12,639.05		43,945.86
260 Workers' Compensation	936.82	379.74		1,316.56
<b>Total Personnel Services – Employee Benefits</b>	<b>\$50,700.26</b>	<b>\$29,263.05</b>	<b>\$29,885.96</b>	<b>\$109,849.27</b>
<b>300 Purchased Professional and Technical Services</b>				
322 Professional Educational Services – Ius	30,758.77	19,036.31	392.43	50,187.51
329 Professional Educational Services – Other	20,855.00	2,845.00		23,700.00
330 Other Professional Services	1,800.00	1,800.00		3,600.00
<b>Total Purchased Professional and Technical Services</b>	<b>\$53,413.77</b>	<b>\$23,681.31</b>	<b>\$392.43</b>	<b>\$77,487.51</b>
<b>500 Other Purchased Services</b>				
510 Student Transportation Services		1,320.00		1,320.00
561 Tuition To Other School Districts Within the State		50,781.00		50,781.00
567 Tuition To Approved Private Schools (APS) and PA Chartered Schools for the Deaf and Blind	381,441.23	381,441.23		762,882.46
568 Tuition To Private Residential Rehabilitative Institutions (PRRI) [In-State] and Detention Centers		2,901.17		2,901.17
569 Tuition – Other		14,325.00		14,325.00
594 IU Payment By Withholding for Institutionalized Children’s Programs – Special Classes	7,221.18	7,221.19		14,442.37
<b>Total Other Purchased Services</b>	<b>\$388,662.41</b>	<b>\$457,989.59</b>		<b>\$846,652.00</b>
<b>600 Supplies</b>				
610 General Supplies	5,387.57	2,431.80		7,819.37
650 Supplies & Fees – Technology Related			876.14	876.14
<b>Total Supplies</b>	<b>\$5,387.57</b>	<b>\$2,431.80</b>	<b>\$876.14</b>	<b>\$8,695.51</b>
<b>Total 1290 Special Programs - Other Support</b>	<b>\$591,842.80</b>	<b>\$551,340.98</b>	<b>\$31,154.53</b>	<b>\$1,174,338.31</b>



LEA : 103028302     Shaler Area SD

Printed 12/4/2019 5:06:27 PM

General Fund (10)

1300 Vocational Education

	<u>Elementary</u>	<u>Secondary</u>	<u>Federal</u>	<u>Total</u>
<b>100 <u>Personnel Services – Salaries</u></b>				
100 Personnel Services – Salaries		59,522.00		59,522.00
<b>Total Personnel Services – Salaries</b>		<b>\$59,522.00</b>		<b>\$59,522.00</b>
<b>200 <u>Personnel Services – Employee Benefits</u></b>				
210 Group Insurance – Contracted Provider		82.89		82.89
220 Social Security Contributions		4,553.58		4,553.58
230 PSERS Retirement Contributions		19,898.29		19,898.29
260 Workers' Compensation		595.16		595.16
<b>Total Personnel Services – Employee Benefits</b>		<b>\$25,129.92</b>		<b>\$25,129.92</b>
<b>500 <u>Other Purchased Services</u></b>				
564 Tuition To Career and Technology Centers		1,492,431.81		1,492,431.81
<b>Total Other Purchased Services</b>		<b>\$1,492,431.81</b>		<b>\$1,492,431.81</b>
<b>Total 1300 Vocational Education</b>		<b>\$1,577,083.73</b>		<b>\$1,577,083.73</b>

LEA : 103028302      Shaler Area SD

Printed 12/4/2019 5:06:27 PM

<b>General Fund (10)</b>				
<b>1400 Other Instructional Programs – Elementary / Secondary</b>	<b><u>Elementary</u></b>	<b><u>Secondary</u></b>	<b><u>Federal</u></b>	<b><u>Total</u></b>
<b>100 <u>Personnel Services – Salaries</u></b>				
100 Personnel Services – Salaries	18,184.50	352,318.22	272,223.39	642,726.11
<b>Total Personnel Services – Salaries</b>	<b>\$18,184.50</b>	<b>\$352,318.22</b>	<b>\$272,223.39</b>	<b>\$642,726.11</b>
<b>200 <u>Personnel Services – Employee Benefits</u></b>				
210 Group Insurance – Contracted Provider		86,084.09	66,044.14	152,128.23
220 Social Security Contributions	1,375.51	26,312.38	20,319.32	48,007.21
230 PSERS Retirement Contributions	6,079.09	117,544.25	91,004.16	214,627.50
260 Workers' Compensation	181.86	3,522.95	2,722.00	6,426.81
<b>Total Personnel Services – Employee Benefits</b>	<b>\$7,636.46</b>	<b>\$233,463.67</b>	<b>\$180,089.62</b>	<b>\$421,189.75</b>
<b>500 <u>Other Purchased Services</u></b>				
568 Tuition To Private Residential Rehabilitative Institutions (PRRI) [In-State] and Detention Centers		136,646.52		136,646.52
<b>Total Other Purchased Services</b>		<b>\$136,646.52</b>		<b>\$136,646.52</b>
<b>600 <u>Supplies</u></b>				
610 General Supplies	532.01	532.00		1,064.01
<b>Total Supplies</b>	<b>\$532.01</b>	<b>\$532.00</b>		<b>\$1,064.01</b>
<b>Total 1400 Other Instructional Programs – Elementary / Secondary</b>	<b>\$26,352.97</b>	<b>\$722,960.41</b>	<b>\$452,313.01</b>	<b>\$1,201,626.39</b>

LEA : 103028302     Shaler Area SD

Printed 12/4/2019 5:06:27 PM

General Fund (10)

1420 Summer School	<u>Elementary</u>	<u>Secondary</u>	<u>Federal</u>	<u>Total</u>
<b>100 <u>Personnel Services – Salaries</u></b>				
100 Personnel Services – Salaries	18,184.50			18,184.50
<b>Total Personnel Services – Salaries</b>	<b>\$18,184.50</b>			<b>\$18,184.50</b>
<b>200 <u>Personnel Services – Employee Benefits</u></b>				
220 Social Security Contributions	1,375.51			1,375.51
230 PSERS Retirement Contributions	6,079.09			6,079.09
260 Workers’ Compensation	181.86			181.86
<b>Total Personnel Services – Employee Benefits</b>	<b>\$7,636.46</b>			<b>\$7,636.46</b>
<b>Total 1420 Summer School</b>	<b>\$25,820.96</b>			<b>\$25,820.96</b>

LEA : 103028302     Shaler Area SD

Printed 12/4/2019 5:06:27 PM

General Fund (10)

1430 Homebound Instruction

	<u>Elementary</u>	<u>Secondary</u>	<u>Federal</u>	<u>Total</u>
<b>100 <u>Personnel Services – Salaries</u></b>				
100 Personnel Services – Salaries		505.17		505.17
<b>Total Personnel Services – Salaries</b>		<b>\$505.17</b>		<b>\$505.17</b>
<b>200 <u>Personnel Services – Employee Benefits</u></b>				
220 Social Security Contributions		37.59		37.59
230 PSERS Retirement Contributions		168.88		168.88
260 Workers’ Compensation		5.05		5.05
<b>Total Personnel Services – Employee Benefits</b>		<b>\$211.52</b>		<b>\$211.52</b>
<b>Total 1430 Homebound Instruction</b>		<b>\$716.69</b>		<b>\$716.69</b>

LEA : 103028302     Shaler Area SD

Printed 12/4/2019 5:06:27 PM

General Fund (10)

1440 Alternative Regular Education Programs	<u>Elementary</u>	<u>Secondary</u>	<u>Federal</u>	<u>Total</u>
<b>100 <u>Personnel Services – Salaries</u></b>				
100 Personnel Services – Salaries		351,813.05		351,813.05
<b>Total Personnel Services – Salaries</b>		<b>\$351,813.05</b>		<b>\$351,813.05</b>
<b>200 <u>Personnel Services – Employee Benefits</u></b>				
210 Group Insurance – Contracted Provider		86,084.09		86,084.09
220 Social Security Contributions		26,274.79		26,274.79
230 PSERS Retirement Contributions		117,375.37		117,375.37
260 Workers' Compensation		3,517.90		3,517.90
<b>Total Personnel Services – Employee Benefits</b>		<b>\$233,252.15</b>		<b>\$233,252.15</b>
<b>500 <u>Other Purchased Services</u></b>				
568 Tuition To Private Residential Rehabilitative Institutions (PRRI) [In-State] and Detention Centers		136,646.52		136,646.52
<b>Total Other Purchased Services</b>		<b>\$136,646.52</b>		<b>\$136,646.52</b>
<b>Total 1440 Alternative Regular Education Programs</b>		<b>\$721,711.72</b>		<b>\$721,711.72</b>

LEA : 103028302     Shaler Area SD

Printed 12/4/2019 5:06:27 PM

General Fund (10)

1441 Adjudicated / Court-Placed Programs

Elementary                      Secondary                      Federal                      Total

500 Other Purchased Services

568 Tuition To Private Residential Rehabilitative Institutions (PRRI) [In-State] and Detention Centers                      1,633.39                      1,633.39

**Total Other Purchased Services                      \$1,633.39                      \$1,633.39**

**Total 1441 Adjudicated / Court-Placed Programs                      \$1,633.39                      \$1,633.39**

LEA : 103028302     Shaler Area SD

Printed 12/4/2019 5:06:27 PM

General Fund (10)

1442 Alternative Education Programs	<u>Elementary</u>	<u>Secondary</u>	<u>Federal</u>	<u>Total</u>
<b>100 <u>Personnel Services – Salaries</u></b>				
100 Personnel Services – Salaries		351,813.05		351,813.05
<b>Total Personnel Services – Salaries</b>		<b>\$351,813.05</b>		<b>\$351,813.05</b>
<b>200 <u>Personnel Services – Employee Benefits</u></b>				
210 Group Insurance – Contracted Provider		86,084.09		86,084.09
220 Social Security Contributions		26,274.79		26,274.79
230 PSERS Retirement Contributions		117,375.37		117,375.37
260 Workers' Compensation		3,517.90		3,517.90
<b>Total Personnel Services – Employee Benefits</b>		<b>\$233,252.15</b>		<b>\$233,252.15</b>
<b>500 <u>Other Purchased Services</u></b>				
568 Tuition To Private Residential Rehabilitative Institutions (PRRI) [In-State] and Detention Centers		135,013.13		135,013.13
<b>Total Other Purchased Services</b>		<b>\$135,013.13</b>		<b>\$135,013.13</b>
<b>Total 1442 Alternative Education Programs</b>		<b>\$720,078.33</b>		<b>\$720,078.33</b>

LEA : 103028302     Shaler Area SD

Printed 12/4/2019 5:06:27 PM

General Fund (10)

1490 Additional Other Instructional Programs	<u>Elementary</u>	<u>Secondary</u>	<u>Federal</u>	<u>Total</u>
100 <u>Personnel Services – Salaries</u>				
100 Personnel Services – Salaries			272,223.39	272,223.39
Total Personnel Services – Salaries			\$272,223.39	\$272,223.39
200 <u>Personnel Services – Employee Benefits</u>				
210 Group Insurance – Contracted Provider			66,044.14	66,044.14
220 Social Security Contributions			20,319.32	20,319.32
230 PSERS Retirement Contributions			91,004.16	91,004.16
260 Workers' Compensation			2,722.00	2,722.00
Total Personnel Services – Employee Benefits			\$180,089.62	\$180,089.62
600 <u>Supplies</u>				
610 General Supplies	532.01	532.00		1,064.01
Total Supplies	\$532.01	\$532.00		\$1,064.01
Total 1490 Additional Other Instructional Programs	\$532.01	\$532.00	\$452,313.01	\$453,377.02



LEA : 103028302     Shaler Area SD

Printed 12/4/2019 5:06:27 PM

General Fund (10)

1500 Nonpublic School Programs

	<u>Elementary</u>	<u>Secondary</u>	<u>Federal</u>	<u>Total</u>
300 <u>Purchased Professional and Technical Services</u>				
323 Professional Educational Services – Other Educational Agencies			10,764.50	10,764.50
<b>Total Purchased Professional and Technical Services</b>			<b>\$10,764.50</b>	<b>\$10,764.50</b>
<b>Total 1500 Nonpublic School Programs</b>			<b>\$10,764.50</b>	<b>\$10,764.50</b>

LEA : 103028302     Shaler Area SD

Printed 12/4/2019 5:06:34 PM

General Fund (10)

2000 Support Services		Total
100 <u>Personnel Services – Salaries</u>		
100 Personnel Services – Salaries		9,745,062.42
Total Personnel Services – Salaries		\$9,745,062.42
200 <u>Personnel Services – Employee Benefits</u>		
210 Group Insurance – Contracted Provider		2,128,670.45
220 Social Security Contributions		730,119.43
230 PSERS Retirement Contributions		3,206,699.01
240 Tuition Reimbursement		22,882.00
250 Unemployment Compensation		7,285.66
260 Workers' Compensation		97,360.74
280 Other Post-Employment Benefits (OPEB)		2,970.03
Total Personnel Services – Employee Benefits		\$6,195,987.32
300 <u>Purchased Professional and Technical Services</u>		
323 Professional Educational Services – Other Educational Agencies		115,838.14
330 Other Professional Services		461,258.17
340 Technical Services		10,610.00
350 Security / Safety Services		175,592.64
360 Employee Training and Development Services		214,170.60
390 Other Purchased Professional and Technical Services		1,900.00
Total Purchased Professional and Technical Services		\$979,369.55
400 <u>Purchased Property Services</u>		
410 Cleaning Services		46,377.40
420 Utility Services		131,283.77
430 Repairs and Maintenance Services		436,459.51
440 Rentals		114,240.39
Total Purchased Property Services		\$728,361.07
500 <u>Other Purchased Services</u>		
510 Student Transportation Services		8,829.92
513 Contracted Carriers		4,619,713.85
516 Student Transportation Services From the IU		206.88
520 Insurance – General		17,412.34
521 Fire Insurance		166,996.00
522 Automotive Liability Insurance		8,136.00
530 Communications		123,604.79
549 Other Advertising/Public Relations		6,801.60
580 Travel		43,505.45
591 Services Purchased Locally		274.99
595 IU Payments By Withholding		63,015.74
Total Other Purchased Services		\$5,058,497.56
600 <u>Supplies</u>		
610 General Supplies		406,038.30
620 Energy		1,226,704.78
640 Books and Periodicals		109,052.79
650 Supplies & Fees – Technology Related		340,541.37

LEA : 103028302     Shaler Area SD

Printed 12/4/2019 5:06:34 PM

General Fund (10)

2000 Support Services

	<u>Total</u>
<b>Total Supplies</b>	<b>\$2,082,337.24</b>
<b>700 <u>Property</u></b>	
752 Capital Equipment – Original and Additional	55,543.70
758 Capitalized Technology Software - Original	6,753.81
762 Capitalized Equipment - Replacement	54,204.97
768 Capitalized Technology Software - Replacement	3,834.84
<b>Total Property</b>	<b>\$120,337.32</b>
<b>800 <u>Other Objects</u></b>	
810 Dues and Fees	20,520.18
<b>Total Other Objects</b>	<b>\$20,520.18</b>
<b>Total 2000 Support Services</b>	<b>\$24,930,472.66</b>

LEA : 103028302      Shaler Area SD

Printed 12/4/2019 5:06:34 PM

General Fund (10)				
2100 Support Services – Students	<u>Elementary</u>	<u>Secondary</u>	<u>Federal</u>	<u>Total</u>
100 <u>Personnel Services – Salaries</u>				
100 Personnel Services – Salaries	747,431.26	903,689.50		2,094,890.09
<b>Total Personnel Services – Salaries</b>	<b>\$747,431.26</b>	<b>\$903,689.50</b>		<b>\$2,094,890.09</b>
200 <u>Personnel Services – Employee Benefits</u>				
210 Group Insurance – Contracted Provider	156,200.21	189,196.94	9,318.96	444,646.47
220 Social Security Contributions	56,022.42	67,813.35		157,152.12
230 PSERS Retirement Contributions	249,156.37	301,397.64		698,578.21
260 Workers' Compensation	7,474.72	9,036.73		20,949.12
<b>Total Personnel Services – Employee Benefits</b>	<b>\$468,853.72</b>	<b>\$567,444.66</b>	<b>\$9,318.96</b>	<b>\$1,321,325.92</b>
300 <u>Purchased Professional and Technical Services</u>				
330 Other Professional Services	27,266.00	16,616.00	17,500.00	61,382.00
<b>Total Purchased Professional and Technical Services</b>	<b>\$27,266.00</b>	<b>\$16,616.00</b>	<b>\$17,500.00</b>	<b>\$61,382.00</b>
500 <u>Other Purchased Services</u>				
510 Student Transportation Services		630.48	8,199.44	8,829.92
580 Travel	2,013.00	2,540.91		6,058.65
591 Services Purchased Locally		274.99		274.99
<b>Total Other Purchased Services</b>	<b>\$2,013.00</b>	<b>\$3,446.38</b>	<b>\$8,199.44</b>	<b>\$15,163.56</b>
600 <u>Supplies</u>				
610 General Supplies	11,006.76	7,415.63	500.00	18,922.39
<b>Total Supplies</b>	<b>\$11,006.76</b>	<b>\$7,415.63</b>	<b>\$500.00</b>	<b>\$18,922.39</b>
800 <u>Other Objects</u>				
810 Dues and Fees	2,107.00	75.00		2,182.00
<b>Total Other Objects</b>	<b>\$2,107.00</b>	<b>\$75.00</b>		<b>\$2,182.00</b>
<b>Total 2100 Support Services – Students</b>	<b>\$1,258,677.74</b>	<b>\$1,498,687.17</b>	<b>\$35,518.40</b>	<b>\$3,513,865.96</b>

LEA : 103028302     Shaler Area SD

Printed 12/4/2019 5:06:34 PM

General Fund (10)				
2110 Supervision of Student Services	<u>Elementary</u>	<u>Secondary</u>	<u>Federal</u>	<u>Total</u>
100 <u>Personnel Services – Salaries</u>				
100 Personnel Services – Salaries	82,237.32	82,237.08		164,474.40
<b>Total Personnel Services – Salaries</b>	<b>\$82,237.32</b>	<b>\$82,237.08</b>		<b>\$164,474.40</b>
200 <u>Personnel Services – Employee Benefits</u>				
210 Group Insurance – Contracted Provider	18,332.32	18,331.89		36,664.21
220 Social Security Contributions	6,180.98	6,180.47		12,361.45
230 PSERS Retirement Contributions	27,492.00	27,491.76		54,983.76
260 Workers' Compensation	822.53	822.30		1,644.83
<b>Total Personnel Services – Employee Benefits</b>	<b>\$52,827.83</b>	<b>\$52,826.42</b>		<b>\$105,654.25</b>
500 <u>Other Purchased Services</u>				
580 Travel	929.08	1,758.28		2,687.36
<b>Total Other Purchased Services</b>	<b>\$929.08</b>	<b>\$1,758.28</b>		<b>\$2,687.36</b>
600 <u>Supplies</u>				
610 General Supplies	4,889.31	3,009.52		7,898.83
<b>Total Supplies</b>	<b>\$4,889.31</b>	<b>\$3,009.52</b>		<b>\$7,898.83</b>
800 <u>Other Objects</u>				
810 Dues and Fees	1,687.00			1,687.00
<b>Total Other Objects</b>	<b>\$1,687.00</b>			<b>\$1,687.00</b>
<b>Total 2110 Supervision of Student Services</b>	<b>\$142,570.54</b>	<b>\$139,831.30</b>		<b>\$282,401.84</b>

LEA : 103028302      Shaler Area SD

Printed 12/4/2019 5:06:34 PM

General Fund (10)				
2111 Supervision of Student Services – Head of Component	<u>Elementary</u>	<u>Secondary</u>	<u>Federal</u>	<u>Total</u>
100 <u>Personnel Services – Salaries</u>				
100 Personnel Services – Salaries	82,237.32	82,237.08		164,474.40
<b>Total Personnel Services – Salaries</b>	<b>\$82,237.32</b>	<b>\$82,237.08</b>		<b>\$164,474.40</b>
200 <u>Personnel Services – Employee Benefits</u>				
210 Group Insurance – Contracted Provider	18,332.32	18,331.89		36,664.21
220 Social Security Contributions	6,180.98	6,180.47		12,361.45
230 PSERS Retirement Contributions	27,492.00	27,491.76		54,983.76
260 Workers' Compensation	822.53	822.30		1,644.83
<b>Total Personnel Services – Employee Benefits</b>	<b>\$52,827.83</b>	<b>\$52,826.42</b>		<b>\$105,654.25</b>
500 <u>Other Purchased Services</u>				
580 Travel	929.08	1,758.28		2,687.36
<b>Total Other Purchased Services</b>	<b>\$929.08</b>	<b>\$1,758.28</b>		<b>\$2,687.36</b>
600 <u>Supplies</u>				
610 General Supplies	4,889.31	3,009.52		7,898.83
<b>Total Supplies</b>	<b>\$4,889.31</b>	<b>\$3,009.52</b>		<b>\$7,898.83</b>
800 <u>Other Objects</u>				
810 Dues and Fees	1,687.00			1,687.00
<b>Total Other Objects</b>	<b>\$1,687.00</b>			<b>\$1,687.00</b>
<b>Total 2111 Supervision of Student Services – Head of Component</b>	<b>\$142,570.54</b>	<b>\$139,831.30</b>		<b>\$282,401.84</b>

LEA : 103028302      Shaler Area SD

Printed 12/4/2019 5:06:34 PM

General Fund (10)				
2120 Guidance Services	<u>Elementary</u>	<u>Secondary</u>	<u>Federal</u>	<u>Total</u>
100 <u>Personnel Services – Salaries</u>				
100 Personnel Services – Salaries	523,323.50	679,587.65		1,202,911.15
<b>Total Personnel Services – Salaries</b>	<b>\$523,323.50</b>	<b>\$679,587.65</b>		<b>\$1,202,911.15</b>
200 <u>Personnel Services – Employee Benefits</u>				
210 Group Insurance – Contracted Provider	108,033.97	141,044.05		249,078.02
220 Social Security Contributions	39,220.67	51,013.22		90,233.89
230 PSERS Retirement Contributions	174,841.84	227,084.06		401,925.90
260 Workers' Compensation	5,233.43	6,795.92		12,029.35
<b>Total Personnel Services – Employee Benefits</b>	<b>\$327,329.91</b>	<b>\$425,937.25</b>		<b>\$753,267.16</b>
500 <u>Other Purchased Services</u>				
510 Student Transportation Services		630.48		630.48
580 Travel		168.31		168.31
591 Services Purchased Locally		274.99		274.99
<b>Total Other Purchased Services</b>		<b>\$1,073.78</b>		<b>\$1,073.78</b>
600 <u>Supplies</u>				
610 General Supplies	725.14	529.82		1,254.96
<b>Total Supplies</b>	<b>\$725.14</b>	<b>\$529.82</b>		<b>\$1,254.96</b>
<b>Total 2120 Guidance Services</b>	<b>\$851,378.55</b>	<b>\$1,107,128.50</b>		<b>\$1,958,507.05</b>

LEA : 103028302      Shaler Area SD

Printed 12/4/2019 5:06:34 PM

<b>General Fund (10)</b>				
<b>2140 Psychological Services</b>	<b><u>Elementary</u></b>	<b><u>Secondary</u></b>	<b><u>Federal</u></b>	<b><u>Total</u></b>
<b>100 <u>Personnel Services – Salaries</u></b>				
100 Personnel Services – Salaries	141,870.44	141,864.77		283,735.21
<b>Total Personnel Services – Salaries</b>	<b>\$141,870.44</b>	<b>\$141,864.77</b>		<b>\$283,735.21</b>
<b>200 <u>Personnel Services – Employee Benefits</u></b>				
210 Group Insurance – Contracted Provider	29,833.92	29,821.00	9,318.96	68,973.88
220 Social Security Contributions	10,620.77	10,619.66		21,240.43
230 PSERS Retirement Contributions	46,822.53	46,821.82		93,644.35
260 Workers' Compensation	1,418.76	1,418.51		2,837.27
<b>Total Personnel Services – Employee Benefits</b>	<b>\$88,695.98</b>	<b>\$88,680.99</b>	<b>\$9,318.96</b>	<b>\$186,695.93</b>
<b>300 <u>Purchased Professional and Technical Services</u></b>				
330 Other Professional Services	27,266.00	16,616.00		43,882.00
<b>Total Purchased Professional and Technical Services</b>	<b>\$27,266.00</b>	<b>\$16,616.00</b>		<b>\$43,882.00</b>
<b>500 <u>Other Purchased Services</u></b>				
580 Travel	1,083.92	614.32		1,698.24
<b>Total Other Purchased Services</b>	<b>\$1,083.92</b>	<b>\$614.32</b>		<b>\$1,698.24</b>
<b>600 <u>Supplies</u></b>				
610 General Supplies	5,392.31	3,876.29		9,268.60
<b>Total Supplies</b>	<b>\$5,392.31</b>	<b>\$3,876.29</b>		<b>\$9,268.60</b>
<b>800 <u>Other Objects</u></b>				
810 Dues and Fees	420.00	75.00		495.00
<b>Total Other Objects</b>	<b>\$420.00</b>	<b>\$75.00</b>		<b>\$495.00</b>
<b>Total 2140 Psychological Services</b>	<b>\$264,728.65</b>	<b>\$251,727.37</b>	<b>\$9,318.96</b>	<b>\$525,774.98</b>



LEA : 103028302     Shaler Area SD

Printed 12/4/2019 5:06:34 PM

General Fund (10)

2160 Social Work Services	<u>Elementary</u>	<u>Secondary</u>	<u>Federal</u>	<u>Total</u>
100 <u>Personnel Services – Salaries</u>				
100 Personnel Services – Salaries				354,613.50
Total Personnel Services – Salaries				\$354,613.50
200 <u>Personnel Services – Employee Benefits</u>				
210 Group Insurance – Contracted Provider				59,514.05
220 Social Security Contributions				26,666.04
230 PSERS Retirement Contributions				118,547.46
260 Workers' Compensation				3,546.13
Total Personnel Services – Employee Benefits				\$208,273.68
500 <u>Other Purchased Services</u>				
580 Travel				1,504.74
Total Other Purchased Services				\$1,504.74
Total 2160 Social Work Services				\$564,391.92

LEA : 103028302     Shaler Area SD

Printed 12/4/2019 5:06:34 PM

General Fund (10)

2170 Student Accounting Services	<u>Elementary</u>	<u>Secondary</u>	<u>Federal</u>	<u>Total</u>
100 <u>Personnel Services – Salaries</u>				
100 Personnel Services – Salaries				89,155.83
Total Personnel Services – Salaries				\$89,155.83
200 <u>Personnel Services – Employee Benefits</u>				
210 Group Insurance – Contracted Provider				30,416.31
220 Social Security Contributions				6,650.31
230 PSERS Retirement Contributions				29,476.74
260 Workers' Compensation				891.54
Total Personnel Services – Employee Benefits				\$67,434.90
Total 2170 Student Accounting Services				\$156,590.73

LEA : 103028302      Shaler Area SD

Printed 12/4/2019 5:06:34 PM

General Fund (10)				
2190 Other Student Services	<u>Elementary</u>	<u>Secondary</u>	<u>Federal</u>	<u>Total</u>
300 <u>Purchased Professional and Technical Services</u>				
330 Other Professional Services			17,500.00	17,500.00
Total Purchased Professional and Technical Services			\$17,500.00	\$17,500.00
500 <u>Other Purchased Services</u>				
510 Student Transportation Services			8,199.44	8,199.44
Total Other Purchased Services			\$8,199.44	\$8,199.44
600 <u>Supplies</u>				
610 General Supplies			500.00	500.00
Total Supplies			\$500.00	\$500.00
Total 2190 Other Student Services			\$26,199.44	\$26,199.44

LEA : 103028302     Shaler Area SD

Printed 12/4/2019 5:06:34 PM

General Fund (10)

2200 Support Services – Instructional Staff	<u>Elementary</u>	<u>Secondary</u>	<u>Federal</u>	<u>Total</u>
100 <u>Personnel Services – Salaries</u>				
100 Personnel Services – Salaries	526,970.40	367,007.63		893,978.03
<b>Total Personnel Services – Salaries</b>	<b>\$526,970.40</b>	<b>\$367,007.63</b>		<b>\$893,978.03</b>
200 <u>Personnel Services – Employee Benefits</u>				
210 Group Insurance – Contracted Provider	100,714.51	63,221.29		163,935.80
220 Social Security Contributions	39,677.10	27,523.90		67,201.00
230 PSERS Retirement Contributions	175,757.22	122,376.60		298,133.82
260 Workers' Compensation	5,270.16	3,670.44		8,940.60
<b>Total Personnel Services – Employee Benefits</b>	<b>\$321,418.99</b>	<b>\$216,792.23</b>		<b>\$538,211.22</b>
300 <u>Purchased Professional and Technical Services</u>				
360 Employee Training and Development Services	140,603.08	19,651.15	46,000.00	206,254.23
<b>Total Purchased Professional and Technical Services</b>	<b>\$140,603.08</b>	<b>\$19,651.15</b>	<b>\$46,000.00</b>	<b>\$206,254.23</b>
500 <u>Other Purchased Services</u>				
580 Travel	2,129.01	4,373.14	1,177.35	7,679.50
<b>Total Other Purchased Services</b>	<b>\$2,129.01</b>	<b>\$4,373.14</b>	<b>\$1,177.35</b>	<b>\$7,679.50</b>
600 <u>Supplies</u>				
610 General Supplies	3,465.78	1,501.55		4,967.33
640 Books and Periodicals	65,020.80	44,031.99		109,052.79
650 Supplies & Fees – Technology Related	21,912.85	8,296.20		30,209.05
<b>Total Supplies</b>	<b>\$90,399.43</b>	<b>\$53,829.74</b>		<b>\$144,229.17</b>
700 <u>Property</u>				
758 Capitalized Technology Software - Original	1,709.00	1,643.81		3,352.81
762 Capitalized Equipment - Replacement		443.06		443.06
768 Capitalized Technology Software - Replacement	3,245.60	589.24		3,834.84
<b>Total Property</b>	<b>\$4,954.60</b>	<b>\$2,676.11</b>		<b>\$7,630.71</b>
<b>Total 2200 Support Services – Instructional Staff</b>	<b>\$1,086,475.51</b>	<b>\$664,330.00</b>	<b>\$47,177.35</b>	<b>\$1,797,982.86</b>

LEA : 103028302     Shaler Area SD

Printed 12/4/2019 5:06:34 PM

General Fund (10)

2220 Technology Support Services	<u>Elementary</u>	<u>Secondary</u>	<u>Federal</u>	<u>Total</u>
100 <u>Personnel Services – Salaries</u>				
100 Personnel Services – Salaries		5,687.00		5,687.00
<b>Total Personnel Services – Salaries</b>		<b>\$5,687.00</b>		<b>\$5,687.00</b>
200 <u>Personnel Services – Employee Benefits</u>				
220 Social Security Contributions		425.00		425.00
230 PSERS Retirement Contributions		1,901.16		1,901.16
260 Workers’ Compensation		56.87		56.87
<b>Total Personnel Services – Employee Benefits</b>		<b>\$2,383.03</b>		<b>\$2,383.03</b>
<b>Total 2220 Technology Support Services</b>		<b>\$8,070.03</b>		<b>\$8,070.03</b>

LEA : 103028302     Shaler Area SD

Printed 12/4/2019 5:06:34 PM

General Fund (10)				
2240 Computer-Assisted Instruction Support Services	<u>Elementary</u>	<u>Secondary</u>	<u>Federal</u>	<u>Total</u>
100 <u>Personnel Services – Salaries</u>				
100 Personnel Services – Salaries	12,422.98	11,374.00		23,796.98
<b>Total Personnel Services – Salaries</b>	<b>\$12,422.98</b>	<b>\$11,374.00</b>		<b>\$23,796.98</b>
200 <u>Personnel Services – Employee Benefits</u>				
220 Social Security Contributions	938.15	857.46		1,795.61
230 PSERS Retirement Contributions	4,152.97	3,802.34		7,955.31
260 Workers’ Compensation	124.08	113.74		237.82
<b>Total Personnel Services – Employee Benefits</b>	<b>\$5,215.20</b>	<b>\$4,773.54</b>		<b>\$9,988.74</b>
<b>Total 2240 Computer-Assisted Instruction Support Services</b>	<b>\$17,638.18</b>	<b>\$16,147.54</b>		<b>\$33,785.72</b>

LEA : 103028302     Shaler Area SD

Printed 12/4/2019 5:06:34 PM

<b>General Fund (10)</b>				
<b>2250 School Library Services</b>	<b><u>Elementary</u></b>	<b><u>Secondary</u></b>	<b><u>Federal</u></b>	<b><u>Total</u></b>
<b>100 <u>Personnel Services – Salaries</u></b>				
100 Personnel Services – Salaries	369,156.11	212,144.49		581,300.60
<b>Total Personnel Services – Salaries</b>	<b>\$369,156.11</b>	<b>\$212,144.49</b>		<b>\$581,300.60</b>
<b>200 <u>Personnel Services – Employee Benefits</u></b>				
210 Group Insurance – Contracted Provider	94,718.44	57,225.23		151,943.67
220 Social Security Contributions	27,734.42	15,803.22		43,537.64
230 PSERS Retirement Contributions	123,136.84	70,742.67		193,879.51
260 Workers' Compensation	3,691.77	2,121.46		5,813.23
<b>Total Personnel Services – Employee Benefits</b>	<b>\$249,281.47</b>	<b>\$145,892.58</b>		<b>\$395,174.05</b>
<b>500 <u>Other Purchased Services</u></b>				
580 Travel	285.50			285.50
<b>Total Other Purchased Services</b>	<b>\$285.50</b>			<b>\$285.50</b>
<b>600 <u>Supplies</u></b>				
610 General Supplies	3,465.78	1,501.55		4,967.33
640 Books and Periodicals	65,020.80	44,031.99		109,052.79
650 Supplies & Fees – Technology Related	21,912.85	8,296.20		30,209.05
<b>Total Supplies</b>	<b>\$90,399.43</b>	<b>\$53,829.74</b>		<b>\$144,229.17</b>
<b>700 <u>Property</u></b>				
758 Capitalized Technology Software - Original	1,000.00	934.81		1,934.81
762 Capitalized Equipment - Replacement		443.06		443.06
768 Capitalized Technology Software - Replacement	3,245.60	589.24		3,834.84
<b>Total Property</b>	<b>\$4,245.60</b>	<b>\$1,967.11</b>		<b>\$6,212.71</b>
<b>Total 2250 School Library Services</b>	<b>\$713,368.11</b>	<b>\$413,833.92</b>		<b>\$1,127,202.03</b>

LEA : 103028302     Shaler Area SD

Printed 12/4/2019 5:06:34 PM

General Fund (10)

2260 Instruction and Curriculum Development Services	<u>Elementary</u>	<u>Secondary</u>	<u>Federal</u>	<u>Total</u>
100 <u>Personnel Services – Salaries</u>				
100 Personnel Services – Salaries	145,391.31	137,802.14		283,193.45
<b>Total Personnel Services – Salaries</b>	<b>\$145,391.31</b>	<b>\$137,802.14</b>		<b>\$283,193.45</b>
200 <u>Personnel Services – Employee Benefits</u>				
210 Group Insurance – Contracted Provider	5,996.07	5,996.06		11,992.13
220 Social Security Contributions	11,004.53	10,438.22		21,442.75
230 PSERS Retirement Contributions	48,467.41	45,930.43		94,397.84
260 Workers' Compensation	1,454.31	1,378.37		2,832.68
<b>Total Personnel Services – Employee Benefits</b>	<b>\$66,922.32</b>	<b>\$63,743.08</b>		<b>\$130,665.40</b>
500 <u>Other Purchased Services</u>				
580 Travel	224.78	224.77		449.55
<b>Total Other Purchased Services</b>	<b>\$224.78</b>	<b>\$224.77</b>		<b>\$449.55</b>
700 <u>Property</u>				
758 Capitalized Technology Software - Original	709.00	709.00		1,418.00
<b>Total Property</b>	<b>\$709.00</b>	<b>\$709.00</b>		<b>\$1,418.00</b>
<b>Total 2260 Instruction and Curriculum Development Services</b>	<b>\$213,247.41</b>	<b>\$202,478.99</b>		<b>\$415,726.40</b>



LEA : 103028302     Shaler Area SD

Printed 12/4/2019 5:06:34 PM

General Fund (10)

2270 Instructional Staff Professional Development Services	<u>Elementary</u>	<u>Secondary</u>	<u>Federal</u>	<u>Total</u>
300 <u>Purchased Professional and Technical Services</u>				
360 Employee Training and Development Services	140,603.08	19,651.15	46,000.00	206,254.23
Total Purchased Professional and Technical Services	\$140,603.08	\$19,651.15	\$46,000.00	\$206,254.23
500 <u>Other Purchased Services</u>				
580 Travel	1,618.73	4,148.37	1,177.35	6,944.45
Total Other Purchased Services	\$1,618.73	\$4,148.37	\$1,177.35	\$6,944.45
Total 2270 Instructional Staff Professional Development Services	\$142,221.81	\$23,799.52	\$47,177.35	\$213,198.68

LEA : 103028302     Shaler Area SD

Printed 12/4/2019 5:06:34 PM

General Fund (10)

2300 Support Services – Administration	Elementary	Secondary	Federal	Total
100 <u>Personnel Services – Salaries</u>				
100 Personnel Services – Salaries	1,027,591.01	840,153.48		2,141,276.46
<b>Total Personnel Services – Salaries</b>	<b>\$1,027,591.01</b>	<b>\$840,153.48</b>		<b>\$2,141,276.46</b>
200 <u>Personnel Services – Employee Benefits</u>				
210 Group Insurance – Contracted Provider	241,072.89	175,516.06		458,003.79
220 Social Security Contributions	77,095.51	64,204.81		161,265.11
230 PSERS Retirement Contributions	343,226.90	280,739.85		697,244.19
260 Workers' Compensation	10,280.42	8,583.05		21,201.33
280 Other Post-Employment Benefits (OPEB)				2,970.03
<b>Total Personnel Services – Employee Benefits</b>	<b>\$671,675.72</b>	<b>\$529,043.77</b>		<b>\$1,340,684.45</b>
300 <u>Purchased Professional and Technical Services</u>				
330 Other Professional Services				246,857.15
<b>Total Purchased Professional and Technical Services</b>				<b>\$246,857.15</b>
400 <u>Purchased Property Services</u>				
440 Rentals	21,531.54	19,955.98		41,487.52
<b>Total Purchased Property Services</b>	<b>\$21,531.54</b>	<b>\$19,955.98</b>		<b>\$41,487.52</b>
500 <u>Other Purchased Services</u>				
520 Insurance – General				17,412.34
530 Communications	21,056.70	21,056.69		42,113.39
580 Travel	3,158.19	2,666.33		14,323.53
<b>Total Other Purchased Services</b>	<b>\$24,214.89</b>	<b>\$23,723.02</b>		<b>\$73,849.26</b>
600 <u>Supplies</u>				
610 General Supplies	1,538.60	1,195.46		16,709.21
<b>Total Supplies</b>	<b>\$1,538.60</b>	<b>\$1,195.46</b>		<b>\$16,709.21</b>
800 <u>Other Objects</u>				
810 Dues and Fees	4,254.00	3,174.00		13,719.95
<b>Total Other Objects</b>	<b>\$4,254.00</b>	<b>\$3,174.00</b>		<b>\$13,719.95</b>
<b>Total 2300 Support Services – Administration</b>	<b>\$1,750,805.76</b>	<b>\$1,417,245.71</b>		<b>\$3,874,584.00</b>

LEA : 103028302     Shaler Area SD

Printed 12/4/2019 5:06:34 PM

General Fund (10)				
2310 Board Services	<u>Elementary</u>	<u>Secondary</u>	<u>Federal</u>	<u>Total</u>
500 <u>Other Purchased Services</u>				
520 Insurance – General				9,392.00
580 Travel				1,373.40
Total Other Purchased Services				\$10,765.40
600 <u>Supplies</u>				
610 General Supplies				1,525.15
Total Supplies				\$1,525.15
Total 2310 Board Services				\$12,290.55

LEA : 103028302     Shaler Area SD

Printed 12/4/2019 5:06:34 PM

General Fund (10)

2330 Tax Assessment and Collection Services	<u>Elementary</u>	<u>Secondary</u>	<u>Federal</u>	<u>Total</u>
100 <u>Personnel Services – Salaries</u>				
100 Personnel Services – Salaries				49,452.00
Total Personnel Services – Salaries				\$49,452.00
200 <u>Personnel Services – Employee Benefits</u>				
220 Social Security Contributions				3,783.00
Total Personnel Services – Employee Benefits				\$3,783.00
300 <u>Purchased Professional and Technical Services</u>				
330 Other Professional Services				77,110.67
Total Purchased Professional and Technical Services				\$77,110.67
500 <u>Other Purchased Services</u>				
520 Insurance – General				8,020.34
Total Other Purchased Services				\$8,020.34
600 <u>Supplies</u>				
610 General Supplies				2,870.51
Total Supplies				\$2,870.51
Total 2330 Tax Assessment and Collection Services				\$141,236.52

LEA : 103028302     Shaler Area SD

Printed 12/4/2019 5:06:34 PM

General Fund (10)

2350 Legal and Accounting Services	<u>Elementary</u>	<u>Secondary</u>	<u>Federal</u>	<u>Total</u>
300 <u>Purchased Professional and Technical Services</u>				
330 Other Professional Services				144,937.52
<b>Total Purchased Professional and Technical Services</b>				<b>\$144,937.52</b>
<b>Total 2350 Legal and Accounting Services</b>				<b>\$144,937.52</b>

LEA : 103028302     Shaler Area SD

Printed 12/4/2019 5:06:34 PM

<b>General Fund (10)</b>				
<b>2360 Office of the Superintendent / Executive Director Services</b>	<b><u>Elementary</u></b>	<b><u>Secondary</u></b>	<b><u>Federal</u></b>	<b><u>Total</u></b>
<b>100 <u>Personnel Services – Salaries</u></b>				
100 Personnel Services – Salaries				224,079.97
<b>Total Personnel Services – Salaries</b>				<b>\$224,079.97</b>
<b>200 <u>Personnel Services – Employee Benefits</u></b>				
210 Group Insurance – Contracted Provider				31,714.84
220 Social Security Contributions				15,439.74
230 PSERS Retirement Contributions				73,277.44
260 Workers' Compensation				2,240.86
280 Other Post-Employment Benefits (OPEB)				2,970.03
<b>Total Personnel Services – Employee Benefits</b>				<b>\$125,642.91</b>
<b>500 <u>Other Purchased Services</u></b>				
530 Communications	21,056.70	21,056.69		42,113.39
580 Travel				7,125.61
<b>Total Other Purchased Services</b>	<b>\$21,056.70</b>	<b>\$21,056.69</b>		<b>\$49,239.00</b>
<b>600 <u>Supplies</u></b>				
610 General Supplies				9,579.49
<b>Total Supplies</b>				<b>\$9,579.49</b>
<b>800 <u>Other Objects</u></b>				
810 Dues and Fees				5,793.00
<b>Total Other Objects</b>				<b>\$5,793.00</b>
<b>Total 2360 Office of the Superintendent / Executive Director Services</b>	<b>\$21,056.70</b>	<b>\$21,056.69</b>		<b>\$414,334.37</b>

LEA : 103028302     Shaler Area SD

Printed 12/4/2019 5:06:34 PM

General Fund (10)				
2370 Community Relations Services	<u>Elementary</u>	<u>Secondary</u>	<u>Federal</u>	<u>Total</u>
800 <u>Other Objects</u>				
810 Dues and Fees				498.95
Total Other Objects				\$498.95
Total 2370 Community Relations Services				\$498.95

LEA : 103028302     Shaler Area SD

Printed 12/4/2019 5:06:34 PM

General Fund (10)				
2380 Office of the Principal Services	<u>Elementary</u>	<u>Secondary</u>	<u>Federal</u>	<u>Total</u>
100 <u>Personnel Services – Salaries</u>				
100 Personnel Services – Salaries	1,027,591.01	840,153.48		1,867,744.49
<b>Total Personnel Services – Salaries</b>	<b>\$1,027,591.01</b>	<b>\$840,153.48</b>		<b>\$1,867,744.49</b>
200 <u>Personnel Services – Employee Benefits</u>				
210 Group Insurance – Contracted Provider	241,072.89	175,516.06		416,588.95
220 Social Security Contributions	77,095.51	64,204.81		141,300.32
230 PSERS Retirement Contributions	343,226.90	280,739.85		623,966.75
260 Workers' Compensation	10,280.42	8,583.05		18,863.47
<b>Total Personnel Services – Employee Benefits</b>	<b>\$671,675.72</b>	<b>\$529,043.77</b>		<b>\$1,200,719.49</b>
400 <u>Purchased Property Services</u>				
440 Rentals	21,531.54	19,955.98		41,487.52
<b>Total Purchased Property Services</b>	<b>\$21,531.54</b>	<b>\$19,955.98</b>		<b>\$41,487.52</b>
500 <u>Other Purchased Services</u>				
580 Travel	3,158.19	2,666.33		5,824.52
<b>Total Other Purchased Services</b>	<b>\$3,158.19</b>	<b>\$2,666.33</b>		<b>\$5,824.52</b>
600 <u>Supplies</u>				
610 General Supplies	1,538.60	1,195.46		2,734.06
<b>Total Supplies</b>	<b>\$1,538.60</b>	<b>\$1,195.46</b>		<b>\$2,734.06</b>
800 <u>Other Objects</u>				
810 Dues and Fees	4,254.00	3,174.00		7,428.00
<b>Total Other Objects</b>	<b>\$4,254.00</b>	<b>\$3,174.00</b>		<b>\$7,428.00</b>
<b>Total 2380 Office of the Principal Services</b>	<b>\$1,729,749.06</b>	<b>\$1,396,189.02</b>		<b>\$3,125,938.08</b>



LEA : 103028302     Shaler Area SD

Printed 12/4/2019 5:06:34 PM

General Fund (10)

2390 Other Administration Services	<u>Elementary</u>	<u>Secondary</u>	<u>Federal</u>	<u>Total</u>
200 <u>Personnel Services – Employee Benefits</u>				
210 Group Insurance – Contracted Provider				9,700.00
220 Social Security Contributions				742.05
260 Workers' Compensation				97.00
Total Personnel Services – Employee Benefits				\$10,539.05
300 <u>Purchased Professional and Technical Services</u>				
330 Other Professional Services				24,808.96
Total Purchased Professional and Technical Services				\$24,808.96
Total 2390 Other Administration Services				\$35,348.01

LEA : 103028302      Shaler Area SD

Printed 12/4/2019 5:06:34 PM

General Fund (10)				
2400 Support Services – Pupil Health	<u>Elementary</u>	<u>Secondary</u>	<u>Federal</u>	<u>Total</u>
100 <u>Personnel Services – Salaries</u>				
100 Personnel Services – Salaries				559,729.08
Total Personnel Services – Salaries				\$559,729.08
200 <u>Personnel Services – Employee Benefits</u>				
210 Group Insurance – Contracted Provider				127,084.68
220 Social Security Contributions				41,873.55
230 PSERS Retirement Contributions				182,855.14
260 Workers' Compensation				5,597.58
Total Personnel Services – Employee Benefits				\$357,410.95
300 <u>Purchased Professional and Technical Services</u>				
323 Professional Educational Services – Other Educational Agencies				115,838.14
330 Other Professional Services				21,450.12
Total Purchased Professional and Technical Services				\$137,288.26
400 <u>Purchased Property Services</u>				
430 Repairs and Maintenance Services				586.62
Total Purchased Property Services				\$586.62
500 <u>Other Purchased Services</u>				
580 Travel				35.97
Total Other Purchased Services				\$35.97
600 <u>Supplies</u>				
610 General Supplies				9,965.80
Total Supplies				\$9,965.80
Total 2400 Support Services – Pupil Health				\$1,065,016.68

LEA : 103028302     Shaler Area SD

Printed 12/4/2019 5:06:34 PM

General Fund (10)

2420 Medical Services

<u>Elementary</u>	<u>Secondary</u>	<u>Federal</u>	<u>Total</u>
-------------------	------------------	----------------	--------------

300 Purchased Professional and Technical Services

330 Other Professional Services			21,450.12
---------------------------------	--	--	-----------

<b>Total Purchased Professional and Technical Services</b>			<b>\$21,450.12</b>
--	--	--	--------------------

<b>Total 2420 Medical Services</b>			<b>\$21,450.12</b>
------------------------------------	--	--	--------------------

LEA : 103028302     Shaler Area SD

Printed 12/4/2019 5:06:34 PM

General Fund (10)				
2430 Dental Services	<u>Elementary</u>	<u>Secondary</u>	<u>Federal</u>	<u>Total</u>
600 <u>Supplies</u>				
610 General Supplies				834.62
Total Supplies				\$834.62
Total 2430 Dental Services				\$834.62

LEA : 103028302     Shaler Area SD

Printed 12/4/2019 5:06:34 PM

General Fund (10)

2440 Nursing Services

	<u>Elementary</u>	<u>Secondary</u>	<u>Federal</u>	<u>Total</u>
<b>100 <u>Personnel Services – Salaries</u></b>				
100 Personnel Services – Salaries				559,729.08
<b>Total Personnel Services – Salaries</b>				<b>\$559,729.08</b>
<b>200 <u>Personnel Services – Employee Benefits</u></b>				
210 Group Insurance – Contracted Provider				127,084.68
220 Social Security Contributions				41,873.55
230 PSERS Retirement Contributions				182,855.14
260 Workers' Compensation				5,597.58
<b>Total Personnel Services – Employee Benefits</b>				<b>\$357,410.95</b>
<b>300 <u>Purchased Professional and Technical Services</u></b>				
323 Professional Educational Services – Other Educational Agencies				115,838.14
<b>Total Purchased Professional and Technical Services</b>				<b>\$115,838.14</b>
<b>400 <u>Purchased Property Services</u></b>				
430 Repairs and Maintenance Services				586.62
<b>Total Purchased Property Services</b>				<b>\$586.62</b>
<b>500 <u>Other Purchased Services</u></b>				
580 Travel				35.97
<b>Total Other Purchased Services</b>				<b>\$35.97</b>
<b>600 <u>Supplies</u></b>				
610 General Supplies				9,131.18
<b>Total Supplies</b>				<b>\$9,131.18</b>
<b>Total 2440 Nursing Services</b>				<b>\$1,042,731.94</b>

LEA : 103028302     Shaler Area SD

Printed 12/4/2019 5:06:34 PM

<b>General Fund (10)</b>				
<b>2500 Support Services – Business</b>	<b><u>Elementary</u></b>	<b><u>Secondary</u></b>	<b><u>Federal</u></b>	<b><u>Total</u></b>
<b>100 <u>Personnel Services – Salaries</u></b>				
100 Personnel Services – Salaries				405,642.52
<b>Total Personnel Services – Salaries</b>				<b>\$405,642.52</b>
<b>200 <u>Personnel Services – Employee Benefits</u></b>				
210 Group Insurance – Contracted Provider				101,646.77
220 Social Security Contributions				30,536.52
230 PSERS Retirement Contributions				135,543.94
260 Workers' Compensation				4,056.39
<b>Total Personnel Services – Employee Benefits</b>				<b>\$271,783.62</b>
<b>300 <u>Purchased Professional and Technical Services</u></b>				
330 Other Professional Services				37,910.00
<b>Total Purchased Professional and Technical Services</b>				<b>\$37,910.00</b>
<b>400 <u>Purchased Property Services</u></b>				
440 Rentals				65,638.92
<b>Total Purchased Property Services</b>				<b>\$65,638.92</b>
<b>500 <u>Other Purchased Services</u></b>				
549 Other Advertising/Public Relations				5,029.10
580 Travel				689.74
<b>Total Other Purchased Services</b>				<b>\$5,718.84</b>
<b>600 <u>Supplies</u></b>				
610 General Supplies				40,505.20
650 Supplies & Fees – Technology Related				(668.65)
<b>Total Supplies</b>				<b>\$39,836.55</b>
<b>800 <u>Other Objects</u></b>				
810 Dues and Fees				1,245.00
<b>Total Other Objects</b>				<b>\$1,245.00</b>
<b>Total 2500 Support Services – Business</b>				<b>\$827,775.45</b>

LEA : 103028302     Shaler Area SD

Printed 12/4/2019 5:06:34 PM

General Fund (10)				
2510 Fiscal Services				
	<u>Elementary</u>	<u>Secondary</u>	<u>Federal</u>	<u>Total</u>
100 <u>Personnel Services – Salaries</u>				
100 Personnel Services – Salaries				344,605.92
Total Personnel Services – Salaries				\$344,605.92
200 <u>Personnel Services – Employee Benefits</u>				
210 Group Insurance – Contracted Provider				73,810.38
220 Social Security Contributions				26,005.66
230 PSERS Retirement Contributions				115,139.25
260 Workers' Compensation				3,445.91
Total Personnel Services – Employee Benefits				\$218,401.20
300 <u>Purchased Professional and Technical Services</u>				
330 Other Professional Services				37,910.00
Total Purchased Professional and Technical Services				\$37,910.00
400 <u>Purchased Property Services</u>				
440 Rentals				8,731.15
Total Purchased Property Services				\$8,731.15
500 <u>Other Purchased Services</u>				
549 Other Advertising/Public Relations				5,029.10
580 Travel				689.74
Total Other Purchased Services				\$5,718.84
600 <u>Supplies</u>				
610 General Supplies				5,826.58
650 Supplies & Fees – Technology Related				(668.65)
Total Supplies				\$5,157.93
800 <u>Other Objects</u>				
810 Dues and Fees				1,245.00
Total Other Objects				\$1,245.00
Total 2510 Fiscal Services				\$621,770.04

LEA : 103028302     Shaler Area SD

Printed 12/4/2019 5:06:34 PM

General Fund (10)				
2519 Other Fiscal Services	<u>Elementary</u>	<u>Secondary</u>	<u>Federal</u>	<u>Total</u>
100 <u>Personnel Services – Salaries</u>				
100 Personnel Services – Salaries				344,605.92
<b>Total Personnel Services – Salaries</b>				<b>\$344,605.92</b>
200 <u>Personnel Services – Employee Benefits</u>				
210 Group Insurance – Contracted Provider				73,810.38
220 Social Security Contributions				26,005.66
230 PSERS Retirement Contributions				115,139.25
260 Workers' Compensation				3,445.91
<b>Total Personnel Services – Employee Benefits</b>				<b>\$218,401.20</b>
300 <u>Purchased Professional and Technical Services</u>				
330 Other Professional Services				37,910.00
<b>Total Purchased Professional and Technical Services</b>				<b>\$37,910.00</b>
400 <u>Purchased Property Services</u>				
440 Rentals				8,731.15
<b>Total Purchased Property Services</b>				<b>\$8,731.15</b>
500 <u>Other Purchased Services</u>				
549 Other Advertising/Public Relations				5,029.10
580 Travel				689.74
<b>Total Other Purchased Services</b>				<b>\$5,718.84</b>
600 <u>Supplies</u>				
610 General Supplies				5,826.58
650 Supplies & Fees – Technology Related				(668.65)
<b>Total Supplies</b>				<b>\$5,157.93</b>
800 <u>Other Objects</u>				
810 Dues and Fees				1,245.00
<b>Total Other Objects</b>				<b>\$1,245.00</b>
<b>Total 2519 Other Fiscal Services</b>				<b>\$621,770.04</b>



LEA : 103028302     Shaler Area SD

Printed 12/4/2019 5:06:34 PM

General Fund (10)				
2520 Purchasing Services	<u>Elementary</u>	<u>Secondary</u>	<u>Federal</u>	<u>Total</u>
600 <u>Supplies</u>				
610 General Supplies				56.08
Total Supplies				\$56.08
Total 2520 Purchasing Services				\$56.08

LEA : 103028302      Shaler Area SD

Printed 12/4/2019 5:06:34 PM

General Fund (10)				
2540 Printing, Publishing and Duplicating Services	<u>Elementary</u>	<u>Secondary</u>	<u>Federal</u>	<u>Total</u>
100 <u>Personnel Services – Salaries</u>				
100 Personnel Services – Salaries				61,036.60
Total Personnel Services – Salaries				\$61,036.60
200 <u>Personnel Services – Employee Benefits</u>				
210 Group Insurance – Contracted Provider				27,836.39
220 Social Security Contributions				4,530.86
230 PSERS Retirement Contributions				20,404.69
260 Workers' Compensation				610.48
Total Personnel Services – Employee Benefits				\$53,382.42
400 <u>Purchased Property Services</u>				
440 Rentals				56,907.77
Total Purchased Property Services				\$56,907.77
600 <u>Supplies</u>				
610 General Supplies				34,622.54
Total Supplies				\$34,622.54
Total 2540 Printing, Publishing and Duplicating Services				\$205,949.33

LEA : 103028302     Shaler Area SD

Printed 12/4/2019 5:06:34 PM

General Fund (10)

2600 Operation and Maintenance of Plant Services	Elementary	Secondary	Federal	Total
<b>100 <u>Personnel Services – Salaries</u></b>				
100 Personnel Services – Salaries				2,954,559.34
<b>Total Personnel Services – Salaries</b>				<b>\$2,954,559.34</b>
<b>200 <u>Personnel Services – Employee Benefits</u></b>				
210 Group Insurance – Contracted Provider				678,679.51
220 Social Security Contributions				219,995.44
230 PSERS Retirement Contributions				964,307.66
250 Unemployment Compensation				7,285.66
260 Workers' Compensation				29,665.65
<b>Total Personnel Services – Employee Benefits</b>				<b>\$1,899,933.92</b>
<b>300 <u>Purchased Professional and Technical Services</u></b>				
350 Security / Safety Services				175,592.64
390 Other Purchased Professional and Technical Services				1,900.00
<b>Total Purchased Professional and Technical Services</b>				<b>\$177,492.64</b>
<b>400 <u>Purchased Property Services</u></b>				
410 Cleaning Services				46,377.40
420 Utility Services				131,283.77
430 Repairs and Maintenance Services				435,872.89
440 Rentals				7,113.95
<b>Total Purchased Property Services</b>				<b>\$620,648.01</b>
<b>500 <u>Other Purchased Services</u></b>				
521 Fire Insurance				166,996.00
522 Automotive Liability Insurance				8,136.00
530 Communications				81,491.40
580 Travel				3,369.97
<b>Total Other Purchased Services</b>				<b>\$259,993.37</b>
<b>600 <u>Supplies</u></b>				
610 General Supplies	151,522.94	160,697.79		312,220.73
620 Energy				1,204,031.02
<b>Total Supplies</b>	<b>\$151,522.94</b>	<b>\$160,697.79</b>		<b>\$1,516,251.75</b>
<b>700 <u>Property</u></b>				
752 Capital Equipment – Original and Additional				54,709.00
762 Capitalized Equipment - Replacement				53,761.91
<b>Total Property</b>				<b>\$108,470.91</b>
<b>800 <u>Other Objects</u></b>				
810 Dues and Fees				3,004.27
<b>Total Other Objects</b>				<b>\$3,004.27</b>
<b>Total 2600 Operation and Maintenance of Plant Services</b>	<b>\$151,522.94</b>	<b>\$160,697.79</b>		<b>\$7,540,354.21</b>

LEA : 103028302     Shaler Area SD

Printed 12/4/2019 5:06:34 PM

General Fund (10)				
2610 Supervision of Operation and Maintenance of Plant Services	<u>Elementary</u>	<u>Secondary</u>	<u>Federal</u>	<u>Total</u>
100 <u>Personnel Services – Salaries</u>				
100 Personnel Services – Salaries				178,787.77
<b>Total Personnel Services – Salaries</b>				<b>\$178,787.77</b>
200 <u>Personnel Services – Employee Benefits</u>				
210 Group Insurance – Contracted Provider				29,021.69
220 Social Security Contributions				13,501.94
230 PSERS Retirement Contributions				59,768.68
260 Workers' Compensation				1,787.97
<b>Total Personnel Services – Employee Benefits</b>				<b>\$104,080.28</b>
400 <u>Purchased Property Services</u>				
430 Repairs and Maintenance Services				8,908.45
440 Rentals				830.80
<b>Total Purchased Property Services</b>				<b>\$9,739.25</b>
500 <u>Other Purchased Services</u>				
580 Travel				3,360.55
<b>Total Other Purchased Services</b>				<b>\$3,360.55</b>
600 <u>Supplies</u>				
610 General Supplies	350.55	350.56		701.11
<b>Total Supplies</b>	<b>\$350.55</b>	<b>\$350.56</b>		<b>\$701.11</b>
800 <u>Other Objects</u>				
810 Dues and Fees				698.00
<b>Total Other Objects</b>				<b>\$698.00</b>
<b>Total 2610 Supervision of Operation and Maintenance of Plant Services</b>	<b>\$350.55</b>	<b>\$350.56</b>		<b>\$297,366.96</b>

LEA : 103028302     Shaler Area SD

Printed 12/4/2019 5:06:34 PM

General Fund (10)				
2611 Supervision of Operation and Maintenance of Plant Services – Head of Component	<u>Elementary</u>	<u>Secondary</u>	<u>Federal</u>	<u>Total</u>
100 <u>Personnel Services – Salaries</u>				
100 Personnel Services – Salaries				178,787.77
<b>Total Personnel Services – Salaries</b>				<b>\$178,787.77</b>
200 <u>Personnel Services – Employee Benefits</u>				
210 Group Insurance – Contracted Provider				29,021.69
220 Social Security Contributions				13,501.94
230 PSERS Retirement Contributions				59,768.68
260 Workers' Compensation				1,787.97
<b>Total Personnel Services – Employee Benefits</b>				<b>\$104,080.28</b>
400 <u>Purchased Property Services</u>				
430 Repairs and Maintenance Services				8,908.45
440 Rentals				830.80
<b>Total Purchased Property Services</b>				<b>\$9,739.25</b>
500 <u>Other Purchased Services</u>				
580 Travel				3,270.68
<b>Total Other Purchased Services</b>				<b>\$3,270.68</b>
600 <u>Supplies</u>				
610 General Supplies	350.55	350.56		701.11
<b>Total Supplies</b>	<b>\$350.55</b>	<b>\$350.56</b>		<b>\$701.11</b>
800 <u>Other Objects</u>				
810 Dues and Fees				698.00
<b>Total Other Objects</b>				<b>\$698.00</b>
<b>Total 2611 Supervision of Operation and Maintenance of Plant Services – Head of Component</b>	<b>\$350.55</b>	<b>\$350.56</b>		<b>\$297,277.09</b>

LEA : 103028302     Shaler Area SD

Printed 12/4/2019 5:06:34 PM

General Fund (10)

2619 Supervision of Operation and Maintenance of Plant Services – All Other Supervision	<u>Elementary</u>	<u>Secondary</u>	<u>Federal</u>	<u>Total</u>
500 <u>Other Purchased Services</u>				
580 Travel				89.87
Total Other Purchased Services				\$89.87
Total 2619 Supervision of Operation and Maintenance of Plant Services – All Other Supervision				\$89.87

LEA : 103028302     Shaler Area SD

Printed 12/4/2019 5:06:34 PM

General Fund (10)				
2620 Operation of Buildings Services	<u>Elementary</u>	<u>Secondary</u>	<u>Federal</u>	<u>Total</u>
100 <u>Personnel Services – Salaries</u>				
100 Personnel Services – Salaries				2,775,771.57
Total Personnel Services – Salaries				\$2,775,771.57
200 <u>Personnel Services – Employee Benefits</u>				
210 Group Insurance – Contracted Provider				649,657.82
220 Social Security Contributions				206,493.50
230 PSERS Retirement Contributions				904,538.98
250 Unemployment Compensation				7,285.66
260 Workers' Compensation				27,877.68
Total Personnel Services – Employee Benefits				\$1,795,853.64
300 <u>Purchased Professional and Technical Services</u>				
390 Other Purchased Professional and Technical Services				1,900.00
Total Purchased Professional and Technical Services				\$1,900.00
400 <u>Purchased Property Services</u>				
410 Cleaning Services				46,377.40
420 Utility Services				131,283.77
430 Repairs and Maintenance Services				353,077.02
440 Rentals				5,895.54
Total Purchased Property Services				\$536,633.73
500 <u>Other Purchased Services</u>				
521 Fire Insurance				166,996.00
530 Communications				81,491.40
580 Travel				9.42
Total Other Purchased Services				\$248,496.82
600 <u>Supplies</u>				
610 General Supplies	139,721.14	132,907.49		272,628.63
620 Energy				1,172,985.41
Total Supplies	\$139,721.14	\$132,907.49		\$1,445,614.04
700 <u>Property</u>				
752 Capital Equipment – Original and Additional				54,709.00
762 Capitalized Equipment - Replacement				9,384.00
Total Property				\$64,093.00
800 <u>Other Objects</u>				
810 Dues and Fees				2,306.27
Total Other Objects				\$2,306.27
Total 2620 Operation of Buildings Services	\$139,721.14	\$132,907.49		\$6,870,669.07

LEA : 103028302     Shaler Area SD

Printed 12/4/2019 5:06:34 PM

General Fund (10)

2630 Care and Upkeep of Grounds Services	<u>Elementary</u>	<u>Secondary</u>	<u>Federal</u>	<u>Total</u>
400 <u>Purchased Property Services</u>				
430 Repairs and Maintenance Services				11,306.10
Total Purchased Property Services				\$11,306.10
600 <u>Supplies</u>				
610 General Supplies	9,054.17	24,617.73		33,671.90
Total Supplies	\$9,054.17	\$24,617.73		\$33,671.90
700 <u>Property</u>				
762 Capitalized Equipment - Replacement				552.00
Total Property				\$552.00
Total 2630 Care and Upkeep of Grounds Services	\$9,054.17	\$24,617.73		\$45,530.00



LEA : 103028302     Shaler Area SD

Printed 12/4/2019 5:06:34 PM

General Fund (10)				
2650 Vehicle Operation and Maintenance Services (Other Than Student Transportation Vehicles)	<u>Elementary</u>	<u>Secondary</u>	<u>Federal</u>	<u>Total</u>
400 <u>Purchased Property Services</u>				
430 Repairs and Maintenance Services				45,328.28
440 Rentals				387.61
<b>Total Purchased Property Services</b>				<b>\$45,715.89</b>
500 <u>Other Purchased Services</u>				
522 Automotive Liability Insurance				8,136.00
<b>Total Other Purchased Services</b>				<b>\$8,136.00</b>
600 <u>Supplies</u>				
610 General Supplies	2,397.08	2,522.22		4,919.30
620 Energy				31,045.61
<b>Total Supplies</b>	<b>\$2,397.08</b>	<b>\$2,522.22</b>		<b>\$35,964.91</b>
700 <u>Property</u>				
762 Capitalized Equipment - Replacement				28,658.00
<b>Total Property</b>				<b>\$28,658.00</b>
<b>Total 2650 Vehicle Operation and Maintenance Services (Other Than Student Transportation Vehicles)</b>	<b>\$2,397.08</b>	<b>\$2,522.22</b>		<b>\$118,474.80</b>

LEA : 103028302     Shaler Area SD

Printed 12/4/2019 5:06:34 PM

General Fund (10)				
2660 Safety and Security Services	<u>Elementary</u>	<u>Secondary</u>	<u>Federal</u>	<u>Total</u>
300 <u>Purchased Professional and Technical Services</u>				
350 Security / Safety Services				175,592.64
Total Purchased Professional and Technical Services				\$175,592.64
400 <u>Purchased Property Services</u>				
430 Repairs and Maintenance Services				17,253.04
Total Purchased Property Services				\$17,253.04
600 <u>Supplies</u>				
610 General Supplies		299.79		299.79
Total Supplies		\$299.79		\$299.79
700 <u>Property</u>				
762 Capitalized Equipment - Replacement				15,167.91
Total Property				\$15,167.91
Total 2660 Safety and Security Services		\$299.79		\$208,313.38

LEA : 103028302     Shaler Area SD

Printed 12/4/2019 5:06:34 PM

General Fund (10)				
2700 Student Transportation Services	<u>Elementary</u>	<u>Secondary</u>	<u>Federal</u>	<u>Total</u>
100 <u>Personnel Services – Salaries</u>				
100 Personnel Services – Salaries				26,906.34
Total Personnel Services – Salaries				\$26,906.34
200 <u>Personnel Services – Employee Benefits</u>				
210 Group Insurance – Contracted Provider				6,714.94
220 Social Security Contributions				2,007.81
230 PSERS Retirement Contributions				8,994.86
260 Workers' Compensation				269.06
Total Personnel Services – Employee Benefits				\$17,986.67
300 <u>Purchased Professional and Technical Services</u>				
330 Other Professional Services				63,687.68
Total Purchased Professional and Technical Services				\$63,687.68
500 <u>Other Purchased Services</u>				
513 Contracted Carriers				4,619,713.85
516 Student Transportation Services From the IU				206.88
Total Other Purchased Services				\$4,619,920.73
600 <u>Supplies</u>				
610 General Supplies				134.75
620 Energy				22,673.76
650 Supplies & Fees – Technology Related				5,726.50
Total Supplies				\$28,535.01
Total 2700 Student Transportation Services				\$4,757,036.43

LEA : 103028302     Shaler Area SD

Printed 12/4/2019 5:06:34 PM

General Fund (10)

2710 Supervision of Student Transportation Services

Elementary                      Secondary                      Federal                      Total

100 <u>Personnel Services – Salaries</u>				
100 Personnel Services – Salaries				26,906.34
<b>Total Personnel Services – Salaries</b>				<b>\$26,906.34</b>
200 <u>Personnel Services – Employee Benefits</u>				
210 Group Insurance – Contracted Provider				6,714.94
220 Social Security Contributions				2,007.81
230 PSERS Retirement Contributions				8,994.86
260 Workers' Compensation				269.06
<b>Total Personnel Services – Employee Benefits</b>				<b>\$17,986.67</b>
600 <u>Supplies</u>				
610 General Supplies				134.75
650 Supplies & Fees – Technology Related				5,726.50
<b>Total Supplies</b>				<b>\$5,861.25</b>
<b>Total 2710 Supervision of Student Transportation Services</b>				<b>\$50,754.26</b>

LEA : 103028302     Shaler Area SD

Printed 12/4/2019 5:06:34 PM

General Fund (10)

2719 Supervision of Student Transportation Services – All Other Supervision	<u>Elementary</u>	<u>Secondary</u>	<u>Federal</u>	<u>Total</u>
100 <u>Personnel Services – Salaries</u>				
100 Personnel Services – Salaries				26,906.34
<b>Total Personnel Services – Salaries</b>				<b>\$26,906.34</b>
200 <u>Personnel Services – Employee Benefits</u>				
210 Group Insurance – Contracted Provider				6,714.94
220 Social Security Contributions				2,007.81
230 PSERS Retirement Contributions				8,994.86
260 Workers' Compensation				269.06
<b>Total Personnel Services – Employee Benefits</b>				<b>\$17,986.67</b>
600 <u>Supplies</u>				
610 General Supplies				134.75
650 Supplies & Fees – Technology Related				5,726.50
<b>Total Supplies</b>				<b>\$5,861.25</b>
<b>Total 2719 Supervision of Student Transportation Services – All Other Supervision</b>				<b>\$50,754.26</b>

LEA : 103028302     Shaler Area SD

Printed 12/4/2019 5:06:34 PM

General Fund (10)

2720 Vehicle Operation Services

<u>Elementary</u>	<u>Secondary</u>	<u>Federal</u>	<u>Total</u>
-------------------	------------------	----------------	--------------

500 Other Purchased Services

513 Contracted Carriers			2,438,607.04
-------------------------	--	--	--------------

516 Student Transportation Services From the IU			206.88
---	--	--	--------

<b>Total Other Purchased Services</b>			<b>\$2,438,813.92</b>
---------------------------------------	--	--	-----------------------

600 Supplies

620 Energy			22,673.76
------------	--	--	-----------

<b>Total Supplies</b>			<b>\$22,673.76</b>
-----------------------	--	--	--------------------

<b>Total 2720 Vehicle Operation Services</b>			<b>\$2,461,487.68</b>
--	--	--	-----------------------

LEA : 103028302     Shaler Area SD

Printed 12/4/2019 5:06:34 PM

General Fund (10)				
2750 Nonpublic Transportation	<u>Elementary</u>	<u>Secondary</u>	<u>Federal</u>	<u>Total</u>
500 <u>Other Purchased Services</u>				
513 Contracted Carriers				2,181,106.81
Total Other Purchased Services				\$2,181,106.81
Total 2750 Nonpublic Transportation				\$2,181,106.81

LEA : 103028302     Shaler Area SD

Printed 12/4/2019 5:06:34 PM

General Fund (10)

2790 Other Student Transportation Services	<u>Elementary</u>	<u>Secondary</u>	<u>Federal</u>	<u>Total</u>
300 <u>Purchased Professional and Technical Services</u>				
330 Other Professional Services				63,687.68
<b>Total Purchased Professional and Technical Services</b>				<b>\$63,687.68</b>
<b>Total 2790 Other Student Transportation Services</b>				<b>\$63,687.68</b>



LEA : 103028302      Shaler Area SD

Printed 12/4/2019 5:06:34 PM

<b>General Fund (10)</b>				
<b>2800 Support Services – Central</b>	<u><b>Elementary</b></u>	<u><b>Secondary</b></u>	<u><b>Federal</b></u>	<u><b>Total</b></u>
<b>100 <u>Personnel Services – Salaries</u></b>				
100 Personnel Services – Salaries				668,080.56
<b>Total Personnel Services – Salaries</b>				<b>\$668,080.56</b>
<b>200 <u>Personnel Services – Employee Benefits</u></b>				
210 Group Insurance – Contracted Provider				147,958.49
220 Social Security Contributions				50,087.88
230 PSERS Retirement Contributions				221,041.19
240 Tuition Reimbursement				22,882.00
260 Workers' Compensation				6,681.01
<b>Total Personnel Services – Employee Benefits</b>				<b>\$448,650.57</b>
<b>300 <u>Purchased Professional and Technical Services</u></b>				
330 Other Professional Services				29,971.22
340 Technical Services				10,610.00
360 Employee Training and Development Services			252.76	7,916.37
<b>Total Purchased Professional and Technical Services</b>			<b>\$252.76</b>	<b>\$48,497.59</b>
<b>500 <u>Other Purchased Services</u></b>				
549 Other Advertising/Public Relations				1,772.50
580 Travel			116.09	11,348.09
<b>Total Other Purchased Services</b>			<b>\$116.09</b>	<b>\$13,120.59</b>
<b>600 <u>Supplies</u></b>				
610 General Supplies				2,612.89
650 Supplies & Fees – Technology Related				305,274.47
<b>Total Supplies</b>				<b>\$307,887.36</b>
<b>700 <u>Property</u></b>				
752 Capital Equipment – Original and Additional				834.70
758 Capitalized Technology Software - Original				3,401.00
<b>Total Property</b>				<b>\$4,235.70</b>
<b>800 <u>Other Objects</u></b>				
810 Dues and Fees				368.96
<b>Total Other Objects</b>				<b>\$368.96</b>
<b>Total 2800 Support Services – Central</b>			<b>\$368.85</b>	<b>\$1,490,841.33</b>

LEA : 103028302      Shaler Area SD

Printed 12/4/2019 5:06:34 PM

General Fund (10)				
2810 Planning, Research, Development and Evaluation Services	<u>Elementary</u>	<u>Secondary</u>	<u>Federal</u>	<u>Total</u>
100 <u>Personnel Services – Salaries</u>				
100 Personnel Services – Salaries				407,447.23
Total Personnel Services – Salaries				\$407,447.23
200 <u>Personnel Services – Employee Benefits</u>				
210 Group Insurance – Contracted Provider				88,519.73
220 Social Security Contributions				30,519.18
230 PSERS Retirement Contributions				134,286.72
260 Workers' Compensation				4,074.49
Total Personnel Services – Employee Benefits				\$257,400.12
300 <u>Purchased Professional and Technical Services</u>				
340 Technical Services				10,610.00
Total Purchased Professional and Technical Services				\$10,610.00
500 <u>Other Purchased Services</u>				
580 Travel				7,255.61
Total Other Purchased Services				\$7,255.61
600 <u>Supplies</u>				
610 General Supplies				1,260.00
650 Supplies & Fees – Technology Related				305,274.47
Total Supplies				\$306,534.47
700 <u>Property</u>				
752 Capital Equipment – Original and Additional				834.70
Total Property				\$834.70
Total 2810 Planning, Research, Development and Evaluation Services				\$990,082.13

LEA : 103028302     Shaler Area SD

Printed 12/4/2019 5:06:34 PM

General Fund (10)				
2830 Staff Services				
	<u>Elementary</u>	<u>Secondary</u>	<u>Federal</u>	<u>Total</u>
100 <u>Personnel Services – Salaries</u>				
100 Personnel Services – Salaries				184,874.82
Total Personnel Services – Salaries				\$184,874.82
200 <u>Personnel Services – Employee Benefits</u>				
210 Group Insurance – Contracted Provider				43,954.87
220 Social Security Contributions				13,873.14
230 PSERS Retirement Contributions				61,428.23
240 Tuition Reimbursement				22,882.00
260 Workers' Compensation				1,848.82
Total Personnel Services – Employee Benefits				\$143,987.06
300 <u>Purchased Professional and Technical Services</u>				
330 Other Professional Services				29,971.22
360 Employee Training and Development Services			252.76	7,916.37
Total Purchased Professional and Technical Services			\$252.76	\$37,887.59
500 <u>Other Purchased Services</u>				
549 Other Advertising/Public Relations				1,772.50
580 Travel			116.09	4,092.48
Total Other Purchased Services			\$116.09	\$5,864.98
600 <u>Supplies</u>				
610 General Supplies				1,352.89
Total Supplies				\$1,352.89
800 <u>Other Objects</u>				
810 Dues and Fees				368.96
Total Other Objects				\$368.96
Total 2830 Staff Services			\$368.85	\$374,336.30

LEA : 103028302     Shaler Area SD

Printed 12/4/2019 5:06:34 PM

General Fund (10)

2831 Supervision of Staff Services	<u>Elementary</u>	<u>Secondary</u>	<u>Federal</u>	<u>Total</u>
100 <u>Personnel Services – Salaries</u>				
100 Personnel Services – Salaries				40,201.31
Total Personnel Services – Salaries				\$40,201.31
200 <u>Personnel Services – Employee Benefits</u>				
210 Group Insurance – Contracted Provider				976.36
220 Social Security Contributions				3,055.32
230 PSERS Retirement Contributions				13,164.97
260 Workers' Compensation				402.04
Total Personnel Services – Employee Benefits				\$17,598.69
Total 2831 Supervision of Staff Services				\$57,800.00

LEA : 103028302     Shaler Area SD

Printed 12/4/2019 5:06:34 PM

General Fund (10)				
2834 Staff Development Services – Non-Instructional, Certified Staff Only	<u>Elementary</u>	<u>Secondary</u>	<u>Federal</u>	<u>Total</u>
200 <u>Personnel Services – Employee Benefits</u>				
240 Tuition Reimbursement				17,652.00
Total Personnel Services – Employee Benefits				\$17,652.00
300 <u>Purchased Professional and Technical Services</u>				
360 Employee Training and Development Services			252.76	2,768.42
Total Purchased Professional and Technical Services			\$252.76	\$2,768.42
500 <u>Other Purchased Services</u>				
580 Travel			116.09	3,749.12
Total Other Purchased Services			\$116.09	\$3,749.12
Total 2834 Staff Development Services – Non-Instructional, Certified Staff Only			\$368.85	\$24,169.54

LEA : 103028302     Shaler Area SD

Printed 12/4/2019 5:06:34 PM

General Fund (10)

2836 Staff Development Services – Non-Instructional, Non-Certified Staff Only	<u>Elementary</u>	<u>Secondary</u>	<u>Federal</u>	<u>Total</u>
200 <u>Personnel Services – Employee Benefits</u>				
240 Tuition Reimbursement				5,230.00
Total Personnel Services – Employee Benefits				\$5,230.00
300 <u>Purchased Professional and Technical Services</u>				
360 Employee Training and Development Services				5,147.95
Total Purchased Professional and Technical Services				\$5,147.95
500 <u>Other Purchased Services</u>				
580 Travel				343.36
Total Other Purchased Services				\$343.36
Total 2836 Staff Development Services – Non-Instructional, Non-Certified Staff Only				\$10,721.31

LEA : 103028302     Shaler Area SD

Printed 12/4/2019 5:06:34 PM

General Fund (10)

2839 Other Staff Services	<u>Elementary</u>	<u>Secondary</u>	<u>Federal</u>	<u>Total</u>
100 <u>Personnel Services – Salaries</u>				
100 Personnel Services – Salaries				144,673.51
Total Personnel Services – Salaries				\$144,673.51
200 <u>Personnel Services – Employee Benefits</u>				
210 Group Insurance – Contracted Provider				42,978.51
220 Social Security Contributions				10,817.82
230 PSERS Retirement Contributions				48,263.26
260 Workers' Compensation				1,446.78
Total Personnel Services – Employee Benefits				\$103,506.37
300 <u>Purchased Professional and Technical Services</u>				
330 Other Professional Services				29,971.22
Total Purchased Professional and Technical Services				\$29,971.22
500 <u>Other Purchased Services</u>				
549 Other Advertising/Public Relations				1,772.50
Total Other Purchased Services				\$1,772.50
600 <u>Supplies</u>				
610 General Supplies				1,352.89
Total Supplies				\$1,352.89
800 <u>Other Objects</u>				
810 Dues and Fees				368.96
Total Other Objects				\$368.96
Total 2839 Other Staff Services				\$281,645.45

LEA : 103028302     Shaler Area SD

Printed 12/4/2019 5:06:34 PM

General Fund (10)

2840 Data Processing Services	<u>Elementary</u>	<u>Secondary</u>	<u>Federal</u>	<u>Total</u>
100 <u>Personnel Services – Salaries</u>				
100 Personnel Services – Salaries				54,008.30
Total Personnel Services – Salaries				\$54,008.30
200 <u>Personnel Services – Employee Benefits</u>				
210 Group Insurance – Contracted Provider				11,530.60
220 Social Security Contributions				4,063.04
230 PSERS Retirement Contributions				18,055.12
260 Workers' Compensation				540.20
Total Personnel Services – Employee Benefits				\$34,188.96
700 <u>Property</u>				
758 Capitalized Technology Software - Original				3,401.00
Total Property				\$3,401.00
Total 2840 Data Processing Services				\$91,598.26



LEA : 103028302     Shaler Area SD

Printed 12/4/2019 5:06:34 PM

General Fund (10)

2850 State and Federal Agency Liaison Services	<u>Elementary</u>	<u>Secondary</u>	<u>Federal</u>	<u>Total</u>
100 <u>Personnel Services – Salaries</u>				
100 Personnel Services – Salaries				21,750.21
Total Personnel Services – Salaries				\$21,750.21
200 <u>Personnel Services – Employee Benefits</u>				
210 Group Insurance – Contracted Provider				3,953.29
220 Social Security Contributions				1,632.52
230 PSERS Retirement Contributions				7,271.12
260 Workers' Compensation				217.50
Total Personnel Services – Employee Benefits				\$13,074.43
Total 2850 State and Federal Agency Liaison Services				\$34,824.64

LEA : 103028302     Shaler Area SD

Printed 12/4/2019 5:06:34 PM

General Fund (10)

2900 Other Support Services	<u>Elementary</u>	<u>Secondary</u>	<u>Federal</u>	<u>Total</u>
500 <u>Other Purchased Services</u>				
595 IU Payments By Withholding				63,015.74
Total Other Purchased Services				\$63,015.74
Total 2900 Other Support Services				\$63,015.74

LEA : 103028302     Shaler Area SD

Printed 12/4/2019 5:06:34 PM

General Fund (10)

2910 Support Services Not Listed Elsewhere In the 2000 Series

Elementary                      Secondary                      Federal                      Total

500 <u>Other Purchased Services</u>				
595 IU Payments By Withholding				63,015.74
Total Other Purchased Services				\$63,015.74
Total 2910 Support Services Not Listed Elsewhere In the 2000 Series				\$63,015.74

LEA : 103028302      Shaler Area SD

Printed 12/4/2019 5:06:41 PM

<b>General Fund (10)</b>	
<b>3000 Operation of Non-Instructional Services</b>	<b><u>Total</u></b>
<b>100 <u>Personnel Services – Salaries</u></b>	
100 Personnel Services – Salaries	1,046,428.26
<b>Total Personnel Services – Salaries</b>	<b>\$1,046,428.26</b>
<b>200 <u>Personnel Services – Employee Benefits</u></b>	
210 Group Insurance – Contracted Provider	56,378.73
220 Social Security Contributions	78,262.04
230 PSERS Retirement Contributions	303,645.34
260 Workers' Compensation	10,468.98
<b>Total Personnel Services – Employee Benefits</b>	<b>\$448,755.09</b>
<b>300 <u>Purchased Professional and Technical Services</u></b>	
329 Professional Educational Services – Other	700.00
330 Other Professional Services	41,850.00
350 Security / Safety Services	6,693.57
<b>Total Purchased Professional and Technical Services</b>	<b>\$49,243.57</b>
<b>400 <u>Purchased Property Services</u></b>	
410 Cleaning Services	4,475.95
430 Repairs and Maintenance Services	9,501.85
440 Rentals	829.82
<b>Total Purchased Property Services</b>	<b>\$14,807.62</b>
<b>500 <u>Other Purchased Services</u></b>	
510 Student Transportation Services	130,735.98
520 Insurance – General	24,619.00
580 Travel	24,836.26
591 Services Purchased Locally	12,222.52
599 Other Miscellaneous Purchased Services	43,020.57
<b>Total Other Purchased Services</b>	<b>\$235,434.33</b>
<b>600 <u>Supplies</u></b>	
610 General Supplies	104,779.28
630 Food	2,083.35
640 Books and Periodicals	5,223.97
<b>Total Supplies</b>	<b>\$112,086.60</b>
<b>700 <u>Property</u></b>	
752 Capital Equipment – Original and Additional	7,119.99
762 Capitalized Equipment - Replacement	5,263.86
<b>Total Property</b>	<b>\$12,383.85</b>
<b>800 <u>Other Objects</u></b>	
810 Dues and Fees	27,536.15
860 Grants To Municipal and Community Service Organizations	20,959.52
<b>Total Other Objects</b>	<b>\$48,495.67</b>
<b>Total 3000 Operation of Non-Instructional Services</b>	<b>\$1,967,634.99</b>

LEA : 103028302      Shaler Area SD

Printed 12/4/2019 5:06:41 PM

<b>General Fund (10)</b>				
<b>3200 Student Activities</b>	<u>Elementary</u>	<u>Secondary</u>	<u>Federal</u>	<u>Total</u>
<b>100 <u>Personnel Services – Salaries</u></b>				
100 Personnel Services – Salaries				986,294.11
<b>Total Personnel Services – Salaries</b>				<b>\$986,294.11</b>
<b>200 <u>Personnel Services – Employee Benefits</u></b>				
210 Group Insurance – Contracted Provider				56,378.73
220 Social Security Contributions				74,674.32
230 PSERS Retirement Contributions				292,449.27
260 Workers' Compensation				9,867.34
<b>Total Personnel Services – Employee Benefits</b>				<b>\$433,369.66</b>
<b>300 <u>Purchased Professional and Technical Services</u></b>				
329 Professional Educational Services – Other				700.00
330 Other Professional Services				41,850.00
350 Security / Safety Services				6,693.57
<b>Total Purchased Professional and Technical Services</b>				<b>\$49,243.57</b>
<b>400 <u>Purchased Property Services</u></b>				
410 Cleaning Services				4,475.95
430 Repairs and Maintenance Services				8,318.67
440 Rentals				829.82
<b>Total Purchased Property Services</b>				<b>\$13,624.44</b>
<b>500 <u>Other Purchased Services</u></b>				
510 Student Transportation Services				130,735.98
520 Insurance – General				24,619.00
580 Travel				24,312.26
591 Services Purchased Locally				12,222.52
599 Other Miscellaneous Purchased Services				43,020.57
<b>Total Other Purchased Services</b>				<b>\$234,910.33</b>
<b>600 <u>Supplies</u></b>				
610 General Supplies				99,328.13
<b>Total Supplies</b>				<b>\$99,328.13</b>
<b>700 <u>Property</u></b>				
752 Capital Equipment – Original and Additional				7,119.99
762 Capitalized Equipment - Replacement				5,263.86
<b>Total Property</b>				<b>\$12,383.85</b>
<b>800 <u>Other Objects</u></b>				
810 Dues and Fees				27,536.15
860 Grants To Municipal and Community Service Organizations				9,500.00
<b>Total Other Objects</b>				<b>\$37,036.15</b>
<b>Total 3200 Student Activities</b>				<b>\$1,866,190.24</b>

LEA : 103028302     Shaler Area SD

Printed 12/4/2019 5:06:41 PM

General Fund (10)				
3300 Community Services				
	<u>Elementary</u>	<u>Secondary</u>	<u>Federal</u>	<u>Total</u>
100 <u>Personnel Services – Salaries</u>				
100 Personnel Services – Salaries			81.00	60,134.15
Total Personnel Services – Salaries			\$81.00	\$60,134.15
200 <u>Personnel Services – Employee Benefits</u>				
220 Social Security Contributions			6.04	3,587.72
230 PSERS Retirement Contributions			27.07	11,196.07
260 Workers’ Compensation			0.81	601.64
Total Personnel Services – Employee Benefits			\$33.92	\$15,385.43
400 <u>Purchased Property Services</u>				
430 Repairs and Maintenance Services				1,183.18
Total Purchased Property Services				\$1,183.18
500 <u>Other Purchased Services</u>				
580 Travel			524.00	524.00
Total Other Purchased Services			\$524.00	\$524.00
600 <u>Supplies</u>				
610 General Supplies			531.55	5,451.15
630 Food				2,083.35
640 Books and Periodicals			5,223.97	5,223.97
Total Supplies			\$5,755.52	\$12,758.47
800 <u>Other Objects</u>				
860 Grants To Municipal and Community Service Organizations				11,459.52
Total Other Objects				\$11,459.52
Total 3300 Community Services			\$6,394.44	\$101,444.75

LEA : 103028302     Shaler Area SD

Printed 12/4/2019 5:06:48 PM

General Fund (10)

5000 Other Expenditures and Financing Uses		<u>Total</u>
800 <u>Other Objects</u>		
830 Interest		4,546.02
880 Refunds of Prior Years' Receipts		7,703.99
Total Other Objects		\$12,250.01
900 <u>Other Uses of Funds</u>		
910 Redemption of Principal		193,395.96
939 Other Fund Transfers		7,111,633.94
990 Miscellaneous Other Uses of Funds		13,192.96
Total Other Uses of Funds		\$7,318,222.86
Total 5000 Other Expenditures and Financing Uses		\$7,330,472.87

LEA : 103028302     Shaler Area SD

Printed 12/4/2019 5:06:48 PM

General Fund (10)

5100 Debt Service / Other Expenditures and Financing Uses	<u>Elementary</u>	<u>Secondary</u>	<u>Federal</u>	<u>Total</u>
800 <u>Other Objects</u>				
830 Interest				4,546.02
880 Refunds of Prior Years' Receipts				7,703.99
Total Other Objects				\$12,250.01
900 <u>Other Uses of Funds</u>				
910 Redemption of Principal				193,395.96
Total Other Uses of Funds				\$193,395.96
Total 5100 Debt Service / Other Expenditures and Financing Uses				\$205,645.97



LEA : 103028302     Shaler Area SD

Printed 12/4/2019 5:06:48 PM

General Fund (10)

5110 Debt Service	<u>Elementary</u>	<u>Secondary</u>	<u>Federal</u>	<u>Total</u>
800 <u>Other Objects</u>				
830 Interest				4,546.02
Total Other Objects				\$4,546.02
900 <u>Other Uses of Funds</u>				
910 Redemption of Principal				193,395.96
Total Other Uses of Funds				\$193,395.96
Total 5110 Debt Service				\$197,941.98

LEA : 103028302     Shaler Area SD

Printed 12/4/2019 5:06:48 PM

General Fund (10)

5130 Refund of Prior Year Revenues / Receipts	<u>Elementary</u>	<u>Secondary</u>	<u>Federal</u>	<u>Total</u>
800 <u>Other Objects</u>				
880 Refunds of Prior Years' Receipts				7,703.99
Total Other Objects				\$7,703.99
Total 5130 Refund of Prior Year Revenues / Receipts				\$7,703.99

LEA : 103028302     Shaler Area SD

Printed 12/4/2019 5:06:48 PM

General Fund (10)

5200 Interfund Transfers – Out	<u>Elementary</u>	<u>Secondary</u>	<u>Federal</u>	<u>Total</u>
900 <u>Other Uses of Funds</u>				
939 Other Fund Transfers				7,111,633.94
Total Other Uses of Funds				\$7,111,633.94
Total 5200 Interfund Transfers – Out				\$7,111,633.94

LEA : 103028302     Shaler Area SD

Printed 12/4/2019 5:06:48 PM

General Fund (10)

5240 Debt Service Fund Transfers	<u>Elementary</u>	<u>Secondary</u>	<u>Federal</u>	<u>Total</u>
900 <u>Other Uses of Funds</u>				
939 Other Fund Transfers				7,111,633.94
Total Other Uses of Funds				\$7,111,633.94
Total 5240 Debt Service Fund Transfers				\$7,111,633.94

LEA : 103028302     Shaler Area SD

Printed 12/4/2019 5:06:48 PM

General Fund (10)

5520 Special Items – Losses	<u>Elementary</u>	<u>Secondary</u>	<u>Federal</u>	<u>Total</u>
900 <u>Other Uses of Funds</u>				
990 Miscellaneous Other Uses of Funds				13,192.96
Total Other Uses of Funds				\$13,192.96
Total 5520 Special Items – Losses				\$13,192.96

LEA : 103028302     Shaler Area SD

Printed 12/4/2019 5:06:37 PM

Other Capital Projects Fund (39)

2000 Support Services

Total

300 Purchased Professional and Technical Services

330 Other Professional Services	4,322.00
---------------------------------	----------

<b>Total Purchased Professional and Technical Services</b>	<b>\$4,322.00</b>
--	-------------------

700 Property

752 Capital Equipment – Original and Additional	206,437.00
---	------------

<b>Total Property</b>	<b>\$206,437.00</b>
-----------------------	---------------------

800 Other Objects

810 Dues and Fees	107,285.00
-------------------	------------

<b>Total Other Objects</b>	<b>\$107,285.00</b>
----------------------------	---------------------

<b>Total 2000 Support Services</b>	<b>\$318,044.00</b>
------------------------------------	---------------------

LEA : 103028302     Shaler Area SD

Printed 12/4/2019 5:06:37 PM

Other Capital Projects Fund (39)

2300 Support Services – Administration

Elementary                      Secondary                      Federal                      Total

300 Purchased Professional and Technical Services

330 Other Professional Services 4,322.00

**Total Purchased Professional and Technical Services \$4,322.00**

800 Other Objects

810 Dues and Fees 107,285.00

**Total Other Objects \$107,285.00**

**Total 2300 Support Services – Administration \$111,607.00**

LEA : 103028302     Shaler Area SD

Printed 12/4/2019 5:06:37 PM

Other Capital Projects Fund (39)

2350 Legal and Accounting Services

300 Purchased Professional and Technical Services

	<u>Elementary</u>	<u>Secondary</u>	<u>Federal</u>	<u>Total</u>
330 Other Professional Services				4,322.00
Total Purchased Professional and Technical Services				\$4,322.00
Total 2350 Legal and Accounting Services				\$4,322.00



[illegible][illegible][illegible]

107,285.00

**\$107,285.00**

**\$107,285.00**

Page 130

LEA : 103028302     Shaler Area SD

Printed 12/4/2019 5:06:37 PM

Other Capital Projects Fund (39)

2520 Purchasing Services

<u>Elementary</u>	<u>Secondary</u>	<u>Federal</u>	<u>Total</u>
-------------------	------------------	----------------	--------------

700 Property

752 Capital Equipment – Original and Additional				206,437.00
---	--	--	--	------------

<b>Total Property</b>				<b>\$206,437.00</b>
-----------------------	--	--	--	---------------------

<b>Total 2520 Purchasing Services</b>				<b>\$206,437.00</b>
---------------------------------------	--	--	--	---------------------

LEA : 103028302     Shaler Area SD

Printed 12/4/2019 5:06:44 PM

Other Capital Projects Fund (39)

4000 Facilities Acquisition, Construction and Improvement Services

Total

300	<u>Purchased Professional and Technical Services</u>	
330	Other Professional Services	1,962,688.00
Total Purchased Professional and Technical Services		\$1,962,688.00
400	<u>Purchased Property Services</u>	
450	Construction Services	12,821.00
490	Other Purchased Property Services	1,715.00
Total Purchased Property Services		\$14,536.00
700	<u>Property</u>	
752	Capital Equipment – Original and Additional	826,703.00
Total Property		\$826,703.00
Total 4000 Facilities Acquisition, Construction and Improvement Services		\$2,803,927.00

LEA : 103028302     Shaler Area SD

Printed 12/4/2019 5:06:44 PM

Other Capital Projects Fund (39)

4500 Building Acquisition and Construction Services – Original and Additional	<u>Elementary</u>	<u>Secondary</u>	<u>Federal</u>	<u>Total</u>
700 <u>Property</u>				
752 Capital Equipment – Original and Additional				2,562.00
Total Property				\$2,562.00
Total 4500 Building Acquisition and Construction Services – Original and Additional				\$2,562.00

LEA : 103028302     Shaler Area SD

Printed 12/4/2019 5:06:44 PM

Other Capital Projects Fund (39)

4600 Existing Building Improvement Services	<u>Elementary</u>	<u>Secondary</u>	<u>Federal</u>	<u>Total</u>
300 <u>Purchased Professional and Technical Services</u>				
330 Other Professional Services				1,962,688.00
Total Purchased Professional and Technical Services				\$1,962,688.00
400 <u>Purchased Property Services</u>				
450 Construction Services				12,821.00
490 Other Purchased Property Services				1,715.00
Total Purchased Property Services				\$14,536.00
700 <u>Property</u>				
752 Capital Equipment – Original and Additional				824,141.00
Total Property				\$824,141.00
Total 4600 Existing Building Improvement Services				\$2,801,365.00

LEA : 103028302     Shaler Area SD

Printed 12/4/2019 5:06:38 PM

Debt Service Fund (40)

2000 Support Services

800 Other Objects

810 Dues and Fees	11,447.00
Total Other Objects	\$11,447.00
Total 2000 Support Services	\$11,447.00

LEA : 103028302     Shaler Area SD

Printed 12/4/2019 5:06:38 PM

Debt Service Fund (40)				
2300 Support Services – Administration	<u>Elementary</u>	<u>Secondary</u>	<u>Federal</u>	<u>Total</u>
800 <u>Other Objects</u>				
810 Dues and Fees				11,447.00
Total Other Objects				\$11,447.00
Total 2300 Support Services – Administration				\$11,447.00



LEA : 103028302     Shaler Area SD

Printed 12/4/2019 5:06:38 PM

Debt Service Fund (40)

2390 Other Administration Services

Elementary                      Secondary                      Federal                      Total

800 Other Objects

810 Dues and Fees 11,447.00

**Total Other Objects \$11,447.00**

**Total 2390 Other Administration Services \$11,447.00**

LEA : 103028302     Shaler Area SD

Printed 12/4/2019 5:06:49 PM

Debt Service Fund (40)

5000 Other Expenditures and Financing Uses

Total

800 <u>Other Objects</u>	
830 Interest	2,885,554.00
Total Other Objects	\$2,885,554.00
900 <u>Other Uses of Funds</u>	
910 Redemption of Principal	4,353,376.00
Total Other Uses of Funds	\$4,353,376.00
Total 5000 Other Expenditures and Financing Uses	\$7,238,930.00

LEA : 103028302     Shaler Area SD

Printed 12/4/2019 5:06:49 PM

Debt Service Fund (40)

5100 Debt Service / Other Expenditures and Financing Uses	<u>Elementary</u>	<u>Secondary</u>	<u>Federal</u>	<u>Total</u>
800 <u>Other Objects</u>				
830 Interest				2,885,554.00
Total Other Objects				\$2,885,554.00
900 <u>Other Uses of Funds</u>				
910 Redemption of Principal				4,353,376.00
Total Other Uses of Funds				\$4,353,376.00
Total 5100 Debt Service / Other Expenditures and Financing Uses				\$7,238,930.00

LEA : 103028302     Shaler Area SD

Printed 12/4/2019 5:06:49 PM

Debt Service Fund (40)

5110 Debt Service	<u>Elementary</u>	<u>Secondary</u>	<u>Federal</u>	<u>Total</u>
800 <u>Other Objects</u>				
830 Interest				2,885,554.00
Total Other Objects				\$2,885,554.00
900 <u>Other Uses of Funds</u>				
910 Redemption of Principal				4,353,376.00
Total Other Uses of Funds				\$4,353,376.00
Total 5110 Debt Service				\$7,238,930.00

LEA : 103028302 Shaler Area SD

Printed 12/4/2019 5:06:59 PM

	<u>General Fund(10)</u>	<u>Public Purpose Trust(27)</u>	<u>Other Compt Approved</u> <u>(28)</u>	<u>Athletic / Activity(29)</u>	<u>Capital Reserve (690.</u> <u>1850)(31)</u>
<b>1000 Instruction</b>					
1100 Regular Programs - Elementary / Secondary	33,920,694.63				
1200 Special Programs - Elementary / Secondary	13,248,689.48				
1300 Vocational Education	1,577,083.73				
1400 Other Instructional Programs - Elementary / Secondary	1,201,626.39				
1500 Nonpublic School Programs	10,764.50				
<b>Total Instruction</b>	<b>\$49,958,858.73</b>				
<b>2000 Support Services</b>					
2100 Support Services - Students	3,513,865.96				
2200 Support Services - Instructional Staff	1,797,982.86				
2300 Support Services - Administration	3,874,584.00				
2400 Support Services - Pupil Health	1,065,016.68				
2500 Support Services - Business	827,775.45				
2600 Operation and Maintenance of Plant Services	7,540,354.21				
2700 Student Transportation Services	4,757,036.43				
2800 Support Services - Central	1,490,841.33				
2900 Other Support Services	63,015.74				
<b>Total Support Services</b>	<b>\$24,930,472.66</b>				
<b>3000 Operation of Non-Instructional Services</b>					
3200 Student Activities	1,866,190.24				
3300 Community Services	101,444.75				
<b>Total Operation of Non-Instructional Services</b>	<b>\$1,967,634.99</b>				
<b>4000 Facilities Acquisition, Construction and Improvement Services</b>					
4500 Building Acquisition and Construction Services - Original and Additional					
4600 Existing Building Improvement Services					
<b>Total Facilities Acquisition, Construction and Improvement Services</b>					
<b>5000 Other Expenditures and Financing Uses</b>					
5100 Debt Service / Other Expenditures and Financing Uses	205,645.97				
5200 Interfund Transfers - Out	7,111,633.94				
5500 Special and Extraordinary Items	13,192.96				
<b>Total Other Expenditures and Financing Uses</b>	<b>\$7,330,472.87</b>				
<b>TOTAL ACTUAL EXPENDITURES &amp; OTHER FINANCING USES</b>	<b>\$84,187,439.25</b>				

LEA : 103028302     Shaler Area SD

Printed 12/4/2019 5:06:59 PM

	<u>Capital Reserve (1431)(32)</u>	<u>Other Capital Projects Fund(39)</u>	<u>Debt Service(40)</u>	<u>Permanent(90)</u>	<u>Total</u>
<b>1000 <u>Instruction</u></b>					
1100 Regular Programs - Elementary / Secondary					33,920,694.63
1200 Special Programs - Elementary / Secondary					13,248,689.48
1300 Vocational Education					1,577,083.73
1400 Other Instructional Programs - Elementary / Secondary					1,201,626.39
1500 Nonpublic School Programs					10,764.50
<b>Total Instruction</b>					<b>\$49,958,858.73</b>
<b>2000 <u>Support Services</u></b>					
2100 Support Services - Students					3,513,865.96
2200 Support Services - Instructional Staff					1,797,982.86
2300 Support Services - Administration		111,607.00	11,447.00		3,997,638.00
2400 Support Services - Pupil Health					1,065,016.68
2500 Support Services - Business		206,437.00			1,034,212.45
2600 Operation and Maintenance of Plant Services					7,540,354.21
2700 Student Transportation Services					4,757,036.43
2800 Support Services - Central					1,490,841.33
2900 Other Support Services					63,015.74
<b>Total Support Services</b>		<b>\$318,044.00</b>	<b>\$11,447.00</b>		<b>\$25,259,963.66</b>
<b>3000 <u>Operation of Non-Instructional Services</u></b>					
3200 Student Activities					1,866,190.24
3300 Community Services					101,444.75
<b>Total Operation of Non-Instructional Services</b>					<b>\$1,967,634.99</b>
<b>4000 <u>Facilities Acquisition, Construction and Improvement Services</u></b>					
4500 Building Acquisition and Construction Services - Original and Additional		2,562.00			2,562.00
4600 Existing Building Improvement Services		2,801,365.00			2,801,365.00
<b>Total Facilities Acquisition, Construction and Improvement Services</b>		<b>\$2,803,927.00</b>			<b>\$2,803,927.00</b>
<b>5000 <u>Other Expenditures and Financing Uses</u></b>					
5100 Debt Service / Other Expenditures and Financing Uses			7,238,930.00		7,444,575.97
5200 Interfund Transfers - Out					7,111,633.94
5500 Special and Extraordinary Items					13,192.96
<b>Total Other Expenditures and Financing Uses</b>			<b>\$7,238,930.00</b>		<b>\$14,569,402.87</b>
<b>TOTAL ACTUAL EXPENDITURES &amp; OTHER FINANCING USES</b>		<b>\$3,121,971.00</b>	<b>\$7,250,377.00</b>		<b>\$94,559,787.25</b>

LEA : 103028302     Shaler Area SD

Printed 12/4/2019 5:07:05 PM

PSERS Salary Data (Salary Data should relate to the General Fund only)

Amount	Description	Amount
	Total Salary Base for salaries subject to PSERS withholding	29,722,748.00
	Total Federally Funded salaries subject to PSERS withholding	204,548.00

Title I Expenditure Data

Amount	Description	Amount
	Expenditures Funded with Current Title I Funds	570,299.00
	Expenditures Funded with Carry over Title I Funds	
Total Title I Expenditure Data		\$570,299.00

Benefits for Staff Relative to Collective Bargaining Agreements

	OBJECT	COVERED	NOT COVERED	TOTAL
10 General Fund	No Self Insurance data to report			
	211 Medical Insurance	6,799,194.82	392,693.28	7,191,888.10
	212 Dental Insurance	409,414.30	25,859.28	435,273.58
	215 Eye Care Insurance	76,859.23	3,592.68	80,451.91
	216 Prescription Insurance			
	271 Self-Insurance Medical Benefits			
	272 Self-Insurance Dental Benefits			
	275 Self-Insurance Eye Care Benefits			
	276 Self-Insurance Prescription Benefits			
	FUND TOTAL	\$7,285,468.35	\$422,145.24	\$7,707,613.59
50 Enterprise Fund	No Self Insurance data to report			
	211 Medical Insurance			
	212 Dental Insurance			
	215 Eye Care Insurance			
	216 Prescription Insurance			
	271 Self-Insurance Medical Benefits			
	272 Self-Insurance Dental Benefits			
	275 Self-Insurance Eye Care Benefits			
	276 Self-Insurance Prescription Benefits			
	FUND TOTAL			
60 Internal Service Fund	No Self Insurance data to report			
	211 Medical Insurance			
	212 Dental Insurance			
	215 Eye Care Insurance			
	216 Prescription Insurance			
	271 Self-Insurance Medical Benefits			
	272 Self-Insurance Dental Benefits			
	275 Self-Insurance Eye Care Benefits			
	276 Self-Insurance Prescription Benefits			
	FUND TOTAL			
Total of All Funds		\$7,285,468.35	\$422,145.24	\$7,707,613.59



LEA : 103028302     Shaler Area SD

Printed 12/4/2019 5:07:10 PM

Function	Special Education (Prior Year)	Nonspecial Education (Prior Year)	Total (Prior Year)	Special Education (Current Year)	Nonspecial Education (Current Year)	Total (Current Year)
2120 Guidance Services	524,548.66	1,223,946.86	1,748,495.52	587,552.11	1,370,954.94	1,958,507.05
2140 Psychological Services	148,476.11	348,777.59	497,253.70	157,732.49	368,042.49	525,774.98
2150 Speech Pathology and Audiology Services						
2160 Social Work Services	163,318.33	381,076.10	544,394.43	169,317.58	395,074.34	564,391.92
2260 Instruction and Curriculum Development Services	86,657.26	202,200.27	288,857.53	124,717.92	291,008.48	415,726.40
2350 Legal and Accounting Services	53,910.21	125,790.48	179,700.69	43,481.26	101,456.26	144,937.52
2420 Medical Services	6,435.04	15,015.08	21,450.12	6,435.04	15,015.08	21,450.12
2440 Nursing Services	333,154.47	777,360.42	1,110,514.89	312,819.58	729,912.36	1,042,731.94
2700 Student Transportation Services	1,388,237.58	3,239,221.01	4,627,458.59	1,427,110.93	3,329,925.50	4,757,036.43
Total	\$2,704,737.66	\$6,313,387.81	\$9,018,125.47	\$2,829,166.91	\$6,601,389.45	\$9,430,556.36

LEA : 103028302     Shaler Area SD

Printed 12/4/2019 5:07:12 PM

(PRINCIPAL AMOUNTS ONLY)								
<u>GOVERNMENTAL FUNDS/ ACTIVITIES</u>	Short-Term Borrowing	General Obligation Bonds/Notes	Authority Building Obligations	Other Long-Term Debt	Other Post- Employment Benefits (OPEB)	Compensated Absences	Net Pension Liability	Total
1. Debt at Beginning of Fiscal Year		79,776,043.00		429,683.00	13,257,481.00	972,518.00	126,484,000.00	220,919,725.00
2. Additional Debt Incurred During Year		12,750,000.00			128,000.00	39,650.00		12,917,650.00
3. Retirements and Repayments		4,546,771.00		191,379.00	1,329,601.00	112,155.00	3,399,000.00	9,578,906.00
4. Debt at End of Fiscal Year		87,979,272.00		238,304.00	12,055,880.00	900,013.00	123,085,000.00	224,258,469.00
5. Accreted Interest at End Of Fiscal Year		20,552,077.00						20,552,077.00
6. Total Debt and Accreted Interest		108,531,349.00		238,304.00	12,055,880.00	900,013.00	123,085,000.00	244,810,546.00
7. Current Portion P&I - Due within 1 year		7,873,920.00		61,771.00		103,793.00		8,039,484.00
8. Interest Paid during current fiscal year		2,885,567.00		4,533.00				2,890,100.00

(PRINCIPAL AMOUNTS ONLY)							
<u>PROPRIETARY FUNDS</u>							
1. Debt at Beginning of Fiscal Year							
2. Additional Debt Incurred During Year							
3. Retirements and Repayments							
4. Debt at End of Fiscal Year							
5. Accreted Interest at End Of Fiscal Year							
6. Total Debt and Accreted Interest							
7. Current Portion P&I - Due within 1 year							
8. Interest Paid during current fiscal year							

LEA : 103028302     Shaler Area SD

Printed 12/4/2019 5:07:12 PM

Total Principal and Interest Payments Made by Your School - All Funds

Function	Fund		Principal (910)	Principal (920)	Interest (830)	Total (Principal +Interest)	Misc Other Uses (990)
5110	10	General Fund	193,395.96		4,546.02	197,941.98	
5110	20	Special Revenue Funds					
5110	30	Capital Projects Funds					
5110	40	Debt Service Fund	4,353,376.00		2,885,554.00	7,238,930.00	
5110	90	Permanent Fund					
5120	10	General Fund					
5120	20	Special Revenue Funds					
5120	30	Capital Projects Funds					
5120	40	Debt Service Fund					
Total Debt Payments - Governmental Funds			\$4,546,771.96		\$2,890,100.02	\$7,436,871.98	
Function	Fund		Principal (910)	Principal (920)	Interest (830)	Total (Principal +Interest)	
5110	50	Enterprise Fund					
5110	60	Internal Service Fund					
5120	50	Enterprise Fund					
5120	60	Internal Service Fund					
Total Debt Payments - Proprietary Funds							

LEA : 103028302     Shaler Area SD

Printed 12/4/2019 5:07:12 PM

**Debt Details**  
**Governmental Funds/ Activities**

Debt Category	Debt Issue Date (MM/YYYY)	Principal Amounts Only				Current Portion Due Within One Year (Principal and Interest)	Interest Paid During Fiscal Year
		Debt at Beginning of Fiscal Year	Additions	Reductions / Repayments	Debt at End of Fiscal Year		
General Obligation Bonds/Notes – CIB	05/2019		12,750,000.00		12,750,000.00	451,751.00	
General Obligation Bonds/Notes – CIB	05/2016	20,980,000.00		105,000.00	20,875,000.00	1,120,250.00	1,022,300.00
General Obligation Bonds/Notes – CIB	05/2016	14,035,000.00		5,000.00	14,030,000.00	722,812.00	717,912.00
General Obligation Bonds/Notes – CIB	05/2016	2,715,000.00		5,000.00	2,710,000.00	139,550.00	134,650.00
General Obligation Bonds/Notes – CIB	07/2016	1,760,407.00		126,771.00	1,633,636.00	190,144.00	63,064.00
General Obligation Bonds/Notes – CIB	05/2016	3,685,000.00		465,000.00	3,220,000.00	559,675.00	98,775.00
General Obligation Bonds/Notes – CIB	09/2015	9,965,000.00		5,000.00	9,960,000.00	295,699.00	290,775.00
General Obligation Bonds/Notes – CIB	08/2013	8,915,000.00		90,000.00	8,825,000.00	649,039.00	558,091.00
General Obligation Bonds/Notes – CAB	07/2006	11,213,324.00			11,213,324.00		
General Obligation Bonds/Notes – CAB	10/1997	6,507,312.00		3,745,000.00	2,762,312.00	3,745,000.00	
Extended Term Financing Agreements		429,683.00		191,379.00	238,304.00	61,771.00	4,533.00
Compensated Absences		972,518.00	39,650.00	112,155.00	900,013.00	103,793.00	
Other Post-Employment Benefits (OPEB)		13,257,481.00	128,000.00	1,329,601.00	12,055,880.00		
Net Pension Liability		126,484,000.00		3,399,000.00	123,085,000.00		
<b>Totals for Debt Entered:</b>		<b>\$220,919,725.00</b>	<b>\$12,917,650.00</b>	<b>\$9,578,906.00</b>	<b>\$224,258,469.00</b>	<b>\$8,039,484.00</b>	<b>\$2,890,100.00</b>

LEA : 103028302     Shaler Area SD

Printed 12/4/2019 5:07:12 PM

**Accreted Interest Detail**  
**Governmental Funds/ Activities**

Debt Category	Debt Issue Date (MM/YYYY)	Beginning Accreted Interest	Additions	Reductions	Ending Accreted Interest	Ending bond Principal	Ending Principal Plus Accreted Interest
General Obligation Bonds/Notes – CAB	07/2006	8,936,683.00	1,051,565.00		9,988,248.00	11,213,324.00	21,201,572.00
General Obligation Bonds/Notes – CAB	10/1997	9,841,792.00	722,037.00		10,563,829.00	2,762,312.00	13,326,141.00
<b>Totals for Debt Entered:</b>		<b>\$18,778,475.00</b>	<b>\$1,773,602.00</b>		<b>\$20,552,077.00</b>	<b>\$13,975,636.00</b>	<b>\$34,527,713.00</b>

LEA : 103028302     Shaler Area SD

Printed 12/4/2019 5:07:15 PM

**General Fund (10)**

Section 1: Tuition/Purchased Services as Reported within Expenditure Detail	Amount
Tuition Reported in General Fund Expenditures 1000-560	4,778,671.22
Purchased Services in General Fund Expenditures 1000-594 and 1000-597	14,442.37
<b>Section 1 Total</b>	<b>\$4,793,113.59</b>

Section 2: Tuition Paid to Institution Types During Fiscal Year	Tuition Paid For Nonspecial Education	Tuition Paid For Special Education	Total
1    1306 Institutions			
2    Institutionalized Children's Programs		14,442.37	14,442.37
3    Juveniles Incarcerated in Adult Facilities			
4    Residential Treatment Facilities			
5    Other Local Education Agencies	86,781.00	14,748.20	101,529.20
6    Brick and Mortar Charter Schools	105,477.64	293,690.24	399,167.88
7    Cyber Charter Schools	790,171.84	528,339.26	1,318,511.10
8    Career and Technology Centers	1,492,431.81		1,492,431.81
9    Approved Private Schools		1,025,271.02	1,025,271.02
10   PA Chartered Schools for the Deaf and Blind			
11   Private Residential Rehabilitative Institutions		280,989.50	280,989.50
12   Juvenile Detention Centers			
13   Special Program Jointures			
14   Other Tuition Not Included Elsewhere In This Section		160,770.71	160,770.71
<b>Section 2 Total</b>	<b>\$2,474,862.29</b>	<b>\$2,318,251.30</b>	<b>\$4,793,113.59</b>

LEA : 103028302     Shaler Area SD

Printed 12/4/2019 5:07:17 PM

Food Service / Cafeteria Operations Fund (51)

3000 Operation of Non-Instructional Services

Total

500 Other Purchased Services

570 Food Service Management	1,820,577.00
-----------------------------	--------------

<b>Total Other Purchased Services</b>	<b>\$1,820,577.00</b>
---------------------------------------	-----------------------

600 Supplies

610 General Supplies	109,485.00
----------------------	------------

<b>Total Supplies</b>	<b>\$109,485.00</b>
-----------------------	---------------------

700 Property

740 Depreciation	9,223.00
------------------	----------

<b>Total Property</b>	<b>\$9,223.00</b>
-----------------------	-------------------

<b>Total 3000 Operation of Non-Instructional Services</b>	<b>\$1,939,285.00</b>
---	-----------------------

LEA : 103028302     Shaler Area SD

Printed 12/4/2019 5:07:17 PM

Food Service / Cafeteria Operations Fund (51)

3100 Food Services	<u>Elementary</u>	<u>Secondary</u>	<u>Federal</u>	<u>Total</u>
500 <u>Other Purchased Services</u>				
570 Food Service Management				1,820,577.00
Total Other Purchased Services				\$1,820,577.00
600 <u>Supplies</u>				
610 General Supplies				109,485.00
Total Supplies				\$109,485.00
700 <u>Property</u>				
740 Depreciation				9,223.00
Total Property				\$9,223.00
Total 3100 Food Services				\$1,939,285.00



	<u>Food Service(51)</u>	<u>Child Care Operations(52)</u>	<u>Other Enterprise(58)</u>	<u>Internal Service(60)</u>	<u>Total</u>
<b>3000 <u>Operation of Non-Instructional Services</u></b>					
3100 Food Services	1,939,285.00				1,939,285.00
<b>Total Operation of Non-Instructional Services</b>	<b>\$1,939,285.00</b>				<b>\$1,939,285.00</b>
<b>TOTAL ACTUAL EXPENDITURES &amp; OTHER FINANCING USES</b>	<b>\$1,939,285.00</b>				<b>\$1,939,285.00</b>

LEA : 103028302 Shaler Area SD

Printed 12/4/2019 5:07:28 PM

Fund	School	School Number	Local Personnel	Local Nonpersonnel	State Personnel	State Nonpersonnel	Federal Personnel	Federal Nonpersonnel	Total	Explanation
10										
	Burchfield Primary Sch	4696	11,069.00	1,706.00	1,988.00	194.00	615.00	9.00	15,581.00	
	Marzolf Primary Sch	5101	11,078.00	1,614.00	1,864.00	194.00	1,192.00	11.00	15,953.00	
	Reserve Primary Sch	4843	12,360.00	1,801.00	2,899.00	225.00	758.00	23.00	18,066.00	
	Scott Primary Sch	458	11,318.00	1,828.00	2,026.00	208.00	216.00	9.00	15,605.00	
	Shaler Area El Sch	8001	11,159.00	1,585.00	1,605.00	182.00	215.00	22.00	14,768.00	
	Shaler Area HS	460	13,050.00	1,902.00	1,878.00	216.00	215.00	20.00	17,281.00	
	Shaler Area MS	8002	14,787.00	2,252.00	2,127.00	255.00	215.00	37.00	19,673.00	
Total			84,821.00	12,688.00	14,387.00	1,474.00	3,426.00	131.00	116,927.00	